

**GLD<sup>®</sup>**  
**Golden Star Bearing**







Automatic Grinding Line  
自动磨加工线





Automatic Assembling Line

自动装配线





# Introduce

## 公司简介

Cixi Golden Star Bearing Co.,Ltd. is an ISO 9001 certified company specialized in producing deep groove ball bearings, self-aligning ball bearings, and special bearings. With technical innovations and upgrade manufacture equipment, Our GLD brand products could cover a wide quality range from ZV1 to ZV4, which of those are used world wide in variety of industries, such as automotive, electric motors, household appliances, office appliances, electric tools and so on.

Besides standard ball bearings, we have the advantage of manufacturing special bearings. Through the effort of our high skilled special bearing research & design engineers, we have developed and produced over 2000 types of special bearings including plastic pulleys, idler pulleys, pressed radial & thrust bearings, conveyor wheels, cutting bearings, cutting wheels, bearing wheels, unground low carbon steel bearings, ball units, steel, plastic rollers for doors & vehicles and so on.

Now we are still developing new special bearings about 10 items monthly and we are willing to develop

new products together with you, so your new special bearing drawings and samples are fully welcomed. We can provide you our products with our own brand and with OEM services.

Following the operation concept of “investing on advanced technology, obtaining advanced talents and producing advanced products”, we will continuously enlarge the research and production, so as to meet the requirement of changing market and the perfect “GLD” series products continuously.

# Content

## Precision Bearing 目录

2	厂房设备 Workshop Equipment
8	应用范围 Scope of Application
9	材料 Material
9	设计与开发 Research & Development
10	精度 Accuracy
11	径向游隙 Radial Inner Clearance
12	防尘、密封 Shield and Seal
12	振动 Vibration
13	包装与标志 Package and Marking
13	检验与测试 Inspection and Test
14	润滑 Lubrication
16	常用润滑脂的明细表 Lubricants and Specifications
20	深沟球轴承 Deep Groove Ball Bearings (d: 10~25 mm)
21	深沟球轴承 Deep Groove Ball Bearings (d: 30~50 mm)
22	微型球轴承 Miniature Ball Bearings (d: 2~10 mm)
24	英制轴承 Inch Size Bearings
25	深沟球轴承（汽车）Deep Groove Ball Bearings for Automobile
26	深沟球轴承（摩托车）Deep Groove Ball Bearings for Motorcycle
28	深沟球轴承 Deep Groove Ball Bearings 8000/87000/88000Series
30	深沟球轴承 Deep Groove Ball Bearings WC8000/WC87000/WC88000Series
32	开式调心球轴承 Self-aligning Radial Ball Bearing
34	闭式调心球轴承 Self-aligning Ball Bearings, with 2RS Seals
35	内圈加长调心球轴承 Self-aligning Ball Bearings, with Large Inner Ring
36	非标轴承 Special Bearings
39	尼龙窗户滑轮 Nylon Window Pulley
40	塑料滑轮 Plastics Pulley
41	带座冲压轴承 Pressed Radial Bearing with Housing
43	导轮 Idler Pulley
44	冲压轮子 Conveyor Wheel
45	带轴径向轴承 Radial Bearing with Shaft
46	冲压推力轴承 Pressed Thrust Bearing
47	带法兰冲压轴承 Pressed Radial Bearing with Flange
48	支承轮 Bearing Wheel
49	冲压轴承 Pressed Bearings
50	非磨低碳钢轴承 Unground Low Carbon Steel Bearing
51	车削轴承 Cutting Radial Bearing
52	车削轮 Cutting Wheel
52	万向滚珠与塑料部件 Ball Units and Plastic Parts
53	径向冲压轴承 Pressed Radial Bearing
54	门和车辆用包塑轴承 Steel, Plastic Rollers For Doors & Vehicles

GLD®

应用范围

Scope of Application

**Automobile and motorcycle:** dynamo, Belt tension bearing, starting motor, gearbox and other transmission parts.

**Office equipment:** printers, electronic data processing equipment, Copy machines, currency counting machines.

**Electric equipment :** small generators, small motors, synchro motors, electric fans, powertools, vacuum cleaners, conveyors.

**Electronic devices :** video cameras, video cassette recorders, oscillographs, powermeters, radar equipment, plotting instruments.

**Optical instruments :** film projectors, slide projectors, lasers.

**Medical instruments :** dental drills, electrocardiogram recorders, test instruments.

**Machinery:** packing machines, punching machines, transport equipment, gearshifts, high-frequency spindles, washing machines.

**Post & Telecommunication equipment:** letter sorting machines, transmitters, postage printers, facsimile machines.

**Others :** reels of fish-poles, electronic music instruments, household appliances, amateur sport apparatus, small sized driving devices, textile machines, etc.

汽车、摩托车：发电机、涨紧轮、起动机、变速轴及其它传动部件。

办公用具：印刷器、绘图仪、电子数据处理设备、复印机、点钞机。

电器：小型发电机、小马达、同步电机、电风扇、电动工具、气动工具、真空吸尘器、传送器。

电子设备：电视摄影机、录音机、盒式磁带录相机、示波器、功率仪表、雷达设备、测绘仪。

光学设备：电影放映机、幻灯机、激光器。

医学器具：牙钻、心电图记录器、试验仪器。

机械制造：定量包装机、冲床、运输设备、变速器、高频主轴、包装机械、清洗机。

邮政电信设备：信件分检器、发报机、邮资盖印要、传真机。

其他：钓鱼杆线轴、电子音乐器具、家用设备、业作运动器具、小型传动装置、纺织机械等。

GLD®

材料

Material

The rings and steel balls of GLD bearings are made of vacuum degassed GCr15 bearing steel (equivalent to AISI52100 and 100Cr6); the cage is made of punched cold rolled steel (#08 or #10) or in reinforced plastic upon request. Shields are made of imported SPCC steel or stainless steel (1Cr18Ni9) upon request. Seals are made of nitrile rubber, or oil-proof refractory rubber, with steel bone frame (#08 or #10), or stainless steel (1Cr18Ni9) upon request. The chemical composition of bearing steel and stainless steel are shown in table hereunder.

“金星”轴承的套圈和钢球采用真空脱气轴承钢（GCr15 相当于 ANSIE52100）制造，保持架采用优质冷轧钢板（08# 或 10#）冲压制成，必要时可用增强工程塑料制造，防尘盖采用进口专用材料（SPCC）或不锈钢板（1Cr18Ni9）制成，密封圈采用经表面处理的优质冷轧钢板（08# 或 10#）骨架和丁腈橡胶热压制成，必要时可采用不锈钢（1Cr18Ni9）骨架和耐油耐高温的特殊橡胶制成。

轴承钢、不锈钢的化学成份见下表：

Steel No. 钢号	C%	Si%	Mn%	S%	P%	Cr%
GCr15	0.95-1.05	0.15-0.35	0.20-0.40	≤0.020	≤0.027	1.30-1.65
9Cr18	0.90-1.00	≤0.80	≤0.80	≤0.030	≤0.035	17.0-19.0

设计与开发

Research & Development

GLD has a special R & D center with high skilled engineers. The center has been approved by the Science and Technology Institute of Zhejiang Province. It works strictly according to QS9000/VDA6.1 procedures, making Control Plan, FMEA and ensuring Quality assurance. Permanent concern is to ensure a zero defect product. The center can also develop new products. It is a leading technological center in the domestic market and among the best abroad.

本公司设有专门的技术研究开发中心，并配备了强有力的开发人员，该中心已被浙江省科技厅确认组建为省级技术研究开发中心。中心严格按 QS9000/VDA6.1 所规定的原理和方法进行新产品的先期策划、失效模式和后果分析、制订控制计划和质量保证计划，以确保“高品质、优服务、零缺陷、再改进”的质量方针落到实处。中心每年开发十几个新产品，部分通过省级鉴定，并被确认为具有国内领先水平，能够替代进口产品。

GLD bearings are generally P6 class. Allowable tolerances are shown in tables here-after.

“金星”轴承主要为 P6 级。其公差见附表所示。

向心轴承公差 Allowable Tolerance of Radial Bearing

内圈 Inner Ring														
精度等级 Accuracy class	d mm		△ dmp		Vdp			Vdmp	Kia	Sia	Sd	△ Bs		VBs
					直径系列 Diameter series									
					9	0.1	2,3,4							
	From	To	上偏差 Upper deviation	下偏差 Lower deviation	max			max	max	max	max	上偏差 Upper deviation	下偏差 Lower deviation	max
P0	2.5	10	0	-8	10	8	6	6	10			0	-120	15
	10	18	0	-8	10	8	6	6	10			0	-120	20
	18	30	0	-10	13	10	8	8	13			0	-120	20
	30	50	0	-12	15	12	9	9	15			0	-120	20
	50	80	0	-15	19	19	11	11	20			0	-150	25
P6	2.5	10	0	-7	9	7	5	5	6			0	-120	15
	10	18	0	-7	9	7	5	5	7			0	-120	20
	18	30	0	-8	10	8	6	6	8			0	-120	20
	30	50	0	-10	13	10	8	8	10			0	-120	20
	50	80	0	-12	15	15	9	9	10			0	-150	25
P5	2.5	10	0	-5	5	4	4	3	4	7	7	0	-40	5
	10	18	0	-5	5	4	4	3	4	7	7	0	-80	5
	18	30	0	-6	6	5	5	3	4	8	8	0	-120	5
	30	50	0	-8	8	6	6	4	5	8	8	0	-120	5
	50	80	0	-9	9	7	7	5	5	8	8	0	-150	6

向心轴承公差 Allowable Tolerance of Radial Bearing

外圈 Outer Ring														μ m		
精度等级 Accuracy class	d mm		△ dmp		VDp				VDmp	Kea	Sea	SD	△ Cs	VCs		
					开型轴承 Open bearing		闭型轴承 Capped bearing									
					直径系列 Diameter series											
					9	0.1	2,3,4	2,3,4								
	From	To	上偏差 Upper deviation	下偏差 Lower deviation	max				max	max	max	max	max			
P0	6	18	0	-8	10	8	6	10	6	15			与同一轴承 内圈的△Bs 相同 Same with △ Bs of inner ring of the same bear- ing	与同一轴 承内圈的 VBs相同 Same with VBs of in- ner ring of the same bearing		
	18	30	0	-9	12	9	7	12	7	15						
	30	50	0	-11	14	11	8	16	8	20						
	50	80	0	-13	16	13	10	20	10	25						
	80	120	0	-15	19	19	11	26	11	35						
P6	6	18	0	-7	9	7	5	9	5	8						
	18	30	0	-8	10	8	6	10	6	9						
	30	50	0	-9	11	9	7	13	7	10						
	50	80	0	-11	14	11	8	16	8	13						
	80	120	0	-13	16	16	10	20	10	18						
P5	6	18	0	-5	5	4	4		3	5	8	8		5		
	18	30	0	-6	6	5	5		3	6	8	8		5		
	30	50	0	-7	7	5	5		4	7	8	8		5		
	50	80	0	-9	9	7	7		5	8	10	8		6		
	80	120	0	-10	10	8	8		5	10	11	9		8		

The accuracy of bearings is classified as P2, P3,

P4, P5, P6 and P0 according to Chinese Standards GB/

T307.1-94 and GB/T307-84, equivalent to ISO492 and

ANSI /AFBMA as shown in table here-after.

轴承精度按中国国家标准 GB/T307.1-94 分为

P<sub>2</sub>、P<sub>4</sub>、P<sub>5</sub>、P<sub>6</sub> 和 P<sub>0</sub> 级，这些精度等级与 GB307

— 84 及 ISO 等标准比较如下表：

标准 Standard	精度等级 Accuracy class				
GB307-84	B	C	D	E	G
GB/T307.1-94	P <sub>2</sub>	P <sub>4</sub>	P <sub>5</sub>	P <sub>6</sub>	P <sub>0</sub>
ISO	2	4	5	6	0
ANSI	ABEC9	ABEC7	ABEC5	ABEC3	ABEC1
SKF	P <sub>2</sub>	P <sub>4</sub>	P <sub>5</sub>	P <sub>6</sub>	P <sub>0</sub>

## 径向游隙 Radial Inter Clearance

The radial inner clearance of bearings is specified in 5

groups from C2 (smallest) to C5 (biggest) as per table here-

after.

Note: Special requirements for radial inner clearance or

axial inner clearance can be met upon request

轴承的径向游隙按照中国国家标准 GB/

T4604-93 规定为五组，如下表所示：

特殊的径向游隙或轴向游隙要求，可按订货要

求生产。

轴承内径 Bearing Bore(mm)		第2组 C <sub>2</sub> Group 2-C <sub>2</sub>		基本组 0 Standard Group 0		第3组 C <sub>3</sub> Group 3-C <sub>3</sub>		第4组 C <sub>4</sub> Group 4-C <sub>4</sub>		第5组 C <sub>5</sub> Group 5-C <sub>5</sub>	
超过 From	到 To	最小 min	最大 max	最小 min	最大 max	最小 min	最大 max	最小 min	最大 max	最小 min	最大 max
2.5	6	0	7	2	13	8	23	-	-	-	-
6	10	0	7	2	13	8	23	14	29	20	37
10	18	0	9	3	18	11	25	18	33	25	45
18	24	0	10	5	20	13	28	20	36	28	48
24	30	1	11	5	20	13	28	23	41	30	53
30	40	1	11	6	20	15	33	28	46	40	64



GLD bearings can be supplied in various types, such as open, with single or Double shields (Z or 2Z), and with seals (RS or 2RS) Double-shielded (ZZ) and double-sealed (2RS) bearings are supplied with grease. So, they can be used directly after being unpacked at temperature -40℃ ~ +150℃. Special grease volume and type can also be supplied. Please refer to Lubricants and specifications p.16.

轴承有开放式、单面或双面带防尘盖（Z、2Z）和带密封圈（RS、2RS）之分，双面带防尘盖或密封圈的轴承在出厂时已按要求填充了 润滑脂，这些轴承可直接启封使用。其工作温度为－40℃~200℃。当工作条件特殊时，客户应在订货时附注加脂量及油脂牌号或其它要求。

振动

Vibration

Vibration of bearings is represented by Z, Z1, Z2, Z3 and Z4. It is tested by SO910 instrument on acceleration basis. For special requirement of speed vibration control, the bearings are tested by BVT-1 instrument and divided into V1, V2, V3 and V4.

轴承的振动级别用 Z、Z<sub>1</sub>、Z<sub>2</sub>、Z<sub>3</sub>、Z<sub>4</sub> 来表示，采用 SO910 仪器来检测。当有特殊要求时可用 BVT－1 来检测，用 V<sub>1</sub>、V<sub>2</sub>、V<sub>3</sub>、V<sub>4</sub> 表示。客户订货应注明振动要求。

轴承内 径 Bearing bore d(mm)	振动 ( 加速度 )Vibration(Acceleration) 单位：dB															振动 ( 速度 )Vibration(Speed) 单位：μ m/s											
	直径系列 (0)					直径系列 (2)					直径系列 (3)					V <sub>1</sub>			V <sub>2</sub>			V <sub>3</sub>			V <sub>4</sub>		
	Diameter Series(0)					Diameter Series(2)					Diameter Series(3)																
	Z	Z <sub>1</sub>	Z <sub>2</sub>	Z <sub>3</sub>		Z	Z <sub>1</sub>	Z <sub>2</sub>	Z <sub>3</sub>	Z <sub>4</sub>	Z	Z <sub>1</sub>	Z <sub>2</sub>	Z <sub>3</sub>	Z <sub>4</sub>	低频 Low fre- quency	中频 Medi- umfre- quency	高频 High fre- quency	低频 Low fre- quency	中频 Medi- umfre- quency	高频 High fre- quency	低频 Low fre- quency	中频 Medi- umfre- quency	高频 High fre- quency	低频 Low fre- quency	中频 Medi- umfre- quency	高频 High fre- quency
5	37	36	34	30		38	37	34	32	-	39	37	35	33	-	74	48	40	58	36	30	35	21	18	32	11	11
6	37	36	34	30		38	37	34	32	-	39	37	35	33	-	74	48	40	58	36	30	35	21	18	32	11	11
7	39	38	35	31		40	38	36	34	-	-	-	-	-	-	92	66	54	72	48	40	44	28	24	38	12	12
8	39	38	35	31		40	38	36	34	-	-	-	-	-	-	92	66	54	72	48	40	44	28	24	38	12	12
9	41	40	36	32		42	40	37	35	-	-	-	-	-	-	92	66	54	72	48	40	44	28	24	38	12	12
10	43	42	38	33		44	42	39	35	30	46	44	40	37	32	120	80	70	90	60	50	55	35	30	45	14	15
12	44	43	39	34		45	43	39	35	30	47	45	40	37	32	120	80	70	90	60	50	55	35	30	45	14	15
15	45	44	40	35		46	44	41	36	31	48	46	42	38	33	150	110	85	110	78	60	65	46	35	52	18	18
17	46	44	40	35		47	45	41	36	31	49	47	42	38	33	150	110	85	110	78	60	65	46	35	52	25	25
20	47	45	41	36		48	46	42	38	33	50	48	43	39	34	180	125	100	130	100	75	80	60	45	60	30	32
25	48	46	42	38		49	47	43	40	36	51	49	44	41	37	180	125	100	130	100	75	80	60	45	60	30	32
28	49	47	43	39		50	48	44	41	37	52	50	45	42	38	180	125	100	130	100	75	80	60	45	60	35	40
30	49	47	43	39		50	48	44	41	37	52	50	45	42	38	200	150	130	150	120	100	90	75	60	70	35	40
32	50	48	44	40		51	49	45	42	38	53	51	46	43	39	200	150	130	150	120	100	90	75	60	70	35	40
35	51	49	45	41		52	50	46	43	39	54	52	47	44	40	200	150	130	150	120	100	90	75	60	70	42	45
40	53	51	46	42		54	52	47	44	40	56	54	49	45	41	240	180	160	180	150	130	110	90	80	82	50	50
45	55	53	48	45		56	54	49	46	43	58	56	51	47	44	240	180	160	180	150	130	110	90	80	82	60	60
50	57	54	50	47		58	55	51	48	45	60	57	53	49	46	280	200	200	210	160	160	125	100	100	95	70	70

GLD bearings can be delivered in plastic tubes placed in carton boxes, wrapped in anti-rust paper with no tubes directly in carton boxes, or in plastic bag packed in a single box. Packing type must be specified in the order. Required indications are marked on carton box, such as bearing type, quantity and weight.

轴承是用塑料筒或用防锈纸卷包后装入纸箱，也可单套装入塑料小袋后再装入小纸盒，订货时可规定包装型式。轴承每箱包装外面有明显的标志，表示轴承的数量、质量、日期、体积及轴承代号等，以便客户贮存及分类。

检验与测试

Inspection And Test

Inspection of GLD bearings is performed at each stage of the manufacturing Process, from raw material to final operation to guarantee the quality. In addition to basic and normally used control instruments, GLD also has following inspection and test equipment to control the production process and the finished products.

“金星”轴承从原材料采购至每道工序的生产，都经过仔细严格的检验，以确保产品的质量，除基本的常用检测仪器外，公司还使用以下检测仪器对原材料、生产过程和成品进行控制：

序号 No.	仪器型号 Model No.of Instrument	仪器名称 Name of Instrument	检验项目 Test Item
1	HV-4B	微机高速自动破硫分析仪 PC high-speed automatic carbon and sulfur analyser	原材料化学成分 Chemical composition of raw material
2	HC- II	高速数显自动分析仪 High-speed digital display automatic analyser	
3	4X <sub>1</sub>	金相显微镜 Metallurgical microscope	材料和金相组织分析 Analysis of material and metallurgical structure
4	Y9025	圆度仪 Roundness measuring equipment	沟道及外径圆度 Roundness of groove and outer diameter
5	R902	沟道曲率检查仪 Groove curvature inspecting instrument	沟道曲率及沟形 Groove curvature and groove shape
6	SRM-1	表面粗糙度检查仪 Surface roughness inspecting instrument	沟道及有关表面的粗糙度 Roughness of groove and surface
7	S0910	轴承振动检查仪（加速度） Bearing vibration inspecting instrument (Acceleration)	（加速度）振动及异响 (Acceleration) Vibration and abnormal sound
8	BVT-1	轴承振动检查仪（速度） Bearing vibration inspecting instrument(Speed)	（速度）振动及异响 (Speed) Vibration and abnormal sound

Generally, lubrication can be performed by oil or grease.

一般情况下，润滑方法分为油和脂润滑两种：

Oil

- (1) Recommended for extremely high operation speeds
- (2) Good for assembly where the bearing is located in the same housing as other oil lubricated components
- (3) Suitable for extremely high operating temperatures
- (4) Good when a central oil system is used for auxiliary machine parts
- (5) Good when bearing torque requirement is a critical parameter

油

- (1) 适用于超高速运转。
- (2) 油对于轴承和油润滑的元件安装在同一机座中的装置是良好的润滑方法。
- (3) 适用于超高工作温度。
- (4) 油对于使用集中供油系统作为辅助机械的场合是良好的润滑方法。
- (5) 油对于轴承力矩有要求的场合是良好的润滑方法。

Grease

- (1) Grease is recommended for bearings without an elaborate housing
- (2) Grease gives long service operation without renewal or inspection
- (3) Grease performs a more efficient exclusion of dirt
- (4) Sealed and shielded bearings are supplied life greased

脂

- (1) 脂很容易保持在轴承中而不用精心制作的附件。
- (2) 脂给予长时期的服务而不需要重新更换或检查。
- (3) 脂增加在附件中隔离污物的有效性。
- (4) 闭式密封轴承在制造厂即可填入润滑脂。

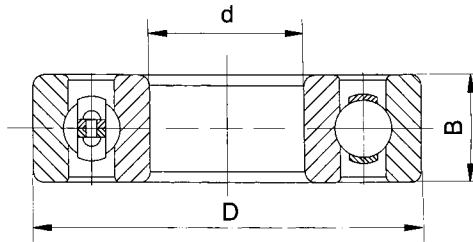


制造厂 Manufacturer	牌号 Brand	增稠剂 Viscosity	基油 Base oil	滴点 Drop point °C	稠度 Consistency	使用温度范围 Operating temperature range °C	选用原则 Selection criteria	NMB 代码 Code
Exxon	Beacon 325	锂基 (Lithium)	双酯 (Diester)	193	290	-60~+120	低温脂 low-temperature grease	LG20
	AC205	钠基 (Nathium)	矿物 (Mineral)			-25~+120	常温脂 normal temperature grease	
	Andok B	钠基 (Nathium)	矿物 (Mineral)	260	280	-40~+120	常温脂 normal temperature grease	
	Andok 260	钠基 (Nathium)	矿物 (Mineral)	200	250	-30~+150	常温脂 normal temperature grease	LG38 LG71
	Arapen RB300	锂基 (Lithium)	矿物 (Mineral)	200	250	-30~+100	常温脂 normal temperature grease	
	Polyrex EM	双聚尿 (Diurea)	矿物 (Mineral)	260	288	-40~+180	高温低噪音 high temperature low noise	
	Polyrex EP2	聚尿 (Urea)	矿物 (Mineral)	280	280	-40~+180	高温低噪音 high temperature low noise	
	UNIREX N2	锂皂复合基 (Lithium complex)	矿物 (Mineral)	250	280	-40~+180	高温低噪音 high temperature low noise	
	UNIREX N3	锂皂复合基 (Lithium complex)	矿物 (Mineral)	250	235	-40~+180	高温低噪音 high temperature low noise	
Kyodo Yushi	NS Hilube	锂基 (Lithium)	双酯 (Diester)	190	255	-40~+130	常温脂 normal temperature grease	LY72 LY121
	Multemp PS2	锂基 (Lithium)	双酯 (Diester)	189	280	-50~+110	低温脂 low-temperature grease	
	Multemp SRL	锂基 (Lithium)	酯 (Ester)	191	245	-40~+150	低噪音脂 low noise grease	
	Multemp SC-A	聚尿 (Urea)		≥ 260	280	0~+160	常温脂 normal temperature grease	
	Multemp ET150	聚尿 (Urea)	矿物 (Mineral)	≥ 260	280	-10~+160	常温脂 normal temperature grease	
	Oneluba	锂基 (Lithium)	双酯-矿物 (Diester Mineral)	198	270	-10~+110	常温脂 normal temperature grease	
	Adrex	锂基 (Lithium)	矿物 (Mineral)	198	300	-10~+120	常温脂 normal temperature grease	
	Parmax		矿物 (Mineral)	180	300	-10~+120	常温脂 normal temperature grease	
	Emalube 1130	聚尿 (Urea)	矿物 (Mineral)	≥ 260	300	-10~+130	常温脂 normal temperature grease	
	Unilube DL1	锂基 (Lithium)	矿物 (Mineral)	185	332	-10~+110	常温脂 normal temperature grease	
	Alumix HD1		矿物 (Mineral)	247	335	0~+120	常温脂 normal temperature grease	
	Multemp LTS	锂基 (Lithium)	酯 (Ester)	250	201	-60~+130	低温脂 low-temperature grease	
	Multemp SRH	锂基 (Lithium)	酯 (Ester)	250	201	-40~+150	低温脂 low-temperature grease	
	Multemp SB-M	双聚尿 (Diurea)	合成油 (Synthetic oil)	220	260	-40~+200	高温高速脂 high temperature high speed grease	
	Multemp SC-C	双聚尿 (Diurea)	合成油 (Synthetic oil)	280	300	-40~+200	高温水泵脂 high temperature pump-water grease	
	ET-K	双聚尿 (Diurea)	合成油 / 酯 (Synthetic oil/Ester)	260	300	-40~+200	高温高速交流电机脂 high temperature high speed alternators grease	
Klüber	Staburags NBU12	钡基 (Barium)	矿物 (Mineral)	220	270	-35~+150	常温脂 normal temperature grease	LY218
	Isoflex NBU15	钡基 (Barium)	双酯-矿物 (Diester Mineral)	220	280	-30~+130	常温脂 normal temperature grease	
	Asonic GLY32	锂基 (Lithium)	合成 (Synthetic)	190	265~295	-50~+140	低温脂 low-temperature grease	
	Asonic GHY72	Polyhamstoff	酯-矿物 (Ester Mineral)	250	250~280	-40~+180	高温低噪音 high temperature low noise	
	Isoflex Super LDS18	锂基 (Lithium)	双酯 (Diester)	190	280	-60~+130	低温脂 low-temperature grease	
	Isoflex Super TEL	锂基 (Lithium)	矿物 (Mineral)			-65~+70	低温脂 low-temperature grease	
	Isoflex LDS18 Special A	锂基 (Lithium)	双酯 (Diester)	190	280	-60~+130	低温脂 low-temperature grease	
	Isoflex PDB38 CX100	锂基 (Lithium)	酯 (Ester)			-70~+120	低温脂 low-temperature grease	
	Isoflex Topas NB52	钡基 (Barium)	合成碳氢 (Synthetic hydrocarbon)	240	280	-60~+170	高、低温 high-low temperature grease	
	Barrierta L55/2	聚四氟乙烯 (PTFE)	氟化油 (Fluorinated)		280	-35~+260	高、低温 high-low temperature grease	
	Barrierta EL	聚四氟乙烯 (PTFE)	氟化油 (Fluorinated)		280	-50~+180	高、低温 high-low temperature grease	
	Barrierta IMI/V	聚四氟乙烯 (PTFE)	氟化油 (Fluorinated)		280	-50~+220	高、低温 high-low temperature grease	
	Unisilikon TK44N2	Na-Komplex	硅油 (Silicone)			-60~+230	高、低温 high-low temperature grease	
	Isoflex NCA15	特种钙 (Spec. Ca)	酯矿物 (Ester Mineral oil)	180	265~295	-40~+130	高速脂 high speed grease	
	Asonic HQ72-102	聚尿 (Urea)	酯 (Ester)	240	250~280	-40~+180	高、低温低噪音脂 high-low temperature and low noise grease	
	Petamo GHY133	聚尿 (Urea)	合成矿物油 (Synthetic Mineral oil)	240	250~280	-25~+150	常温脂 normal temperature grease	
	Petamo GHY443	聚尿 (Urea)	酯 (Ester)	250	250~280	-20~+180	高温长寿命脂 high temperature longevity grease	
Dow Corning	Molykote 33M	锂基 (Lithium)	硅油 (Silicone)	210	260	-70~+180	高、低温 high-low temperature grease	LY81
	Molykote 44M	锂基 (Lithium)	硅油 (Silicone)	204	260	-40~+200	高温脂 high temperature grease	LY13
	Molykote 55M	锂基 (Lithium)	硅油 (Silicone)			-55~+165	低温脂 low-temperature grease	LY52

制造厂 Manufacturer	牌号 Brand	增稠剂 Viscosity	基油 Base oil	滴点 Drop point °C	稠度 Consistency	使用温度范围 Operating temperature range °C	选用原则 Selection criteria	NMB 代码 Code
Dow Corning	Molykote BR2 plus	锂基 (Lithium)	矿物 (Mineral)		280	-30~+150	高速脂 high speed grease	LY59
	Molykote FS1292	聚四氟乙烯 (PTFE)	硅 (Phlorosilicon)	≥ 232	310	-40~+200	高温脂 high temperature grease	
	Molykote FS3451	聚四氟乙烯 (PTFE)	硅 (Phlorosilicon)	≥ 260	285	-40~+230	抗化学溶剂脂 chemisorl and solnent-resisant grease	
	Molykote EM50L	锂基 (Lithium)	合成油 (Synthetic oil)	195	325	-40~+150	低噪音脂 low noise grease	
	Molykote BG20	锂基 (Lithium)	合成油 (Synthetic oil)	230	265~295	-50~+180	高温高速脂 high temperature high speed grease	
Shell	Alvania No.2	锂基 (Lithium)	矿物 (Mineral)	182	272	-25~+120	常温脂 normal temperature grease	LY83
	Alvania No.3	锂基 (Lithium)	矿物 (Mineral)	183	233	-20~+135	常温脂 normal temperature grease	LY84
	Alvania RA	锂基 (Lithium)	矿物 (Mineral)	183	252	-25~+120	常温脂 normal temperature grease	LY18
	Alvania EP2	锂基 (Lithium)	矿物 (Mineral)	185	276	-10~+100	常温脂 normal temperature grease	
	Sunlight 2	锂基 (Lithium)	矿物 (Mineral)	196	273	-20~+120	常温脂 normal temperature grease	
	Dolium R		矿物 (Mineral)	238	281	-20~+140	常温脂 normal temperature grease	LY119
	Aero shell No.5	Microgel	矿物 (Mineral)	≥ 260	282	-10~+130	常温脂 normal temperature grease	LG35
	Aero shell No.7	Microgel	矿物 (Mineral)	≥ 260	288	-70~+150	低温脂 low-temperature grease	LG49
	Aero shell No.15A	聚四氟乙烯 (PTFE)	双脂 (Diester)	≥ 260	280	-70~+260	高、低温 high-low temperature grease	
	Alvania RLQ2	锂基 (Lithium)	矿物 (Mineral)	195	266	-50~+150	低噪音、高速脂 low noise、high speed grease	
Mobil Oil	Mobilux2	锂基 (Lithium)	矿物 (Mineral)	190	280	-20~+120	常温脂 normal temperature grease	LY48
	Mobil 22	锂基 (Lithium)	双脂—矿物 (Diester Mineral)	192	274	-50~+140	低温脂 low-temperature grease	
	Mobil 28	膨润土 (Bentonite)	合成碳氢 (Synthetic hydrocarbon)	≥ 260	280	-60~+180	高、低温 high-low temperature grease	
	Mobilplex 47		矿物 (Mineral)	≥ 260	280	-20~+120	常温脂 normal temperature grease	
	Mobilith SHC100	锂基 (Lithium)	合成油 (Synthetic oil)	250	265~295	-40~+170	高速脂 high speed grease	
	Mobilith SHC220	锂基 (Lithium)	合成油 (Synthetic oil)	250	265~295	-40~+170	多用途脂 multiple use grease	
	Mobilitemp SHC22	粘土 (glue-earth)	合成油 (Synthetic oil)	250	265~295	-50~+180	高速、高温脂 high speed、high temperature grease	
	Mobilitemp SHC100	粘土 (glue-earth)	合成油 (Synthetic oil)	250	265~295	-50~+200	高速、高温脂 high speed、high temperature grease	
Du Pont	Krytox 204AC	聚四氟乙烯 (PTFE)	氟化油 (Fluorinated)		282	-35~+280	高温脂 high temperature grease	LY101
	Krytox 283AC	聚四氟乙烯 (PTFE)	氟化油 (Fluorinated)		229	-35~+280	高温脂 high temperature grease	
	Krytox 143AC	聚四氟乙烯 (PTFE)	氟化油 (Fluorinated)			-35~+280	高温脂 high temperature grease	
	Krytox GPL205	聚四氟乙烯 (PTFE)	氟化油 (Fluorinated)			-36~+204	高温脂 high temperature grease	
	Krytox GPL223	聚四氟乙烯 (PTFE)	氟化油 (Fluorinated)			-36~+204	高温、发电机、风扇离合器轴承脂	
	Krytox GPL224	聚四氟乙烯 (PTFE)	氟化油 (Fluorinated)			-51~+179	high temperature、alternator fan clutch bearing grease	
	Krytox GPL225	聚四氟乙烯 (PTFE)	氟化油 (Fluorinated)			-60~+154	气泵轴承脂 high temperature grease	
	Krytox GPL226	聚四氟乙烯 (PTFE)	氟化油 (Fluorinated)			-36~+260	CV 万向节 CV joint	
Toray Silicone	SH44M	锂基 (Lithium)	硅 (Phlorosilicon)	210	260	-40~+180	高温脂 high temperature grease	LY115
	SH33L	锂基 (Lithium)	硅 (Phlorosilicon)	210	300	-70~+140	低温脂 low-temperature grease	
	SH41	锂基 (Lithium)	硅 (Phlorosilicon)		280	-10~+200	高温脂 high temperature grease	
Caltex	Chevron SRI-2	聚尿 (Urea)	矿物 (Mineral)		293	-30~+175	高温脂 high temperature grease	LY75
General Electric	Anderol L-793A	锂基 (Lithium)	双脂 (Diester)			-60~+150	低温脂 low-temperature grease	LY15
	Versilube G-300	锂基 (Lithium)	硅油 (Silicone)			-70~+230	高、低温 high-low temperature grease	
	Versilube F-50		硅油 (Silicone)			-70~+230	高、低温 high-low temperature grease	
Lubcon	Turmogrease N2	聚尿 (Polyurea)	合成油 / 酯 (PAO/Ester)	≥ 250	280	-40~+160	通用轴承 currency bearing	LY5
	Lubteksonic BQg	锂基 (Lithium)	矿物 (Mineral)	250	280	-35~+150	低噪音 low noise	
	Turmogrease SHL 182	锂基 (Lithium)	合成油 / 酯 (PAO/Ester)	250	280	-70~+130	低温高速脂 low temperature high speed grease	
	Turmogrease SHL 252	特种锂基 (Lithium)	合成油 / 酯 (PAO/Ester)	220	280	-40~+120	高速脂 high speed grease	
	Turmoplex TML15	锂基 (Lithium)	酯 (Ester)	290	280	-35~+160(180)	高温高速脂 high temperature high speed grease	
	Turmogrease CX112K	锂基 (Lithium)	矿油 / 合成油 (Mineral oil/Synthetic)	190	265~295	-35~+140(160)	低噪音 low noise	
	Turmogrease NBI 300	聚尿 (Polyurea)	合成油脂 (PAO/Ester)	250	280	-40~+180	高温高负荷脂 high temperature high load grease	



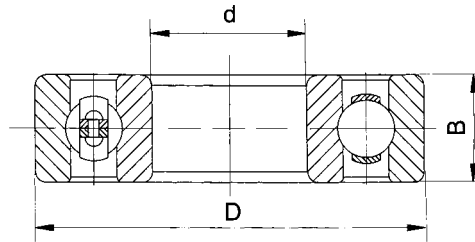
GLD® 深沟球轴承 Deep Groove Ball Bearings (d 10-25mm)



基本尺寸 Basic Dimensions			基本额定载荷 Basic Load Rating		极限转速 Limit Rotational Speed		质量 Mass	轴承代号 Bearing No.
d	D	B	Cr	Cor	脂润滑 Grease Lubri- cation	油润滑 Oil Lubrication		
mm			kN		r/min		kg	-
10	19	5	1.40	0.75	26000	34000	0.005	61800
	22	6	3.30	1.40	25000	32000	0.011	61900
	26	8	4.58	1.98	20000	28000	0.019	6000
	30	9	5.10	2.38	19000	26000	0.032	6200
	35	11	7.65	3.48	18000	24000	0.053	6300
12	21	5	1.40	0.90	22000	30000	0.007	61801
	24	6	3.38	1.48	20000	28000	0.013	61901
	28	7	5.08	2.38	19000	26000	0.019	16001
	28	8	5.10	2.38	19000	26000	0.022	6001
	32	10	6.82	3.05	18000	24000	0.035	6201
15	37	12	9.72	5.08	17000	22000	0.051	6301
	24	5	1.92	1.18	20000	28000	0.008	61802
	28	7	4.00	2.02	19000	26000	0.018	61902
	32	8	5.60	2.55	18000	24000	0.025	16002
	32	9	5.58	2.85	18000	24000	0.031	6002
17	35	11	7.65	3.72	17000	22000	0.045	6202
	42	13	11.5	5.42	16000	20000	0.080	6302
	26	5	2.18	1.28	19000	26000	0.008	61803
	30	7	4.30	2.32	18000	24000	0.020	61903
	35	8	6.82	3.38	17000	22000	0.027	16003
20	35	10	6.00	3.25	17000	22000	0.040	6003
	40	12	9.58	4.78	16000	20000	0.064	6203
	47	14	13.5	6.58	15000	19000	0.109	6303
	62	17	22.5	10.8	11000	15000	0.268	6403
	32	7	3.45	2.25	17000	22000	0.020	61804
25	37	9	6.55	3.60	17000	22000	0.040	61904
	42	8	7.90	4.45	15000	19000	0.050	16004
	42	12	9.38	5.02	15000	19000	0.068	6004
	47	14	12.8	6.65	14000	18000	0.103	6204
	52	15	15.8	7.88	13000	17000	0.142	6304
25	72	19	31.0	15.2	9500	13000	0.400	6404
	37	7	3.70	2.65	15000	19000	0.022	61805
	42	9	7.36	4.55	14000	18000	0.050	61905
	47	8	8.42	5.15	13000	17000	0.060	16005
	47	12	10.0	5.85	13000	17000	0.078	6005
25	52	15	14.0	7.88	12000	16000	0.127	6205
	62	17	22.2	11.5	10000	14000	0.219	6305
	80	21	38.2	19.2	8500	11000	0.529	6405

注：上述产品包括其变形系列，如 Z、2Z、RS、2RS 等  
Note: Above-mentioned products include its modification series, such as Z, 2Z, RS and 2RS, etc.

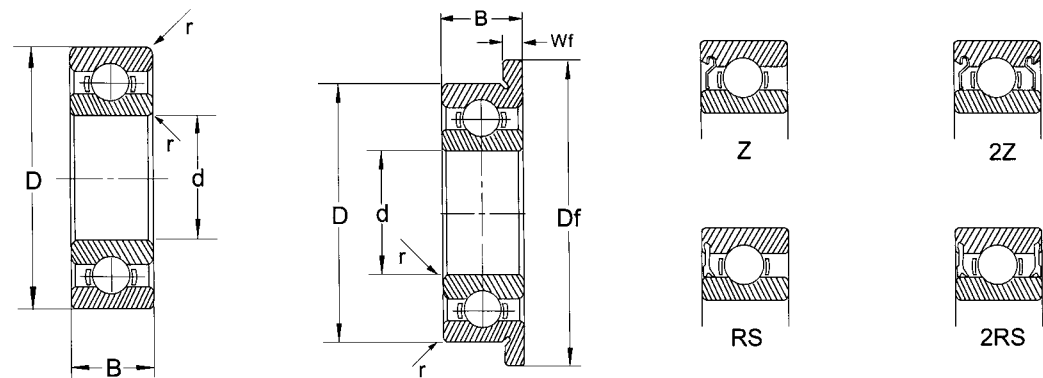
GLD® 深沟球轴承 Deep Groove Ball Bearings (d 30-50mm)



基本尺寸 Basic Dimensions			基本额定载荷 Basic Load Rating		极限转速 Limit Rotational Speed		质量 Mass	轴承代号 Bearing No.
d	D	B	Cr	Cor	脂润滑 Grease Lubri- cation	油润滑 Oil Lubrication		
mm			kN		r/min		kg	-
30	42	7	4.00	3.15	12000	16000	0.026	61806
	47	9	7.55	5.08	12000	16000	0.060	61906
	55	9	11.2	6.25	10000	14000	0.085	16006
	55	13	13.2	8.30	10000	14000	0.110	6006
	62	16	19.5	11.5	9500	3000	0.200	6206
	72	19	27.0	15.2	9000	12000	0.349	6306
	90	23	47.5	24.5	8000	10000	0.710	6406
35	47	7	4.12	3.45	10000	14000	0.030	61807
	55	10	9.55	6.85	9500	13000	0.086	61907
	62	9	11.5	8.80	9000	12000	0.100	16007
	62	14	16.2	10.5	9000	12000	0.148	6007
	72	17	25.5	15.2	8500	11000	0.288	6207
40	80	21	33.2	19.2	8000	10000	0.455	6307
	100	25	56.8	29.5	6700	8500	0.926	6407
	52	7	4.40	3.25	9500	13000	0.034	61808
	62	12	12.0	8.98	9000	12000	0.110	61908
	68	9	12.5	10.2	8500	11000	0.130	16008
45	68	15	17.0	11.8	8500	11000	0.185	6008
	80	18	29.5	18.0	8000	10000	0.368	6208
	90	23	40.8	24.0	7000	9000	0.639	6308
	110	27	65.5	37.5	6300	8000	1.221	6408
	58	7	4.65	4.32	8500	11000	0.040	61809
50	68	12	12.8	9.72	8500	11000	0.140	61909
	75	10	21.0	10.2	8000	10000	0.170	16009
	75	16	21.0	14.8	8000	10000	0.230	6009
	85	19	31.5	20.5	7000	9000	0.416	6209
	100	25	52.8	31.8	6300	8000	0.837	6309
50	120	29	77.5	45.5	5600	7000	1.520	6409
	65	7	5.10	4.68	8000	10000	0.057	61810
	72	12	12.8	11.2	8000	10000	0.140	61910
	80	10	16.2	13.2	7000	9000	0.180	16010
	80	16	22.0	16.2	7000	9000	0.258	6010
50	90	20	35.0	23.2	6700	8500	0.463	6210
	110	27	61.8	38.0	6000	7500	1.082	6310

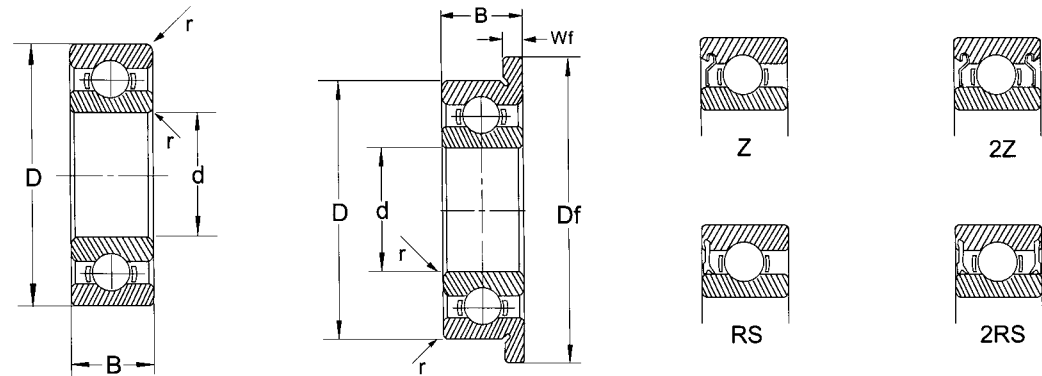
注：上述产品包括其变形系列，如 Z、2Z、RS、2RS 等  
Note: Above-mentioned products include its modification series, such as Z, 2Z, RS and 2RS, etc.

**GLD® 微型球轴承 Miniature Ball Bearing (d 2-10mm)**



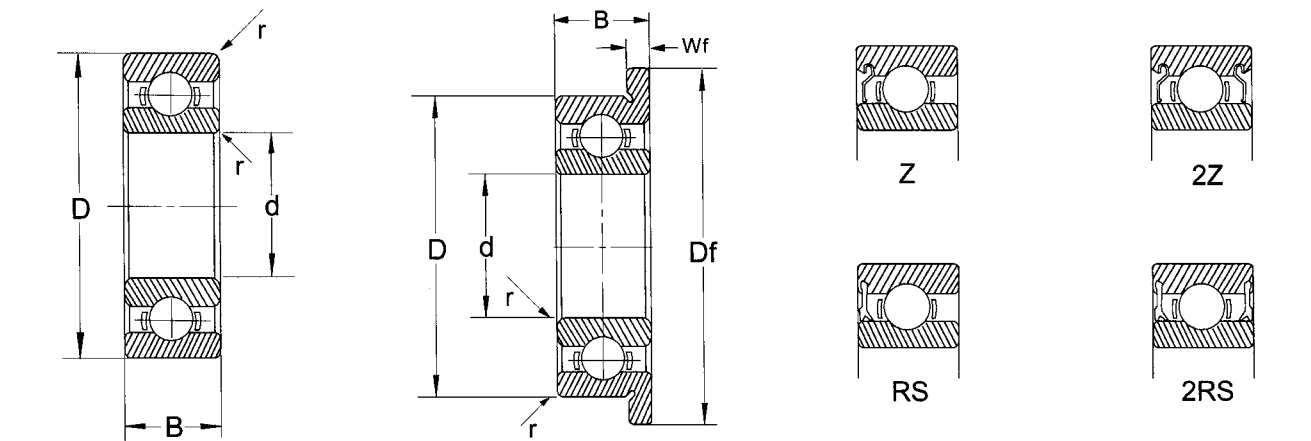
轴承代号 Bearing No.		内径 Inside Diameter d	外径 Outside Diameter D	宽		法兰尺寸		半径 Radius r min	基本额定载荷		所配套球数	
				Width B		Flange Dimensions			Basic Load Rating		Ball Complement	
				开式 Open	封闭带盖 Shielded & Sealed	开式 Open			动载荷 Dynamic Cr	静载荷 Static Cor	数量 Number	大小(规格) Size
						Df	Wf					
		mm	mm	mm	mm	mm	mm	mm	N	N		mm
682	682ZZ	2	5	1.5	2.3	...	...	0.08	169	50	...	...
MR52	MR52ZZ	2	5	2	2.5	...	...	0.10	169	50	...	...
692	692ZZ	2	6	2.3	3.0	...	...	0.15	330	98	...	...
MR62	MR62ZZ	2	6	2.5	2.5	...	...	0.15	330	98	...	...
MR72	MR72ZZ	2	7	2.5	3.0	...	...	0.15	385	127	...	...
602	602ZZ	2	7	2.8	3.5	...	...	0.15	385	127	...	...
682X	682XZZS	2.5	6	1.8	2.6	...	...	0.08	208	74	...	...
692X	692XZZ	2.5	7	2.5	3.5	...	...	0.15	385	127	...	...
MR82X	...	2.5	8	2.5	...	...	...	0.20	560	179	...	...
602X	602XZZS	2.5	8	2.8	4.0	...	...	0.15	550	175	...	...
673	L630	3	6	2	2.5	7.2	0.6	0.05	155	62	8	0.794
683	L730	3	7	2	3	8.1	0.5	0.15	293	129	7	1.19
693	...	3	8	3	4	9.5	0.7	0.15	284	107	6	1.588
603	...	3	9	3	5	10.5	0.7	0.15	440	187	7	1.588
623	...	3	10	4	4	11.5	1.0	0.15	440	187	7	1.588
674	L740	4	7	2	2.5	8.2	0.6	0.1	254	108	9	0.794
...	L840	4	8	2	3	9.2	0.6	0.1	391	147	7	1.191
684	L940	4	9	2.5	4	10.3	0.6	0.15	440	187	7	1.588
...	L1040	4	10	3	4	11.2	0.6	0.15	440	187	8	1.588
...	L1140W3.5	4	11	3.5	...	...	...	0.1	547	253	8	1.588
694	...	4	11	4	4	12.5	1.0	0.15	547	253	9	1.588
604	...	4	12	4	4	13.5	1.0	0.2	742	342	7	2.0
624	...	4	13	5	5	15	1.0	0.2	990	480	6	2.381
634	...	4	16	5	5	...	...	0.2	1333	622	8	2.381
675	L850	5	8	2	2.5	9.2	0.6	0.08	274	137	9	0.794
...	L950	5	9	2.5	3	...	...	0.1	499	205	10	1.191
...	L1050	5	10	3	4	...	...	0.1	511	244	8	1.588
685	L1150	5	11	3	5	12.5	0.8	0.2	547	253	9	1.588
...	L1150W4	5	11	4	...	...	...	0.15	547	253	8	1.588
695	...	5	13	4	4	15	1.0	0.2	831	400	8	2.0
605	...	5	14	5	5	16	1.0	0.2	1017	489	7	2.381
625	...	5	16	5	5	18	1.0	0.3	1333	622	8	2.381
635	...	5	19	6	6	...	...	0.3	1778	844	6	3.969

**GLD® 微型球轴承 Miniature Ball Bearing (d 2-10mm)**



轴承代号 Bearing No.		内径 Inside Diameter d	外径 Outside Diameter D	宽		法兰尺寸		半径 Radius r min	基本额定载荷		所配套球数	
				Width B		Flange Dimensions			Basic Load Rating		Ball Complement	
				开式 Open	封闭带盖 Shielded & Sealed	开式 Open			动载荷 Dynamic Cr	静载荷 Static Cor	数量 Number	大小(规格) Size
						Df	Wf					
		mm	mm	mm	mm	mm	mm	mm	N	N		mm
676	L1060	6	10	2.5	3	11.2	0.6	0.1	547	253	9	1.191
...	L1260	6	12	3	4	13.2	0.6	0.15	831	362	10	1.588
686	L1360	6	13	3.5	5	15	1.0	0.2	831	400	8	2.0
696	...	6	15	5	5	17	1.2	0.2	1333	622	8	2.381
606	...	6	17	6	6	19	1.2	0.3	1333	622	8	2.381
626	...	6	19	6	6	22	1.5	0.3	1778	844	6	3.969
626	...	6	19	6	6	22	1.5	0.3	1689	800	7	3.5
626-4	...	6.35	19	6	6	22	1.5	0.3	1778	844	6	3.969
627-4	...	6.35	22	7	7	...	...	0.3	2578	1289	7	3.969
677	L1170	7	11	2.5	3	12.2	0.6	0.1	448	205	9	1.191
...	L1370	7	13	3	3	14.2	0.6	0.15	880	391	11	1.588
687	L1470	7	14	3.5	5	16	1.0	0.2	898	457	8	2.0
697	...	7	17	5	5	19	1.2	0.2	1044	553	7	3.0
607	...	7	19	6	6	22	1.5	0.3	1711	800	6	3.969
627	...	7	22	7	7	...	...	0.3	2578	1289	7	3.969
678	L1280	8	12	2.5	3.5	13.2	0.6	0.1	508	254	11	1.191
...	L1480	8	14	3.5	4	15.6	0.8	0.15	880	391	9	1.588
688	L1680	8	16	4	5	18	1.0	0.3	1378	711	9	2.381
698	...	8	19	6	6	22	1.5	0.3	1266	644	7	3.5
608	...	8	22	7	7	25	1.5	0.3	2578	1289	7	3.969
628	...	8	24	8	8	...	...	0.3	2578	1289	7	3.969
689	L1790	9	17	4	5	19	1.0	0.2	1378	711	9	2.381
699	L2090	9	20	6	6	...	...	0.3	1378	711	9	2.381
609	...	9	24	7	7	...	...	0.3	2578	1289	7	3.969
629	...	9	26	8	8	...	...	0.3	3511	1778	7	4.763
...	L1910	10	19	5	5	...	...	0.3	1378	711	9	2.381
...	L1910W6	10	19	6	...	...	...	0.3	1378	711	9	2.381
...	L2010	10	20	5	6	...	...	0.3	1378	711	9	2.381





INCH SERIES (英制系列)

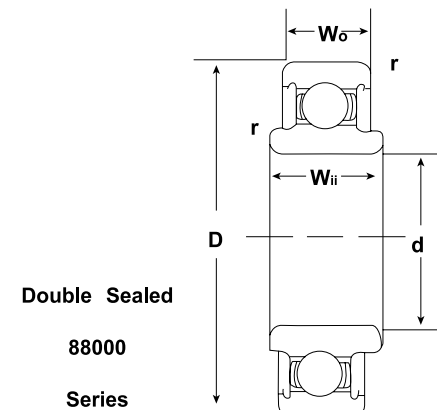
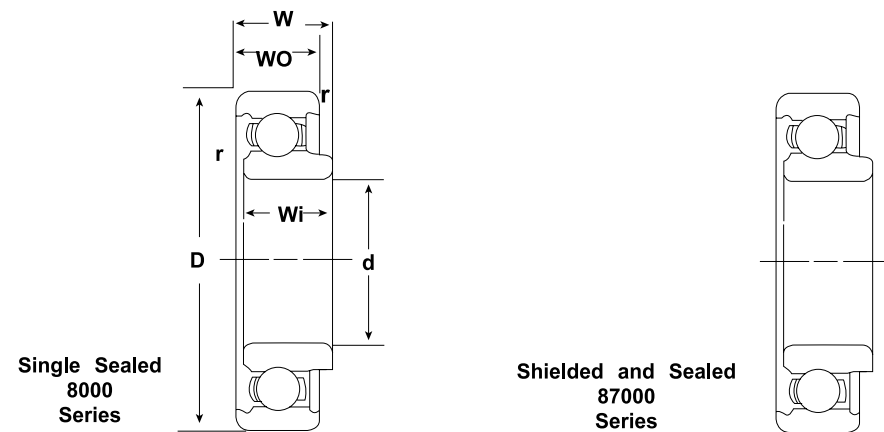
轴承代号 Bearing No.	内径 Inside Diameter d		外径 Outside Diameter D		宽 Width B				法兰尺寸 Flange Dimensions		半径 Radius r min	基本额定载荷 Basic Load Rating		所配套球数 Ball Complement	
					开式 Open		封闭带盖 Shielded & Sealed		开式 Open			动载荷 Dynamic Cr	静载荷 Static Cor	数量 Number	大小(规格) Size
	Df	Wf													
	mm	in	mm	in	mm	in	mm	in	mm	in	in	1b	1b		mm
R144	3.175	.1250	6.350	.2500	2.38	.0937	2.78	.1094	.296	.023	.004	35	13	...	...
R2-5	3.175	.1250	7.938	.3125	2.78	.1094	3.57	.1406	.359	.023	.004	64	24	...	...
R2-6	3.175	.1250	9.525	.3750	2.78	.1094	3.57	.1406	.422	.023	.006	73	29	...	...
R2	3.175	.1250	9.525	.3750	3.97	.1562	3.97	.1562	.440	.030	.012	73	29	7	1.588
R2A	3.175	.1250	12.700	.5000	4.37	.1719	4.37	.1719	...	...	.012	73	29	6	2.381
R155	3.969	.1562	7.938	.3125	2.78	.1094	3.18	.1250	.359	.023	.004	42	18	...	...
R156	4.763	.1875	7.938	.3125	2.78	.1094	3.18	.1250	.359	.023	.004	42	18	...	...
R166	4.763	.1875	9.525	.3750	3.18	.1250	3.18	.1250	.422	.023	.004	81	33	...	...
R3	4.763	.1875	12.700	.5000	3.97	.1562	4.98	.1960	.565	.042	.012	147	64	6	2.381
R3A	4.763	.1875	12.700	.5000	4.98	.1960	4.98	.1960	...	...	.012	147	64	...	...
R168	6.350	.2500	9.525	.3750	3.18	.1250	3.18	.1250	.422	.023	.004	42	20	...	...
R188	6.350	.2500	12.700	.5000	3.18	.1250	4.76	.1875	.547	.023	.006	123	55	8	1.588
R4	6.350	.2500	15.875	.6250	4.98	.1960	4.98	.1960	.690	.042	.012	167	77	8	2.381
R4A	6.350	.2500	19.050	.7500	5.56	.2188	7.14	.2812	...	...	.016	403	198	6	3.969
R6	9.525	.3750	22.225	.8750	5.56	.2188	7.14	.2812	.969	.062	.016	575	304	7	3.969
R8	12.700	.5000	28.575	1.125	6.35	.2500	7.94	.3125	.255	.062	.016	880	505	8	4.763
R8-7	11.113	.4375	28.575	1.125	6.35	.2500	...	...	...	...	.016	880	505	8	4.763

外形尺寸 Boundary dimensions mm				额定负荷 Load rating N		极限转速 Limiting speeds(rpm)			轴承型号 Bearing numbers		适用机型 sued. ON
						Grease		Oil	Deep Groove Ball Bearings		
d	D	B	rsmin	Cr	Cor	Noncontact	Contact		Ref.ON	GLD	
8	22	11	0.6	3300	1370	34000	-	40000	B8-74D	608X2NR-2RSTN1(W)	发电机 Alternators
	23	11	0.6	3300	1370	34000	-	40000	B8-79D	608X3.1NR-2RSTN1(W)	
	23	14	0.3	3910	1530	34000	-	40000	B8-23D	608X3.2N2-2RSTN1/A5(W)	
	23	14	0.6	3300	1370	34000	-	40000	B8-85D	608X3NR-2RSTN1(W)	
	23	11	0.6	2700	1270	32000	22000	38000	B10-46D	61900X3NR-2RSTN1(W)	发电机 Alternators
	26	8	0.3	4570	1970	30000	22000	36000	6000TT	6000N2-2RS(W)	
	26	10	0.3	4570	1970	30000	22000	36000	620000-2RS	62000-2RS/YA4(W)	
	27	11	0.6	4570	1970	30000	22000	36000	B10-50D	6000X3NR-2RSTN1(W)	
12	28	10	0.3	5115	2390	28000	18000	32000	62001-2RS	62001-2RS	发电机 Alternators
	28	12	0.3	5115	2388	28000	18000	32000	63001-2RS	63001-2RS	
	32	10	0.6	6820	3060	22000	17000	28000	B20-12D	6201/YA5-2RSNR	
	32	10	0.6	6106	2770	22000	17000	28000	-	6201/YA-2RS1	
	32	14	0.6	6106	2770	22000	17000	28000	-	62201-2RS	
15	32	11	0.3	5590	2830	24000	15000	28000	B15-7D	62002-2RS	发电机 Alternators
	35	11	0.6	7750	3570	20000	14000	24000	949100/295	6202-2RS1	
	35	11	0.6	7750	3570	20000	14000	24000	-	6202-2RSTN3	
	35	13	0.6	7650	3750	20000	14000	24000	-	6202X2-2RSTN3	
	35	13	0.6	7750	3750	20000	14000	24000	B15-69	6202X2-2RSNR	
	35	14	0.6	7750	3570	20000	14000	24000	-	62202-2RS	
	38	19	1.0	9450	4390	17000	13000	20000	348	63302X1-2RS	
	42	13	1.0	11400	5450	17000	13000	20000	-	6302-2RS	
	43	13	1.0	11430	5430	17000	13000	20000	319-2RS, 329	6302X1-2RSTN3	
	46	14	1.0	13580	6590	15000	11000	18000	336-2RS	63/15-2RSTN3	
	47	14	1.0	13580	6590	15000	11000	18000	B15-86D	6303/15-2RSTN3	
	47	18	1.0	13460	6485	17000	13000	20000	B15-83D, 275	6302X3-2RSTN3	
17	52	16	1.0	15760	7735	17000	12000	20000	385-2RS	6402X2-2RS	发电机 Alternators  张紧轮 Tension pulley
	40	12	0.6	9550	4800	17000	12000	20000	-	6203-2RS	
	40	12	0.6	9550	4800	17000	12000	20000	-	6203-2RSTN3	
	40	12	0.6	9550	4800	17000	12000	20000	-	6203-2LS/YA	
	40	12	0.6	9550	4800	17000	12000	20000	-	6203-2LS1	
	40	12	0.6	9550	4800	17000	12000	20000	-	6203-2RS1TN/YA4S1	
	47	14	1.0	13580	6590	15000	11000	18000	-	6303-2RS1	
	47	14	1.0	13466	6488	15000	11000	18000	-	6303-2RSTN3/YA	
	47	18	1.0	13466	6488	15000	11000	18000	-	6303X2-2RSTN3/YA	
	52	14	1.1	16000	7938	14000	10000	17000	10-3043-4	6304/17-2RS1	
	52	21	1.1	16000	7938	14000	10000	17000	10-62304-4	6304/17-2RS	
	52	16	1.1	15930	7875	14000	10000	17000	333	63/17-2RSTN3	
25	62	25	1.1	22388	11498	11000	8000	13000	W6305	63305-2RS	发电机 Alternators

外形尺寸 Boundary dimensions mm				额定负荷 Load rating N		极限转速 Limiting speeds(rpm)			轴承型号 Bearing numbers		适用机型 sued. ON
						Grease		Oil	GLD		
d	D	B	rsmin	Cr	Cor	Noncontact	Contact		Open	Closed	
8	28	9	0.3	4370	1977					638-Z/P6	50
12	28	8	0.3	5100	2370	28000	18000	32000	6001		150
									6001/P6		157
									6001/P53Z2		160
	32	10	0.6	6800	3050	22000	17000	28000	6201		50, 100
									6201/P6		50
									6201-P5		HN169M
37	12	1	9700	4200	20000	16000	24000	6301		153	
15	32	8	0.3	5600	2830	24000	-	28000	160002/P6		凸轮轴 Convex axle
	32	9	0.3	5600	2380	24000	15000	28000	6002		153
										6002-RS/P5	157
	35	11	0.6	7650	3750	20000	14000	24000	6202		153
									6202/P5		HN169M
										6202-RS/P6	247
									6202-2Z/P6		157
	42	13	1.0	114000	5450	17000	13000	20000	6302/P5		2V49
17	35	8	0.3	6000	3250	22000	-	26000	16003		100
									16003/P6		100
	35	10	0.3	6000	3250	22000	13000	26000	6003		50
									6003/P6		50
									6003/P5		2V49
										6003-2RS/P6	50
	40	12	0.6	9550	4800	17000	12000	20000	6203		
									6203/P5		HN169M
42	13	0.6	9550	4800	17000	12000	20000		6203X/P53Z2	141QMB 曲轴 (bent axle)	
47	14	1	13600	6650	15000	11000	18000	6303/P5			
20	42	12	0.6	9400	5000	18000	11000	20000	6004		
									6004/P6		
									6004/P53Z2		45QDC 曲轴 (bent axle)
									6004/P5		HN169, 2V49
										6004-2RS/P6	50
										6004-2RS/P5	169

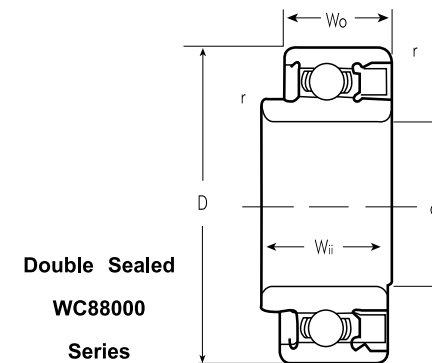
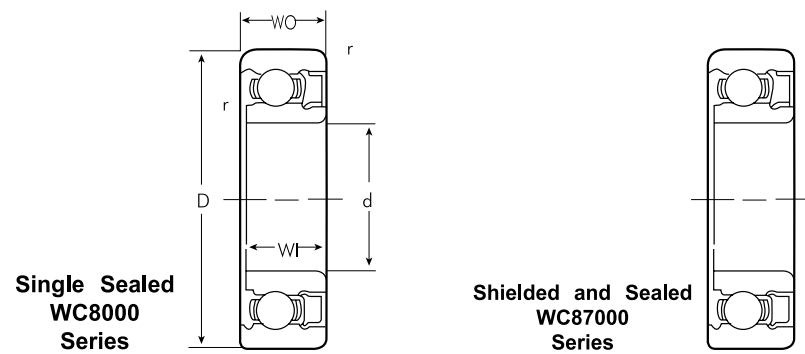
外形尺寸 Boundary dimensions mm				额定负荷 Load rating N		极限转速 Limiting speeds(rpm)			轴承型号 Bearing numbers		适用机型 sued. ON
						Grease		Oil	GLD		
d	D	B	rsmin	Cr	Cor	Noncontact	Contact		Open	Closed	
20	47	14	1	12800	6600	15000	11000	18000	6204		100, 125, 150
									6204/P6		157
									6204/P5		169HV
									6204/P53		50
									6204/P53Z2		50
										6204-RS/P6	247
	52	12	1.1	16004	7938	14000	10000	17000	68304X2		
	52	15	1.1	15900	7900	14000	10000	17000	6304		
									6304/P6		
									6304/P53Z2		150
22	47	14	1	12900	6800	14000	9500	16000		62/22X1-RS/P53Z2	253
	50	14	1	12900	6800	14000	9500	16000	62/22/YA5		253
										62/22YA5-2RS	253
	56	15	1	20700	10426	1300	9500	16000	63/22X2JD251		153
25	37	7	0.3	4500	3150	18000	10000	22000	61805		153
									6005/P5		2V49
	47	12	0.6	10100	5850	15000	9500	18000		6005-2RS/P6	
									6205/P5		
	52	15	1	14000	7850	13000	9000	15000	6205/P53Z2		Ax100
									6305/P5		
	62	17	1.1	20600	11200	11000	8000	13000	6305/P54Z2		247
										6305X2-Z/P53Z2	153-3 曲轴 (bent axle)
28	58	16	1.0	17915	9798	12000	8000	14000	62/28		157
	68	18	1.1	26700	14000	10000	7500	13000	63/28		157
									63/28YA5/P5		157
										63/28-RS	157
										63/28-RS/YA5P53Z2	157
30	55	13	1.0	13200	8300	13000	8000	15000	6006/P6		157
35	62	14	1.0	16000	10300	11000	6700	13000	6007/P63Z2		
									6007/P53Z2		153-4 曲轴 (bent axle)





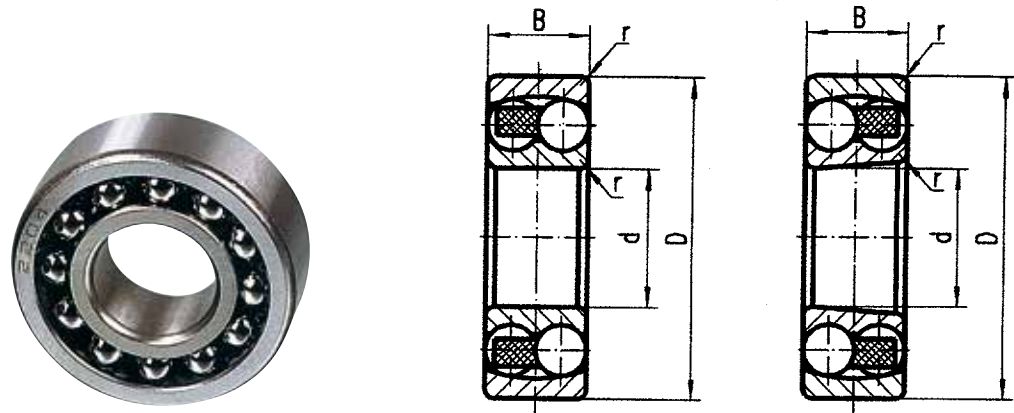
Flush ground bearings are noted with the suffix "G"

Bearing No.			Bore d		Outer Diameter D		Width					Width				Radius		Basic Load Rating lbs.		Weight lbs.		
							W		W <sub>o</sub>			W <sub>i</sub>		W <sub>ii</sub>		r		Dynamic C	Static C <sub>o</sub>	8000	87000	88000
8000	87000	88000	mm	in.	mm	in.	mm	in.	mm	in.	mm	in.	mm	in.	mm	in.						
8035	87035	88035	5	.1969	19	.7480	10.319	.4063	8	.3150		9.804	.3860	12.624	.4970	0.3	.012	524	198	0.022	0.023	0.026
8036	87036	88036	6	.2362	19	.7480	10.319	.4063	8	.3150		9.804	.3860	12.624	.4970	0.3	.012	524	198	0.024	0.025	0.027
8006	87006	88006	6	.2362	24	.9449	10.319	.4063	8	.3150		9.804	.3860	12.624	.4970	0.3	.012	747	314	0.046	0.048	0.055
8037	87037	88037	7	.2756	22	.8661	10.319	.4063	8	.3150		9.804	.3860	12.624	.4970	0.3	.012	740	306	0.037	0.039	0.043
8007	87007	88007	7	.2756	24	.9449	10.319	.4063	8	.3150		9.804	.3860	12.624	.4970	0.3	.012	747	317	0.045	0.047	0.051
8038	87038	88038	8	.3150	22	.8661	10.319	.4063	8	.3150		9.804	.3860	12.624	.4970	0.3	.012	740	306	0.036	0.038	0.040
8008	87008	88008	8	.3150	24	.9449	10.319	.4063	8	.3150		9.804	.3860	12.624	.4970	0.3	.012	747	317	0.043	0.044	0.048
8009	87009	88009	9	.3543	26	1.0236	10.319	.4063	8	.3150		9.804	.3860	12.624	.4970	0.6	.025	1025	438	0.051	0.053	0.057
8500	87500	88500	9	.3543	30	1.1811	12.700	.5000	9	.3543		12.192	.4800	16.401	.6457	0.6	.025	1047	465	0.078	0.095	0.105
8011	87011	88011	10	.3937	30	1.1811	12.700	.5000	9	.3543		12.192	.4800	16.401	.6457	0.6	.025	1047	465	0.075	0.077	0.091
8501	87501	88501	11	.4331	32	1.2598	12.700	.5000	10	.3937		12.192	.4800	15.400	.6063	0.6	.025	1375	626	0.099	0.101	0.104
8013	87013	88013	12	.4724	32	1.2598	12.700	.5000	10	.3937		12.192	.4800	15.400	.6063	0.6	.025	1375	626	0.095	0.097	0.099
8014	87014	88014	13	.5118	32	1.2598	12.700	.5000	10	.3937		12.192	.4800	15.400	.6063	0.6	.025	1375	266	0.091	0.093	0.095
8502	87502	88502	14	.5512	35	1.3780	12.700	.5000	11	.4331		12.192	.4800	14.399	.5669	0.6	.025	1525	747	0.111	0.115	0.125
8016	87016	88016	15	.5906	35	1.3780	12.700	.5000	11	.4331		12.192	.4800	14.399	.5669	0.6	.025	1525	747	0.106	0.108	0.119
8612	87612	88612	16	.6299	35	1.3780	12.700	.5000	11	.4331		12.192	.4800	14.399	.5669	0.6	.025	1525	747	0.101	0.105	0.114
8503	87503	88503	15	.5906	42	1.6535	15	.5906	13	.5118		14	.5512	17	.6693	1.0	.040	1940	976	0.188	0.193	0.210
8603	87603	88603	17	.6693	40	1.5748	14.288	.5625	12	.4724		13.665	.5380	16.601	.6536	0.6	.025	1940	976	0.150	0.154	0.166
8504	87504	88504	17	.6693	47	1.8504	16	.6299	14	.5512		15	.5906	18	.7087	1.0	.040	2885	1494	0.254	0.257	0.279
8604	87604	88604	20	.7874	47	1.8504	15.875	.6250	14	.5512		15.240	.6000	17.750	.6988	1.0	.040	2885	1494	0.232	0.237	0.259
8505	87505	88505	20	.7874	52	2.0472	19	.7480	15	.5906		18	.7087	23	.9055	1.0	.040	3150	1785	0.345	0.352	0.398
8605	87605	88605	25	.9843	52	2.0472	15.875	.6250	15	.5906		15.240	.6000	16.749	.6594	1.0	.040	3150	1785	0.287	0.292	0.304
8026	87026	88026	25	.9843	62	2.4409	21	.8268	17	.6693		21	.8268	25	.9843	1.0	.040	3150	1785	0.590	0.600	0.650
8506	87506	88506	26	1.0236	52	2.0472	15.875	.6250	15	.5906		15.240	.6000	16.749	.6594	1.0	.040	3150	1785	0.277	0.282	0.294
8606	87606	88606	30	1.1811	62	2.4409	20	.7874	16	.6299		19	.7480	24	.9449	1.0	.040	1970	1140	0.495	0.506	0.571
8507	87507	88507	30	1.1811	72	2.8346	23	.9055	19	.7480		23	.9055	27	1.0630	1.0	.040	1970	1140	0.860	0.890	0.970
8607	87607	88607	35	1.3780	72	2.8346	21	.8268	17	.6693		20	.7874	25	.9843	1.0	.040	2120	1330	0.695	0.708	0.765
8508	87508	88508	35	1.3780	80	3.1496	25	.9843	21	.8268		25	.9843	29	1.1417	1.5	.060	2120	1330	1.100	1.120	1.200
8608	87608	88608	40	1.5748	80	3.1496	24	.9449	21	.8268		24	.9449	27	1.0630	1.0	.040	2960	1820	1.030	1.070	1.180
8509	87509	88509	40	1.5748	90	3.5433	27	1.0630	23	.9055		27	.0630	31	1.2205	1.5	.060	2960	1820	1.530	1.560	1.650
8609	87609	88609	45	1.7717	85	3.6465	24	.9449	21	.8268		24	.9449	27	1.0630	1.0	.040	3300	2050	1.190	1.200	1.220
8609	87609	88609	45	1.7717	100	3.9370	30	1.1811	25	.9843		30	1.1811	35	1.3780	1.5	.060	3300	2050	1.960	2.010	2.190
8510	87510	88510	50	1.9615	90	3.5433	26	1.0236	22	.8661		26	1.0236	30	1.1811	1.0	.040	3560	2350	1.270	1.300	1.400
8511	87511	88511	55	2.1654	100	3.9370	27	1.0630	23	.9055		27	1.0630	31	1.2205	1.5	.060	4390	2970	1.600	1.640	1.780



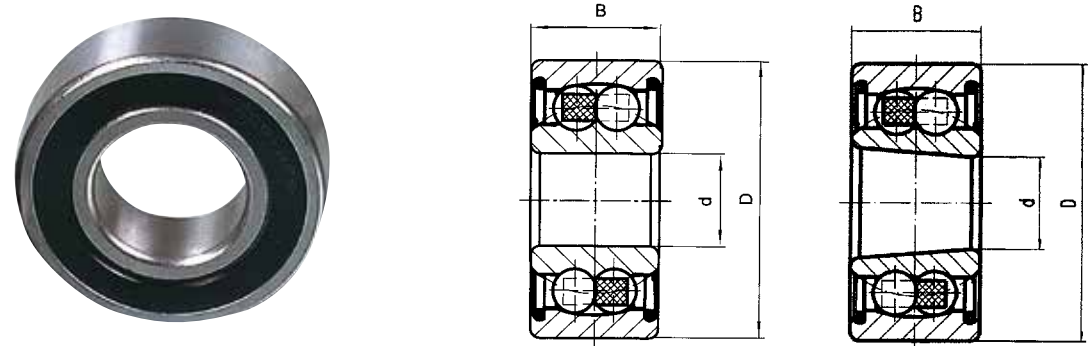
Bearing No.			Bore d		Outer Diameter D		Width W <sub>i</sub>		Width				Radius r		Basic Load Rating lbs.	
									W <sub>ii</sub>		W <sub>o</sub>		mm	in.	Dynamic C	Static C <sub>0</sub>
WC8000	WC87000	WC88000	mm	in.	mm	in.	mm	in.	mm	in.	mm	in.	mm	in.		
WC8006	WC87006	WC88006	6	.2362	24	.9449	9.804	.3860	12.624	.4970	10.319	.4063	0.3	.012	747	317
WC8007	WC87007	WC88007	7	.2756	24	.9449	9.804	.3860	12.624	.4970	10.319	.4063	0.3	.012	747	317
WC8008	WC87008	WC88008	8	.3150	24	.9449	9.804	.3860	12.624	.4970	10.319	.4063	0.3	.012	747	317
WC8009	WC87009	WC88009	9	.3543	30	1.1811	12.192	.4800	16.401	.4970	12.700	.5000	0.6	.025	1047	465
WC8011	WC87011	WC88011	11	.4331	32	1.2598	12.192	.4800	15.400	.6457	12.700	.5000	0.6	.025	1375	626
WC8013	WC87013	WC88013	13	.5118	32	1.2598	12.192	.4800	15.400	.6063	12.700	.5000	0.6	.025	1375	626
WC8014	WC87014	WC88014	14	.5512	35	1.3780	12.192	.4800	14.399	.5669	12.700	.5000	0.6	.025	1525	747
WC8016	WC87016	WC88016	16	.6299	35	1.3780	12.192	.4800	14.399	.5669	12.700	.5000	0.6	.025	1525	747
WC8026	WC87026	WC88026	26	1.0236	52	2.0472	15.240	.6000	16.749	.6594	15.875	.6250	1	.04	3150	1785
WC8035	WC87035	WC88035	5	.1969	19	.748	9.804	.3860	12.624	.4970	10.319	.4063	0.3	.012	524	198
WC8036	WC87036	WC88036	6	.2362	19	.748	9.804	.3860	12.624	.4970	10.319	.4063	0.3	.012	524	198
WC8037	WC87037	WC88037	7	.2756	22	.8661	9.804	.3860	12.624	.4970	10.319	.4063	0.3	.012	740	306
WC8038	WC87038	WC88038	8	.3150	22	.8661	9.804	.3860	12.624	.4970	10.319	.4063	0.3	.012	740	306
WC8039	WC87039	WC88039	9	.3543	26	1.0236	9.804	.3860	12.624	.4970	10.319	.4063	0.6	.025	1025	438
WC8500	WC87500	WC88500	10	.3937	30	1.1811	12.192	.4800	16.401	.6457	12.700	.5000	0.6	.025	1047	465
WC8501	WC87501	WC88501	12	.4724	32	1.2598	12.192	.4800	15.400	.6063	12.700	.5000	0.6	.025	1375	626
WC8502	WC87502	WC88502	15	.5906	35	1.3780	12.192	.4800	14.399	.5669	12.700	.5000	0.6	.025	1525	747
WC8503	WC87503	WC88503	17	.6693	40	1.5748	13.665	.5380	16.601	.5636	14.288	.5625	0.6	.025	2149	1075
WC8504	WC87504	WC88504	20	.874	47	1.8504	15.240	.6000	17.750	.6988	15.875	.6250	1	.04	2885	1494
WC8505	WC87505	WC88505	25	.9843	52	2.0472	15.240	.6000	16.749	.6594	15.875	.6250	1	.04	3150	1785
WC8506	WC87506	WC88506	30	1.1811	62	2.4409	19	.7480	24	.9449	20	.7874	1	.04	3363	2256
WC8507	WC87507	WC88507	35	1.3780	72	2.8346	20	.7874	25	.9843	21	.8268	1	.04	2120	1330
WC8508	WC87508	WC88508	40	1.5748	80	3.1496	24	.9449	27	1.0630	24	.9449	1	.04	2960	1820
WC8509	WC87509	WC88509	45	1.7717	85	3.3465	24	.9449	27	1.0630	24	.9449	1	.04	3300	2050
WC8510	WC87510	WC88510	50	1.9685	90	3.5433	26	1.0236	30	1.1811	26	1.0236	1	.04	3560	2350
WC8511	WC87511	WC88511	55	2.1654	100	3.9370	27	1.0630	31	1.2205	27	1.0630	1.5	.06	4390	2970
		WC88603	17	.6693	47	1.8504			18	.7087	16	.6299	1.5	.06		
		WC88604	20	.7874	52	2.0472			23	.9055	19	.7480	1.5	.06		
		WC88605	25	.9483	62	2.4409			25	.9843	21	.8268	1.5	.06		





轴承代号 Bearing No.		主要尺寸 /mm Boundary Dimensions			基本额定载荷 /kN Basic Load Rating		极限转速 /r.min <sup>-1</sup> Speed Rating		质量 /kg Weight
圆柱孔 10000 (TN1,M) Cylindrical	圆锥孔 10000K (KTN1,KM) Tapered Bore	d	D	B	Cr	Cor	脂 Grease Lubrication	油 Oil Lubrication	
135		5	19	6	2.5	0.55	32000	38000	0.009
196(V6)		6	15	5	1.6	0.40	31000	37000	0.006
126			19	6	2.5	0.55	32000	38000	0.009
127		7	22	7	2.7	0.65	30000	36000	0.014
108		8	22	7	2.7	0.65	30000	36000	0.014
129		9	26	8	3.9	0.95	26000	32000	0.022
1200	1200K	10	30	9	5.48	1.20	24000	28000	0.035
2200	2200K		30	14	7.12	1.58	24000	28000	0.050
1300	1300K		35	11	7.22	1.62	20000	24000	0.060
2300	2300K		35	17	11.0	2.45	18000	22000	0.090
1201	1201K	12	32	10	5.55	1.25	22000	26000	0.042
2201	2201K		32	14	8.80	1.80	22000	26000	0.059
1301	1301K		37	12	9.42	2.12	18000	22000	0.070
2301	2301K		37	17	12.5	2.72	17000	22000	0.104
1202	1202K	15	35	11	7.48	1.75	18000	22000	0.051
2202	2202K		35	14	7.65	1.80	18000	22000	0.06
1302	1302K		42	13	9.50	2.28	16000	20000	0.1
2302	2302K		42	17	12.0	2.88	14000	18000	0.11

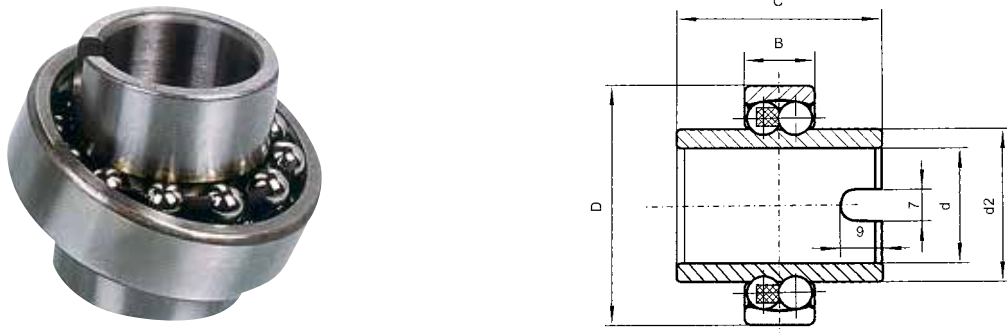
轴承代号 Bearing No.		主要尺寸 /mm Boundary Dimensions			基本额定载荷 /kN Basic Load Rating		极限转速 /r.min <sup>-1</sup> Speed Rating		质量 /kg Weight
圆柱孔 10000 (TN1,M) Cylindrical	圆锥孔 10000K (KTN1,KM) Tapered Bore	d	D	B	Cr	Cor	脂 Grease Lubrication	油 Oil Lubrication	
1203	1203K	17	40	12	7.90	2.02	16000	20000	0.076
2203	2203K		40	16	9.00	2.45	16000	20000	0.09
1303	1303K		47	14	12.5	3.18	14000	17000	0.14
2303	2303K		47	19	14.5	3.58	13000	16000	0.17
1204	1204K	20	47	14	9.95	2.65	14000	17000	0.12
2204	2204K		47	18	12.5	3.28	14000	17000	0.15
1304	1304K		52	15	12.5	3.38	12000	15000	0.17
2304	2304K		52	21	17.8	4.75	11000	14000	0.22
1205	1205K	25	52	15	12.0	3.30	12000	14000	0.14
2205	2205K		52	18	12.5	3.40	12000	14000	0.19
1305	1305K		62	17	17.8	5.05	10000	13000	0.26
2305	2305K		62	24	24.5	6.48	9500	12000	0.35
1206	1206K	30	62	16	15.8	4.70	10000	12000	0.23
2206	2206K		62	20	15.2	4.60	10000	12000	0.26
1306	1306K		72	19	21.5	6.28	8500	11000	0.398
2306	2306K		72	27	31.5	8.68	8000	10000	0.50
1207	1207K	35	72	17	15.8	5.08	8500	10000	0.32
2207	2207K		72	23	21.8	6.65	8500	10000	0.44
1307	1307K		80	21	25.0	7.95	7500	9500	0.54
2307	2307K		80	31	39.2	11.0	7100	9000	0.68
1208	1208K	40	80	18	19.0	6.95	8500	10000	0.42
2208	2208K		80	23	31.9	10	7500	9000	0.51
1308	1308K		90	23	33.8	11.2	6700	8000	0.72
2308	2308K		90	33	54.0	16.0	6300	7500	0.93
1209	1209K	45	85	19	22.9	7.8	7500	9000	0.47
2209	2209K		85	23	32.5	10.6	7000	8500	0.55
1309	1309K		100	25	39.0	13.4	6300	7500	0.96
2309	2309K		100	36	63.7	19.3	5600	6700	1.25
1210	1210K	50	90	20	26.5	9.15	7000	8500	0.53
2210	2210K		90	23	33.8	11.2	6300	7500	0.60
1310	1310K		110	27	43.6	14.0	5600	6700	1.2
2310	2310K		110	40	63.7	20.0	5300	6300	1.65



轴承代号 Bearing No.		主要尺寸 /mm Boundary Dimensions			基本额定载荷 /KN Basic Load Rating		极限转速 /r.min <sup>-1</sup> Speed Rating	质量 /kg Weight
圆柱孔 10000 (TN1,M) Cylindrical	圆锥孔 10000K (KTN1,KM) Tapered Bore	d	D	B	Cr	Cor	油 Oil Lubrication	
2200-2RS	2200-2RSK	10	30	14	5.53	1.18	17000	0.048
2201-2RS	2201-2RSK	12	32	14	6.24	1.43	16000	0.053
2202-2RS	2202-2RSK	15	35	14	7.41	1.76	14000	0.058
2302-2RS	2302-2RSK		42	17	10.8	2.6	12000	0.11
2203-2RS	2203-2RSK	17	40	16	8.84	2.2	12000	0.089
2303-2RS	2303-2RSK		47	19	12.7	3.4	11000	0.16
2204-2RS	2204-2RSK	20	47	18	12.7	3.4	10000	0.14
2304-2RS	2304-2RSK		52	21	14.3	4.0	9500	0.21
2205-2RS	2205-2RSK	25	52	18	14.3	4.0	9000	0.16
2305-2RS	2305-2RSK		62	24	19.0	5.4	7500	0.34
2206-2RS	2206-2RSK	30	62	20	15.6	4.65	7500	0.26
2306-2RS	2306-2RSK		72	27	22.5	6.8	6700	0.51
2207-2RS	2207-2RSK	35	72	23	19.0	6.0	6300	0.41
2307-2RS	2307-2RSK		80	31	26.5	8.5	5600	0.70
2208-2RS	2208-2RSK	40	80	23	19.9	6.95	5600	0.50
2308-2RS	2308-2RSK		90	33	33.8	11.2	5000	0.96

轴承代号 Bearing No.		主要尺寸 /mm Boundary Dimensions			基本额定载荷 /KN Basic Load Rating		极限转速 /r.min <sup>-1</sup> Speed Rating	质量 /kg Weight
圆柱孔 10000 (TN1,M) Cylindrical	圆锥孔 10000K (KTN1,KM) Tapered Bore	d	D	B	Cr	Cor	油 Oil Lubrication	
2209-2RS	2209-2RSK	45	85	23	22.9	7.8	5300	0.53
2309-2RS	2309-2RSK		100	36	39.0	13.4	4500	1.3
2210-2RS	2210-2RSK	50	90	23	22.9	8.15	4800	0.57
2310-2RS	2310-2RSK		110	40	43.6	14.0	4000	1.65

内圈加长调心球轴承 Self-aligning Ball Bearings, with Large Inner Ring



轴承代号 Bearing No.	主要尺寸 /mm Boundary Dimensions					基本额定载荷 /KN Basic Load Rating		极限转速 /r.min <sup>-1</sup> Speed Rating	质量 /kg Weight
圆柱孔 (TN1,M) Cylindrical	d	D	B	d2	C	Cr	Cor	油 Oil Lubrication	
11204	20	47	14	28.9	40	12.7	3.4	9000	0.18
11205	25	52	15	33.3	44	14.3	4.0	8000	0.22
11305		62	17	38	48	19.0	5.4	6700	0.41
11206	30	62	16	40.1	48	15.6	4.65	6700	0.35
11306		72	19	45	52	22.5	6.8	5600	0.61
11207	35	72	17	47	52	19.0	6.0	5600	0.54
11307		80	21	51.7	56	26.5	8.5	5000	0.81
11208	40	80	18	54	56	19.9	6.95	5000	0.72
11308		90	23	61.4	58	33.8	11.2	4500	1.10







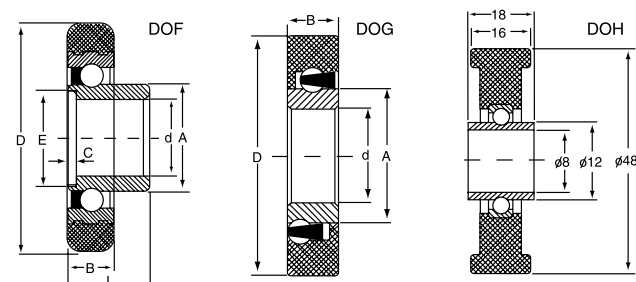


Bearing No.	Dimension (mm)							Ball	
	D	d	F	B	A	L	a	No.	Dia
DOB2101	21	19	8	8.6	8	13.6	150	6	1/8
DOB2102	21	6	19.4	7	7.6	10.8	150	6	1/8
DOB2103	21	6	20	7	7.5	11	156	6	1/8
DOB2104	21	6	20	7	7.5	13.8	156	6	1/8
DOB2105	21.5	6	20	8	10.5	15.5	156	6	1/8
DOB2201	22	6	20	7.3	8	14	150	6	1/8
DOB2202	22	6	20	9	9.4	12	150	6	1/8
DOB2203	22	6	20	9	9	14.5	150	6	1/8
DOB2204	22	6	20	9	9.4	15.8	150	6	1/8
DOB2205	22	6	20	9	9.8	15.8	150	6	1/8
DOB2206	22	6	20	8		16	150	6	1/8
DOB3001	30	7	27.8	11		18	150	7	5/32
DOC1901	19.5	4	17.7	7		11.5	150	6	1/8
DOC2001	20.5	5	18.6	7		12	150	6	1/8
DOC2002	20.8	5	19.4	7		7.5	156	7	1/8
DOC2101	21	5	20	7		7	156	6	1/8
DOC2102	21	5	20.4	7		7.5	156	6	1/8
DOC2201	22	6	20	9		11.3	150	7	1/8
DOC2202	22	6	20	9		11.3	156	6	1/8
DOC2203	22	6	20	10		11	156	6	1/8
DOC2204	22.4	6	20	9		11.3	150	7	1/8
DOC2701	27.3	6	25	11		12	156	7	5/32
DOC3001	30	7	28	12		13	156	7	5/32

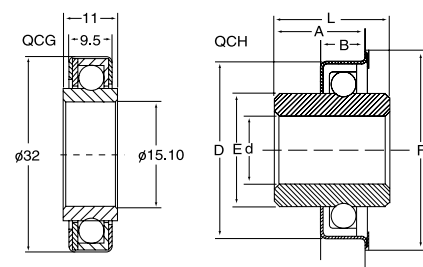
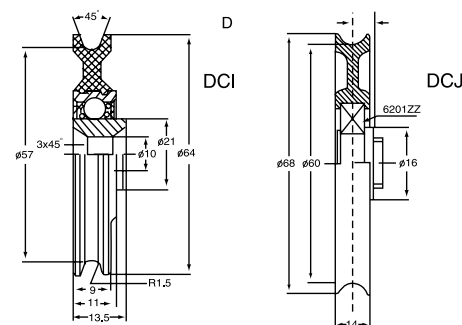
Bearing No.	Dimension (mm)							Ball	
	D	d	F	B	A	L	a	No.	Dia
DOD2101	21.6	6	20.6	8	8.5	11.5	11	6	1/8
DOD2701	27	6	25	8	11.5	14.5	4.5	7	5/32
DOD2801	28	6	24	8	11.5	14.5	2.25	7	5/32
DOD2802	28	6	24	8.3	11.5	14.5	2.1	7	5/32

Bearing No.	Dimension (mm)							Ball	
	D	d	F	B	A	L	a	No.	Dia
DOE2101	21	4	19	7	7.7	11	120	6	1/8
DOE2201	22	6	19	8	8.5	11.4	99	6	1/8
DOE2202	22	6	19	8	8.5	11.4	100	6	1/8

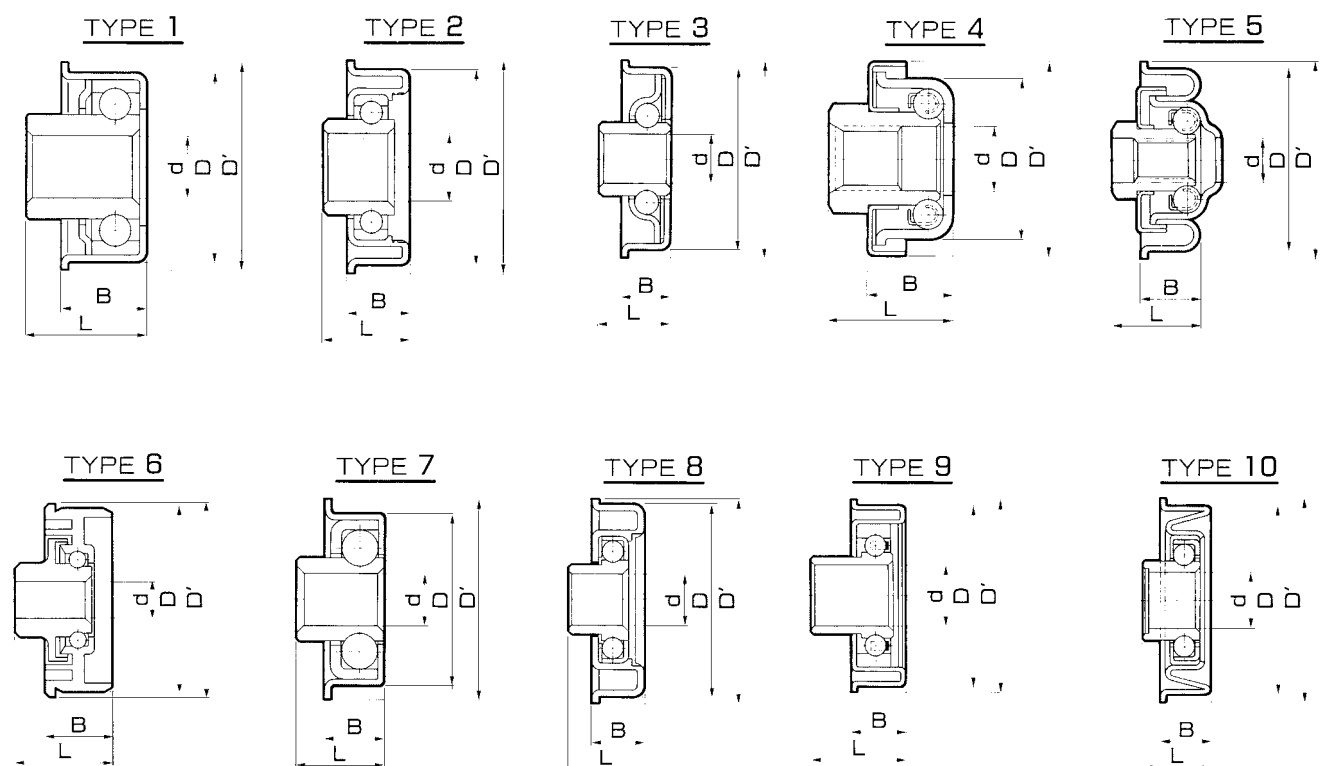




Bearing No.	Dimension (mm)						
	D	d	A	B	L	E	C
DOF-2206	22	6	10	6	10	8	1.5
DOF-2406	24	6	10	6	10	8	1.5
DOF-2506	25	6	10	6	10	8	1.5
DOG-2206	22	6	9.5	7			
DOG-2406	24	6	9.5	7			
DOG-3008	30	8	14.5	8			



Bearing No.	Dimension (mm)						
	D	d	A	B	L	E	C
QCG01	28.6	9.65	17.5	31.75	7.9	17.53	20.70
QCG02	28.6	9.65	17.5	31.75	7.9	13.1	17.47
QCG03	28.6	8.1	17.4	31.75	8	16	18.85
QCG04	28.6	9.6	17.5	31	7	14.5	20



**GLD® 带座冲压轴承 Pressed Radial Bearing with Housing**

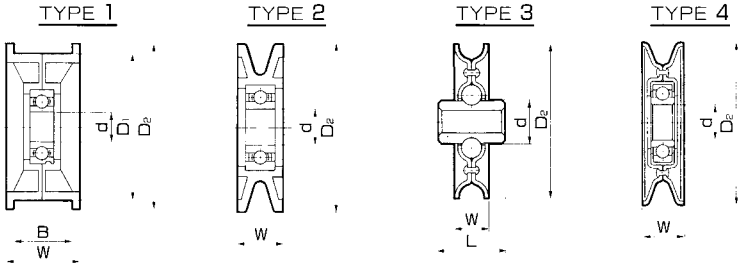
Part No.	D <sub>1</sub>	D'	d	B	L	Type	Remark
PBH001	16.7	18.5	6.2	7.0	10.0	7	
PBH002	19.8	22.2	6.2	10.0	14.0	1	
PBH003	22.0	25.0	7.0	10.0	14.0	1	
PBH004	25.9	28.3	8.2	14.5	19.0	9	with Polyamide Retainer
PBH005	26.0	28.5	8.2	15.0	18.0	6	Polyacetals Housing
PBH006	26.1	28.0	8.1	11.0	14.0	1	
PBH007	26.1	28.5	8.1	9.5	13.5	8	
PBH008	29.4	31.5	8.3	9.2	14.2	8	
PBH009	30.6	33.5	12.2	13.0	17.0	1	
PBH010	35.2	38.0	12.2	9.0	14.0	8	d=8.2Ø available
PBH011	35.2	37.8	12.2	12.5	17.0	6	Polyacetals Housing
PBH012	35.7	38.0	12.2	11.0	16.0	2	
PBH013	35.7	38.0	12.2	9.0	13.0	8	All Stainless Steel
PBH014	35.9	41.7	12.2	11.0	17.5	9	with Polyamide Retainer
PBH015	36.3	40.5	12.2	11.0	17.5	9	with Polyamide Retainer
PBH016	39.2	42.5	12.2	11.0	17.5	9	with Polyamide Retainer
PBH017	39.5	42.5	12.1	12.7	17.7	9	with Polyamide Retainer
PBH018	39.5	42.5	12.2	12.0	17.2	8	
PBH019	39.9	42.5	12.2	9.0	14.0	8	
PBH020	40.0	49.0	M16.0	21.0	31.0	4	
PBH021	40.7	44.0	11.8*	12.7	15.0	3	d=12.1Ø available
PBH022	40.7	44.0	11.8*	10.0	14.0	10	d=12.1Ø available
PBH023	41.9	43.5	12.2	9.0	14.0	8	
PBH024	41.9	44.0	8.2	10.0	15.0	2	d=12.1Ø available
PBH025	42.3	45.0	8.1	11.0	18.0	2	
PBH026	42.0	43.5	8.1	25.0	32.0	6	
PBH027	43.6	48.6	12.2	9.0	15.5	8	
PBH028	43.6	48.6	12.1	10.5	17.0	9	with Polyamide Retainer
PBH029	44.1	48.5	15.2	12.0	14.7	8	d=12.1Ø available
PBH030	45.0	48.3	11.3*	10.7	13.4	3	d=8.0Ø available
PBH031	45.0	70.0	8.0	15.0	17.0	3	with Wide Flange
PBH032	45.2	48.3	8.0	11.0	13.5	2	
PBH033	45.6	48.8	12.2	12.0	17.0	8	
PBH034	47.0	50.0	8.2	9.0	13.0	2	d=6.0Ø,9.2Ø,10.2Ø available
PBH035	47.0	50.0	8.2	9.0	13.0	8	All Stainless Steel
PBH036	47.3	50.0	M10.0	15.0	22.2	5	
PBH037	47.5	50.8	11.8*	12.7	15.0	3	d=10.0Ø,11.2Ø,12.1Ø available
PBH038	47.5	50.8	11.8*	12.7	16.7	10	d=12.1 available
PBH039	47.5	50.8	12.2	15.0	21.0	6	with Polyamide Housing,6002 Bearing inserted
PBH040	48.0	50.0	6.2	9.0	13.0	2	d=8.2Ø available
PBH041	52.1	54.6	17.2	14.0	20.5	9	with Retainer
PBH042	52.1	54.6	12.2	14.2	54.6	8	Single Seal
PBH043	53.1	57.3	17.2	14.0	20.1	9	with Felt
PBH044	53.1	57.0	12.0	14.9	14.9	9	6201ZZ Bearing inserted
PBH045	53.2	57.0	17.2	12.7	16.7	2	d=12.2Ø,15.2Ø, available
PBH046	53.2	56.5	12.0	17.0	17.0	6	Polyacetals Housing,6201 Bearing inserted
PBH047	54.0	57.0	20.0	12.0	16.0	3	
PBH048	54.3	57.0	12.2	12.7	16.7	2	
PBH049	54.8	60.5	17.2	12.7	16.7	2	d=12.2Ø,D=58.0 available
PBH050	55.2	60.5	20.3	14.0	18.0	8	
PBH051	55.2	60.5	20.3	14.0	18.0	8	All Stainless Steel

\*Shows dimension of the opposite side

**GLD® 带座冲压轴承 Pressed Radial Bearing with Housing**

Part No.	D <sub>1</sub>	D'	d	B	L	Type	Remark
PBH052	56.0	59.3	12.1	12.7	20.7	2	
PBH053	56.0	59.3	12.1	12.7	20.7	2	with Felt, Double Shields
PBH054	56.3	60.0	M12.0	13.0	20.8	5	
PBH055	56.3	60.0	12.0	14.9	14.9	9	6201ZZ Bearing inserted
PBH056	56.5	60.0	15.0*	19.0	25.0	9	d=12.7Ø,16.2Ø available
PBH057	57.2	60.5	11.8*	12.7	16.7	10	d=12.1Ø available
PBH058	57.2	60.5	11.8*	12.7	15.0	3	d=12.1Ø available
PBH059	57.5	60.5	12.2	14.0	19.0	8	All Stainless Steel
PBH060	57.7	60.8	12.2	11.0	17.5	9	with Polyamide Retainer
PBH061	59.5	62.7	11.8*	12.7	16.7	10	d=12.1Ø available
PBH062	62.5	65.6	12.2	11.0	17.5	9	with Polyamide Retainer
PBH063	65.0	68.2	11.8*	12.7	18.7	10	d=12.1Ø available
PBH064	66.9	73.0	20.1	17.0	26.4	9	with Felt
PBH065	66.9	73.0	20.1	17.0	24.0	8	
PBH066	67.2	70.3	12.2	11.0	17.5	9	with Polyamide Retainer
PBH067	69.2	74.5	16.2	23.0	30.0	9	d=19.2Ø available
PBH068	70.0	72.5	20.0	12.0	16.0	3	
PBH069	70.7	76.3	17.2	13.0	18.0	2	
PBH070	71.5	74.7	11.8*	12.7	18.7	10	HEX bore
PBH071	72.0	75.1	12.2	11.0	17.5	9	with Polyamide Retainer
PBH072	75.8	79.0	12.2	11.0	17.5	9	with Polyamide Retainer
PBH073	83.0	86.0	20.0	12.0	16.0	3	

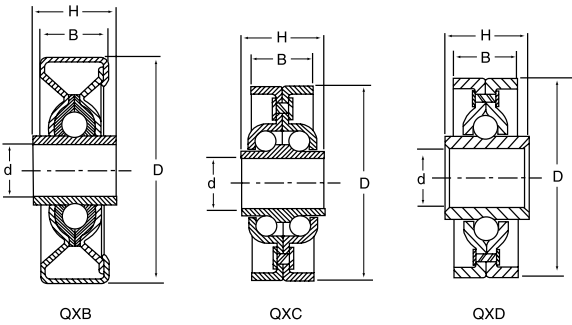
**导轮 Idler Pulley**



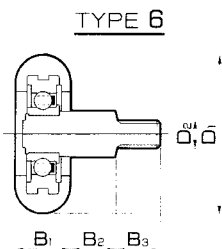
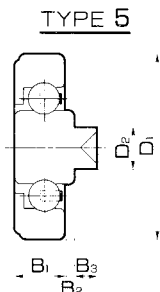
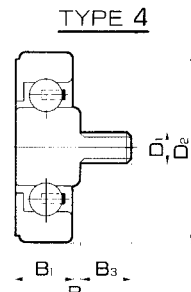
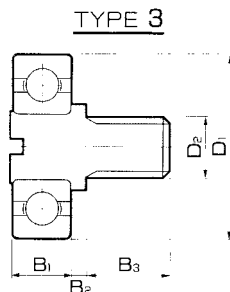
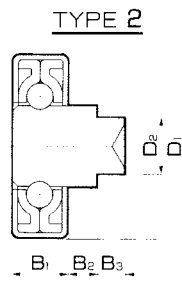
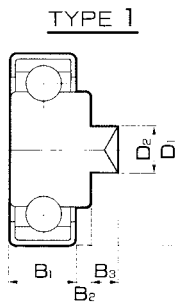
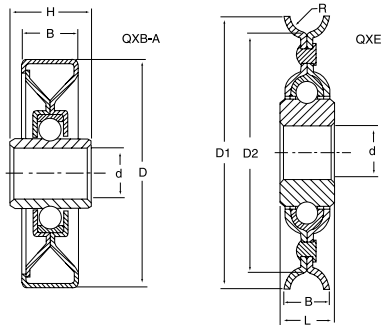
Part No.	D <sub>1</sub>	D <sub>2</sub>	d	B	W	L	Type	Remark
IP001	-	45.0	6.0	-	9.4	14.0	3	
IP002	40.0	48.0	12.0	20.0	26.0	-	1	For back side of B type V-Belt, #6201 Bearing
IP003	-	70.0	-	-	19.0	42.0	2	A type V-Belt, #6202+M10 Shaft
IP004	-	68.0	15.0	-	17.6	-	4	6202 ZZ inserted
IP005	70.0	80.0	15.0	20.0	25.0	-	1	For back side of B type V-Belt, #6202 Bearing
IP006	-	80.0	15.0	-	21.0	-	2	B type V-Belt, #6202 Bearing
IP007	-	101.6	17.0	-	19.1	21.2	4	
IP008	130.0	144.0	15.0	30.0	38.0	-	1	For back side of C type V-Belt, #6202X2 Bearings

\*Polyamide Housing



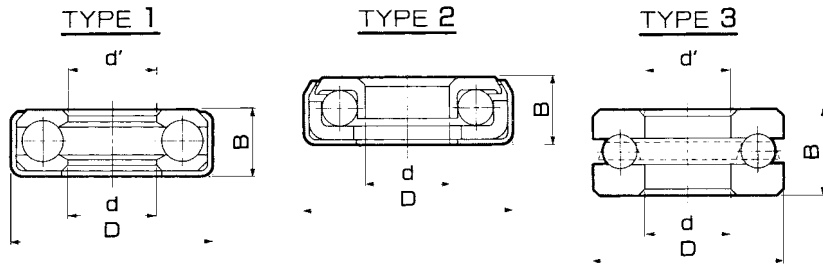


Bearing No.	Dimension (mm)				Ball		Loading(Lbs)
	D	d	B	H	No.	Dia	
QXB3801	38	6.11	12	24.7	7	1/4	40
QXB3802	38	6.55	14.3	20.64	7	1/4	40
QXB4801	48	8.1	16.2	24	8	1/4	75
QXB4901	49.2	6.55	15.88	20.64	7	1/4	50
QXB4902	49.2	6.4	16	20.8	7	1/4	50
QXB4903	49.2	6.55	15.88	23.8	7	1/4	55
QXB4904	49.2	8.13	15.88	20.64	8	1/4	60
QXB4905	49.2	6.55	17	20.64	7	1/4	75
QXB4906	49.2	6.55	14.3	22	7	1/4	75
QXB4907	49.2	6.4	16	20.8	7	1/4	100
QXB4908	49.2	6.55	14.3	22.2	8	1/4	100
QXB4909	49.2	7.94	14.3	22.2	8	1/4	100
QXB4910	49.2	6.5	14.3	22	8	1/4	150
QXB4911	49.2	8.15	14.3	22	8	1/4	150
QXB4912	49.2	6.5	14.3	20.5	8	1/4	150
QXB5001	50.8	6.5	14.3	22	8	1/4	150
QXC4801	47.63	6.55	15.88	20.64	18	3/16	120
QXC4802	47.63	8.18	15.88	20.64	20	3/16	130
QXC4803	48	8.1	16	21	20	3/16	130
QXD5001	49.1	6.55	14.61	22.2	10	1/4	120
QXD5002	49.1	6.55	14.61	23.81	10	1/4	120
QXD5003	51.2	8.2	16	24	10	1/4	120
QXD7001	69.85	8.15	16.67	22.2	8	1/4	100



Part No.	D <sub>1</sub>	D <sub>2</sub>	B <sub>1</sub>	B <sub>2</sub>	B <sub>3</sub>	Type	Remark
RBS001	19.0	5.0	6.0	0.5	3.2	5	Polyacetals Outer Ring, Pin Type
RBS002	19.0	M6.0	6.0	0.5	8.0	4	Polyacetals Outer Ring, Screw Type
RBS003	22.0	5.0	7.0	1.0	3.5	1	Pin Type
RBS004	22.0	5.0	7.0	1.0	3.5	5	Polyacetals Outer Ring, Pin Type
RBS005	22.0	M6.0	7.0	1.0	8.0	4	Polyacetals Outer Ring, Screw Type
RBS006	24.0	5.0	7.0	1.0	3.5	5	Polyacetals Outer Ring, Pin Type
RBS007	24.0	M6.0	7.0	1.0	8.0	4	Polyacetals Outer Ring, Screw Type
RBS008	26.0	M8.0	8.0	2.0	12.0	3	629ZZ Bearing inserted, Screw Type
RBS009	26.0	5.0	7.0	1.0	3.5	5	Polyacetals Outer Ring, Pin Type
RBS010	26.0	M6.0	7.0	1.0	8.0	4	Polyacetals Outer Ring, Screw Type
RBS011	30.0	5.9	9.0	1.0	3.7	3	Pin Type
RBS012	30.0	5.0	7.0	1.0	3.5	5	Polyacetals Outer Ring, Pin Type
RBS013	30.0	M6.0	7.0	1.0	8.0	5	Polyacetals Outer Ring, Screw Type
RBS014	35.0	M6.0	12.0	10.5	10.0	6	Round Polyurethane Tire, Screw Type
RBS015	40.0	12.5	12.0	19.0	7.0	2	Pin Type

**GLD® 冲压推力轴承 Pressed Thrust Bearing**

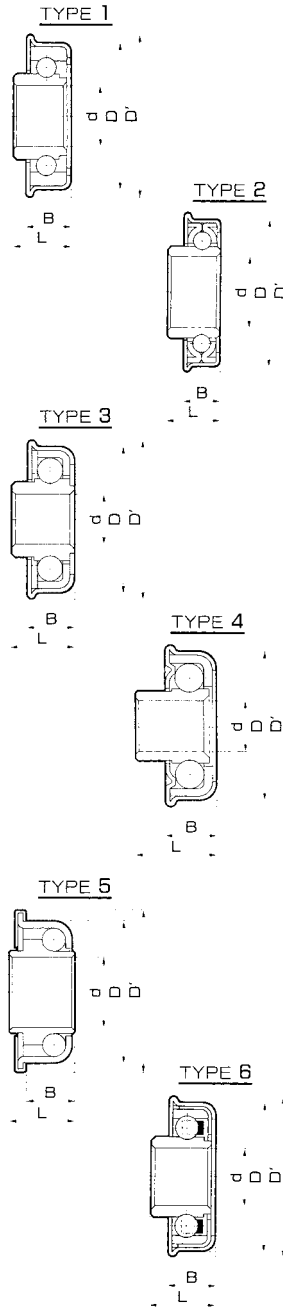


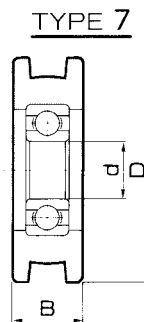
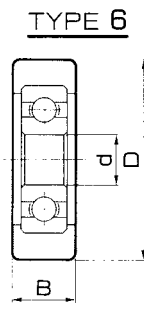
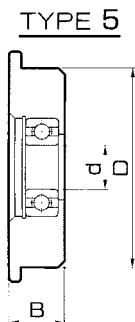
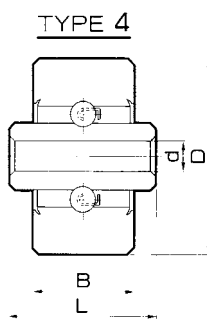
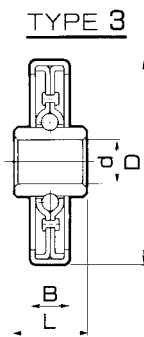
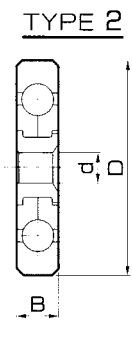
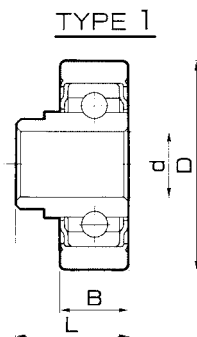
Part No.	D	d	d'	B	Type	Remark
PTB001	12.0	6.2	6.2	4.5	1	Stainless Steel Housing
PTB002	12.5	7.1	7.1	5.1	1	Stainless Steel Housing
PTB003	17.0	8.1	8.1	8.0	3	with Retainer, without Housing
PTB004	17.5	10.2	10.2	6.0	1	
PTB005	19.6	8.0	-	6.0	2	
PTB006	21.4	6.4	7.0	8.3	1	
PTB007	21.8	11.5	12.1	7.1	1	
PTB008	22.0	8.5	8.5	9.0	1	
PTB009	22.0	10.2	10.2	5.8	1	
PTB010	23.0	10.5	10.5	12.0	1	
PTB011	24.8	12.0	12.0	10.0	1	
PTB012	25.0	14.3	14.3	8.5	1	
PTB013	25.4	12.7	13.3	8.7	1	
PTB014	26.0	12.2	12.2	5.3	1	Stainless Steel Housing
PTB015	26.0	12.0	12.0	8.5	1	
PTB016	26.6	9.5	10.2	9.1	1	
PTB017	28.0	15.1	15.1	5.0	1	
PTB018	28.0	16.0	16.0	9.0	1	
PTB019	28.6	15.9	16.7	8.7	1	
PTB020	29.0	12.0	12.0	6.0	1	Stainless Steel Housing
PTB021	36.1	15.9	16.5	11.5	1	
PTB022	36.1	12.7	13.3	11.5	1	
PTB023	36.5	22.5	22.5	7.9	1	
PTB024	36.8	20.0	20.0	11.0	1	
PTB025	40.0	17.0	-	12.0	2	
PTB026	40.0	20.0	20.5	13.8	1	
PTB027	42.1	19.1	19.7	13.9	1	
PTB028	43.0	25.0	25.0	10.0	1	
PTB029	43.0	27.0	27.0	10.0	1	
PTB030	44.5	25.8	26.2	15.9	1	
PTB031	47.0	30.0	30.0	11.0	1	
PTB032	48.0	31.9	31.9	9.5	1	
PTB033	50.0	27.0	27.8	15.9	1	
PTB034	51.2	25.4	26.0	16.3	1	
PTB035	53.2	28.6	29.2	15.9	1	
PTB036	59.5	31.8	32.4	15.9	1	
PTB037	60.0	40.0	41.0	12.0	1	
PTB038	63.9	31.8	32.4	17.9	1	
PTB039	66.7	32.1	35.6	19.5	1	

**GLD® 带法兰冲压轴承 Pressed Radial Bearing with Flange**

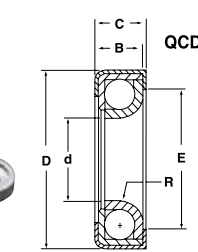
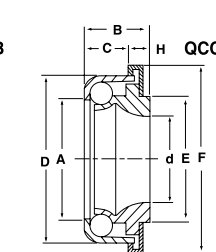
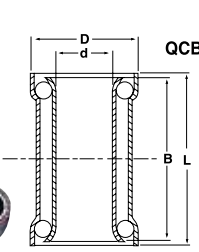


Part No.	D <sub>1</sub>	D'	d'	B	L	Type	Remark
PBF001	20.0	22.0	8.0	7.1	8.5	3	
PBF002	20.0	22.0	8.0	7.1	13.8	3	
PBF003	21.0	23.0	7.2	7.7	11.7	2	
PBF004	21.8	24.0	8.1	6.9	12.0	3	
PBF005	22.9	25.4	8.2	8.5	8.8	3	
PBF006	25.4	28.6	12.0	10.1	11.1	5	
PBF007	25.7	27.0	8.2	10.0	12.5	2	
PBF008	26.9	28.5	12.2	8.0	12.0	3	
PBF009	27.0	30.0	8.0	11.5	18.9	3	
PBF010	27.0	30.0	12.2	8.0	14.5	6	Polyamide Retainer
PBF011	27.3	30.0	12.2	7.3	13.8	3	All Stainelss Steel
PBF012	28.0	30.0	10.2	8.0	12.0	2	
PBF013	28.0	30.5	12.0	8.0	10.0	3	
PBF014	28.7	31.8	12.7	9.6	11.4	3	
PBF015	28.7	31.8	12.7	9.6	11.4	3	Single Seal
PBF016	30.0	33.2	10.2	9.5	11.2	4	
PBF017	30.1	33.2	10.0	9.0	11.0	3	
PBF018	32.1	35.0	12.0	10.0	13.5	3	
PBF019	32.1	35.0	12.0	10.0	15.0	3	
PBF020	31.8	34.1	11.9*	10.5	12.5	3	HEX bore
PBF021	32.0	36.8	12.1	10.0	16.0	6	with Retainer
PBF022	34.0	37.0	12.1	12.0	17.0	1	
PBF023	34.0	37.0	12.1	12.0	17.0	6	Polyamide Retainer
PBF024	34.0	37.0	12.0	11.8	11.8	6	6201ZZ Bearing inserted
PBF025	34.1	37.0	12.2	12.0	17.5	4	
PBF026	34.9	38.1	15.0	9.5	14.0	3	d=9/16",5/8",3/4" available
PBF027	34.9	38.1	15.0	11.9	15.5	3	Double Seals
PBF028	34.9	40.0	15.0	10.5	12.0	5	
PBF029	35.1	38.1	16.0	1103	12.9	3	
PBF030	35.2	38.1	15.9	11.6	13.2	3	
PBF031	35.5	37.0	12.1	10.0	16.5	2	
PBF032	37.0	39.0	17.2	12.0	18.5	4	
PBF033	37.1	39.0	12.0	12.0	16.5	3	
PBF034	37.1	39.0	11.2*	12.0	17.5	3	HEX bore
PBF035	38.1	39.5	10.2	12.0	17.0	2	
PBF036	38.2	40.2	6.6	12.7	19.1	2	
PBF037	40.0	44.5	17.0	13.0	15.0	3	
PBF038	40.2	44.5	17.0	13.0	18.0	3	
PBF039	44.0	46.0	12.1	10.0	16.5	2	
PBF040	47.0	51.8	20.0	13.5	16.5	1	
PBF041	47.0	51.8	20.0	13.5	16.5	3	
PBF042	47.0	51.0	20.0	13.5	16.5	3	Single Seal
PBF043	47.0	51.8	20.0	13.5	16.5	6	with Retainer
PBF044	47.0	52.8	20.0	13.0	16.5	6	with Retainer
PBF045	47.0	51.8	25.8	14.0	17.0	1	
PBF046	47.3	50.8	11.2*	13.5	20.6	2	HEX bore
PBF047	50.8	55.6	25.4	12.7	15.9	2	d=3/4"available
PBF048	50.8	54.0	25.4	12.7	15.9	2	d=3/4" available
PBF049	52.0	55.2	25.0	15.0	18.0	3	
PBF050	57.6	61.8	17.7*	32.5	32.5	6	Polyamide Retainer HEX bore





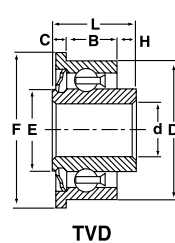
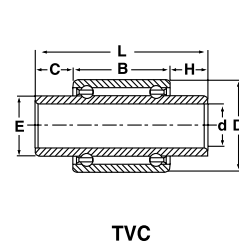
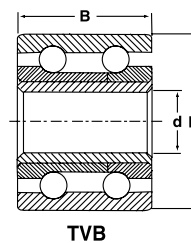
Part No.	D	d	B	L	Type	Remark
BW001	28.0	6.2	6.9	13.1	4	Outer Ring with "R"
BW002	30.0	9.0	10.0	10.0	6	609ZZ Bearing inserted
BW003	35.0	8.0	9.5	18.3	1	
BW004	40.0	10.0	12.0	12.0	6	6200ZZ Bearing inserted
BW005	40.0	10.2	17.0	30.0	4	with Groove 35.0Ø
BW006	41.0	12.7	12.7	21.0	1	
BW007	44.0	8.2	12.4	21.6	2	
BW008	46.5	11.1	11.5	11.5	3	Outer Ring with "R"
BW009	50.0	10.2	16.0	16.0	2	Polyamid lagging, Double Row
BW010	54.0	8.2	8.0	10.0	2	
BW011	55.0	12.2	10.0	14.0	3	
BW012	57.0	8.0	11.0	13.3	2	
BW013	57.0	8.1	9.2	24.5	3	
BW014	58.5	6.4	15.5	34.3	3	
BW015	60.0	15.0	18.0	18.0	7	6202ZZ Bearing inserted, with Groove 50Ø
BW016	70.0	17.0	19.0	19.0	7	6203ZZ Bearing inserted, with Groove 60Ø
BW017	96.0	20.0	25.0	25.0	5	6204ZZ Bearing inserted, with Collar (110Ø)



Bearing No.	Dimension (mm)				Ball	
	D	d	B	L	No.	Dia
QCB2208	22	8		25		
QCB2812	28	12		35		
QCB3015	28	15	28	30	24	

Bearing No.	Dimension (mm)								Ball	
	D	d	A	B	E	F	C	H	No.	Dia
QCC2608	26.1	8		13	17.5	31.3	8.5	4.5	15	5/32
QCC2610	26.1	10		13	17.5	31.3	8.5	4.5	15	5/32
QCC2612A	26.1	12		13	17.5	31.3	8.5	4.5	15	5/32
QCC2612B	26.1	12		12.3	17.5	31.3	8.5	3.8	15	5/32
QCC2712	27.1	12.1	16.7	12.3	18	30.2	8.5	3.8	12	3/16

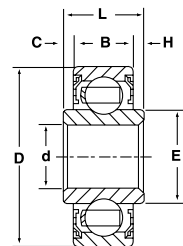
Bearing No.	Dimension (mm)					
	D	d	b	C	E	R
QCD2712	27	12	7.9	9.1	19.1	2.4
QCD3215	32	15	7.9	9.1	23	3.6
QCD3515	35	15	10.7	12.3	26.2	4.8
QCD4020	40	20	11.9	12.7	31.8	3.6



Bearing No.	Dimension (mm)			Bearing No.	Dimension (mm)		
	D	d	B		D	d	b
TVB2206	22	6	11	TVB2206	35	15	16
TVB2408	24	8	13	TVB2408	38	12	19
TVB2710	27	10	14	TVB2710	41	20	16
TVB2912	29	12	14	TVB2912	44	20	24
TVB3310	33	10	13	TVB3310	48	20	22



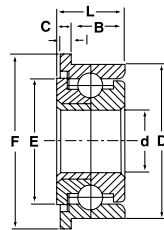
**GLD® 非磨低碳钢轴承 Unground Low Carbon Steel Bearing**



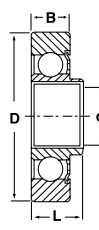
QCE

Bearing No.	Dimension (mm)							Ball	
	D	d	E	B	C	H	L	No.	Dia
QCE01ZZ		7+0.1		7	0.2	5	12.2±0.15	7	5/32
QCE02ZZ		8+0.1	12	7			7±0.05	7	5/32
QCE03ZZ	22+0.02	8+0.1	12	7	0.2	3.5	10.7±0.15	7	5/32
QCE04ZZ	—	8+0.1	12	7	1.0	1.0	9±0.15	7	5/32
QCE05ZZ		8+0.1	12	7	3	5.3	15.3±0.1	7	5/32

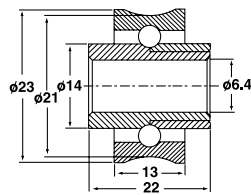
Bearing No.	Dimension (mm)									Ball	
	D	d	E	B	C	H	L	T	R	No.	Dia
TVC3013	30.2	13	17	7.5	47	7.5	62			16	3/1
TVD2308	23.1	8	12		7.2	3.9	11.1	25.4	1.6	7	5/32
TVD2713	26.9	12.7	17.4	12.7	6.4	2.3	21.4	30	1.6	9	5/32
TVD3313A	30.38	12.7	18	7.8	14.27	1.6	15.8	33.2	1.6	8	3/16
TVD3313B	30.38	12.7	18	15.1	14.27	1.6	15.8	33.2	1.6	8	3/16
TVD3211	31.8	11.11	19		5.5	4	9.5	34.9	3	8	3/16
TVE2311	23.1	11.11	17.5		7.2	3.8	11	27	1.6	17	1/8
TVE2713	26.9	12.7	22		6.4	3.8	8.5	30	1.6	20	1/8
TVE3211	31.8	12.7	23		5.5	3.8	9	34.9	3	17	5/32
TVE3216	31.8	12.7	25.4		5.5	3.5	9	34.9	2.5	19	5/32
TVF2506	25	6			7		10			7	5/32
TVF3208	32	6			9		14			7	3/16
TVF3210	32	10			9		19			7	3/16



TVE

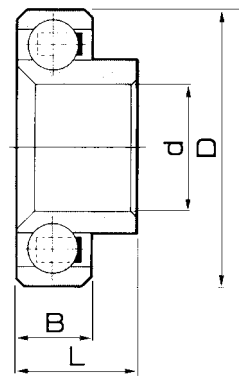


TVF



TVG

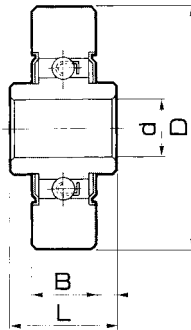
**GLD® 车削轴承 Cutting Radial Bearing**



Part No.	D	d	B	L	Remark
CB001	15.4	6.1	5.0	14.0	
CB002	15.9	5.1	3.4	4.0	
CB003	17.0	6.1	6.0	7.8	
CB004	17.9	6.5	6.5	10.0	Single Shield
CB005	17.9	6.5	6.5	10.0	Single Shield, All Stainless Steel
CB006	19.0	6.1	4.5	5.0	
CB007	19.0	5.0	6.0	6.0	Polyacetals Outer Ring
CB008	22.0	8.0	7.0	7.0	
CB009	22.0	8.0	7.0	7.0	Double Shields
CB010	22.0	6.0	7.0	7.0	Polyacetals Outer Ring, L=8.0 available
CB011	23.0	8.1	7.0	13.0	Single Shield
CB012	23.0	9.0	7.0	7.0	
CB013	24.0	8.2	9.0	18.0	
CB014	24.0	9.3	7.0	12.0	Single Shield
CB015	24.0	6.0	7.0	7.0	Polyacetals Outer Ring, L=8.0 available
CB016	25.8	12.2	6.8	13.9	
CB017	26.0	6.0	7.0	7.0	Polyacetals Outer Ring, L=8.0 available
CB018	28.0	12.1	8.0	14.0	
CB019	30.0	10.0	9.0	9.0	
CB020	30.0	6.0	7.0	7.0	Polyacetals Outer Ring, L=8.0 available
CB021	32.2	12.0	10.0	16.5	
CB022	40.0	15.0	8.0	17.0	
CB023	40.0	15.0*	8.0	19.0	HEX bore
CB024	40.0	17.2	8.0	17.0	
CB025	46.0	20.1	10.0	21.5	
CB026	54.8	17.7*	18.3	32.5	HEX bore

\*shows dimension of the opposite size

**GLD® 车削轮 Cutting Wheel**

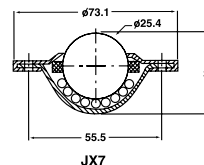
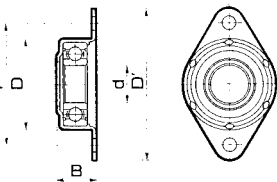


Part No.	D	d	B	L	Remark
CW001	20.0	6.2	18.0	20.0	
CW002	25.0	6.2	9.0	16.	
CW003	36.0	6.5	9.0	14.0	
CW004	36.0	6.3	9.0	25.0	
CW005	36.0	6.5	9.0	28.0	
CW006	36.0	8.2	9.0	14.0	
CW007	40.0	6.0	20.0	25.0	
CW008	50.0	9.6	13.0	20.0	
CW009	50.0	10.3	13.0	20.0	
CW010	50.0	12.2	13.0	20.0	
CW011	50.0	8.3	20.0	25.0	All Stainless Steel

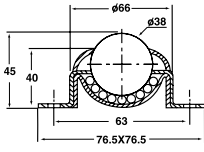
**万向滚珠与塑料部件 Ball Units and Plastic Parts**



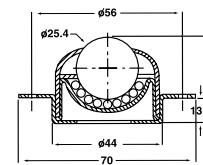
FLANGE UNIT



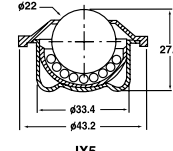
JX7



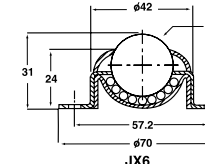
JX1



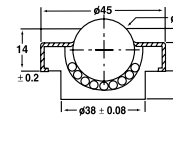
JX2



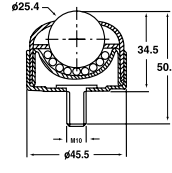
JX5



JX6



JX3



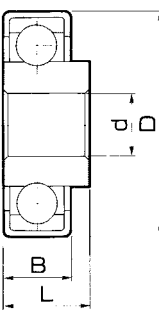
JX4

Part No.	D	D'	d	B	P	L	Remark
Flange Unit A	32.2	62.0	10.0	13.3	48.0	-	6200ZZ Or 1200 Bearing
Flange Unit C	32.2	67.0	17.0	14.3	53.0	-	6003ZZ Bearing

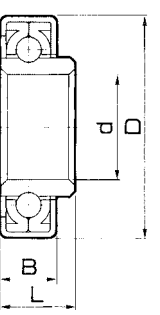
**GLD® 径向冲压轴承 Pressed Radial Bearing**



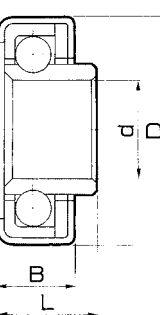
TYPE 1



TYPE 2

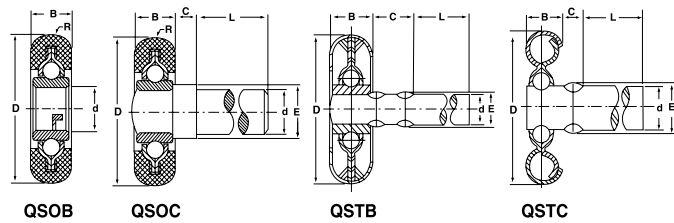


TYPE 3



Part No.	D	d	B	L	Type	Remark
PRB001	16.0	8.15	5.2	10.2	3	
PRB002	17.0	6.2	6.0	8.0	2	
PRB003	20.4	8.0	6.5	9.5	3	
PRB004	22.0	6.1	7.0	19.0	3	
PRB005	22.0	7.1	7.0	19.0	3	
PRB006	22.0	8.1	7.0	12.5	3	
PRB007	22.0	8.0	7.0	7.0	1	
PRB008	22.0	8.0	7.0	7.0	1	Double Shields
PRB009	23.0	9.5	8.0	8.0	3	
PRB010	28.0	12.0	8.0	8.0	2	
PRB011	28.7	12.7	9.6	10.6	3	
PRB012	28.7	12.7	9.6	10.6	3	Single Seal
PRB013	30.0	10.0	9.0	12.0	3	
PRB014	30.0	10.0	9.0	9.0	1	
PRB015	30.0	10.0	9.0	9.0	2	
PRB016	32.0	12.0	10.0	10.0	1	
PRB017	32.0	12.0	10.0	10.0	2	
PRB018	32.0	15.0	9.0	9.0	1	
PRB019	32.0	12.1	7.2	14.0	3	
PRB020	32.0	14.1	7.2	14.0	3	
PRB021	32.0	15.1	7.2	14.0	3	
PRB022	32.0	11.8*	7.2	14.0	3	HEX bore
PRB023	32.0	15.0	9.0	9.0	3	All Stainless Steel
PRB024	35.0	12.2	10.0	15.0	1	
PRB025	35.0	15.0	11.0	11.0	1	
PRB026	35.0	15.0	11.0	11.0	2	
PRB027	40.0	17.0	12.0	12.0	1	
PRB028	40.0	17.0	12.5	12.5	1	Double Seals
PRB029	40.0	17.0	12.0	12.0	2	
PRB030	42.0	20.0	12.0	12.0	1	
PRB031	47.0	20.0	14.0	14.0	1	
PRB032	47.0	20.0	14.0	14.0	2	
PRB033	50.8	25.4	12.7	15.9	2	
PRB034	52.0	25.0	15.0	15.0	2	





Bearing No.	Dimension (mm)							Ball	
	D	d	E	B	C	L	R	No.	Dia
QSOB4601	46	11.2		12.5			6.25	10	1/4
QSOB4701	47.5	11.2		12.5			6.25	10	1/4
QSOB4801	48.5	11.2		12.5			6.25	10	1/4
QSOC4601	46	11.0	15.0	12.5	17.3	85.0	6.25		
QSOC4602	46	11.0	14.0	12.5	14.0	96.0	6.25		
QSOC4603	46	11.0	14.0	12.5	14.0	71.0	6.25		
QSOC4604	46	12.0	14.2	12.5	19.8	86.58	6.25		
QSOC4605	46	12.0	14.2	12.5	19.8	162.5	6.25		
QSOC4606	46	9.4	12.7	12.5	103.7	4.7	6.25		
QSOC4607	46	11.0	15.0	12.5	17.3	165.2	6.25		
QSOC4608	46	12.7	16.0	12.5	13.5	99.0	6.25		
QSOC4609	46	11.0	14.2	12.5	18.8	99.0	6.25		
QSOC4610	46	11.0	14.2	12.5	5.5	76.0	6.25		
QSOC4611	46	11.0	14.2	12.5	12.5	20.75	6.25		
QSOC4612	46	11.0	14.2	12.5	12.5	225.0	6.25		
QSOC4613	46	11.0	14.2	12.5	12.5	94.0	6.25		
QSOC4614	46	11.0	15.0	12.5	17.3	165.2	6.25		
QSOC4615	46	11.0	15.0	12.5	17.3	85.0	6.25		
QSOC4616	46	11.0	14.0	12.5	6.0	82.0	6.25		
QSOC4617	46	11.0	14.2	12.5	12.5	94.0	6.25		

Bearing No.	Dimension (mm)							Ball	
	D	d	E	B	C	L		No.	Dia
QSTB4601	46	11.0	13.6	12.0	13.5	88.5		10	1/4
QSTB4602	46	11.0	13.6	12.0	13.5	152.0		10	1/4
QSTB4603	46	11.0	13.6	12.0	13.5	215.1		10	1/4
QSTB4604	46	11.0	13.6	12.0	21.5	80.5		10	1/4
QSTB7701	71	11.0	13.6	18.6	15.8	85.6		10	1/4
QSTB7702	71	11.0	13.6	18.6	15.8	85.6		10	1/4
QSTB7703	71	11.0	13.6	18.6	15.8	85.6		10	1/4
QSTC4601	46	11.0	13.6	11.4	15.8	85.6		10	1/4
QSTC4602	46	11.0	13.6	11.4	15.3	167.3		10	1/4







**慈溪市金星轴承有限公司**  
Cixi Golden Star Bearing Co., Ltd.

**办公室:**

慈溪市北三环东路1988号恒元广场A座2002室

**Office Add:**

Hengyuan Plaza, Building A, No.1988, Beisanhuan East Road Cixi,  
Zhejiang Province, China

**工厂、仓库 & 检测中心:**

宁波市杭州湾新区滨海二路191号恒元工业区C3

**Factory、Warehouse & QC Center:**

Building C3, Hengyuan industrial zone, No.191 Binhai 2nd Road,  
Hangzhou Bay New Zone, Cixi Ningbo, China

Tel: +86-574-63886528

Fax: +86-574-63886398 63886465

E-mail: [info@gld-bearing.com](mailto:info@gld-bearing.com)

<http://www.gld-bearings.com>

Distributors