



INSIGHT



## COMPANY

We are a midsize, metal-working company located in Vaihingen/Enz (near Stuttgart, Germany) with 120 employees and an annual turnover of about 18 million €. Our array of services ranges from stamping tools to intricate progressive/compound die stamping tools with part and conveyor feed systems, up to complex forming tools.

For more than 80 years Kölle GmbH has been active as a midsize, owner-operated family business in the toolmaking and metal stamping sector. We manufacture high quality tools and series stamping parts for our customers from the automotive, the aerospace industry as well as the electrical engineering branch. We have many years experience and technical know-how particularly in the product ranges of seal support frames, metal parts for heat shield insulations and tubular rotors for pumps.

## QUALITY-/ ENVIRONMENT

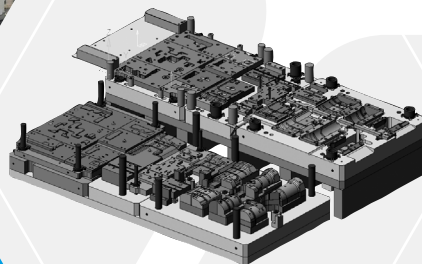
Our numerous measurement data bring the system to a full circle, like for example by the use of a 3D measuring machine. Furthermore, within the terms of our sustainable corporate culture, environmental awareness is firmly integrated into our Management System.

Since 2007, our Environmental Management System is validated according to the Eco-Management and Audit Scheme (EMAS), which also includes the environmental standard DIN EN ISO 14001. Since 2013 we are compliant with the requirements pertaining to an energy management system according to with DIN EN ISO 50001

## TOOL MAKING

Toolmaking forms the base and origin of our company. The solutions developed by our engineering department are materialised into highly efficient stamping dies and forming tools, manufactured on latest machining technology combined with the long-standing experience of our staff. We optimise the components for the production in close cooperation with our customers. This is how we aim to achieve an optimum result in regard to costs and quality.

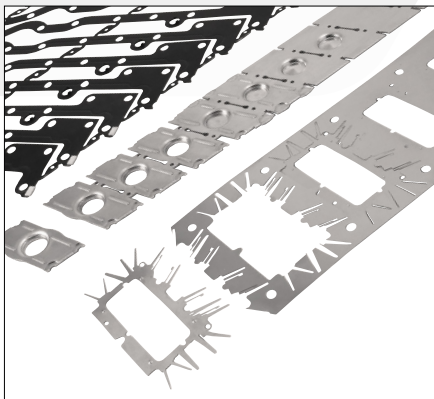
Very efficient and state-of-the-art machinery is available in our milling and eroding division in order to find a qualitative premium and economic solution for you. Our array of services ranges from stamping tools to intricate progressive/composite die stamping up to complex forming tools.



MADE  
IN  
GERMANY

## STAMPING SHOP

Some of our highly qualified staff members can be found in our stamping department. Here, they produce a variety of advanced stamped, drawn, and bent components made from common materials, e.g., aluminium, steel, and stainless steel, attaining the highest possible degree of quality. Our large in-house machinery consists of 10 stamping lines with a contact pressure from 400 to 3150 kN. We also employ 7 additional mechanical and 12 hydraulic insertion presses that allow us to complete (almost) any challenge handed to us. We use state-of-the-art process monitoring systems on several stamping lines in order to detect process malfunctions well in advance.



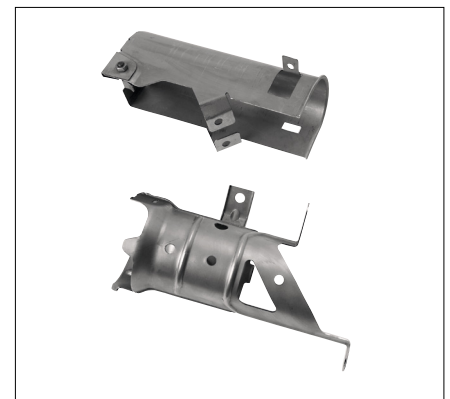
STAMPING PARTS

## ENGINEERING

Our in-house engineering department provides the foundation for high quality stamping, cutting or forming tools. We have the expertise when it comes to the design of progressive/compound die stamping tools for seal support frames and the design of forming and cutting tools for metal parts in heat shields. We will be happy to assist you in the development of your components. All common 3D CAD formats can be processed.



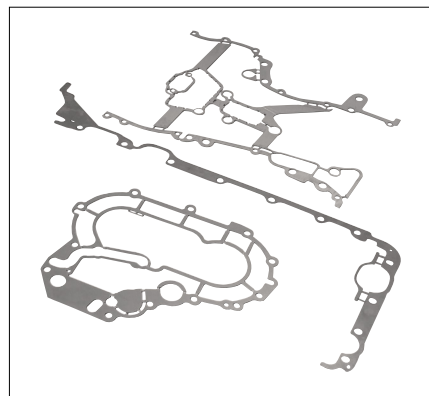
METAL PARTS FOR HEAT SHIELDS



STAMPING – BENDING – ASSEMBLING




METAL PARTS FOR HEAT SHIELDS



STAMPING PARTS



TUBULAR ROTORS



Kölle GmbH  
Werkzeugbau und Stanzerei  
Erich-Blum-Str. 30  
71665 Vaihingen/Enz-Enzweihingen  
Germany  
Phone +49-7042/9448-0  
Fax +49-7042/9448-15  
E-mail: [info@koelle-gmbh.de](mailto:info@koelle-gmbh.de)