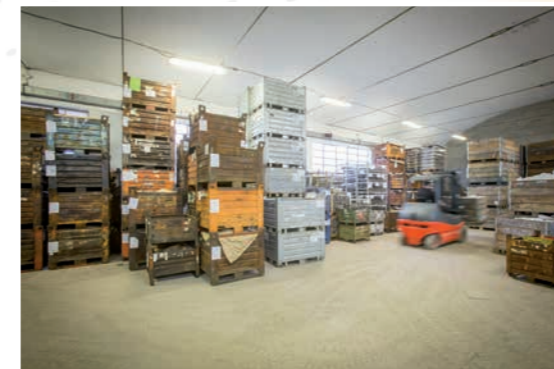
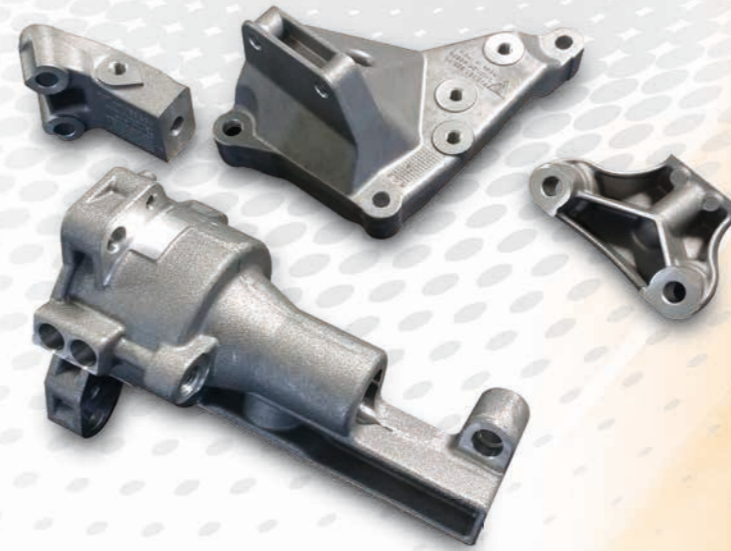




Precision machining from 1965

Born in the mid-60 **NF** operates in the field of precision machining contractors. Already at that time the small sole owner with a lathe and a milling machine used in a poky dwelling set in enclosed itself the passion of owner Nepote Fus Giocondo towards mechanics and as the years passed and the contribution of the workforce of the sons Fabrizio and Gianluca the company has experienced a major expansion in its rapid path in terms of equipmet, technological know-how and processing, from artisan workshop of the early years to the solid and dynamic reality.



The **NF** is an ideal partner for those companies that for their own reasons wish to give outside their working or need to be continually replenished the necessary components for the assembly of its products.

Whatever its field of action, the success of a company is based on the results achieved and, above all, the ability to fully meet the demands of a constantly evolving market. The ability to provide quality products at the right price is the minimum prerequisite to enable the presence on the market today. Are part of the added value also reaction speed, increasing flexibility and ability to continually develop new ideas based on a minimum input of the customer. The **NF**, maintaining unchanged those features can work all ferrous and non-ferrous metals (steel, cast iron, aluminum related and non copper, bronze, brass and various kinds of plastic materials) with production volumes ranging from a few dozen a month up to hundreds of part per day with weights ranging from a few grams to a few hundred of kilos.

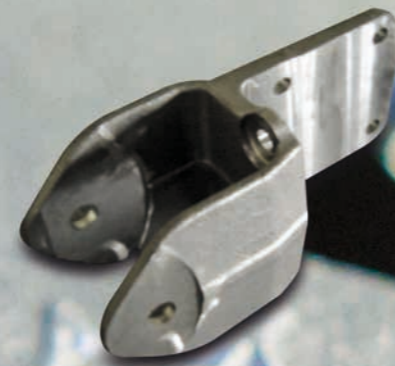


The design of the **NF** was created by following step-by-step the increasingly new technologies that have shaped the field of machining. Year after year the fleet has constantly expanded and modernized and it keeps going to continue this philosophy, you may demonstrate the large slices of annual budget dedicated to continuous investment policy rewarded by the constant trust given to **NF** by its customers. The workshop has 3 vertical machining center and 10 palletized horizontal machining center CNC Hitachi-Seiki and Kitamura of the most technological and equipped currently on the market. Spindles iso 40 cones- iso 50 from 3 to 4 axis continuous head D'Andrea and Renishaw probing with working fields.

Of wide range up to maximum workpiece weight dimensions 1100x1100x1000, 1200 Kg piece and ran 1050x900x850.

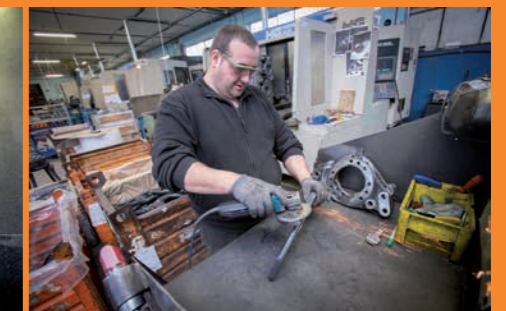
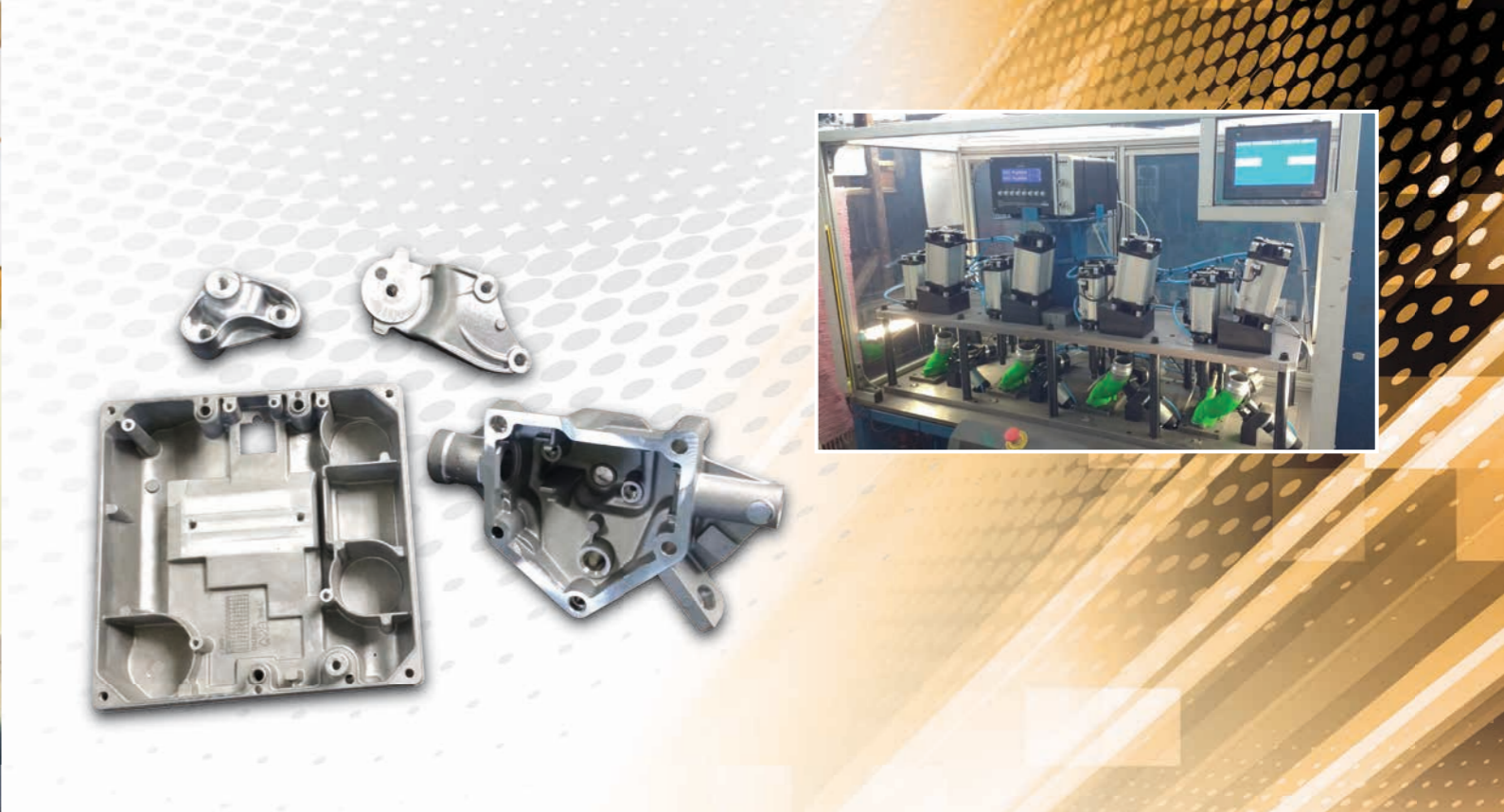
It also has 24000 RPM spindles for machining.

Working time spans over three shifts from Monday to Saturday morning.



With the **NF** collaborate qualified suppliers able to perform particular turning up to a diameter of 670 for a length of 1800, perform adjustments, gears, welds and performing any painting or heat treatment. Besides the wide range of companies in the area makes it possible to provide the customer with complete detail from the supply of raw materials obtainable from bar, from printed or casted.

The **NF** also draws on its structure for the study design and manufacture of processing equipment for reducing to a minimum the route to search "always" for the best economic-productive solution.



Alongside traditional control instruments such as calipers, gauge blocks, micrometers, dial bore gauges, roughness, diabase and what is used on the machine, the **NF** is one of the modern three-dimensional testing manufacturer Mistral model motorized Exagon-Dea by using Tutor software Caps. The metrology room operates in a closed environment and air-conditioned placed in area offices and staff are kept constantly updated, so that they operate precisely and efficiently. The philosophy of **NF** is to provide the customer with a quality product, complete with all necessary documentation at all stages of processing and testing on time and with competitive costs.

We obtained certification system ISO9001.





www.nepotefus.com



ASACERT
ISO 9001:2008
QUALITY MANAGEMENT SYSTEM

NEPOTE FUS GIOCONDO & C. snc

Via San Rocco, 77 • 10070 Villanova Can.Se (TO) • Tel. +39 011.9298713 • Fax +39 011.9298412

info@nepotefus.com