



QT Hydraulic (Shanghai) Stock Co., Ltd.

Address: No.1689, SiYi Road, JiaDing district, Shanghai, China

Direct: +86 021 59102026, +86 021 69151392

Fax: +86 021 39904480

Email: newsolution@vip.126.com, qtfluid@qtfluid.cn

Website: www.qtfluid.com



**上海强田液压股份有限公司**  
QT Hydraulic (Shanghai) Stock Co., Ltd.

追求卓越 永可信赖



# Company Profile

QT Group was born in 2001.

It has now grown into a group company with 7 major businesses.

- ▲ **Casting.** We have a foundry to produce casting.
- ▲ **Hydraulic Valve.** We do manufacture for hydraulic valves.
- ▲ **Hydraulic power station.**
- ▲ **Sensors.** Kinds of sensors can be manufactured by us.
- ▲ **Intelligent control.**
- ▲ **Maintenance.**
- ▲ **Import and Export**

Our excellent talent team, advanced process equipment and perfect quality control system, provide customers good products and service. We supply a complete set of electro-hydraulic systems and service to metallurgical, oil equipment, mining, municipal, engineering machinery, etc. QTfluid is always searching for a good partner to distribute QTfluid Hydraulic products, and we will feel so honored if we shall be one of your partner in Chinese Market.

Come on in and join QTfluid.

敬畏规则 用户思维  
求实创新 勇于担当

追求卓越 永可信赖



Looking to the future,  
we will keep growing by meeting  
the various challenges in our paths.



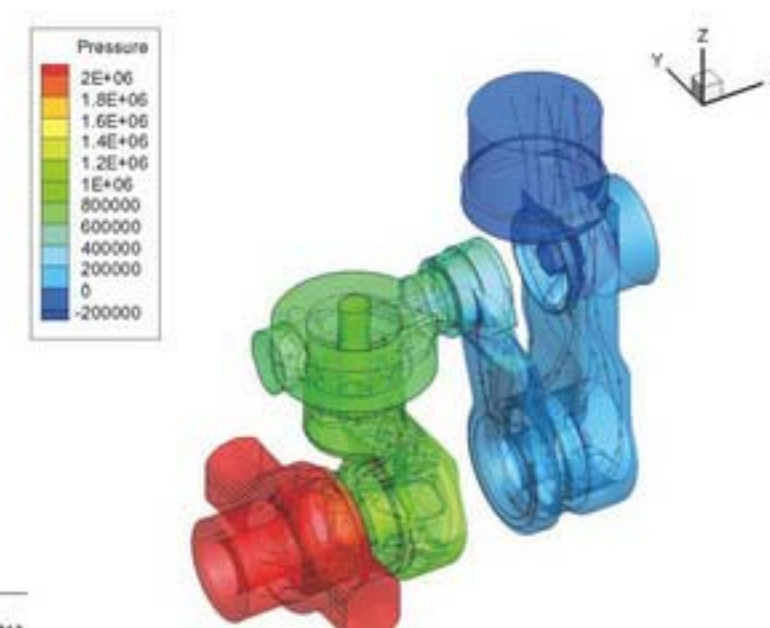
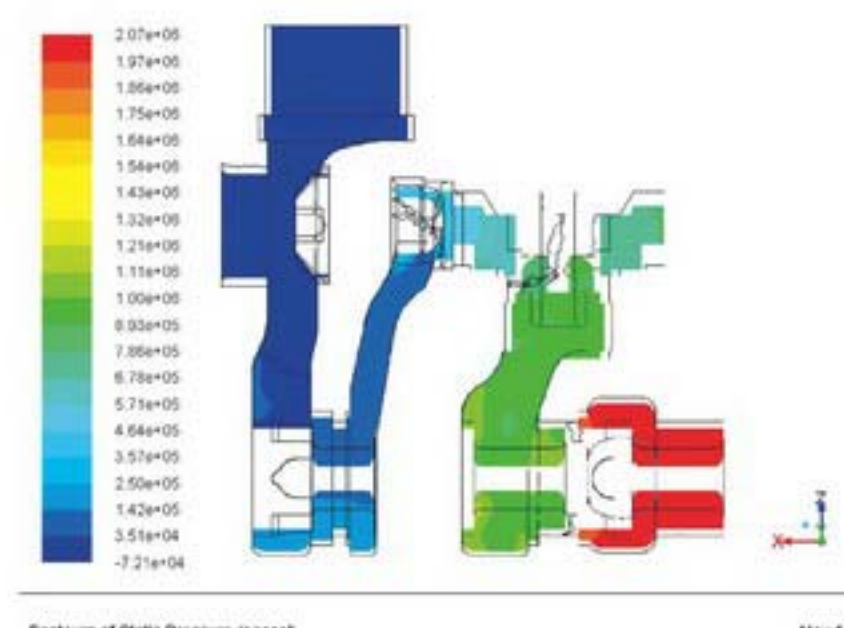
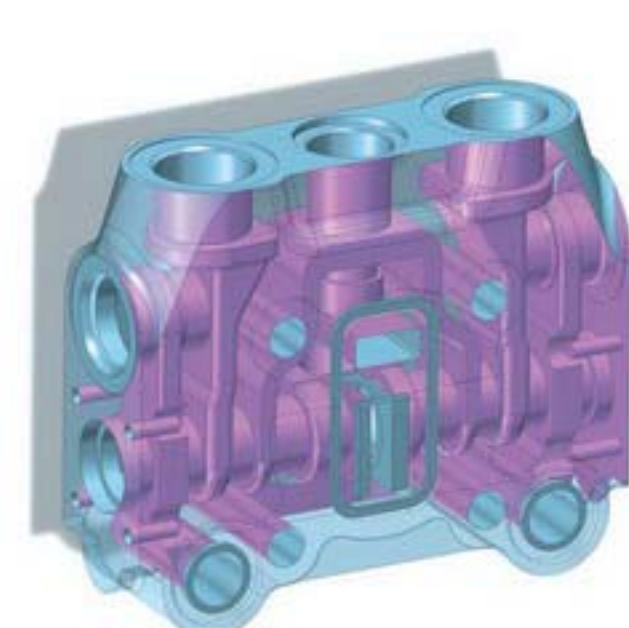
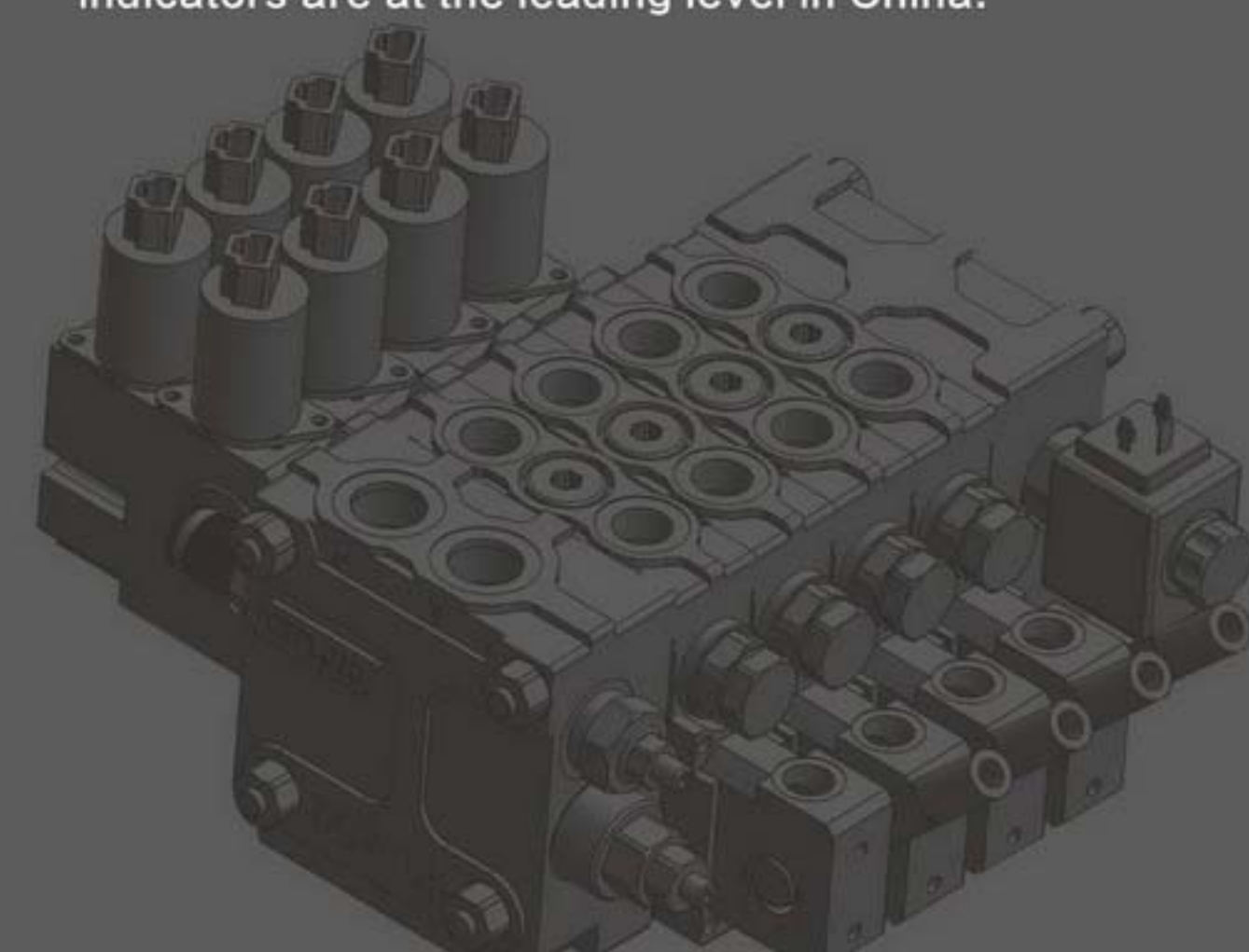
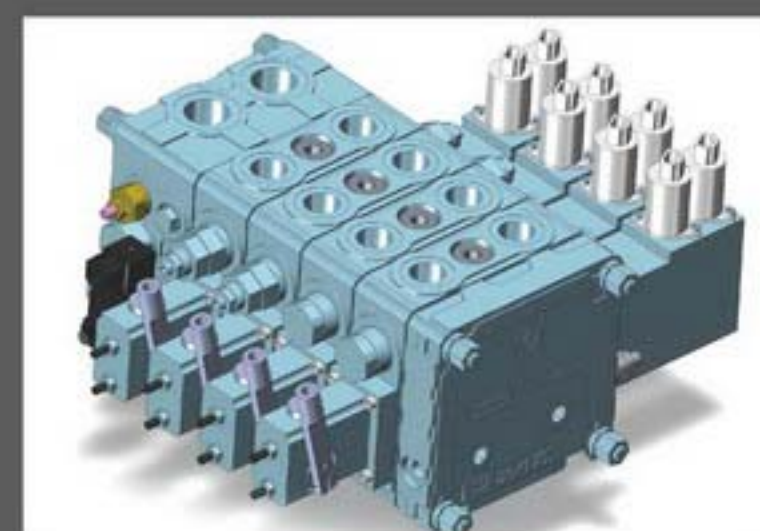


追求卓越 永可信赖

# Design & Manufacturing

QTfluid has the leading technical level, first-class production equipment, perfect production process, skilled operation staff and continuous improvement of quality management system.

By continuously increasing R&D investment, We have our own core technology and R&D achievement. It has successively obtained more than 30 national patents, and its main indicators are at the leading level in China.





## Quality Control



## We defined high quality valve like this

- ▲ Casting: with a number of casting patents of senior engineers, carefully deployment of materials, after 30 procedures of casting.
- ▲ Spool: designed by simulation software in accordance with the actual condition or standard condition, through three precision grinding processing.
- ▲ Valve body: precision CNC processing, through 500BAR pressure to clean of the inner cavity, chemical cleaning burrs, and then cleaning by ultrasonic cleaning and spool assembly.
- ▲ Assembly: Scientific and rational production line
- ▲ Test: air tightness test is OK before the bench test is qualified

QTFluid has been paying attention to product quality control and paying attention to every detail. From the early stage of product design, the introduction of product reliability design and reliability test work before commissioning. After batch production, strict implementation of product process and ISO 9001 quality certification system to ensure product cleanliness to reach NAS8 level, while the company's overall internal failure to reach 4\_level.





# Product Line

## Monoblock directional control valves



DCV20 monoblock valve  
 Rated flow: 20L/min  
 Max flow: 35L/min  
 Max pressure: 35Mpa  
 Control type: manual control,  
 pneumatic control,hydraulic  
 control,electrohydraulic control,ect.



DCV40 monoblock valve  
 Rated flow: 40L/min  
 Max flow: 60L/min  
 Max pressure: 35Mpa  
 Control type: manual control,  
 pneumatic control,hydraulic  
 control,electrohydraulic control,ect.



DCV110 monoblock valve  
 Rated flow: 110L/min  
 Max flow: 125L/min  
 Max pressure: 31.5Mpa  
 Control type: manual control,  
 pneumatic control,hydraulic  
 control,electrohydraulic control,ect.

## Sectional directional control valves



DCV150A Sectional valve  
 Rated flow: 120L/min  
 Max flow: 150L/min  
 Max pressure: 31.5Mpa  
 Control type: manual control,  
 pneumatic control,hydraulic  
 control,electrohydraulic control,ect.



DCV160 Sectional valve  
 Rated flow: 120L/min  
 Max flow: 160L/min  
 Max pressure: 31.5Mpa  
 Control type: manual control,  
 pneumatic control,hydraulic  
 control,electrohydraulic control,ect.



DCV200 Sectional valve  
 Rated flow: 160L/min  
 Max flow: 200L/min  
 Max pressure: 31.5Mpa  
 Control type: manual control,  
 pneumatic control,hydraulic  
 control,electrohydraulic control,ect.

## Sectional directional control valves



DCV60A Sectional valve  
 Rated flow: 50L/min  
 Max flow: 60L/min  
 Max pressure: 31.5Mpa  
 Control type: manual control,  
 pneumatic control,hydraulic  
 control,electrohydraulic control,ect.



DCV95 Proportional valve  
 Rated flow: 5L/min  
 Max flow: 100L/min  
 Max pressure: 31.5Mpa  
 Control type: electro-  
 proportional control



DCV100 Sectional valve  
 Rated flow: 80L/min  
 Max flow: 100L/min  
 Max pressure: 31.5Mpa  
 Control type: manual control,  
 pneumatic control,hydraulic  
 control,electrohydraulic control,ect.

## Hydraulic remote joystick



Hydraulic remote joystick  
 Max flow: 20L/min  
 Working pressure: 5Mpa



Hydraulic remote joystick  
 Max flow: 20L/min  
 Working pressure: 5Mpa  
 Power switch: DC30V\*6A

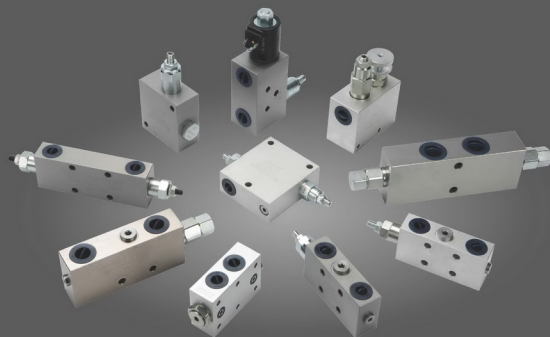


Hydraulic remote joystick  
 Max pressure: 1Mpa



## Customized Valve

Develop personalized solutions based on industry characteristics.  
 Meet your individual needs and find solution to meet market demands.



## Hydraulic Power Station



Stainless steel hydraulic  
lifting system



Aluminum industry  
hydraulic system



Automotive wheel test  
hydraulic system



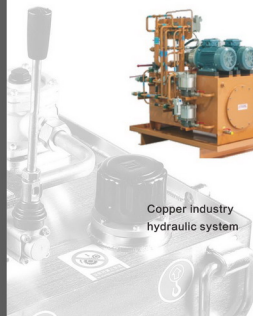
Copper industry  
hydraulic system



Mobile garbage  
compression station



Metallurgical industry  
hydraulic system







## Fixed Displacement Pump

### HPTP 012-108 DIN Series

HPTP 012-108 DIN is a fixed displacement bent-axis pumps for mobile hydraulic applications.

HPTP 012-0108 DIN pumps displacement range 12-108 cm/rev. Maximum operating pressure is 400 bar. This pump meets the market's high demands due to its high flow performance, pressure efficiency and simplest of installation.

#### Advantages:

- ▲ Low noise levels at high maximum speed due to its quality production and design
- ▲ The operation over the entire speed range is smooth.
- ▲ Long usage life due to its high demands on material selection such as seals, bearings, ect.
- ▲ To avoid leakage from the pump and PTO, there are O-rings on all contact surfaces and double shaft seals for high pressure.
- ▲ All pumps are test under extreme testing environment before delivery to custom.
- ▲ Easy to change the rotation of pump flow.

### HPTP 012-130 ISO Series

HPTP 012-0130 ISO standard range of displacement from 12-130 cm/rev. Maximum operating pressure up to 400 bar. The pump well design and dimensioned, double tapered roller bearings permit high shaft loads and performance characteristics. This pump is drained externally. We supply five different shaft types.

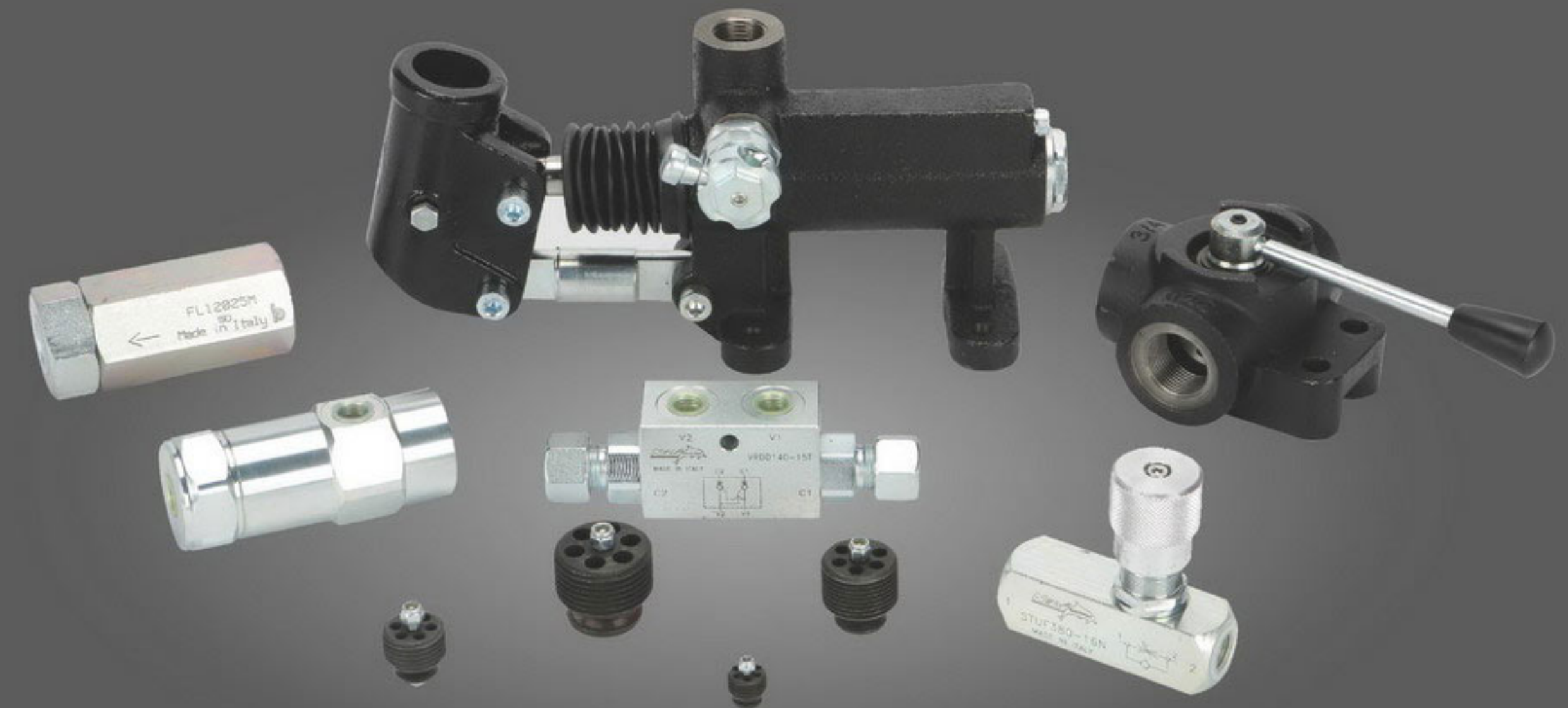
#### Advantages:

- ▲ Low noise levels at high maximum speed due to its quality production and design.
- ▲ The operation over the entire speed range is smooth.
- ▲ Long usage life due to its high demands on material selection such as seals, bearings, ect



## Hydraulic Accessory

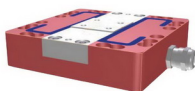
We can supply several kinds of hydraulic accessory to meet your needs.





## Multi-component Sensor

Multi-component force sensor is also called multi-dimensional force and torque sensor. It can be used to test the force and torque in three directions of X, Y and Z in three-dimensional space. Compared with other conventional sensors, multi-component force sensor has coupling effect in many directions. Therefore, it is difficult to design, process and manufacture. After years of accumulation and practice, our company has developed six-component transmission with leading performance in China. Sensors are widely used in aerospace, manipulator, automobile and other fields.



## Torque Sensor

### SC-DT1

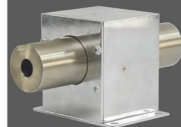
Measuring range: 0~500Nm

Accuracy: 0.1%FS~1%FS

Sensitivity: 1~2.0 mV/V

Revolutions: ≤5000 (r/min)

Application: Output torque test for various types of engine, torque test for hydraulic steering, etc.



### SC-DT2

Measuring range: 0~10000Nm

Accuracy: 0.1%FS~0.5%FS

Type of output: Frequency signal

Revolutions: ≤10000 (r/min)

Application: Output torque test for various types of engine, torque test for hydraulic steering, etc.

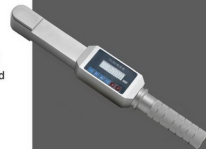


### SC-TW

Measuring range: 0~1000Nm

Accuracy: 1%FS

Application: It is used in industrial applications where handheld torque testing is required.







## Torque Sensor



**SC-T1**

Measuring range: 0~100Nm  
Accuracy: 0.1%FS~0.5%FS  
Sensitivity: 1~2.0 mV/V



**SC-T2**

Measuring range: 0~1000Nm  
Accuracy: 0.1%FS~0.5%FS  
Sensitivity: 1~2.0 mV/V



**SC-T3**

Measuring range: 0~5000Nm  
Accuracy: 0.1%FS~0.5%FS  
Sensitivity: 1~2.0 mV/V

Application: Used in the industrial site requires static torque measurement, it is mainly used in applications where the forward and reverse rotation angles are less than 180°. Mainly for the steering wheel torque test of the car, the output shaft torque test.



**SC-T4**

Measuring range: 0~5000Nm  
Accuracy: 0.1%FS~0.5%FS  
Sensitivity: 1~2.0 mV/V

## Force/Weighing Sensor

**SC-F1**

Column Load Sensor



Measuring range: 0~50t  
Accuracy: 0.05%FS~0.1%FS  
Sensitivity: 1~2.0 mV/V

Application: Used in various types of truck scales, railway scales, other test and control areas.

**SC-F2**

S-Shaped Load Cell Sensor



Measuring range: 0~5t  
Accuracy: 0.02%FS~0.1%FS  
Sensitivity: 1.5~2.0 mV/V

Application: Various weighing systems, hopper scales, industrial automation field control, etc.

**SC-F3**

Lower Load Range Load Sensor



Measuring range: 0~100Kg  
Accuracy: 0.02%FS~0.1%FS  
Sensitivity: 1.5~2.0 mV/V

Application: Small-scale weighing, mobile phone test, mainly including mobile phone side button test, screen test, USB port plug force test.

**SC-F4**

Donut-Shaped Load Sensor



Measuring range: 0~400t  
Accuracy: 0.02%FS~0.1%FS  
Sensitivity: 1.5~2.0 mV/V

Application: Weighing test, high-speed rail industry weighing test, hydraulic testing industry, etc.

**SC-F5**

Cantilever Beam Load Sensor



Measuring range: 0~10t  
Accuracy: 0.02%FS~0.1%FS  
Sensitivity: 1.5~2.0 mV/V

Application: Weighing test industry, truck scale, hopper scale, tank scale, barrel scale, storage scale, reactor weighing system, garbage truck weighing, etc.

**SC-F6**

Bridge Load Cell Sensor



Measuring range: 0~20t  
Accuracy: 0.02%FS~0.5%FS  
Sensitivity: 1~2.0 mV/V

Application: Tension force measurement, railway scale, truck scale, etc.



# Pressure sensor

# Strain gage

## SC-P101

Pressure sensor



Measuring range: 0~200MPa  
Accuracy:  $\pm 0.2\%$ ;  $\pm 0.5\%$  FS  
Sensitivity: 0.6~1.5 mV/V  
Use Temp Range:  $-10\sim+60\text{ }^{\circ}\text{C}$   
Excitation: 5~12 V DC

## SC-P102

Pressure sensor



Measuring range: 0~200MPa  
Accuracy:  $\pm 0.2\%$ ;  $\pm 0.5\%$  FS  
Sensitivity: 0.6~1.5 mV/V  
Use Temp Range:  $-10\sim+60\text{ }^{\circ}\text{C}$   
Excitation: 5~12 V DC

## SC-P203

Pressure sensor



Measuring range: 0~150MPa  
Accuracy:  $\pm 0.1$ ;  $\pm 0.2$ ;  $\pm 0.5\%$  FS  
Use Temp Range:  $-40\sim+125\text{ }^{\circ}\text{C}$   
Excitation: 12, 15, 24V DC  
Time Effect:  $\pm 0.2\%$  FS/Year

## SC-P601

Melt Pressure sensor/transducer



Measuring range: 0~150MPa  
Accuracy: 0.2%FS~1.5%FS  
Output Signal: 2mV/V, 3.3mV/V  
Excitation: 10(6~12)V DC

## SC-P701

Silicon piezoresistive/ceramic piezoelectric forec transducer



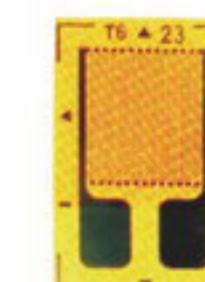
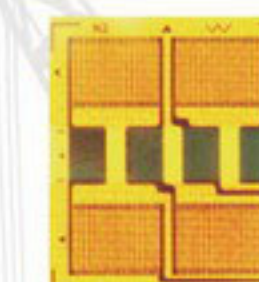
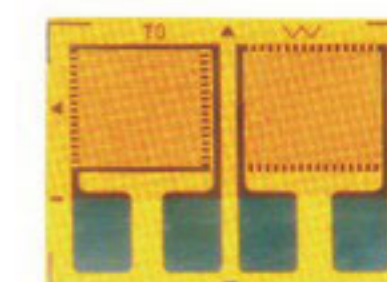
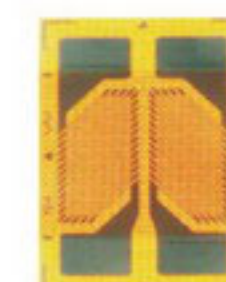
Measuring range: 0~1.60MPa  
Accuracy: 0.2%FS~1.0%FS  
Use Temp Range  $-10\sim 80\text{ }^{\circ}\text{C}$   
Output Signal: 4~10V  
Excitation: 10~36V DC

## SC-P801

Micro-pressure Pressure Transducer



Measuring range:  $-100\sim 1\text{MPa}$   
Accuracy: 0.5%FS, 1.0%FS  
Use Temp Range  $-10\sim 80\text{ }^{\circ}\text{C}$   
Excitation: 24V DC



# Matching Instruments



Transducer

Working voltage: 12V DC 24V DC  
Output signal: 4~20mA, 0~5V,  $\pm 5\text{V}$ , 0~10V  
Accuracy:  $>0.1\%$  FS  
Working temperature range:  $-20\text{ }^{\circ}\text{C}\sim 85\text{ }^{\circ}\text{C}$



Junction Box

Working voltage: 12V DC 24V DC  
Output signal: 4~20mA, 0~5V,  $\pm 5\text{V}$ , 0~10V  
Accuracy:  $>0.1\%$  FS  
Working temperature range:  $-20\text{ }^{\circ}\text{C}\sim 85\text{ }^{\circ}\text{C}$   
Protection level: IP67



Intelligent digital display control instrument

Supply voltage: 220V AC  $\pm 10\%$ /50Hz  
Consumption: 10W  
Display mode: -9999~19999  
Display accuracy: 0.2%FS  
Input signal: mV, 0~10mA, 4~20mA, 0~5V