

# CAMSER Subcontracting Division

## A network serving as ONE-STOP SHOP





## CAMSER AT A GLANCE

Year  
Founded

1981

Turnover

€ 23,065,000

Export

8%

Employees

171

Production  
Area

18,000 sqm

Foreign  
Markets

12

## OUR CORE BUSINESSES

### Sheet Metal Forming

Shearing

Deep Drawing

Laser Cutting

Bending

Welding

Structural Steelwork

### Mechanical Machining

Turning

Milling

Drilling

### Production of Electric Windings

Custom Electric Windings

Standard Electric Windings

Product Engineering Consultancy

### Mould Design and Injection Moulding

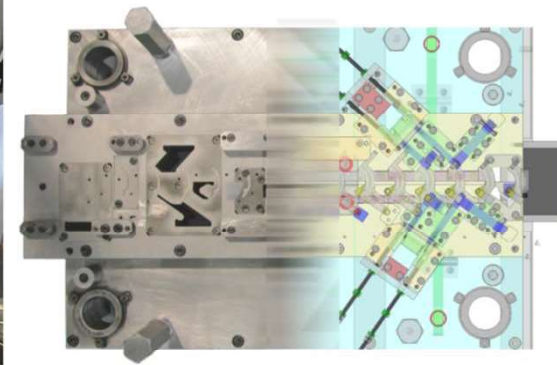
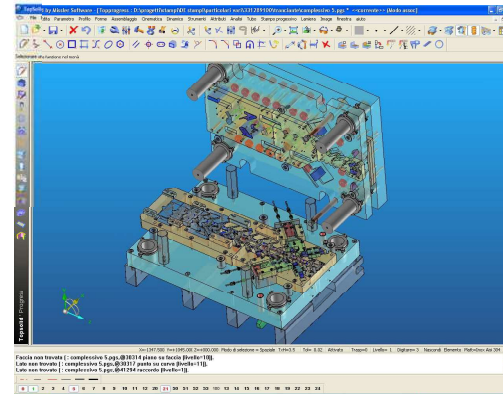
Mould Design and Manufacture

Injection-moulded Parts

# SHEET METAL FORMING

## STAMPING

Die design, manufacturing and maintenance



## SHEARING AND DEEP DRAWING

Materials:  
aluminium, brass/copper, stainless steel, carbon steel, iron and others





# SHEET METAL FORMING

LASER CUTTING

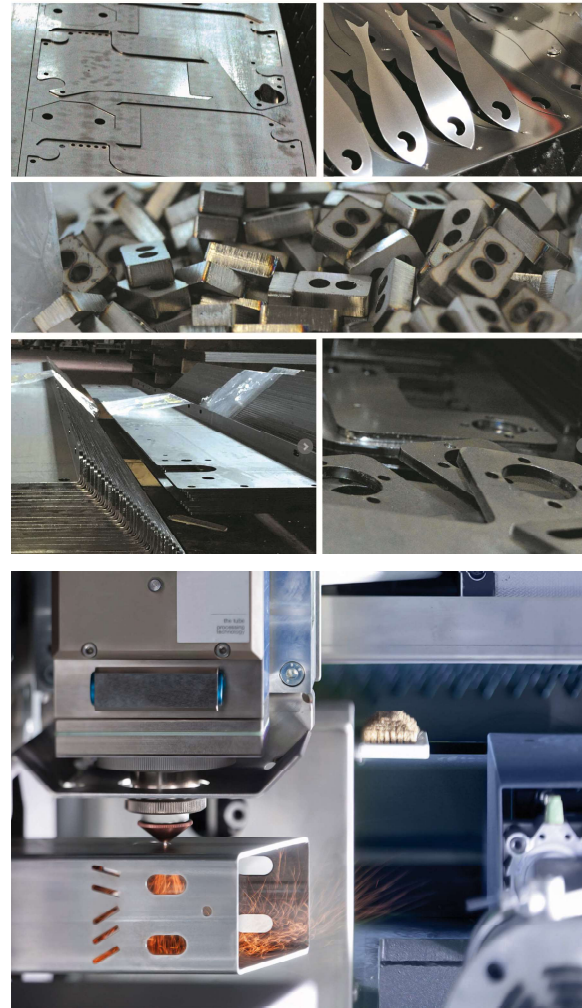
BENDING

WELDING

STRUCTURAL STEELWORK

Max. dimensions: **6000x2000mm**

Materials: carbon steel, steel,  
stainless steel, C70 steel, iron,  
aluminium



# MECHANICAL MACHINING

## MILLING AND TURNING

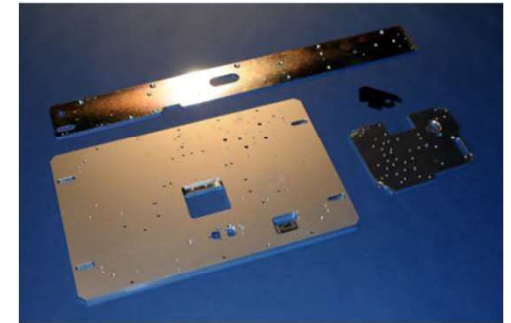
### SMALL COMPONENTS

**Materials:** aluminium and its alloys, every kind of steel, titanium, copper, brass and plastics.

**Dimensions:**

**Milling:** min. 1 mm x 1 mm, max.  
10.000 mm x 2.500 mm x 1.250 mm

**Turning:** min.  $\varnothing 3$  mm, max.  $\varnothing 300$   
mm L= 600 mm

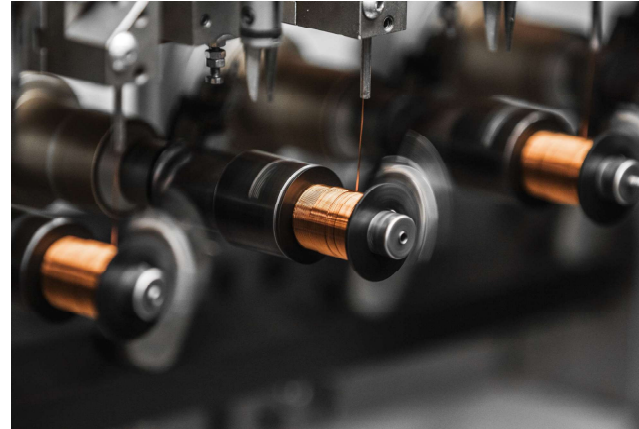


# PRODUCTION OF ELECTRIC WINDINGS

CUSTOM ELECTRIC WINDINGS

STANDARD ELECTRIC WINDINGS

PRODUCT ENGINEERING CONSULTANCY



Ignition coils  
Coils for electro-valves  
Coils for electromagnets  
High and low voltage coils  
Wiring  
Temperature sensors





# MOULD DESIGN AND INJECTION MOULDING

