

## THREADING AND GROOVING

# Threading Machine

## SQ50E

### Capacity

- Pipe: ¼"-2" (8mm-50mm)
- Bolt: 12mm-45mm

### Features

- Heavy-duty proven performance.
- Fast transport and set-up.
- Self-Contained Oil System with adjustable flow control.
- Approved by CE standards.

### Technical Specifications

- Motor: 1500W universal, 50/60Hz
- **Switch:** ON/OFF heavy duty switch, foot switch and FOR/OFF/REV switch are optional
- **Spindle Speed:** 38 RPM.
- **Front Chuck:** Hammer type with replaceable rocker action jaw inserts.
- **Rear Centering Device:** Cam action.
- **Oiling System:** Through die head, with intergral oil reservoir.
- **Pump:** Self-priming adjustable flow, gerotor pump.

### Standard Dies

- ½"-¾" universal HS dies set.
- 1"-2" universal HS dies set.

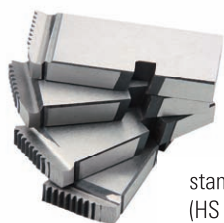
### Ordering Information

Catalog No.	Model No.	Description	Spindle Speed RPM	Pipe Threading Capacity		Rod Threading Capacity*	N.W (kg)
				in.	mm.	metric	
302312	SQ50E	110V, 50/60Hz	38	¼-2	8-50	M12-M45	75
302311	SQ50E	220V, 50/60Hz	38	¼-2	8-50	M12-M45	75

\* Die head and dies, order separately.

### Accessories

Catalog No.	Model No.	Description	N.W(kg)
	425	Die head, Quick-open (optional)	5.3
	424	Die head, Self-open (standard)	5.8
11001004	651	Pneumatic Folding Wheel Stand (optional)	22
40601003		reinforced cutting wheel	



standard dies  
(HS standard)



424 die head (standard)



reinforced cutting wheel



651 stand (optional)