

Resistive Linear Position Transducer



- Measuring range 50mm –1250mm
- Output 4-20 mA or 0-20 mA or 0-10 V
- Internal electronic circuit
- Stable output signal against supply voltage variations
- Best solution for automation systems

Main Applications

Metal Forming Machineries, Textile Machineries, Packing Machineries
Marble/ Stone Machineries, Printing Machineries and General Automation Applications

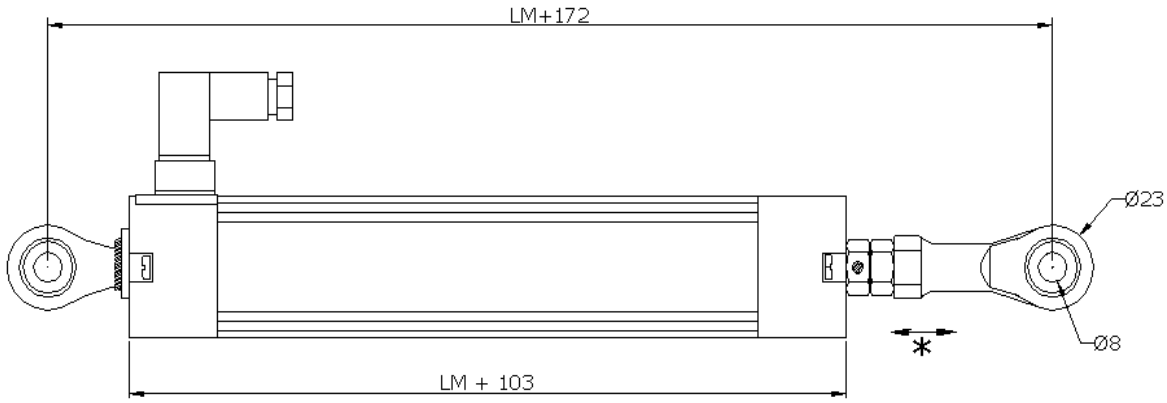
Specifications

Mechanical stroke	50mm to 1250mm
Output	4-20 mA or 0-20 mA or 0-10 V
Linearity	± %0,05
Resolution	Infinite
Load resistance	Min. 10 Kohm
Repeatability	≤ %0.01
Mechanical life	100 * 10 ⁶ Cycles
Displacement speed	≤ 5 m/s
Permissible applied voltage	13-30 VDC
Electrical connections	4 Pole connector
Case dimensions	Ø 38mm
Case material	Anodized aluminium
Rod diameter	10mm
Rod material	Stainless steel
IP Degree	IP 65
Working temperature	- 20 / + 80 °C
Mechanical fixing	2 Ball joints

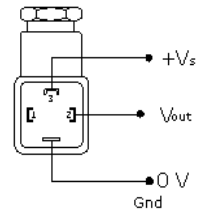
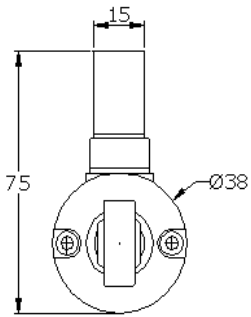
Dimensions

Model	LM	Mechanical stroke (MS)	Electrical measuring stroke (EMS)	Total lenght (L)
ELPC	50	52mm	50mm	193mm
ELPC	100	102mm	100mm	243mm
ELPC	125	127mm	125mm	268mm
ELPC	130	132mm	130mm	273mm
ELPC	150	152mm	150mm	293mm
ELPC	175	177mm	175mm	318mm
ELPC	200	202mm	200mm	343mm
ELPC	225	227mm	225mm	368mm
ELPC	250	252mm	250mm	393mm
ELPC	275	277mm	275mm	418mm
ELPC	300	302mm	300mm	443mm
ELPC	325	327mm	325mm	468mm
ELPC	350	352mm	350mm	493mm
ELPC	375	377mm	375mm	518mm
ELPC	400	402mm	400mm	543mm
ELPC	450	452mm	450mm	593mm
ELPC	500	502mm	500mm	643mm
ELPC	550	552mm	550mm	693mm
ELPC	600	602mm	600mm	743mm
ELPC	650	652mm	650mm	793mm
ELPC	700	702mm	700mm	843mm
ELPC	750	752mm	750mm	893mm
ELPC	800	802mm	800mm	943mm
ELPC	850	852mm	850mm	993mm
ELPC	900	902mm	900mm	1043mm
ELPC	1000	1002mm	1000mm	1143mm
ELPC	1250	1252mm	1250mm	1393mm

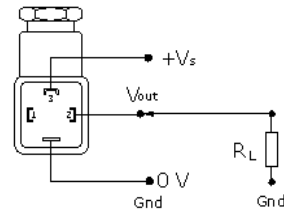
Mechanical dimensions



* (LM+172) - (LM+180)



Voltage output



Current output