



Heating on/off indicator

NTL 400 PTC Fan Heater		
Operating Voltage	120VAC or 230VAC, 120VAC & 230VAC	
Heating Element	PTC resistor-temperature limiting	

Art No.(Clip Fixing)	Heating Capacity	Operating Voltage
860074	150W	230VAC, 50/60Hz
860075	250W	
860076	300W	
860077	400W	
860078	500W	120VAC, 50/60Hz
860079	150W	
860080	250W	
860081	300W	
860082	400W	120 & 230VAC
860083	500W	
860296	150W	
860297	250W	
860298	300W	
860299	400W	
860300	500W	



NTL 401 PTC Fan Heater		
Operating Voltage	120VAC & 230VAC	
Heating Element	PTC resistor-temperature limiting	

Art No.	Heating Capacity	Operating Voltage
860084	150W	120 & 230VAC
860085	250W	
860086	300W	
860087	400W	



NTL 402 PTC Fan Heater		
Operating Voltage	120VAC & 230VAC	
Heating Element	PTC resistor-temperature limiting	

Art No.(Clip Fixing)	Heating Capacity	Operating Voltage
860241	150W	120 & 230VAC
860242	250W	
860243	300W	
860244	400W	



Double Isulation

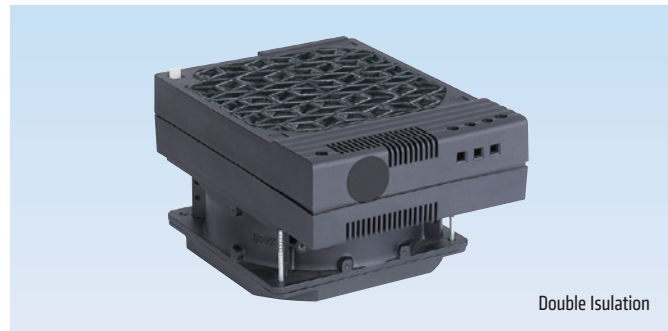
NTL 403 PTC Fan Heater		
Operating Voltage	120VAC or 230VAC, 120VAC & 230VAC	
Heating Element	PTC resistor-temperature limiting	

Art No.	Heating Capacity	Operating Voltage
860092	150W	230VAC, 50/60Hz
860093	250W	
860094	400W	
860095	150W	
860096	250W	120VAC, 50/60Hz
860097	400W	
860301	150W	
860302	250W	
860303	400W	120 & 230VAC



NTL 1500 PTC Fan Heater		
Operating Voltage	120VAC or 230VAC, 120VAC & 230VAC	
Heating Element	PTC resistor-temperature limiting	

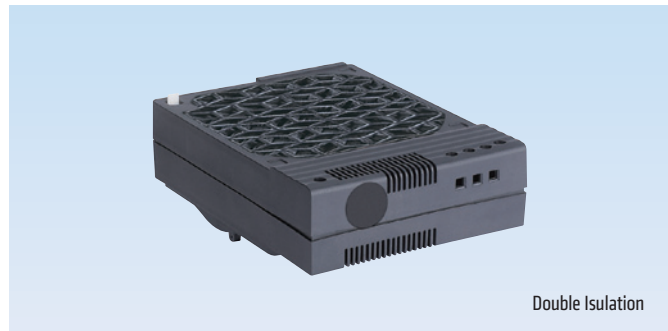
Art No.	Heating Capacity	Operating Voltage
860223	200W	230VAC, 50/60Hz
860224	250W	
860225	300W	
860226	400W	
860227	750W	230VAC, 50/60Hz
860228	950W	
860229	1000W	
860230	1200W	
860231	1500W	120VAC, 50/60Hz
860232	200W	
860233	250W	
860234	300W	
860235	400W	120VAC, 50/60Hz
860236	750W	
860237	950W	
860238	1000W	
860239	1200W	120 & 230VAC
860240	1500W	
860314	200W	
860315	250W	
860316	300W	120 & 230VAC
860317	400W	
860318	750W	
860319	950W	
860320	1000W	120 & 230VAC
860321	1200W	
860322	1500W	



Double Isulation

NTL 500-F PTC Fan Heater		
Heating Element	PTC resistor-temperature limiting	
Protection Class	IP20 / II(Double Insulated)	

Type	Art. No. clip fixing	Heating Capacity	Operating Voltage
With 230VAC Fan	860268	200W	230VAC, 50/60Hz
	860269	300W	
	860270	400W	
	860271	500W	
	860272	600W	
	860273	700W	
	860274	800W	
	860275	900W	
	860276	1000W	
	860277	1200W	
With 120VAC Fan	860278	200W	120VAC, 50/60Hz
	860279	300W	
	860280	400W	
	860281	500W	
	860282	600W	
	860283	700W	
	860284	800W	
	860285	900W	
	860286	1000W	
	860287	1200W	
With Dual Voltage Fan 120V & 230V	860304	200W	120 & 230VAC
	860305	300W	
	860306	400W	
	860307	500W	
	860308	600W	
	860309	700W	
	860310	800W	
	860311	900W	
	860312	1000W	
	860313	1200W	

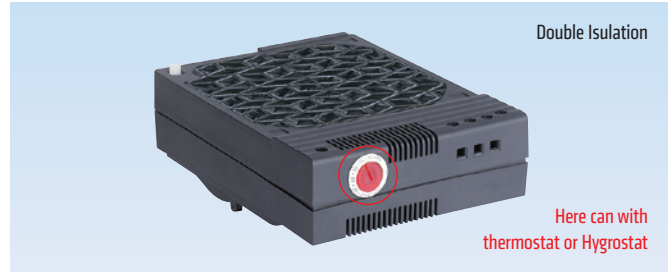


Double Isulation

NTL 500 PTC Heater		
Heating Element	PTC resistor-temperature limiting	
Protection Class	IP20 / II(Double Insulated)	

Art. No. twist clip fixing	Heating Capacity	Operating Voltage
860264	200W	120-230VAC/DC
860265	300W	
860266	400W	
860267	500W	

## Regulating/Heating/Ventilating/ Lighting/Fan



Double Isulation

Here can with  
thermostat or Hygostat

NTL 700 PTC Heater		
Heating Element	PTC resistor-temperature limiting	
Protection Class	IP20 / II(Double Insulated)	

Type	Art. No. clip fixing	Heating Capacity	Setting Range	Operating Voltage
With Electronic Thermostat	860098	200W	0 to +60°C +32 to +140°F	230VAC, 50/60Hz
	860099	300W		
	860100	400W		
	860101	500W		
	860102	600W		
With Electronic Thermostat	860103	700W	0 to +60°C +32 to +140°F	120VAC, 50/60Hz
	860104	200W		
	860105	300W		
	860106	400W		
	860107	500W		
	860108	600W		
	860109	700W		



Here can with  
thermostat or Hygostat

NTL 700-F PTC Fan Heater		
Heating Element	PTC resistor-temperature limiting	
Protection Class	IP20 / II(Double Insulated)	

Type	Art. No. clip fixing	Heating Capacity	Setting Range	Operating Voltage
With Electronic Thermostat	860146	200W	0 to +60°C +32 to +140°F	230VAC, 50/60Hz
	860147	300W		
	860148	400W		
	860149	500W		
	860150	600W		
	860151	700W		
	860248	800W		
	860249	900W		
	860250	1000W		
	860251	1200W		
With Electronic Thermostat	860152	200W	0 to +60°C +32 to +140°F	120VAC, 50/60Hz
	860153	300W		
	860154	400W		
	860155	500W		
	860156	600W		
	860157	700W		
	860252	800W		
	860253	900W		
	860254	1000W		
	860255	1200W		



Double Isulation

Here can with  
thermostat or Hygostat

NTL 700 PTC Heater		
Heating Element	PTC resistor-temperature limiting	
Protection Class	IP20 / II(Double Insulated)	

Type	Art. No. clip fixing	Heating Capacity	Setting Range	Operating Voltage
With Electronic Hygostat	860110	200W	40-90%RH	230VAC, 50/60Hz
	860111	300W		
	860112	400W		
	860113	500W		
	860114	600W		
With Electronic Hygostat	860115	700W	40-90%RH	120VAC, 50/60Hz
	860116	200W		
	860117	300W		
	860118	400W		
	860119	500W		
	860120	600W		
	860121	700W		



Here can with  
thermostat or Hygostat

NTL 700-F PTC Fan Heater		
Heating Element	PTC resistor-temperature limiting	
Protection Class	IP20 / II(Double Insulated)	

Type	Art. No. clip fixing	Heating Capacity	Setting Range	Operating Voltage
With Electronic Hygostat	860158	200W	40-90%RH	230VAC, 50/60Hz
	860159	300W		
	860160	400W		
	860161	500W		
	860162	600W		
	860163	700W		
	860256	800W		
	860257	900W		
	860258	1000W		
	860259	1200W		
With Electronic Hygostat	860164	200W	40-90%RH	120VAC, 50/60Hz
	860165	300W		
	860166	400W		
	860167	500W		
	860168	600W		
	860169	700W		
	860260	800W		
	860261	900W		
	860262	1000W		
	860263	1200W		



**NTL 10A-F / NTL 10B-F / NTL 10A-M / NTL 10B-M Mechanical Thermostat**

Operating Voltage	120-240VAC/DC (min. 110V, max. 265V)	
Sensor Element	Thermostatic Bimetal	
Protection Class	IP20	

Art No. (NC)	Art No. (NO)	Setting Range
860001	860006	0 to +60°C
860002	860007	-10 to +50°C
860003	860008	+20 to +80°C
860004	860009	+32 to +140°F
860005	860010	+14 to +122°F

**DMO 1140-F / DMS 1141-F / DMO 1140-M / DMS 1141-M Mechanical Thermostat**

Operating Voltage	120-240VAC/DC (min. 110V, max. 265V)	
Sensor Element	Thermostatic Bimetal	
Protection Class	IP20	

Art No. (NC)	Art No. (NO)	Setting Range
860011	860016	0 to +60°C
860012	860017	-10 to +50°C
860013	860018	+20 to +80°C
860014	860019	+32 to +140°F
860015	860020	+14 to +122°F

**NT 31-F / NT 32-F / NT 31-M / NT 32-M Mechanical Thermostat**

Operating Voltage	120-240VAC/DC (min. 110V, max. 265V)	
Sensor Element	Thermostatic Bimetal	
Protection Class	IP20	

Art No. (NC)	Art No. (NO)	Setting Range
860021	860026	0 to +60°C
860022	860027	-10 to +50°C
860023	860028	+20 to +80°C
860024	860029	+32 to +140°F
860025	860030	+14 to +122°F

**NT 33-F / NT 34-F / NT 33-M / NT 34-M Mechanical Thermostat**

Operating Voltage	120-240VAC/DC (min. 110V, max. 265V)	
Sensor Element	Thermostatic Bimetal	
Protection Class	IP20	

Art No. (NC)	Art No. (NO)	Setting Range
860031	860036	0 to +60°C
860032	860037	-10 to +50°C
860033	860038	+20 to +80°C
860034	860039	+32 to +140°F
860035	860040	+14 to +122°F

**NT 71-F Mechanical Dual Thermostat**

Operating Voltage	120-240VAC/DC (min. 110V, max. 265V)	
Sensor Element	Thermostatic Bimetal	
Protection Class	IP20	

Art No.	Setting Range (NC)	Setting Range (NO)
860041	0 to +60°C	0 to +60°C
860042	+32 to 140°F	+32 to 140°F
860043	-10 to +50°C	+20 to +80°C
860044	+14 to 122°F	+68 to +176°F
860045	0 to +60°C	0 to +60°C
860046	+32 to 140°F	+32 to 140°F

**NT 72-F DC Electronic Thermostat**

Operating Voltage	24VDC (20-28VDC)	
Sensor Element	PTC	
Protection Class	IP20	

Art No.	Setting Range	Operating Voltage
860051	0 to +60 °C	24VDC (20-28VDC)

**NT 73-F Switch Module**

Operating Voltage	24VDC or 48VDC	
Contact Type	Contact maker, normally open (Relay/MOSFET)	
Protection Class	IP20	

Art No.	Max switching capacity	Operating Voltage
860047	28VDC, 16A	24VDC (20-28VDC)
860048	56VDC, 16A	48VDC (38-56VDC)

**NT 74-F Mechanical Hygrostat**

Operating Voltage	20VAC/DC and 250VAC	
Switch difference	4%RH (±3% tolerance)	
Protection Class	IP20	

Art No.	Setting Range	Operating Voltage
860049	35 to 95%RH	20VAC/DC and 250VAC

**NT 75-F Electronic Thermostat**

Operating Voltage	120VAC or 230VAC	
Sensor Element	NTC	
Protection Class	IP20	

Art No.	Setting Range	Operating Voltage
860050	-20°C to +60°C	230VAC

**NT 76-M Electronic Thermostat**

Operating Voltage	120VAC or 230VAC	
Sensor Element	NTC	
Protection Class	IP20	

Art No.	Setting Range	Operating Voltage
860062	-20 to +60°C	230VAC, 50/60Hz
860063	-4 to +140°F	120VAC, 50/60Hz

**NT 77-M Electronic Hygrostat**

Operating Voltage	120VAC or 230VAC	
Sensor Element	Change-over Contact (Relay)	
Protection Class	IP20	

Art No.	Setting Range	Operating Voltage
860064	40 to 90% RH	230VAC, 50/60Hz
860065	40 to 90% RH	120VAC, 50/60Hz

**NT 78-M Electronic Hygrotherm**

Operating Voltage	120VAC or 230VAC	
Sensor Element	Change-over Contact (Relay)	
Protection Class	IP20	

Art No. (NC)	Art No. (NO)	Setting Range
860031	860036	0 to +60°C
860032	860037	-10 to +50°C
860033	860038	+20 to +80°C
860034	860039	+32 to +140°F
860035	860040	+14 to +122°F

**NTL 7000 Mechanical Thermostat**

Operating Voltage	120-230VAC/DC	
AC Load	NTL-7000A: 16A, NTL-7000B: 10A	
DC Load	30W	
Temperature Range	0-40°C	
Function	Heating, Cooling	
Switching Differential	±4K	
Sensor	NTL-7000A/7000B: Internal	
Ambient Temperature	-10-50°C	
Protect Class	IP20	
Material	Fireproof UL 94 V-0	
Sensor Type	NTL-7000A/7000B: Thermostatic Bimetal	

**NTL 8000 Electronic Hygrostat**

Operating Voltage	24V/48V/60V/110V/250V	
Max Load	16A	
Temperature Range	-20-60°C	
Function	Heating, Cooling	
Switching Differential	1K+/-0.8K	
Sensor	Internal	
Ambient Temperature	-5-60°C	
Protect Class	IP20	
Material	Fireproof UL 94 V-0	
Sensor Type	NTC	

**NTL 2000 Mechanical Thermostat**

Voltage	110V-230V±10%	
Max Load	6A	
Temperature Range	10-30°C	
Function	Heating, Cooling	
Switching Differential	±1°C	
Sensor	Internal	
Ambient Temperature	-20-55°C	
Protect Class	IP20	
Material	Fireproof UL 94 V-0	
Sensor Type	Gas filled syphon	

**LED 025**

Operating Voltage	48-265VAC/DC (min. 48V, max. 265V)	
Service Life	60,000h at 20°C (68°F)	
Protection Class	IP20 / II(Double Insulated)	
Approvals	CE, RoHS, Patent	

Art No. (Magnet fixing)	Art No. (Screw fixing)	Operating Voltage
02540.0-00	02540.0-01	48V-265VAC/DC

**NTL-FF120 Filter with Fan**

Operating Voltage	120VAC or 230VAC (Normal)	
Enclosure Cut-out	92×92mm	
Protection Class	IP54 or IP55 / I (earthed)	

Art No.	Operating voltage	Air volume, free flow	Air volume with exit filter
860204	AC 230V, 50/60Hz	39/48 CFM	32/41 CFM
860205	AC 115V, 50/60Hz	39/48 CFM	32/41 CFM

120VAC or 230VAC or 400VAC or 12VDC or 24VDC or 48VDC can be customer made

**NTL-F120 Exit Filter**

Operating Voltage	120VAC or 230VAC	
Enclosure Cut-out	92×92mm	
Protection Class	IP54 or IP55 / I (earthed)	

Art No.	Depth in enclosure
860206	24mm

**NTL-FF152 Filter with Fan**

Operating Voltage	120VAC or 230VAC (Normal)	
Enclosure Cut-out	124×124mm	
Protection Class	IP54 or IP55 / I (earthed)	

Art No.	Operating voltage	Air volume, free flow	Air volume with exit filter
860207	AC 230V, 50/60Hz	138/162 CFM	100/120 CFM
860208	AC 115V, 50/60Hz	138/162 CFM	100/120 CFM

120VAC or 230VAC or 400VAC or 12VDC or 24VDC or 48VDC can be customer made

**NTL-F152 Exit Filter**

Operating Voltage	120VAC or 230VAC	
Enclosure Cut-out	124×124mm	
Protection Class	IP54 or IP55 / I (earthed)	

Art No.	Depth in enclosure
860209	24mm

**NTL-FF204 Filter with Fan**

Operating Voltage	120VAC or 230VAC (Normal)	
Enclosure Cut-out	176×176mm	
Protection Class	IP54 or IP55 / I (earthed)	

Art No.	Operating voltage	Air volume, free flow	Air volume with exit filter
860210	AC 230V, 50/60Hz	138/162 CFM	100/120 CFM
860211	AC 115V, 50/60Hz	138/162 CFM	100/120 CFM

120VAC or 230VAC or 400VAC or 12VDC or 24VDC or 48VDC can be customer made

**NTL-F204 Exit Filter**

Operating Voltage	120VAC or 230VAC	
Enclosure Cut-out	176×176mm	
Protection Class	IP54 or IP55 / I (earthed)	

Art No.	Depth in enclosure
860212	24mm

**NTL-FF255 Filter with Fan**

Operating Voltage	120VAC or 230VAC (Normal)	
Enclosure Cut-out	223×223mm	
Protection Class	IP54 or IP55 / I (earthed)	

Art No.	Operating voltage	Air volume, free flow	Air volume with exit filter
860213	AC 230V, 50/60Hz	299/336 CFM	210/246 CFM
860214	AC 115V, 50/60Hz	299/336 CFM	210/246 CFM

120VAC or 230VAC or 400VAC or 12VDC or 24VDC or 48VDC can be customer made

**NTL-F255 Exit Filter**

Operating Voltage	120VAC or 230VAC	
Enclosure Cut-out	223×223mm	
Protection Class	IP54 or IP55 / I (earthed)	

Art No.	Depth in enclosure
860215	24mm

**NTL-FF323 Filter with Fan**

Operating Voltage	120VAC or 230VAC (Normal)	
Enclosure Cut-out	291×291mm	
Protection Class	IP54 or IP55 / I (earthed)	

Art No.	Operating voltage	Air volume, free flow	Air volume with exit filter
860216	AC 230V, 50/60Hz	780/890 CFM	680/880 CFM
860217	AC 115V, 50/60Hz	780/890 CFM	680/880 CFM