



Analyses – Concepts – Solutions

**PAPENMEIER**



## Since 1956

Linking tradition and innovation – for us that means continuously developing state-of-the-art technology without losing sight of the needs of our customers.

# PAPENMEIER



## RehaTechnik – rehabilitation technology

Electronic aids and appliances for the blind  
and the severely sight-impaired



## Lumiglas

Process observation and  
visual control systems



## Electronics

Development and production of electronic  
devices and circuit boards

We think in terms of solutions!



PAPENMEIER



## Mastering everyday life independently

Since 1975, products for the workplace and the home from Papienmeier RehaTechnik have opened up the information environment to blind and visually disabled people.

# RehaTechnik – rehabilitation technology

## Innovation for the blind and the partially sighted

Papenmeier RehaTechnik manufacture electronic aids and appliances for people who are blind or have a high degree of visual disability.

Besides developing and manufacturing auxiliary devices, the highly motivated and efficient team at Papenmeier RehaTechnik is also dedicated to safeguarding and sustainably establishing the professional future of people who are fully or partially blind as well as contributing towards their successful inclusion.

Specially trained software developers from Papenmeier review the accessibility of the application software used in organizations. Not only does the company offer consultancy and advice, but also expert opinions and target-group-orientated training sessions and workshops for decision-makers, software developers, project leaders and purchasers.

With their wide range of resources and individual solutions for the blind and partially sighted, Papenmeier have created new prospects – in everyday life, at school and at work!

The foundations of the rehabilitation technology division were laid as early as 1975 with the development of the BRAILLEX – the first device in the world for storing and reproducing Braille.

**Today, the BRAILLEX and VISULEX brands have grown to become products of international renown.**



# Lumiglas

## Process observation and visual control systems

*"What's happening in the bioreactor or in the vacuum drier?"*

*"Is the process in the agitator or filter system functioning properly?"*

*"How can I best monitor my production processes in closed vessels?"*

The patented crescent-shaped Lumiglas luminaire for providing a combination of light and sight glass was the innovative answer to these questions as early as 1960, laying the cornerstone for the Lumiglas division.

Nowadays, the extensive Lumiglas portfolio covers the entire range of sight glass luminaires - Ex and non-Ex, halogen and LED – and includes a wide variety of sight glass fittings, sight glass discs and camera systems for potentially explosive environments.

Ex- and UL-certified Lumiglas components are used in the pharmaceutical, chemical and food processing industries as well as being favoured for applications in the oil and gas industry.

**Lumiglas is your partner for constructive project planning in the field of visual monitoring.**





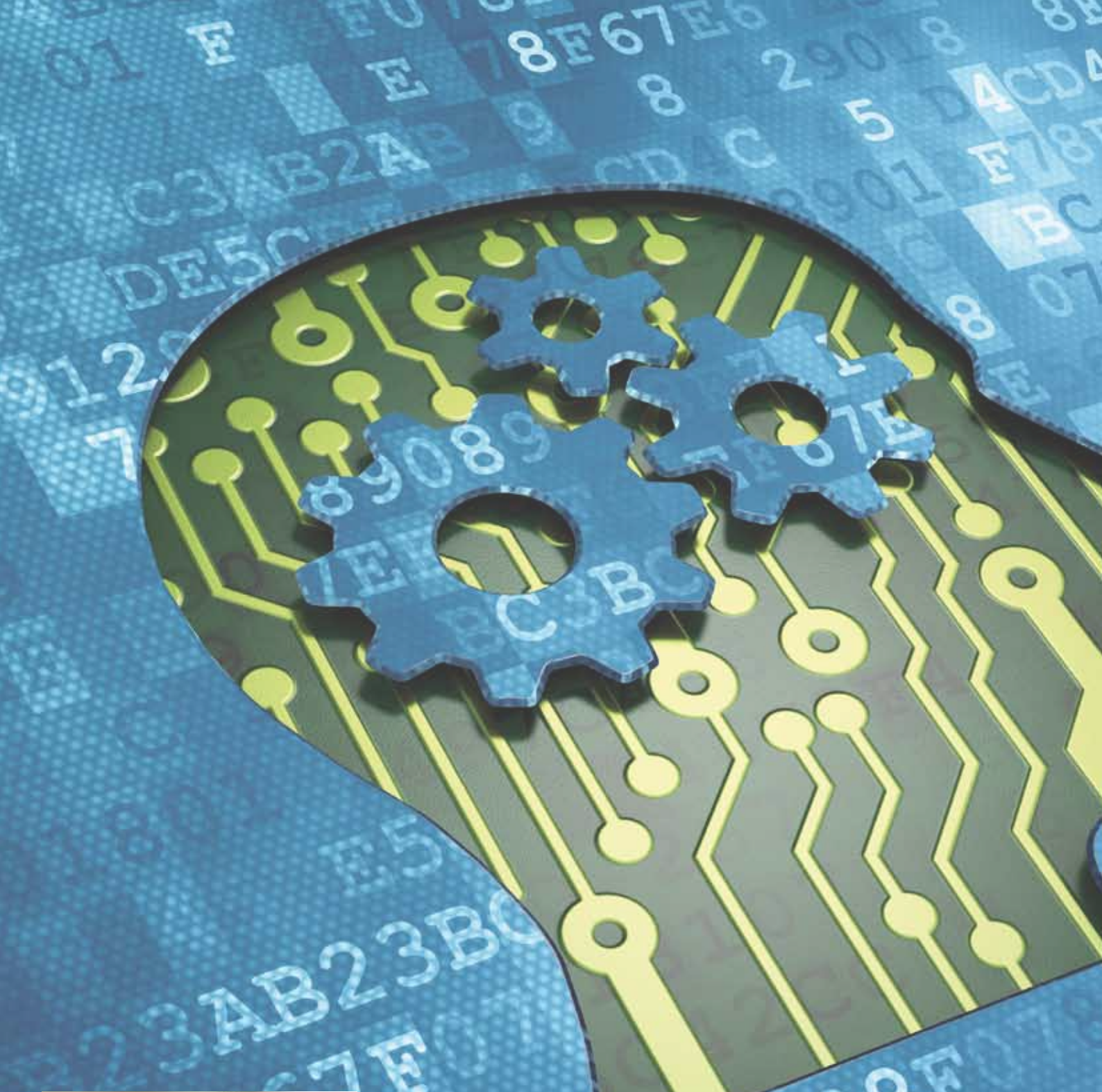


## Ensuring a clear view!

Lumiglas products are ideal for observing processes in pressure and vacuum vessels, tanks, reactors, silos, filters and other apparatus.







## Innovations from the electronics sector

Design and development of devices and printed circuit boards as well as manufacturing and test engineering – from the idea to the finished product.



# Electronics

## From idea to finished product

With the development, placement, UL-certified device production, structural component testing and the manufacture of small or large production lots, Papenmeier provide you with intelligent solutions from a single source.

From the planning phase and initial concept studies to design development, functional models and prototyping, experienced, highly-qualified specialists elaborate the optimal solution for your individual task definition.

Papenmeier customers benefit from our comprehensive experience in numerous industrial sectors such as automation, medical technology, precision engineering, plant construction and safety systems.

**The moment at which our partners realize that their expectations have been exceeded – that's the moment we work for!**



# Innovation? Or rather experience? *Preferably both!*

The history of our company is based on traditional values and goes back to 1956. Since then, the engineering firm established by electrical engineer Friedrich Horst Papenmeier has pursued an impressively successful path in the field of applied electrical engineering.

Today, Papenmeier is still an owner-managed family organization which is represented worldwide with its product divisions Lumiglas, RehaTechnik and Electronics.

## **Standstill is a step backwards**

With a view to the future, we are deeply committed to research and development.

## **Our aim is your efficiency**

Our promise is that we will remain consistently orientated to practical applications and continue to rise to new day-to-day challenges.

From idea to product!



# How to reach us...

## ... by car:

→ Motorway A1, exit Schwerte

## ... by train:

→ Station Schwerte/Ruhr –  
We will be happy to pick you up there!

## ... by plane:

→ Airport Dortmund (15 minutes by car)  
or Düsseldorf International Airport



# PAPENMEIER

## F.H. Papenmeier GmbH & Co.KG

Talweg 2  
58239 Schwerte  
Germany

Phone: +49 (0)2304 205-0  
Fax: +49 (0)2304 205-205  
info@papenmeier.de  
[www.papenmeier.de](http://www.papenmeier.de)

