



**GALACTIC**<sup>®</sup>  
ADVANCE ENGINEERING

Approved  
Partners  
  
Factory  
Automation  
Motion Control

**SIEMENS**

Approved Partner for **SIEMENS** in Malaysia

Most Promising Brand



Renewable Energy & Energy Savings



Established Brand



Company Profile



# INTRODUCTION

Incorporated in Malaysia, **Galactic Advance Engineering (M) Sdn. Bhd.** has over the past two decades supported the automation industries especially with reference to Siemens Simatic PLC S5, PLC S7, Siemens Drives, Simatic WinCC HMI. Speed and efficiency continues to be the primary driving force of our service and support team. Experiences gained through several encounters in emergency handling and troubleshooting at various plants has earned Galactic the reputation of giving quick and excellent support in the area of industrial automation solutions. This level of excellence is maintained by GAE through a rigorous pursuit where quality and reliability are never compromised at every stage of a project or service.

Our current venture into energy saving and renewable energy initiatives is aimed at maximizing clients' resources by helping them to gain optimum output for minimum input. Our installed base solar energy systems, Hydraulic Press Management Control System and Cold Room Energy Saving effort has yield positive outcome and given us confidence that the direction taken by Galactic to use automation based solutions to fuel energy saving combined with the injection of renewable energy paves the way to a sustainable future.

With our ready team of world class Engineers, we build, commission, service and maintain these automated systems. To our credit, Galactic Advance Engineering (M) Sdn Bhd is the System Engineering Arm to several multi-national companies in this region.

## We are specialized in

- Siemens PLC S5 & S7 Projects, Support Services and Spare Parts
- Wonderware InTouch visualisation & Archestra System Platform (Server-client)
- IEC Standards Software Development
- Master Drive – Migration to Sinamics
- PCS7 – Plant Automation
- Renewable Energy & Energy Saving Solutions
- Customized Purpose Built Machinery
- Actionable Analytics Industry 4.0
- Genie Smart Factory
- Terminal Management System
- Fail-Safe Machine Safety Interlock System







## COMPANY DETAILS

Date of Incorporation

13 August 1998

Registered Name

GALACTIC ADVANCE ENGINEERING (M) SDN BHD

Business Registration No

467395-V

Registered Business Address

No. 11, Jalan SS1/39, Kampung Tunku,  
47300 Petaling Jaya, Selangor Darul Ehsan,  
Malaysia

Communications

Tel : +6 03 7865 7383

Fax : +6 03 7865 7282

Email : [galactic@galactic-eng.com](mailto:galactic@galactic-eng.com)

Website : [www.galactic-eng.com](http://www.galactic-eng.com)

Contacts

Chief Operating Officer (COO)

012 206 7003

Sales & Service Manager

012 279 1029 (after office hours)

Industries Served

Chemical

Food & Beverage

Glove

Metal & Steel

Mining & Cement

Oleo Chemical

Oil & Gas

Pharmaceutical

Pulp & Paper

Semiconductors

# Vision Mission

## “Engineering Peace of Mind Solutions for Our Customer Needs”

At Galactic Advance Engineering, we take utmost pride in engineering performance and reliability into our projects and services. We commit strongly to serve our clients from beyond prompt delivery to rapid and efficient technical support.

The evidence is in our longstanding partnership with global cliental built on trust and result.

Our clients may acknowledge our strengths in advance engineering solutions,we prefer to say that we “*Engineer Peace of Mind*”.

## Mission

### Efficiency

Continuously striving to maximize production needs of our customers.

### Monitoring

Continually assessing our activities to identify improvement potentials and following through with enrichment programs.

### Creativity

To improve our working methods continuously seeking innovative solutions to surpass previous achievements.

### Strategy

The company’s strategy is characterized by robust growth and an ability to adapt spontaneously to new challenges.

## Our Achievement

With the vast and rapid movement of technology, particularly in the field of automation, our team of engineers are continually updated, trained and fully equipped to serve customers needs and to handle system failure every step of the way.

We provide remote troubleshooting services via web based control access from our pool of expertise, directly to our clients.

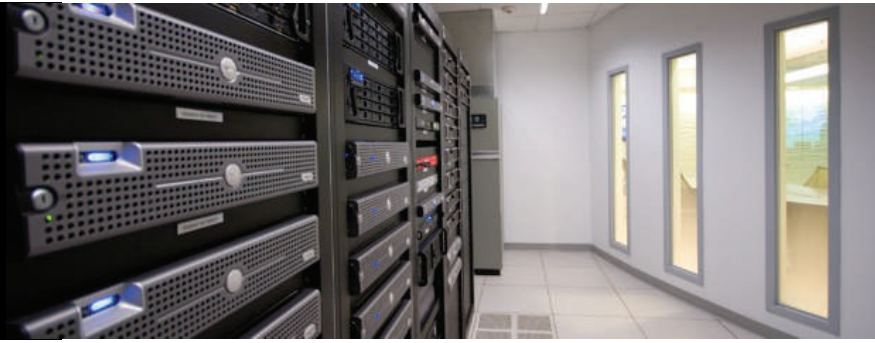
## Our Objective

To create a company that represents “Peace of Mind” solution to our clients’ automation needs.





## Support Services and Maintenance



# Our Commitment

Comprehensive project development and back-up support services

Project Engineering (New Projects) Including Project management, software, hardware engineering and panel building.

### *Support Services and Maintenance:*

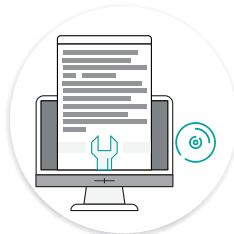
- Commissioning services
- 24 hours hotline connecting automated factory direct to fully trained Galactic Engineers.
- Back-up engineers available anywhere in the region on short-notice.
- Preventive maintenance programs with site visits at pre-determined intervals.
- Advice on recommended spare-parts of critical modules.
- Modification packages to change the configuration of the systems.
- Remote Trouble-Shooting services

At Galactic, we ensure total commitment and reliability by providing our clients the most comprehensive and structured support services available.

## ASIA PACIFIC ENGINEERING SUPPORT PARTNER



Facilitate  
local projects  
& services



Pre-equipped  
with industry  
hardware & software



Well trained  
technical team



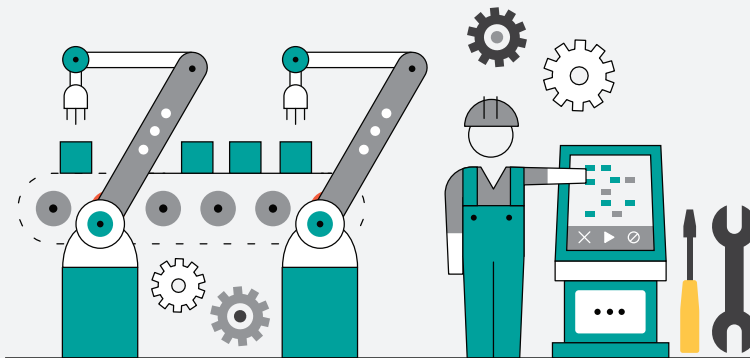
Industry ready  
SOPs & PPE



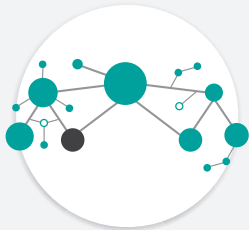
24/7 support team



## CUSTOMIZED PURPOSE BUILT MACHINERY



Designed & build  
customized machinery  
from scratch



Provide the missing  
link in operations



Build to your  
specific needs

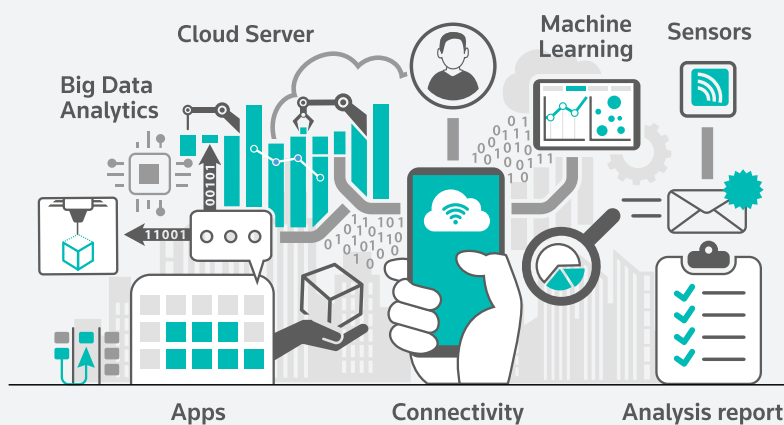


Built with  
non-proprietary  
components



Lifetime  
support

## ACTIONABLE ANALYTICS INDUSTRY 4.0



Increase productivity  
and reduce wear  
& tear of machines



Self-learning  
algorithms



Preventive  
& predictive  
maintenance



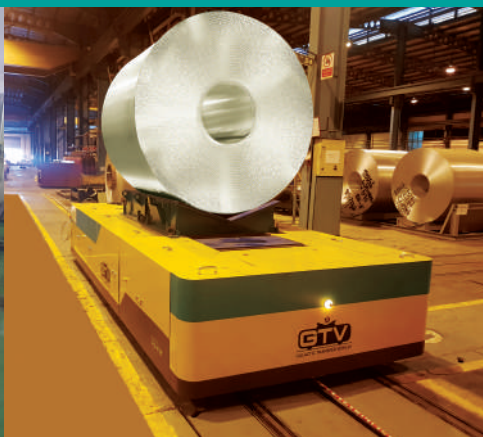
Vision based  
traceability



Production  
transparency  
via data sharing



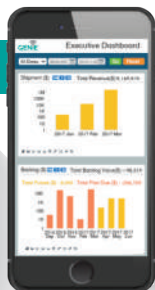
Reduce cost  
and Increase  
Plant Safety



## Customized Purposed Built Machines



## Terminal Management System



## Actionable Analytics Industry 4.0 Genie Smart Factory



## OUR CLIENTS





24/7 Technical  
Support



Turnkey Project  
Solutions



Energy  
Management



Integrated  
Automation



Machine  
Building



**GALACTIC ADVANCE ENGINEERING (M) SDN BHD**  
(467395-V)

No. 11, Jalan SS1/39, Kampung Tunku, 47300 Petaling Jaya  
Selangor Darul Ehsan, Malaysia

**T** : +60 3 7865 7383 **F** : +60 3 7865 7282

**E** : [genie@galactic-eng.com](mailto:genie@galactic-eng.com)

[www.galactic-eng.com](http://www.galactic-eng.com)