



NEWBILLION GROUP

ENGINEERING
SOLUTIONS
PROVIDER

TOGETHER WE MOVE FORWARD

www.newbillion.com



NEWBILLION GROUP

Together We Move Forward

Corporate Overview

Newbillion was incorporated in 1991, with a core business of providing **Engineering Solutions** by integrating CNC Machining, Die Casting, Engineering Plastic, Sub-Assembly processes and Supply Chain Management for various kinds of market industries.

Market Industries

- Medical Devices
- Advanced Electronics (Telecommunication)
- Automotive
- Electrical & Electronics



NEWBILLION GROUP

Together We Move Forward

Company Milestone

1991

Established as a **Precision Stamping Company** and diversified into **Zinc Die Casting**

2007

Established **CNC Precision Machining & Supply Chain Management Division**.
Setup **Integrated Engineering Solutions Division**

2014

Setup **CNC Auto lathes** and **Spraying Facility** for **Medical Devices & Automotive** Industry

2016

Setup **Aluminium High Pressure Die Casting**.

2017

Upgrading to **ISO9001:2015**.
Invested **Engineering Plastic Moulding Machine** to cater for Automotive Industry
Moving towards **IATF16949:2016**.



NEWBILLION GROUP

Together We Move Forward

Core Business



ALU & ZINC DIE CASTING



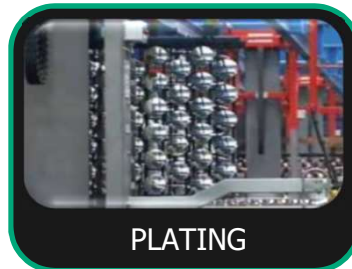
CNC MACHINING



ENG. PLASTIC MOLDING



SUB-ASSEMBLY



PLATING



POLISHING



ALU CUTTING



Engineering Solution Provider (ESP)

Fundamental

Niche

Differentiation
(Process Integration)

Mass Prod

Nature of Business

Zinc / Alu
Die-Casting

CNC
Machining

Plastic Injection
Molding

SCM

Assembly

Key Area of Focus

Global
Marketing

ICT Adoption

Best
Factory Site

Culture

Excellent
Machine

Talent

QMS

Finance

Main Department

Marketing

Production

Engineering

Quality

HR



NEWBILLION GROUP

Together We Move Forward

Cosmetic Precision Mechanical Components for Various Kinds of Market Industries (with integration of surface finishing processes)



CNC Division



Die Casting Division



Surface
Finishing
Division



Electroplating
Division

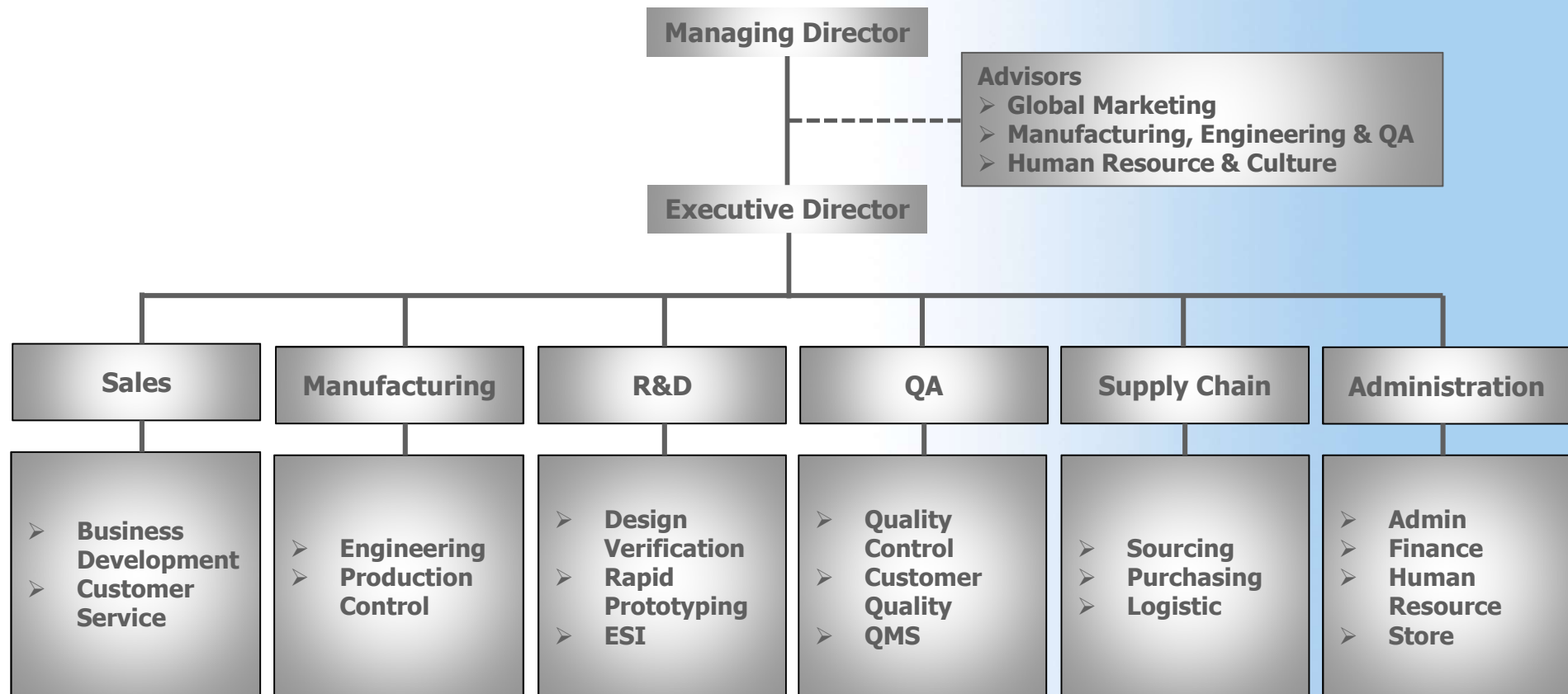


Coating
Division





Organization Chart





NEWBILLION GROUP

Together We Move Forward

Certification



ISO 9001 : 2015

www.newbillion.com



NEWBILLION GROUP

Together We Move Forward

Certified IATF 16949:2016



Newbillion Precision Metal Sdn. Bhd.

Towards

IATF 16949 : 2016



www.newbillion.com



NEWBILLION GROUP

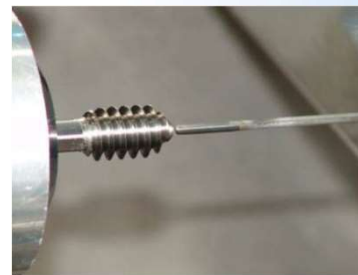
Together We Move Forward

CNC Precision Turning

- **Swiss Type Automatic Lathe, 8 axes type (6 linear + 2C)**
- **Equipped with special equipment & attachments capable to machine medical parts**
- **Mirror-like kinematics providing complete flexibility for main and counter operations**
- **Integrated with automatic bar feeder for uninterrupted mass production**



External thread whirling attachment to meet maker designed and complex thread for medical screws and must without burrs



Gun drilling process with 120 bars High-pressure pump with excellent bore diameter and drilling length ratio



High-frequency Spindle up to 80,000 rpm for milling complex shape like hexalobular (Torx) for either external or internal



NEWBILLION GROUP

Together We Move Forward

CNC Precision Turning

- **Swiss Type Automatic Lathe, 9 axes type (7 linear + 2C)**
- **2 independent platens for operations such as milling, slotting or balanced turning**
- **High tooling capacity and capable to machine high complexity parts**
- **Integrated with automatic bar feeder for uninterrupted mass production**

Single-spindle automatic turning machine with sliding headstock and NC. Capacity up to 25.4 mm



High performance Swiss type lathe with modular tooling concept.

Main advantages:

3 tools in the cut simultaneously.

The most dynamic spindles in its class.

Balanced turning and milling operation are possible.

Up to 25,4 mm capacity (with bar prep).

The most powerful spindles in its class.

Designed to work with or without guide bush.

Modular tooling system.

Up to 36 tools.

Large work zone allowing easy access to the tools from both sides of the machine.

Ergonomics designed with the operator in mind.

Open design for excellent chip evacuation into the large chip container



NEWBILLION GROUP

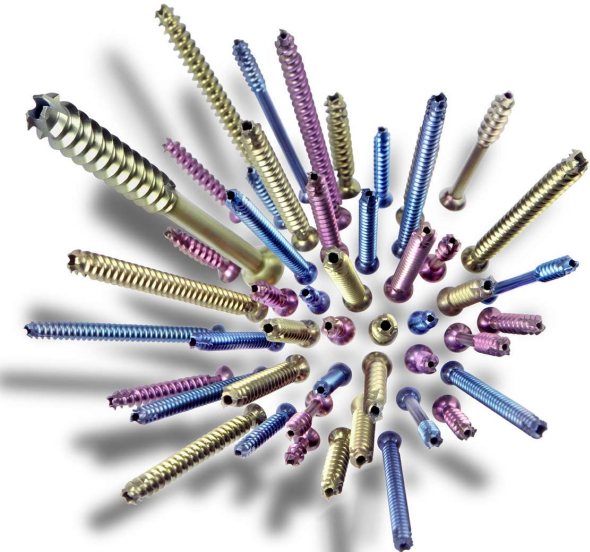
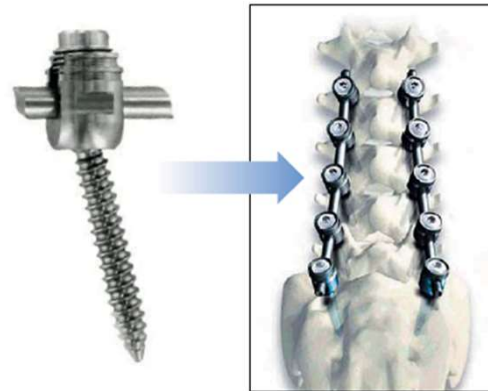
Together We Move Forward

CNC Precision Turning - Capabilities

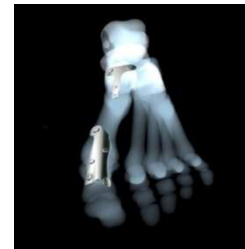


Medical Implants, Instrument and Tooling

- Cannulated screws
- Locking screws
- Cortical screws
- Lag / hip screws
- Mono-axial / poly-axial bone screws
- Spine hooks
- Connecting Rods
- Nails
- Tooling
- Nuts
- Others



SPINAL
DEFORMITY



MOTION



TRAUMA



INTERBODY
FUSION



NEWBILLION GROUP

Together We Move Forward

CNC Precision Turning - Capabilities

Automotive parts used in :

- Turbocharger
- Airbag system
- Braking system
- Steering system
- Transmission system
- Injector
- Electric motor
- Ball bearing
- Gasoline parts
- Diesel parts
- etc





NEWBILLION GROUP

Together We Move Forward

CNC Precision Turning - Capabilities

Electrical & Electronic parts



Free cutting steel



Free cutting steel



Stainless steel 303



Peek



Brass



Brass



Brass



Stainless steel 303



Stainless steel 303



Stainless steel 303



Stainless steel 303



Stainless steel 303



Stainless steel 303



Stainless steel 416



Stainless steel 430



Stainless steel 303



Stainless steel 303



Stainless steel 303



Stainless steel 430



NEWBILLION GROUP

Together We Move Forward

CNC Precision Milling **(3 axes Type Vertical Machining Center)**



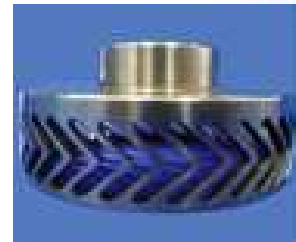
- Max. Travel Distance : 1,100mm x 600mm
- Max. Spindle Speed : 12,000rpm
- Distance from Spindle nose to Table surface (mm) : 100mm - 700mm
- Table Loading Capacity : 800kg
- JIS 6338 Accuracy, tested in temperature controlled room, Positioning & Repeatability (within 300mm) :
 - ☐ +/- 4 microns (positioning)
 - ☐ +/- 2 microns (repeatability)



NEWBILLION GROUP

Together We Move Forward

Products



Solid material : Alu6083, Alu6061, Alu6063, SUS303, SUS431, SUS440, SS13-8, SS15-5 PH, SS17-4 PH, Titanium Grade 2 & Grade 5, Grade 23 (medical), Inconel 718, Inconel 625



NEWBILLION GROUP

Together We Move Forward

Casting Capabilities



HOT CHAMBER

- Material : Zinc
- Machine tonnage 60 ton
- Maximum shot weight of 1.2kg
- Part's max. weight : approx. 0.8kg
- Part's max. size : 150mm x 150mm * Subjective



COLD CHAMBER

- Material : Aluminum
- Machine tonnage 125T to 350T
- Maximum shot weight of 2.2kg
- Part's max. weight : approx. 1.5kg
- Part's max. size : 250mm x 250mm * Subjective



NEWBILLION GROUP

Together We Move Forward

Casting Products



Raw material : ADC12, A380, A383, A413, A360, A384, LM20, Zamak 3, Zamak 5



NEWBILLION GROUP

Together We Move Forward

Plastic Injection Molding Machine



- Clamp tonnage (kN) : 1,200 ; 1,600
- Mold platen dimensions : 625mm x 627mm ; 705mm x 705mm
- Space between tie bars : 410mm x 410mm ; 470mm x 470mm
- Mold height (min. to max.) : 150mm to 450mm ; 180mm to 520mm
- Molding material : PBT 30 GF, POM, TPU and other engineering grade plastic materials



NEWBILLION GROUP

Together We Move Forward

Internal QC - Metrology Lab



Smart Scope Focuz 3020 VMS



Axiom T00 CMM



3D Measuring Scope



Optical Comparator



Zeiss Spectrum II CMM



NEWBILLION GROUP

Together We Move Forward

Thank You

Office :

Tel : +604 - 5884162, 5871503, 5871782

Fax : +604 - 5884163

Kenny Tan (MD)

H/P : +6019 - 574 8833

Email : kennytan@newbillion.com

www.newbillion.com