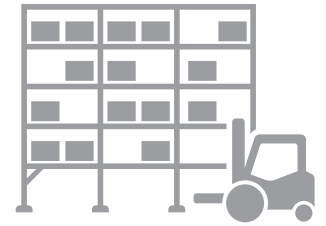


+ PSI Logistics Suite

PSI *lums* 100% Releaseability – Future Included

PSI 



PSI*wms*

The warehouse management system for optimizing your intralogistics

PSI*wms* plans, controls and optimizes business processes in intralogistics. The product provides modules with exclusive, trendsetting developments.

You are supplied with a powerful standard system that can be easily and flexibly adapted to the respective requirements thanks to its modular structure. The principle is: as much as necessary, as lean as possible.

For your project we will provide you with the security that your logistics deserves: We have decades of experience and have already put into operation several hundred successful warehouse projects.

As a 100 % subsidiary PSI Logistics bundles the profound logistics competence of the PSI corporation that employs 1650 staff worldwide. Founded in 1969 PSI is one of the renowned German software houses and belongs to the TOP 10 of the German standard software companies.



Best practices included for

- + Logistics service providers
- + Automotive and industry
- + Commerce and e-commerce
- + Spare parts logistics
- + Health care



Benefits

- + Best practice solutions for fast and reliable projects
- + Standard interfaces – hundredfold in action, security for new projects and operations
- + Flexibility and versatility for your individual requirements and processes
- + High degree of innovation keeps your logistics at the top with trendsetting and reliable technology
- + Quality is our mission: Customers confirm that you can always rely on PSI*wms*
- + Everything from a single source: Software and services (24/7 service)
- + Regardless of industry sector and warehouse size

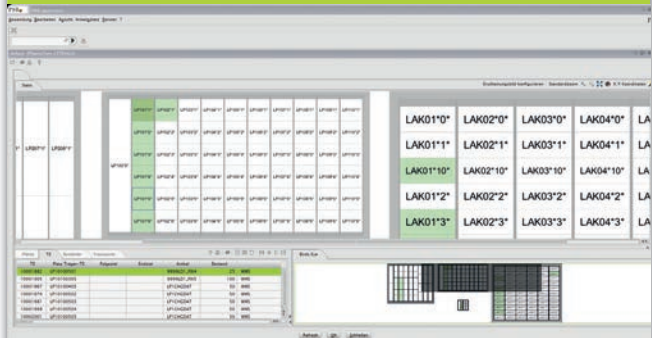


Features



- + 100 % releaseability, regardless of the degree of customization
- + PSI CLCK-DESIGN – Adapt and combine dialogs as your process demands
- + Automated testing – Quality at all times
- + Rules tables for put away and retrieval strategies
- + Personalised drill-down cockpit
- + Process-oriented warehouse visualization
- + Deadhead time optimization by means of fuzzy logic
- + Site and system spanning WMS control (Warehouse Service Broker)
- + Self-configuring system (Adaptive Scenario Management)
- + Modelling on dialog level or offline

New in release 3.5



- + PSI CLICK-DESIGN – with full utilization of 4K monitors
- + PSIwms myCockpit
- + Dock and Slot Management
- + Mobile Control Station – Control station on the go
- + Process-oriented warehouse visualisation
- + Visualisation of goods recipients by means of Open Street Map

Selected reference customers:





PSI Logistics GmbH

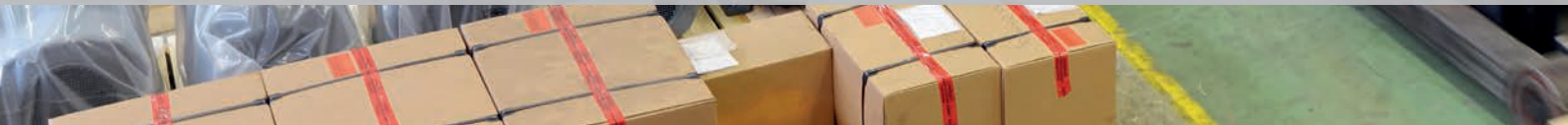
Dircksenstrasse 42-44
10178 Berlin (Mitte)
Germany

Phone: +49 30 2801-2850

Fax: +49 30 2801-2851

info@psilogistics.com

www.psilogistics.com



PSI 