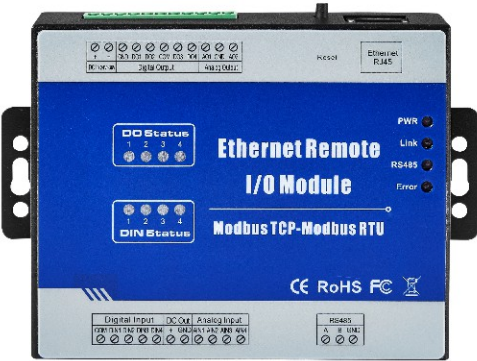


Ethernet Remote IO Modules

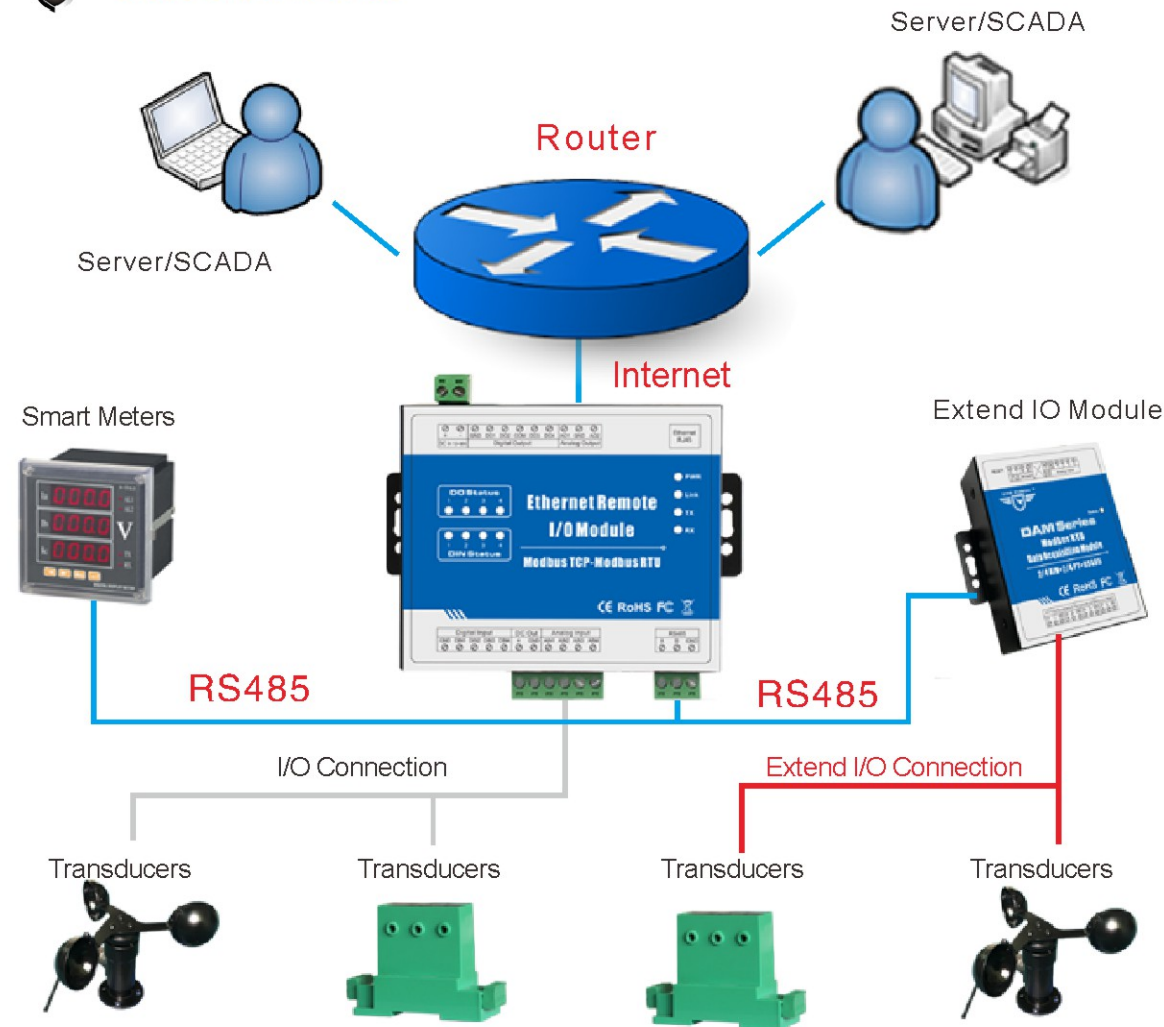


Ethernet Remote I/O Module is an industrial class, isolated designed, high reliability, high stability and high precision data acquisition module, embedded 32-Bit High Performance Microprocessor MCU, Integrated 1 Industrial 10/100M adaptive Ethernet module inside.

It provides multi I/O, supports standard Modbus TCP, can be intergraded into SCADA, OPC server, and other automation systems. It is design for working in the harsh industrial application environment, widely used in a variety of industrial automation.

Main Features:

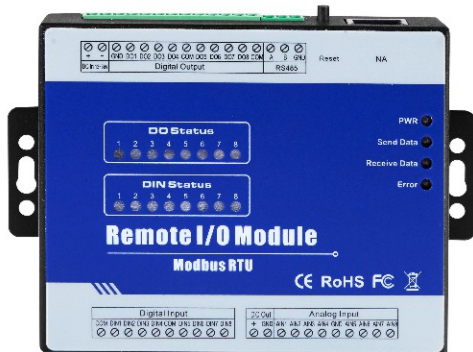
- ◆ Integrated 10/100M adaptive Ethernet module, supports Modbus TCP protocol;
- ◆ Wide range power supply 12 ~ 36VDC with over voltage and phase-reversal protection;
- ◆ Embedded 32-Bit High Performance Microprocessor MCU, inbuilt watchdog;
- ◆ Optical isolated digital input, supports Max. 10MHz high speed pulse counter;
- ◆ Sink output or relay output, supports 10Hz~300KHz high speed pulse output;
- ◆ Isolated analog input, 12-bit resolution, supports 0~20mA, 4~20mA, 0~5VDC, 0~10VDC;
- ◆ 1 RS485 Serial port, supports Modbus RTU/ASCII Master, can extend I/O modules;
- ◆ RTD input, supports PT100 and PT1000 resistance sensor, compatible 2 or 3 wires;
- ◆ Supports Modbus RTU/ASCII Master, can extend I/O modules;
- ◆ Using metal shell, protection class IP30. Metal shell and system security isolation, especially suitable for industrial applications in the field;
- ◆ L105 * W88 * H30mm, compatible wall installation and DIN35mm industrial rail installation.



Modbus TCP Ethernet Remote I/O Module Table

Model	Descriptions	DC Output	DC Input
M100T	1 RJ45, 1 RS485, 2DI, 2 AI, 2DO(Sink)or Relay	1 DC	12~36VDC
M110T	1 RJ45, 1 RS485, 4DI, 4 DO(Sink)or Relay	1 DC	
M120T	1 RJ45, 1 RS485, 4DI, 4AI, 2AO, 4DO(Sink)or Relay	1 DC	
M130T	1 RJ45, 1 RS485, 8DI, 4 DO(Sink)or Relay	1 DC	24VDC
M140T	1 RJ45, 1 RS485, 8DI, 8 DO(Sink)or Relay	1 DC	
M150T	1 RJ45, 1 RS485, 8DI, 4 AI, 4DO(Sink)or Relay	1 DC	
M160T	1 RJ45, 1 RS485, 8DI, 8 AI, 8DO(Sink)or Relay	1 DC	12~36VDC
M200T	1 RJ45, 1 RS485, 2AO	1 DC	
M210T	1 RJ45, 1 RS485, 4DI	1 DC	
M220T	1 RJ45, 1 RS485, 4DO(Sink)or Relay	1 DC	24VDC
M230T	1 RJ45, 1 RS485, 4AI	1 DC	
M240T	1 RJ45, 1 RS485, 4RTD, 2/3 wire PT 100/pt1000	--	
M310T	1 RJ45, 1 RS485, 8DI	1 DC	12~36VDC
M320T	1 RJ45, 1 RS485, 8DO (Sink)or Relay	1 DC	
M330T	1 RJ45, 1 RS485, 8AI	1 DC	
M340T	1 RJ45, 1 RS485, 8RTD, 2/3 wire PT 100/pt1000	--	12~36VDC
M410T	1 RJ45, 1 RS485, 16DI	1 DC	
M 420T	1 RJ45, 1 RS485, 16DO (Sink)or Relay	--	

Modbus RTU Remote IO Modules



Modbus Remote I/O Module are industrial class, high reliability, high stability and high precision data acquisition module, embedded 32-Bit High Performance Microprocessor MCU, it provides 1 RS485 interface. It provides multi I/O, supports standard Modbus RTU, can be intergraded into SCADA, OPC server, HMI and other automation systems. It is design for working in the harsh industrial application environment, widely used in a variety of industrial automation.



SCADA

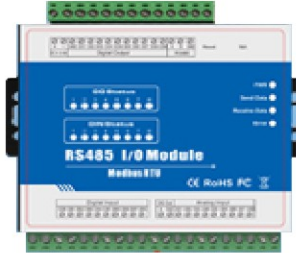


PLC



HMI

RS485Bus-Modbus RTU Protocol



Transducers,Encode,Stepper Motor,Digital Inputs,Digital Outputs,RTD sensors,Relays etc.

Main Features:

- ◆Wide range power supply 24 ~ 36VDC with over voltage and phase-reversal protection;
- ◆Embedded 32-Bit High Performance Microprocessor MCU, inbuilt watchdog;
- ◆Optical isolated digital input, supports max. 10MHz high speed pulse counter;
- ◆isolated analog input, 12-bit resolution, supports 0~20mA,4~20mA,0-5VDC, 0-10VDC;
- ◆1 RS485 Serial port, supports Modbus RTU protocol;
- ◆RTD input support PT100 and PT1000 resistance sensor, compatible 2 or 3 wires, measure range -120 ~420℃;
- ◆Provides 1 channel 12~36VDC power source output for external device, saving wiring cost;
- ◆LED instructions work status,with reset button to reset, easy on-site installation and commissioning;
- ◆Using metal shell, protection class IP30. Metal shell and system security isolation, especially suitable for industrial applications in the field;
- ◆Small size, L105 * W88 * H30mm, compatible wall installation and DIN35mm industrial rail installation.

M Series Modbus Remote I/O Module Table

Model	Descriptions	DC Output	DC Input
M100	1 RS485,2DI,2 AI,2DO(Sink)or Relay	1 DC	12~36VDC
M110	1 RS485,4DI,4 DO(Sink)or Relay	1 DC	
M120	1 RS485,4DI,4AI, 2AO,4DO(Sink)or Relay	1 DC	
M130	1 RS485,8DI,4 DO(Sink)or Relay	1 DC	12~36VDC
M140	1 RS485,8DI,8 DO(Sink)or Relay	1 DC	
M150	1 RS485,8DI,4 AI,4DO(Sink)or Relay	1 DC	
M160	1 RS485,8DI,8 AI,8DO(Sink)or Relay	1 DC	
M200	1 RS485,2AO	1 DC	12~36VDC
M210	1 RS485,4DI	1 DC	
M220	1 RS485,4DO(Sink)or Relay	1 DC	
M230	1 RS485,4AI	1 DC	
M240	1 RS485,4RTD,2/3 wire PT 100/pt1000	--	12~36VDC
M310	1 RS485,8DI	1 DC	
M320	1 RS485,8DO (Sink)or Relay	1 DC	
M330	1 RS485,8AI	1 DC	
M340	1 RS485,8RTD,2/3 wire PT 100/pt1000	--	12~36VDC
M410	1 RS485,16DI	1 DC	
M 420	1 RS485,16DO (Sink)or Relay	--	