

www.rubig.com

RUBIG
DIE FORGE

**Reliable and
durable**

Linchpins

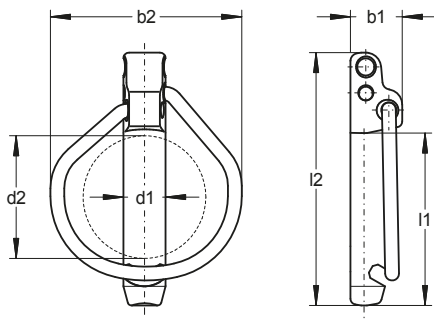


Visit our webshop
www.rubig-shop.com



SAFETY LINCH PIN

Forged steel shaft, hardened to 1.200 – 1.400 N/mm²; spring made from spring steel wire, galvanized and yellow thick film passivated. The minimum values required by DIN 11023 are considerably exceeded by all RÜBIG Safety Linch Pins.



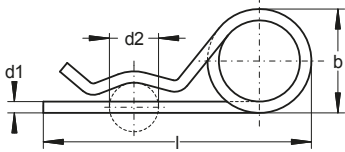
| Size | Order no. | d1 | d2 | l1 | l2 | b1 | b2 |
|--------|-----------|------|-----|-----|-------|------|------|
| 4x27 | 02380000 | 3,8 | 20 | 24 | 39,5 | 11 | 29 |
| 5x32 | 02470000 | 4,7 | 25 | 29 | 48 | 11 | 34 |
| 6x27 | 02580000 | 5,8 | 20 | 25 | 40,5 | 11 | 29 |
| 6x42 | 02550000 | 5,5 | 32 | 42 | 63 | 13,5 | 49 |
| 8x42 | 02750000 | 7,5 | 32 | 42 | 63 | 13,5 | 49 |
| 8x62 | 02750200 | 7,5 | 53 | 62 | 83 | 20 | 69 |
| 10x45 | 02950000 | 9,5 | 32 | 45 | 66 | 14 | 49 |
| 10x55 | 02950200 | 9,5 | 45 | 55 | 77 | 14,5 | 58 |
| 10x65 | 02950300 | 9,5 | 53 | 65 | 85 | 21,5 | 67 |
| 10x100 | 02950600 | 9,5 | 80 | 100 | 123,5 | 25 | 100 |
| 12x45- | 02110000 | 10,5 | 32 | 45 | 66 | 14 | 49 |
| 12x45+ | 02120000 | 11,5 | 32 | 45 | 66 | 14 | 49 |
| 12x55+ | 02120200 | 11,5 | 45 | 55 | 77 | 14,5 | 60 |
| 12x65 | 02120300 | 11,5 | 53 | 65 | 85 | 21,5 | 67 |
| 12x75 | 02120400 | 11,5 | 60 | 75 | 95 | 21,5 | 81 |
| 12x100 | 02120600 | 11,5 | 80 | 100 | 123,5 | 25 | 100 |
| 17x60 | 02160000 | 15,5 | 53 | 60 | 80 | 20 | 67,5 |
| 17x75 | 02160200 | 15,5 | 60 | 75 | 95 | 21,5 | 81 |
| 17x100 | 02160400 | 15,5 | 80 | 100 | 123,5 | 25 | 100 |
| 17x125 | 02160800 | 15,5 | 105 | 125 | 155 | 30 | 132 |

Changes can be found on our website: www.rubig.com

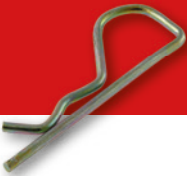


DOUBLE WOUND R-CLIP

conforming to DIN 11024, made from spring steel wire, galvanized and yellow chromated.

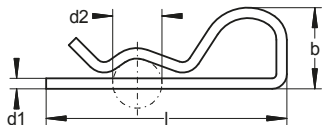


| Size | Order no. | d1 | d2 | l | b |
|------|-----------|------|-----------|-----|----|
| 2,5 | 04252801 | 2,25 | 9 - 11,2 | 54 | 25 |
| 3,2 | 04282801 | 2,8 | 11,2 - 14 | 61 | 26 |
| 4 | 04362801 | 3,6 | 14 - 20 | 78 | 27 |
| 5 | 04452801 | 4,5 | 20 - 26 | 97 | 34 |
| 6,3 | 04562801 | 5,6 | 26 - 34 | 115 | 36 |
| 7 | 04632801 | 6,3 | 34 - 45 | 146 | 42 |
| 8 | 04702801 | 7 | 45 - 56 | 172 | 44 |



R-CLIP

made from spring steel wire, galvanized and yellow chromated; for a wide range of application.



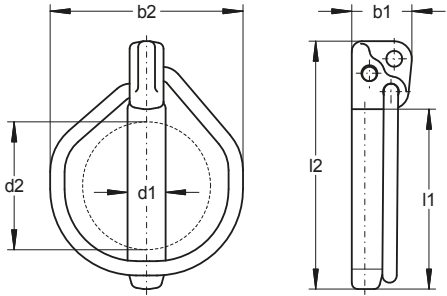
| Size | Order no. | l | b | d2 |
|------|-----------|-----|----|---------|
| 2,5* | 04252000 | 58 | 21 | 10 - 20 |
| 3,6* | 04362000 | 83 | 29 | 20 - 30 |
| 4,5 | 04452000 | 105 | 41 | 25 - 40 |

* available in stainless steel



DIN-LINCH PIN

Forged steel shaft, meets all dimensions and minimum values required by DIN 11023. Spring made from spring steel wire, galvanized and yellow thick film passivated. Some sizes are available in stainless steel.

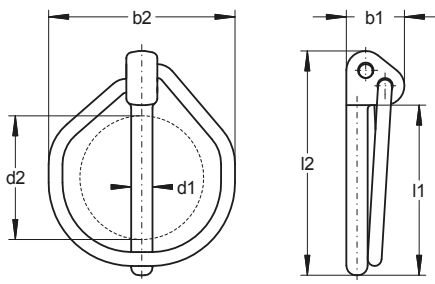


| Size | Order no. | d1 | d2 | l1 | l2 | b1 | b2 |
|--------|-----------|------|----|-----|-------|------|------|
| 4x27 | 01382000 | 3,8 | 20 | 27 | 42 | 11 | 29 |
| 5x32 | 01472000 | 4,7 | 25 | 32 | 48 | 11 | 34 |
| 5x42 | 01472200 | 4,5 | 32 | 42 | 63 | 13,5 | 50 |
| 6x27 | 01582000 | 5,8 | 20 | 27 | 43 | 11 | 29 |
| 6x42 | 01552000 | 5,5 | 32 | 42 | 63 | 13,5 | 49 |
| 8x42 | 01752000 | 7,5 | 32 | 42 | 63 | 13,5 | 49 |
| 8x62 | 01752900 | 7,5 | 53 | 62 | 83 | 20 | 69 |
| 10x45 | 01952000 | 9,5 | 32 | 45 | 62 | 15 | 49 |
| 10x55 | 01952200 | 9,5 | 45 | 55 | 72 | 15 | 59 |
| 10x65 | 01952300 | 9,5 | 53 | 65 | 85 | 21,5 | 67 |
| 10x100 | 01952500 | 9,5 | 80 | 100 | 123,5 | 25 | 100 |
| 12x45- | 01112000 | 10,5 | 32 | 45 | 62 | 15 | 50 |
| 12x45+ | 01122000 | 11,5 | 32 | 45 | 62 | 15 | 50 |
| 12x55+ | 01122200 | 11,5 | 45 | 55 | 72 | 15 | 59 |
| 12x65 | 01122300 | 11,5 | 53 | 65 | 85 | 21,5 | 67 |
| 12x75 | 01122400 | 11,5 | 60 | 75 | 95 | 21,5 | 81 |
| 12x100 | 01122500 | 11,5 | 80 | 100 | 123,5 | 25 | 100 |
| 17x60 | 01162000 | 15,5 | 53 | 60 | 80 | 20 | 67,5 |
| 17x75 | 01162200 | 15,5 | 60 | 75 | 95 | 21,5 | 81 |



COMMERCE- LINCH PIN

Forged steel shaft; spring made from spring steel wire; galvanized and yellow thick film passivated.

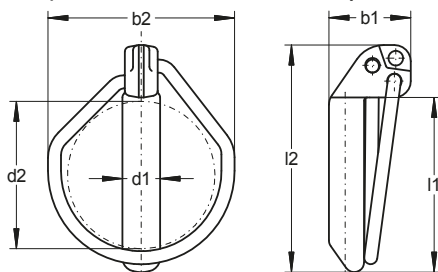


| Size | Order no. | d1 | d2 | l1 | l2 | b1 | b2 |
|------|-----------|------|----|----|----|----|----|
| 5,5 | 03552000 | 5,5 | 32 | 44 | 59 | 15 | 49 |
| 7,5 | 03752000 | 7,5 | 32 | 44 | 59 | 15 | 49 |
| 9,5 | 03952000 | 9,5 | 32 | 44 | 59 | 15 | 49 |
| 10,5 | 03112000 | 10,5 | 32 | 44 | 59 | 15 | 49 |



QUICK AKTION COUPLER

Forged steel shaft, hardened to 1.200 – 1.400 N/mm²; spring made from spring steel wire; galvanized and yellow thick film passivated. Spare Part for Quick Action systems.

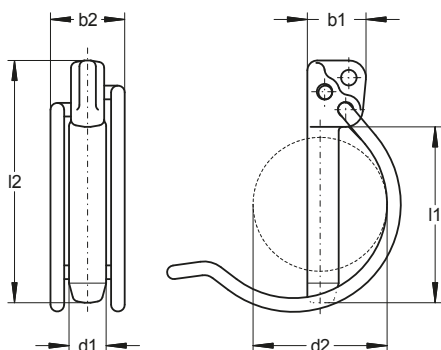


| Size | Order no. | d1 | d2 | l1 | l2 | b1 | b2 |
|-------|-----------|------|----|----|----|----|----|
| K II | 01122700 | 11 | 48 | 52 | 68 | 25 | 58 |
| K III | 01162700 | 15,5 | 54 | 60 | 80 | 31 | 69 |



TUBECLIP

Forged steel shaft, meets all dimensions and minimum values required by DIN 11023; spring made from spring steel wire; galvanized and yellow thick film passivated. Some sizes are available in stainless steel.



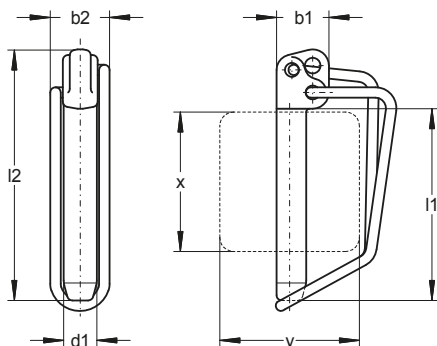
| Size | Order no. | d1 | d2 | l1 | l2 | b1 | b2 |
|--------|-----------|------|----|----|----|------|----|
| 5x32 | 06472500 | 4,7 | 30 | 32 | 48 | 11 | 16 |
| 5x42 | 06472502 | 4,5 | 35 | 42 | 63 | 13,5 | 20 |
| 6x42 | 06552500 | 5,5 | 35 | 42 | 63 | 13,5 | 20 |
| 8x42 | 06752500 | 7,5 | 35 | 42 | 63 | 13,5 | 20 |
| 8x62 | 06752900 | 7,5 | 50 | 62 | 83 | 20 | 24 |
| 10x45 | 06952500 | 9,5 | 40 | 45 | 62 | 15 | 20 |
| 10x55 | 06952501 | 9,5 | 50 | 55 | 72 | 15 | 24 |
| 10x65 | 06952502 | 9,5 | 50 | 65 | 85 | 21,5 | 24 |
| 12x45- | 06112500 | 10,5 | 40 | 45 | 62 | 15 | 20 |
| 12x45+ | 06122500 | 11,5 | 40 | 45 | 62 | 15 | 20 |
| 12x55+ | 06122501 | 11,5 | 50 | 55 | 72 | 15 | 24 |
| 12x65 | 06122502 | 11,5 | 50 | 65 | 85 | 21,5 | 24 |
| 12x75 | 06122504 | 11,5 | 65 | 75 | 95 | 21,5 | 25 |

Find all tables in IMPERIAL UNITS at our website: www.rubig.com



FORMCLIP

Forged steel shaft, meets all dimensions and minimum values required by DIN 11023; spring made from spring steel wire; galvanized and yellow thick film passivated.



| Size | Order no. | d1 | x | y | l1 | l2 | b1 | b2 |
|--------|-----------|------|----|----|-----|-----|------|----|
| 6x42 | 06303055 | 5,5 | 30 | 30 | 42 | 63 | 13,5 | 18 |
| 8x42 | 06303075 | 7,5 | 30 | 30 | 42 | 63 | 13,5 | 18 |
| 8x62 | 06505075 | 7,5 | 50 | 50 | 62 | 83 | 20 | 19 |
| 10x45 | 06303095 | 9,5 | 30 | 30 | 45 | 62 | 15 | 18 |
| 10x55 | 06404095 | 9,5 | 40 | 40 | 55 | 72 | 15 | 19 |
| 10x65 | 06505095 | 9,5 | 50 | 50 | 65 | 85 | 21,5 | 21 |
| 10x100 | 06101000 | 9,5 | 75 | 65 | 100 | 124 | 25 | 22 |
| 12x45+ | 06303045 | 11,5 | 30 | 30 | 45 | 62 | 15 | 18 |
| 12x55+ | 06404012 | 11,5 | 40 | 40 | 55 | 72 | 15 | 19 |
| 12x65 | 06505012 | 11,5 | 50 | 50 | 65 | 85 | 21,5 | 21 |
| 12x75 | 06606012 | 11,5 | 60 | 60 | 75 | 95 | 21,5 | 22 |
| 12x100 | 06121000 | 11,5 | 75 | 65 | 100 | 124 | 25 | 23 |
| 12x100 | 06121001 | 11,5 | 90 | 55 | 100 | 124 | 25 | 22 |
| 17x75 | 06606016 | 15,5 | 60 | 60 | 75 | 95 | 21,5 | 23 |

www.rubig.com

RUBIG
DIE FORGE



Errors and exceptions omitted. Brochure for exports.



11/2016

We are constantly enlarging and improving our range.
Find news on our website www.rubig.com,
and in our online shop: www.rubig-shop.com

Franz Rübige & Söhne GmbH & Co KG

Mitterhoferstraße 17
4600 Wels
Austria

t +43 (0) 7242 / 47 135 0
f + 43 (0) 7242 / 47 135 2050
st.office@rubig.com