

DIAGNOSTICS MADE EASY

CUBE67 DIAGNOSTIC GATEWAY

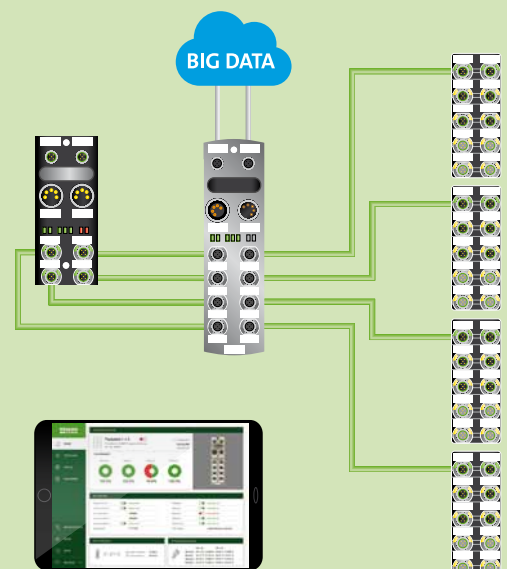
Murrelektronik's Cube fieldbus system offers extensive diagnostic options. A new diagnostic gateway allows Plug & Play access to the data via an Ethernet interface. This solution is easy to implement, provides clear instructions in case of failure, and allows maximum availability of machines.

- **Commissioning engineers** use the diagnostic gateway to examine the topology of the Cube system and detect installation faults at an early stage.
- The **service personnel** of the machine or system builder quickly identifies errors by temporarily integrating the diagnostics gateway. Moreover, this system is a perfect solution for machine acceptance tests. Permanent integration is also a great way to guide, for example the electrician, in the field via remote access.
- The **operator of a machine or system** who implements the diagnostic gateway permanently is able to react to potential problems at an early stage. In the best case scenario, instructions for troubleshooting have already been implemented, allowing the installer to bring the required spare part right with him when he comes for repair.

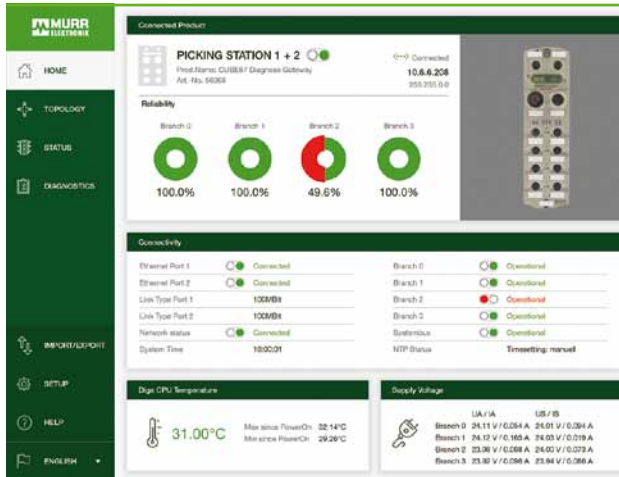
- Diagnostics and topology detection without additional programming
- Easy embedding of the gateway between the Cube bus node and the branches of the Cube installation
- Functions with all Cube bus nodes – of course also with the ones that are already in use (downward compatible)
- Browser and platform independent representation of the Cube topology, the process data and the diagnostic information
- Diagnostic memory (logbook), also for volatile errors
- Module designations and error messages in plain text
- Fieldbus and controls independent



**THE CUBE67 DIAGNOSTIC GATEWAY IS THE
TOOL THAT SPEAKS YOUR LANGUAGE!**

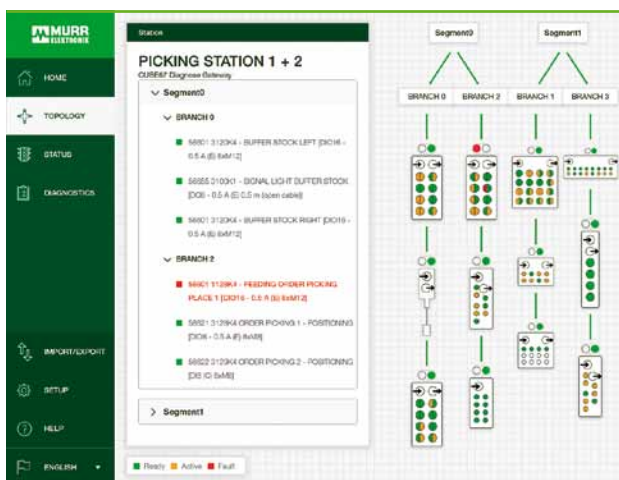


COMPACT



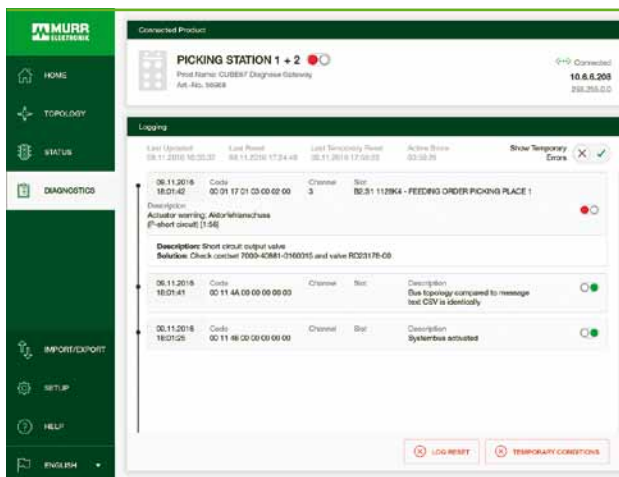
Easy system overview

The user is given an overview of the Cube system and the diagnostic gateway at a glance, for example the connection data, the system voltages and the currents.



Everything at a glance

Clear representation of the system topology, both in tabular and graphic form, showing all process and diagnostic data in their live state.



From diagnostics to a solution!

Detailed diagnostic and system messages, including a precise explanation (as plain text), description of the effects, and information on how to eliminate the error.

Diagnostics made easy!



| Art. No. | Designation |
|-------------------|--|
| 56968 | Cube67 diagnostic gateway |
| 341946 | Cube67 bus node gateway cordset |
| 7000-15041-000000 | Cube67 bus terminating resistor |
| 58627 | Dummy plug M12 (VE = 10 units), with male thread |
| 55384 | Dummy plug 7/8", with male thread |
| 55385 | Dummy plug 7/8", with female thread |