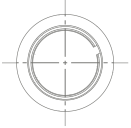


With passion for engineering



We do what we enjoy and what makes sense for us. Our company's vision is to take part in the production of the most modern technical equipment and contribute to the process of bringing it to life. We are a young, dynamically developing Czech company that specializes in the supply of tailor-made machine components produced via machining, sheet metal-shaping and welding. We perform the complete installation of machine assemblies and their parts according to the customer's requirements.

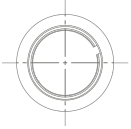
## What you can expect from us

Above all, you can expect perfect service in the areas of machine component supply and the installation of machine assemblies. Together with our partners, we provide high-quality parts produced according to design documentation and the customer's exact needs. We focus on the unit and small-lot production of milled, turned and ground components through outsourcing. We produce welded structures - working with stainless steel is our speciality. We also carry out the mechanical assembly of machines, including hydraulic, pneumatic and linear systems, and electrical components, as the client requires.

## Equipment and services offered:

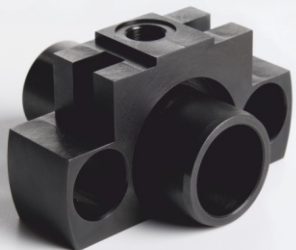
- conventional turning and milling
- CNC turning and milling
- EDM
- grinding
- cutting of sheet metal by laser, water jet and plasma
- burning of sections using a 3D laser
- press braking and bending of sheet metal
- welding using the TIG, MIG and MAG methods
- comprehensive provision of thermal and surface finishes
- measuring
- assembly and testing of functionality





## Keeping quality under control

For us quality is a symbol of success. Particularly in engineering, the term “quality” is discussed very frequently. We not only strive to ensure that our customers obtain their products at the required level of quality, but also dedicate ourselves to achieving great quality in our approach to our clients and the total service which they can expect from us. Products are checked by our specialists with the aid of the most modern measuring devices.

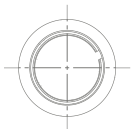


We work with high-quality materials. Most frequently, we use high alloy corrosion-resistant and construction steel, aluminium alloys and plastics. You can find our products in the food processing and healthcare industries, and also in the automotive industry as well as in general engineering.

## Why us:

- we keep our word
- we offer wide portfolio of technologies
- we take care of fast processing of price quotations
- we maintain pleasant and efficient communication with customers; we speak Czech, German and English
- we guarantee short delivery times
- we stick to excellent quality and reliability
- we will provide complete logistics services and also storage if needed





## Would you like to learn more?

Please do not hesitate to get in touch - you will just love cooperating with us!



**MS ProTech s.r.o.**

Radiměř 469  
CZ - 569 07 Radiměř

Tel: +420 605 157 702

E-mail: [info@ms-protech.cz](mailto:info@ms-protech.cz)  
Web: [www.ms-protech.cz](http://www.ms-protech.cz)

**Milan Štoudek**

ředitel společnosti  
managing director