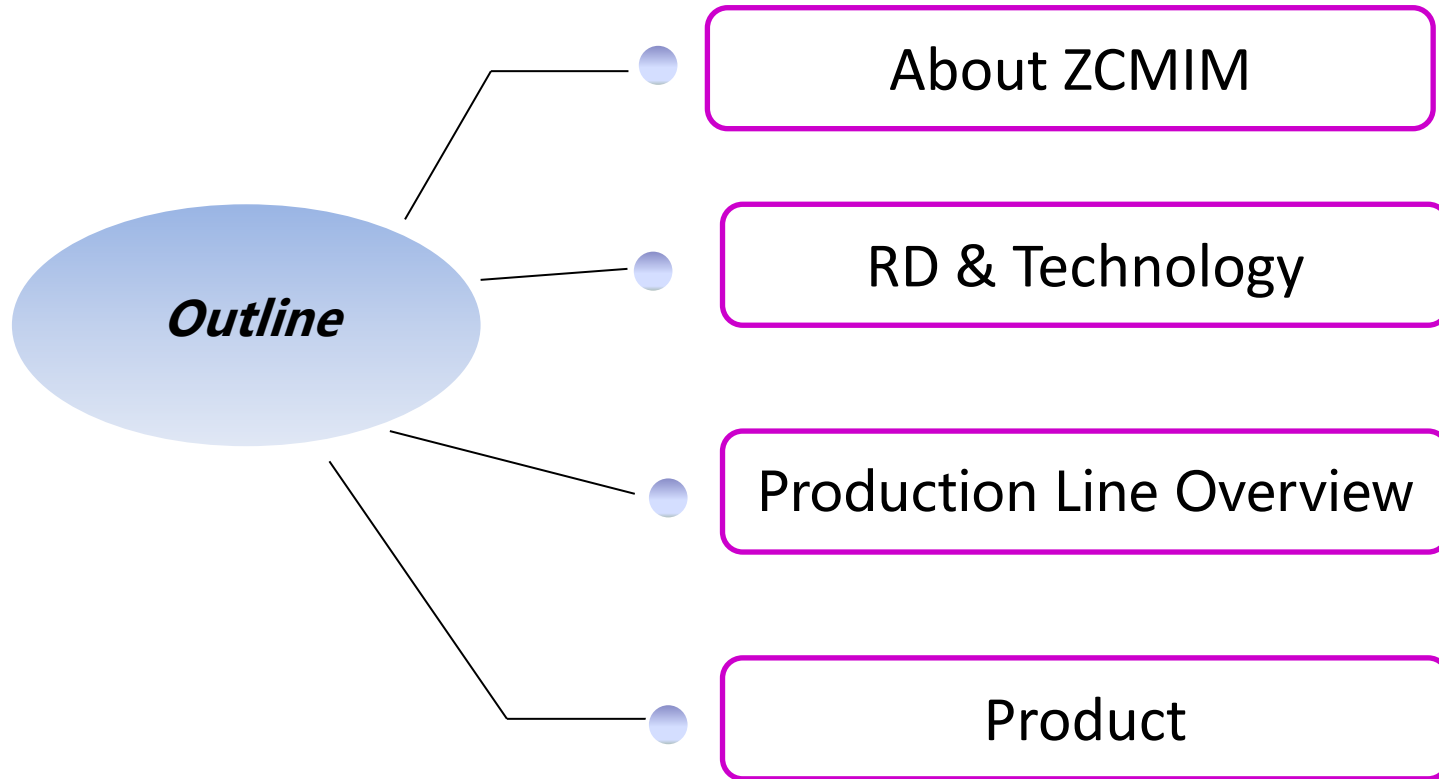


ZCMIM Technology Co .,L td



Company basic

- Establish in year 2007
- Set up shenzhen plant 泰博晟 in 2013
- Set up dongguan plant 腾旭 in 2014
- Total staff: 200
- Certification: ISO 9001/TS16949 /ISO14001

Manufacture facility:

injection machine
debinding furnance
sintering furnance

Post process machine:

shaping machine, lapping machine, polish, brush machine, sand blasting machine, laser etching machine, PVD and coating





TS16949

Certificate of Registration



This is to certify that the Quality Management System of

DONGGUAN TXMT TECH CO., LTD.

Unified Social Credit Code : 91441900314992532P

Operation Address : 2F, Park A, No.522, East Zhen'an Road, Jinxia Community, Changan Town, Dongguan City, Guangdong Province, China

Registered Address : 2F, Park A, No.522, East Zhen'an Road, Jinxia Community, Changan Town, Dongguan City, Guangdong Province, China

applicable to

Production and sales of metal powder injection molding parts

has been assessed and registered by NQA against the provisions of

ISO 9001:2015

This registration is subject to the company maintaining a quality management system, to the above standard, which will be monitored by NQA.

Certified Clients shall accept regular surveillance assessments. The validity of certificates shall be maintained for the positive result of audit.

The information of this certificate can be checked on CNCA's website (www.cnca.gov.cn)

SNQA's website : www.snqa.com.cn

M. Gao
Managing Director

Certificate Number

20171

Date: 09 January 2015

Previous Certificate Expiry: 09 January 2018

Reissue Date: 10 January 2018

Valid Until: 09 January 2021

EAC Code: 17



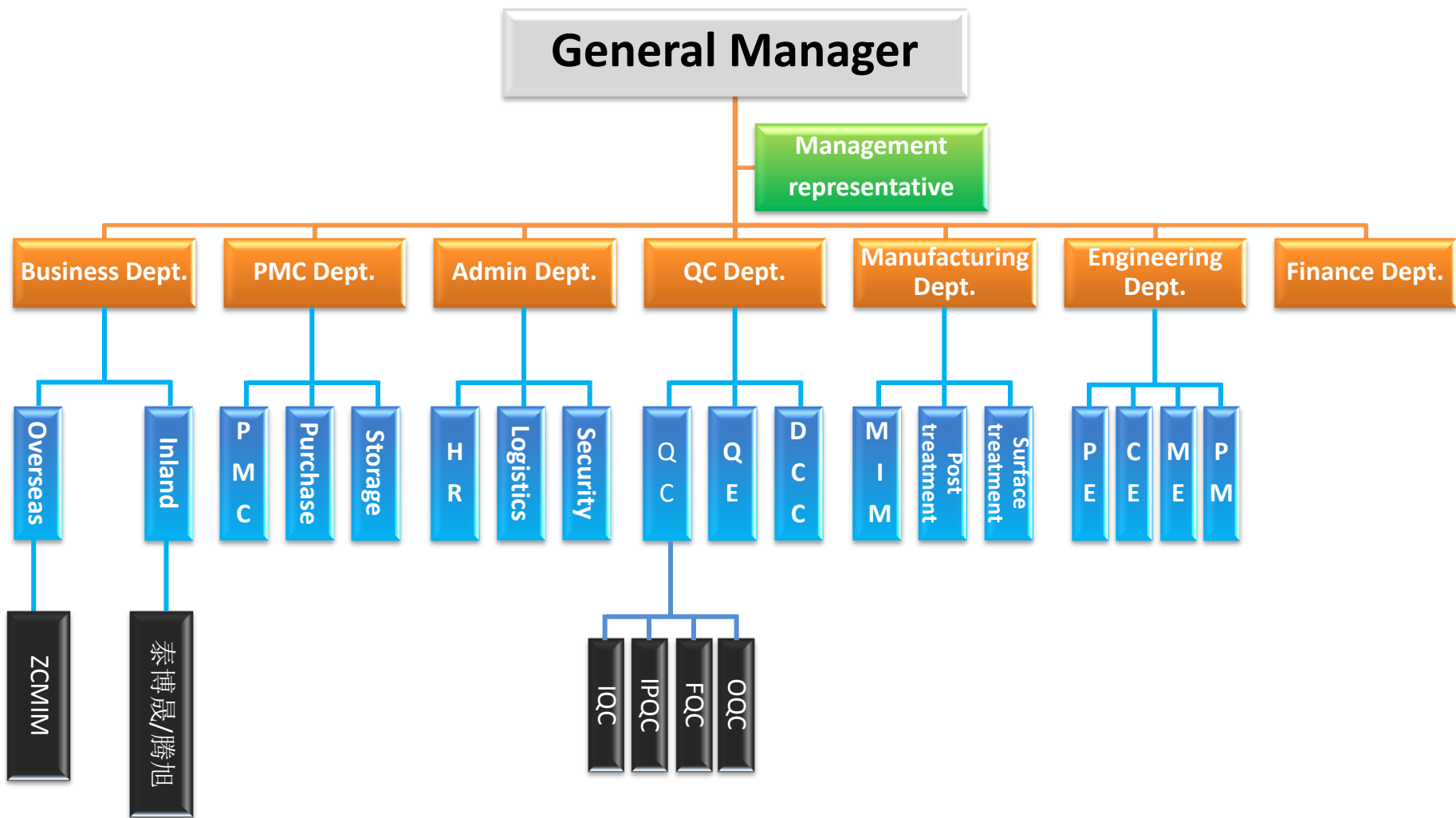
The use of the UKAS Accredited Mark indicates accreditation in respect of Process activities covered by the accreditation certificate number 015 held by NQA. NQA is a trading name of NQA Certification Limited. Registration No 00201752. Registered Office: Vauxhall House, Houghton Hall Park, Houghton Regis, Bedfordshire, LU5 5DQ, UK. This certificate is the property of NQA and must be returned on request.

ISO9001



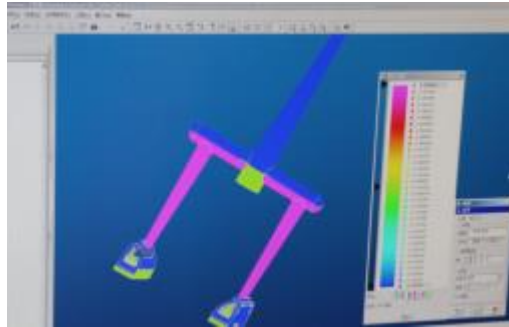
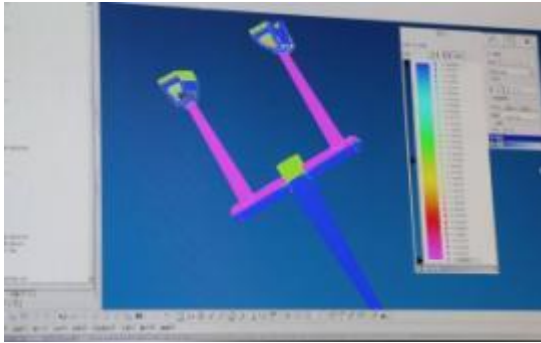
ISO14001

Organization chart



RD& Technology

Engineer Team



Engineers :

- PE(process engineer)
- CE(cost engineer)
- ME(manufacturing engineer)
- PM(project manager)



Total number: 15
Annually Developed 80+ projects

Current Capability & Tolerance

Current Capability

Major Dimension < 30mm
Length /Diameter < 50mm
Wall thickness : 0.3-3.0mm
Weight range : 0.02-100g
Capacity : 500K/M



Tolerance control capability

Dimension	Tolerance
0-5mm	$\pm 0.03\text{mm}$
5-10mm	$\pm 0.05\text{mm}$
10-20mm	$\pm 0.07\text{mm}$
20-50mm	$\pm 0.10\text{mm}$
>50mm	$\pm 0.3 - 0.5\%$

Current Capability & Tolerance

Current Capability

Major Dimension < 200mm
Length /Diameter < 100mm
Wall thickness : 0.3-10mm
Weight range : 0.02-100g
Capacity : 300K/M

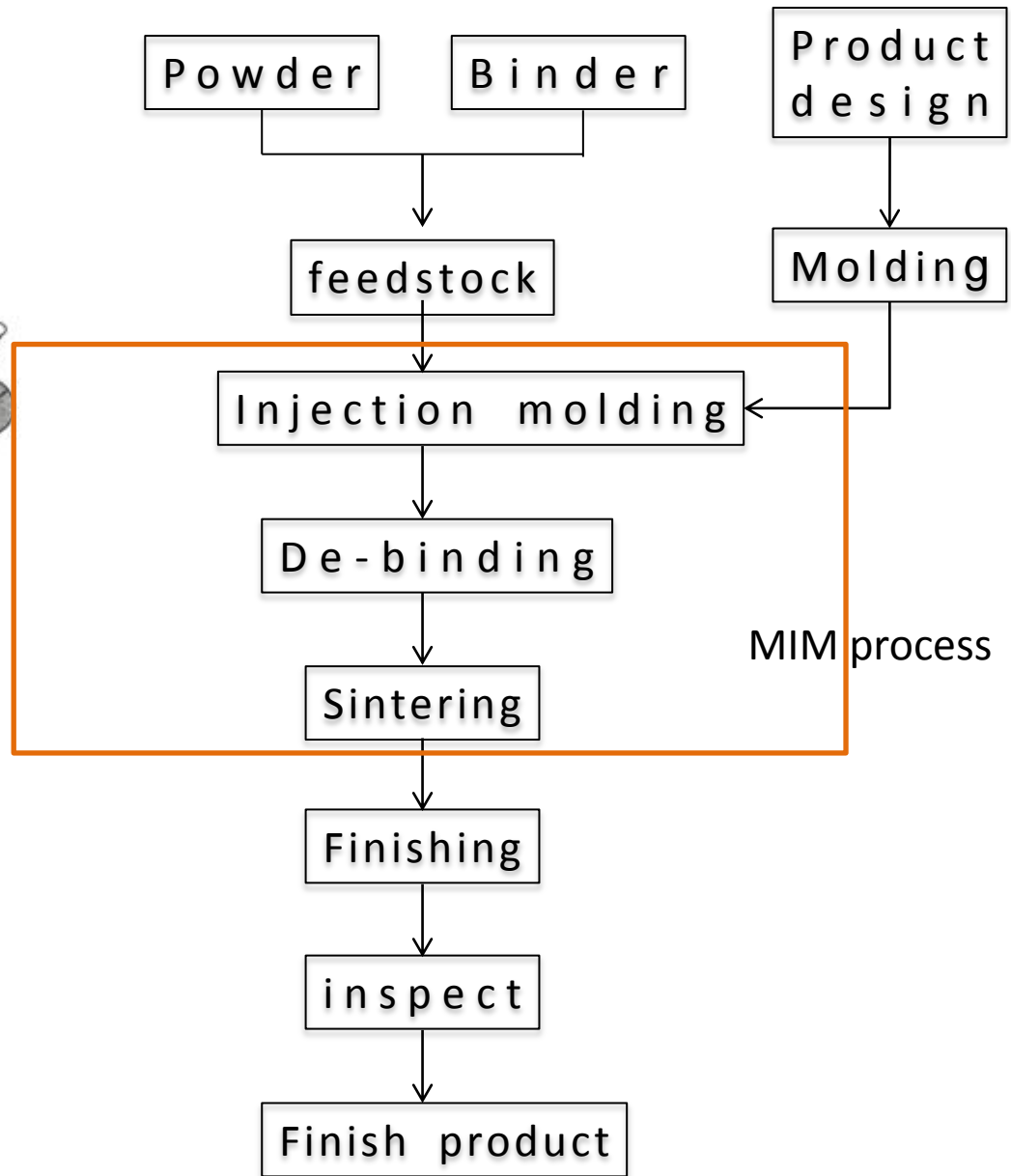
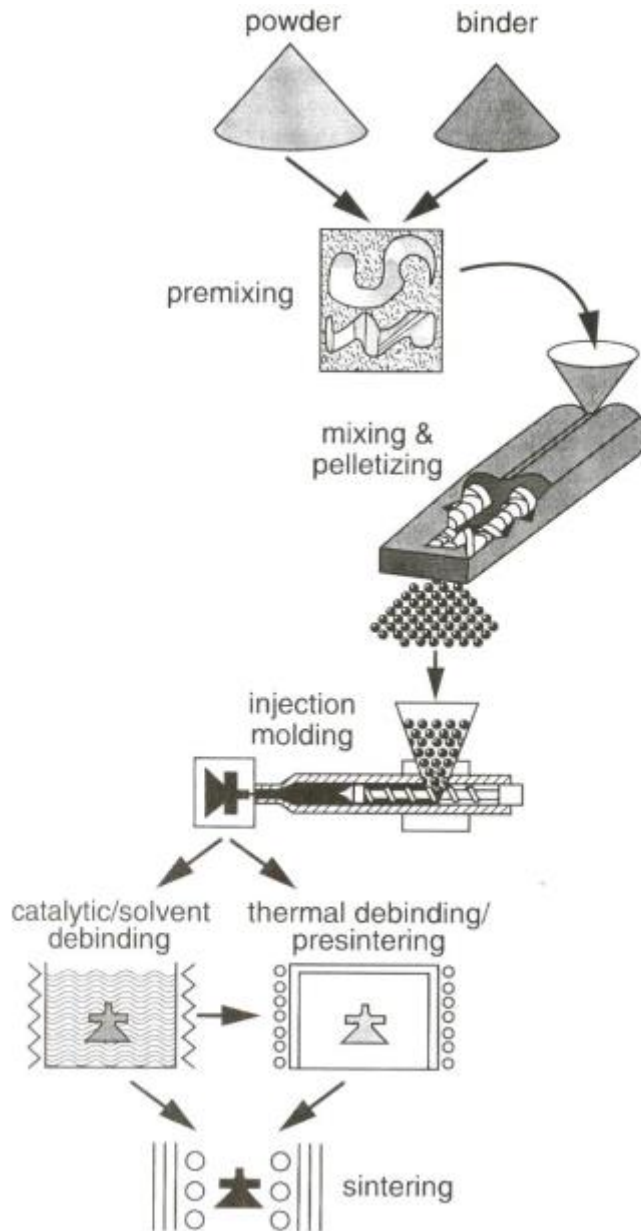


Tolerance control capability

Dimension	Tolerance
0-5mm	$\pm 0.03\text{mm}$
5-10mm	$\pm 0.05\text{mm}$
10-20mm	$\pm 0.07\text{mm}$
20-50mm	$\pm 0.15\text{mm}$
>50mm	$\pm 0.3 - 0.5\%$



The MIM process flow



Workshop view



Injection workshop

Workshop view



De-binding furnace

Workshop view



Sintering furnace

Workshop view



Shaping workshop

Workshop view



Shaping workshop

Workshop view



sand blasting workshop

Workshop view



Magnetic grinding& vibration grinding workshop

PVD Workshop view



Automatic vacuum cleaning line

Workshop view

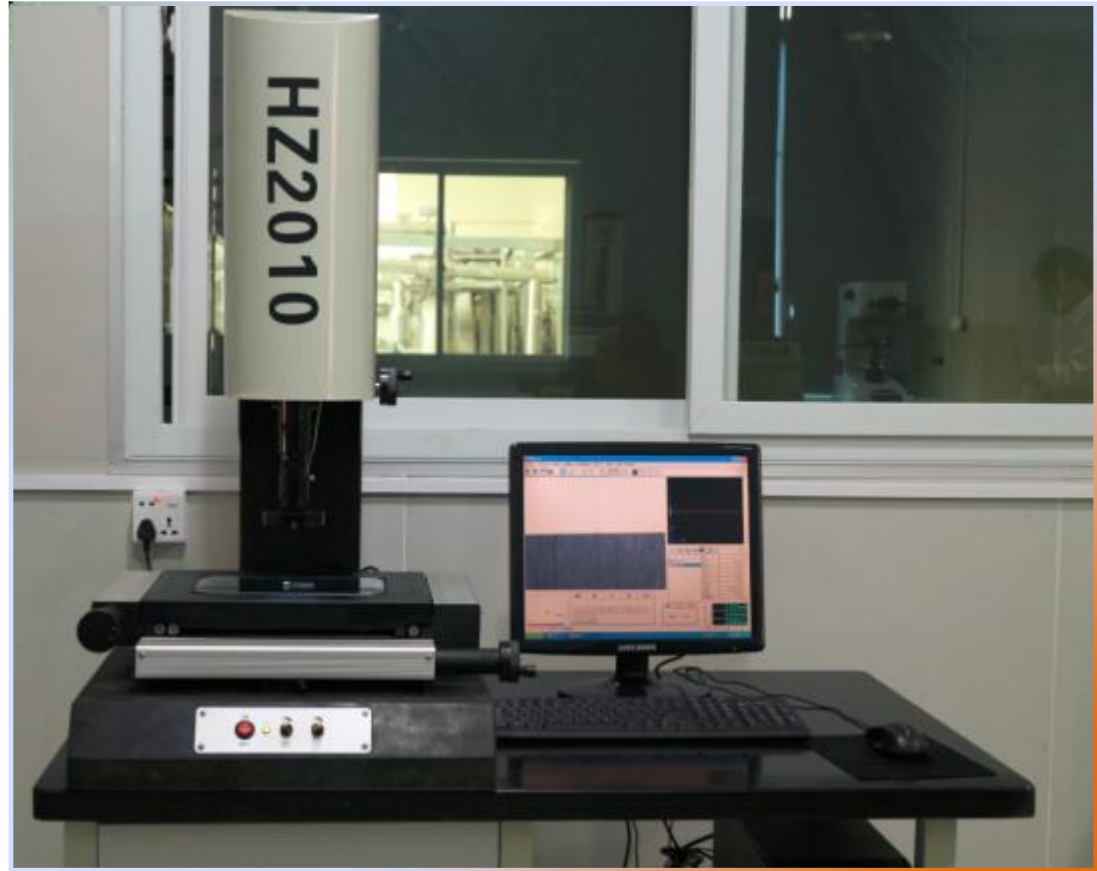


Constant temp drying line

Inspection Equipment



3D measuring instrument

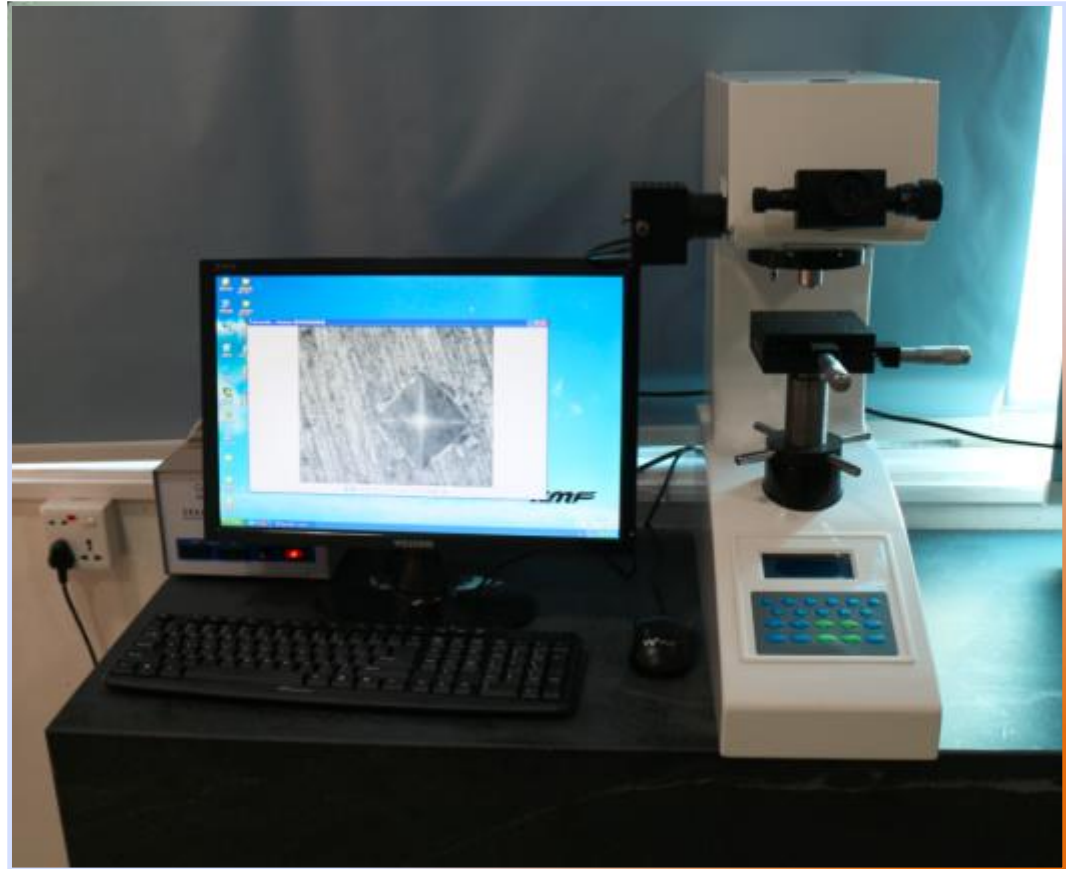


2D measuring instrument

Inspection Equipment



Projector



Hardness tester

Inspection Equipment



Push-pull Gauge



Height Instrument

Products

Smart Wearable Device Parts



Headset Parts



Drone Parts



Various Accessories



Mobile Phone Parts



Auto Parts



Thank you!

No.522 Zhen'An east Road, Chang'An Town,
DongGuan City, Guangdong Province
China

Email: Sales2@zcmim.com

Website: www.zcmim.com
www.zcmimsz.com

Tel: 0755-23020959/85284033

Fax: 0755-85284033

