

>> BigData Monitor

Business Intelligence: in Full HD

Enjoy Complexity

Transparency

To manage lots of data, it's necessary to employ the BigData Monitor. This software enables transparency over all departments and coherence within these. At the same time it provides real-time analysis of the whole company at a single workplace and in Full HD resolution.

Visualization

The BigData Monitor clarifies the current state and history of all corporate processes in real time via rapid consolidation and visualization of all business data. Decision-makers are therefore released from the elaboration of interminable reports.

Pattern recognition

High performance components were especially developed for the BigData Monitor. These elements utilize the capabilities of human brain to recognize patterns within seconds.

Detailed Information

Huge amounts of data, which are compressed to minor space and provide detailed information, evince at first glance problematic developments of single data streams at the timeline and in the space of total data. The cursor provides immediately detailed information at the corresponding, dyed sections.

Minimal System load

Despite very high functionality of complex data amounts, the BigData Monitor guarantees the transition to different display options without loading time: intelligent cache- and storage functions reduce system loads to an absolute minimum level.

Enjoy Complexity

>> Features

In general

Standard software with adjustable parameters in MS-Office-2010-look
ClickOnce-Technology
Standard-BI/OLAP-components like pivot table with chart functions etc.

Problem area analysis

The illustration of values is realized by the size of displayed rectangles (e.g. revenue), by qualified colour value such as contribution margin, by categorization and an explicit object designation.

Filter Functions

Filter conditions can be conveniently defined for arbitrary complexity by using a special filter editor.

Tool tip

By moving the mouse pointer over an object, detailed information will be displayed to each one.

User-Marks and User-Notes

Objects can be marked with a special head line, for instance, „ instant editing”, and are available for defined other users. Also a “Blogging-System” is accessible for continuous messages as well as notes.

Relational Analysis

If there is a noticeable product and the mouse pointer will be moved over it, all other categories (such as subsidiaries, storage locations, suppliers), in which this product isn't contained, will be then displayed straightaway.

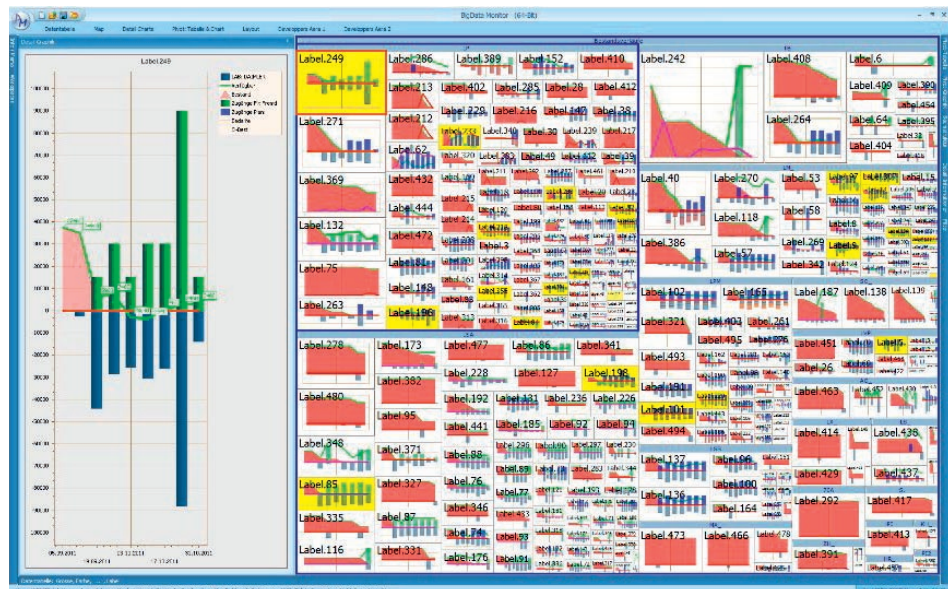
Chart Functions

This function visualizes a certain development on the timeline in a separate detailed chart. Or charts, that present information over the course of time, will be displayed in every single rectangle.

Pivot-Graphic-Function

Changes within tables are shown instantly, as graphic and table are directly connected with each other. A special modus enables the graphical displaying of single rows, columns, cells or a combination of all. All tables and graphics, defined according to this function, can be exported in differing formats (XLS, PDF, JPG, HTML et al.)

Inventory log



Some manufacturers of the automotive industry already count on the BigData Monitor. They deploy it, amongst others, for monitoring call-off orders and transport frequencies between inventory location and assembly area, external transport management as well as inventory management. Furthermore, the BigData Monitor also enables the user to monitor schedule delivery and for deviation analysis between preliminary and actual planning of manufacturing automobiles.



Real-time monitoring of financial market

The BigData Monitor accesses Excel and Access files as well as SQL database which is user defined according to access timing. It also disposes of a certified SAP-Interface. Beyond that, it permits a maximum view on complex data structure and its development over time series at a single work station. The BigData Monitor can be directly started from the cloud or from a network.

The BigData Monitor is equipped with the following import interfaces

- > MS-Office: MS-ACCESS (97-2010), MS-EXCEL (97-2010)
- > SQL-Server: MS-SQL, MySQL, Oracle, DB2, et al.
- > Option: SAP-Interface (certified, SAP-Queries and SAP-BI)
- > Option: TimeLine-Field-Archive (TLFA) for archiving of huge data amounts

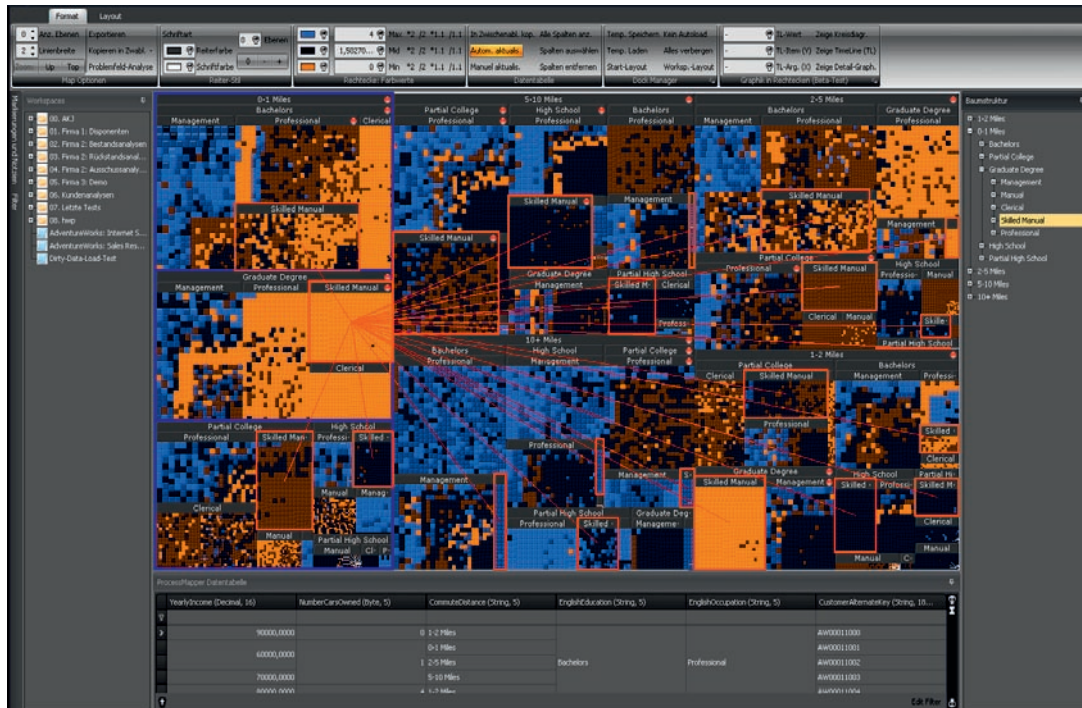
The standard version contains cache- and archiving functions

System prerequisites

- > Pentium 233-MHZ-Prozessor or even faster (>1,5 GHz is recommended)
- > 1 GB RAM (3 GB is recommended)
- > 10 GB memory space on the hard disk
- > Video adapter and monitor with Super VGA 800 x 600 or higher resolution,1280 x 1024 or 1920 x 1080 recommended
- > Microsoft Windows 2000 Professional, XP (all versions), Windows 7 (all versions)
Standard: 32 Bit, Option: 64 Bit for huge data amounts
- > Microsoft .NET 2.0

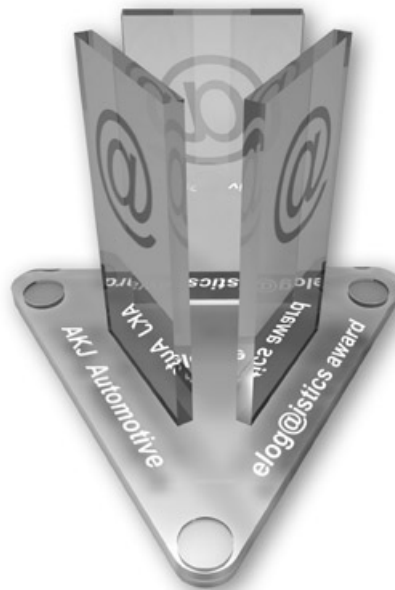
Administration rights are not required for the deployed computer.

Installation, realisation and actualisation take place per ClickOnce-Technology.



eelog@istics award 2011

During the development phase, the BigData Monitor – still having another working title – was already awarded the eelog@istics award 2011 for its innovation content, the achieved benefit and added value for users.



INTEC International GmbH
 Killertalstraße 4
 D-72379 Hechingen

Tel.: +49 (0) 7477 918 94-0
 Fax: +49 (0) 7477 918 94-49

kontakt@intec-international.com
 www.intec-international.de

www.bigdatamonitor.com
 www.intec-connectivity.com