

Engineering, construction and manufacturing using 3D CAD CAM CAE.

## ENGINEERING

You have an idea and we can help you turn it into a production-ready product; at the level of quality you want and the lowest possible cost.

Our engineers work with VisiCAD, a tool that communicates well with the software used by the majority of our customers and is equipped with CAD, CAE and CAM. In addition to its design functionality, we use it to calculate processes and control the machines in our tool shop.

We use a number of different specialist software solutions, such as Bihler CAD, and expert systems for stamping and injection molding.

Our knowledge of tools and manufacturing processes guarantees an optimum result. Where necessary, we bring in external specialists.



## EURO-TECHNIEK'S SPECIALTY

Euro-Techniek specializes in metal forming and plastic injection molding. We help customers develop their products, we design and manufacture tools, and we use dies and molds on our shop floor. From design through to manufacturing, we manage the whole process in-house, which enables us to offer our customers higher quality and shorter lead times. You are, of course, free to choose individual services or products, such as engineering, a die or mold, a product, or a combination thereof.

### Powered by technology

Our company is technology driven, proud of our craftsmanship, knowledge and machine park. To keep overheads low, non-core activities such as HR and IT are mostly outsourced.

Euro-Techniek is ISO 9001, ISO 13485 and ISO/TS 16949 certified. Our cleanroom processing stations are ISO 14644-1 certified. We work according to the cradle-to-cradle philosophy, we have considerably reduced our CO2 emissions, and are SA8000 certified.

### High customer satisfaction

Our customers serve a wide range of sectors, with a focus on automotive and electronics, HVAC, high-tech equipment, green technologies, and medical and life sciences. Our customers value us for our innovative solutions, high quality and exceptional delivery reliability.



*Specialists in metal forming and plastic molding.  
Engineering, tooling and manufacturing.*

Euro-Techniek De Run 4216 Postbus 283 5500 AG Veldhoven The Netherlands  
Tel.: +31-(0)40-253 99 95 Fax: +31-(0)40-253 92 55 Email: info@euro-techniek.nl Website: www.euro-techniek.nl



SPECIALISTS IN METAL FORMING AND PLASTIC MOLDING.  
ENGINEERING, TOOLING AND MANUFACTURING.





Deep drawing parts. As an indication, the smallest part has a diameter of 120 mm.

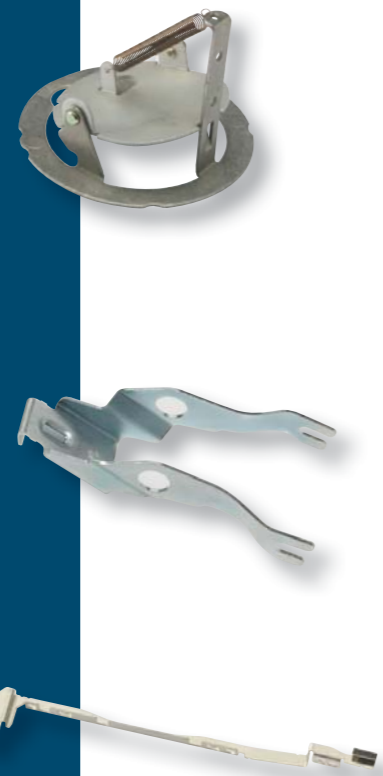
## STAMPING SHOP

High quality and delivery reliability: Our customers in the automotive and electronics, HVAC, high-tech equipment, green technologies, and medical and life sciences sectors expect nothing less, and our stamping shop meets this expectation time and time again.

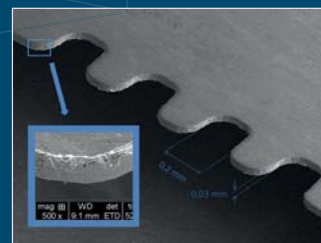
Our high delivery reliability is closely tied to our in-house engineering and tool shop. Potential problems are quickly discovered and resolved.

Our advanced machine park, which boasts eccentric automatic punching machines from 25 to 125 tons, eccentric C-frame presses from 5 to 160 tons and a number of hydraulic presses, allows us to manufacture high-quality products. These presses are used to make products that have a maximum size of a shoe box. We process materials such as steel, light-weight metals, copper (including all their alloys) and exotics.

We can do all kinds of processes after stamping. We can clean, assemble, and (spot) weld products and even package them individually or in kits. We also have a large network of partners for galvanized finishes. Our stamping shop can manufacture products in small to very large batches.



From top to bottom  
Product length 100 mm  
Product length 200 mm  
Product length 60 mm



Punched molybdenum foil,  
30 µm thickness



Part of an automotive mold

## TOOL SHOP

High quality with up to 1 micrometer accuracy - a characteristic our tools are renowned for. We make the components ourselves; we can perform almost all of the processes in-house in a climate-controlled environment.

The components are checked in our conditioned measuring room, which has a vibration-free floor. Among other things, we have a 3D-measuring machine, a linear measuring machine and a variety of hand tools.

When the check has been completed, the toolmaker assembles the tool and submits it to the final test: a stamping or molding run. This is our way of guaranteeing that you always get a top-quality product. To ensure we can maintain this high level, we continuously invest in machines and employee training.

In addition to tools, we also make high-precision components and/or assemblies in small batches.



Milled part of a mold.  
Mill 100 µm



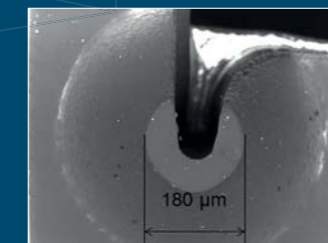
Molded parts. As an indication, the largest part has a length of 50 mm.

## INJECTION MOLDING SHOP

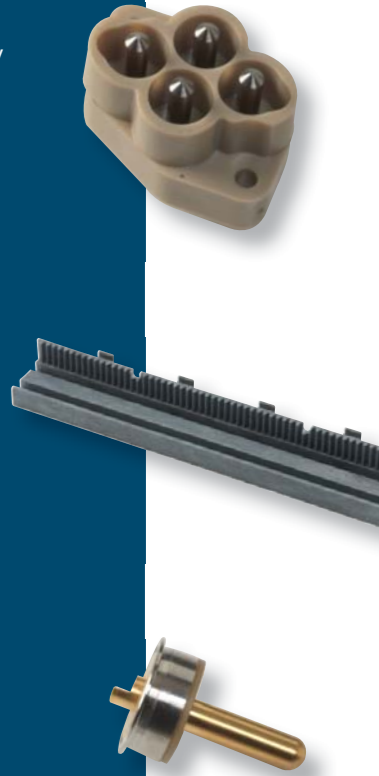
Our injection molding shop can meet almost any demand. We have horizontal and vertical machines with closing forces up to 100 tons. We can work manually or fully automatically, and a number of rooms are ISO class 8 dust-free with microbiological monitoring.

Wide diversity, one result: high-quality products with extremely small tolerances. The products have a maximum size of a handheld device, and we do not shy away from 'tricky' materials: here too we have extensive in-house expertise. And in stock, we carry over 50 different optical qualities, over 50 different medical grades and over 100 engineering grades. If desired, we can provide a product with metal, ceramic or magnetic inserts.

Euro-Techniek can manufacture products in small (few units) to very large batches (millions of units). We perform test injection moldings and we run tests for knowledge institutes. If desired, we can also assemble and package your product.



Detail of a molded part



From top to bottom  
Product length 30 mm  
Product length 60 mm  
Product length 30 mm