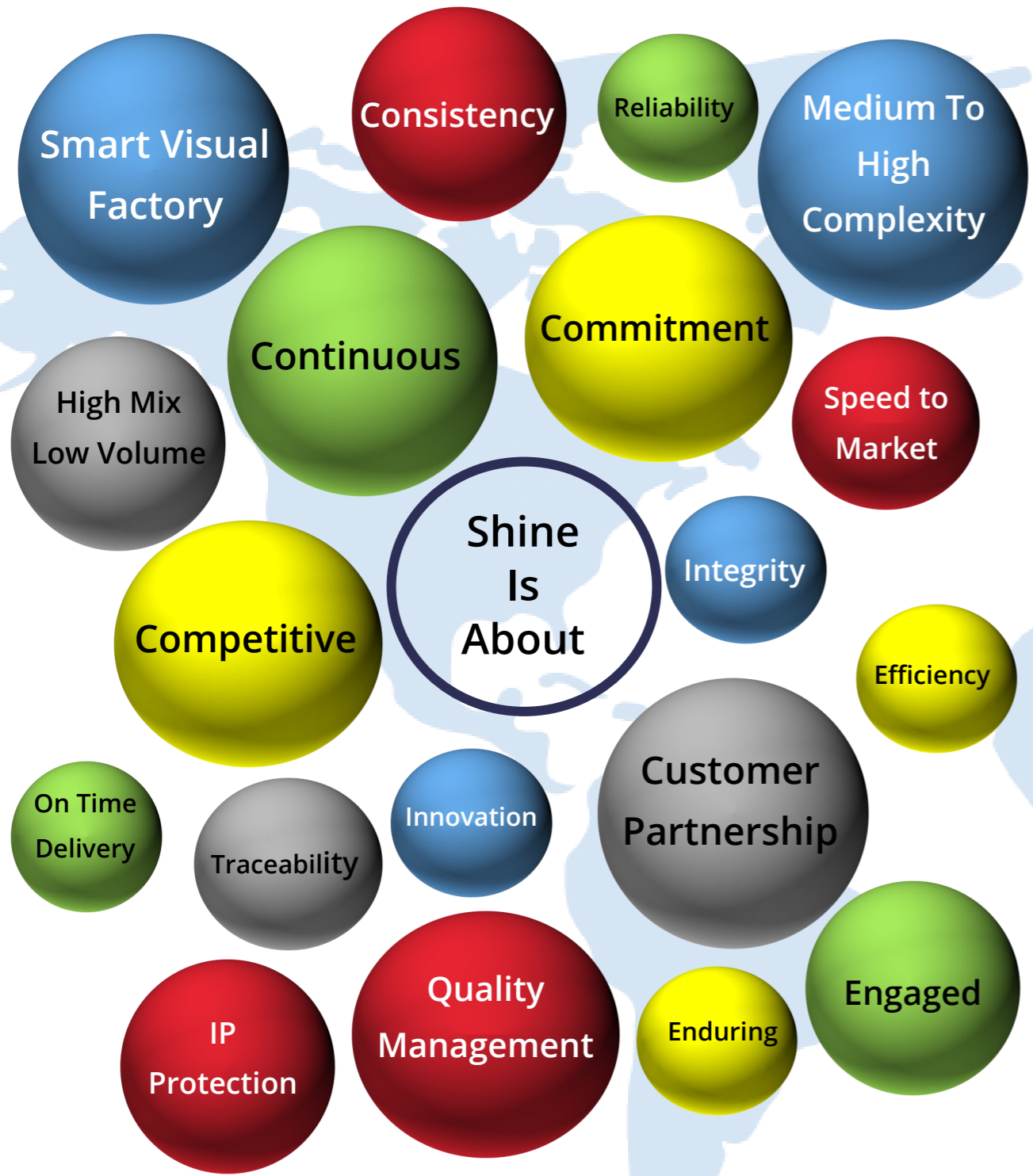


SHINE PRECISION

Taking Precision Engineering Further, Together™



www.shineprecision.com

a Singapore company

*Contact us now, we are here for you.
Let us help you exceed your expectations*

Shine Precision Engineering Pte Ltd

Address: 40 Lok Yang Way, Singapore 628643
Telephone: +65 6268 6188 Facsimile: +65 6266 5739
Email: sales@shineprecision.com

Scan for our contact



MANUFACTURING
PRECISION COMPONENTS
FROM CONCEPT TO DELIVERY

About Us

Founded in 1989, Shine Precision Engineering with its visionary leadership & endurance has grown from strength to strength.

From a single machine job shop, Shine evolved rapidly into an advanced engineering business complete with state-of-the-art precision machining & automated quality inspection equipment, highly engaged staff & robust quality work processes.



To date, we are proud to count some of the most prestigious names in the medical, aerospace, semiconductor, optic, oil & gas industries as our valued clients.

Value Added Services (VAS)

With our VAS, we have the full flexibility to respond to your every need in quick time. These include:

- End-to-End Supply Chain
- Design/Engineering Support
- Full Suite Inspection Tooling
- CMM Inspection
- Turn-key Assembly
- Test Data Report
- Rapid Prototyping
- Precision Machining
- Fabrication

Secondary Operations – Heat Treatment, Surface Finishes, Polishing, Painting, Leak Testing, Bonding, Laser Engraving, Investment Casting, Secondary Machining of Castings, Customized Packaging, etc.

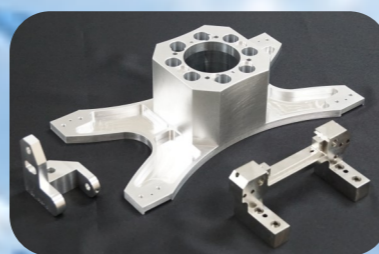
A Forward Future Company



Shine leverages on technology, innovation, collaboration, quality & service excellence to meet and exceed customer expectations always.

By embarking on Industry 4.0, we are committed to sustained investments in advanced technologies, new equipment, hiring & developing exceptional talents thus keeping ourselves at the forefront of global trends.

Capabilities & Services



We have a full spectrum precision manufacturing capabilities, integrated systems and quality processes. We provide our customers with one-stop support and leverage best practices to ensure maximum yield & on-time delivery at a competitive cost.

Some of our machining capabilities include 2, 3, 4, 5 and 6 Axis CNC Machining, EDM, Wire-cut & Grinding.

We are strong in high-mix-low-volume, mid-to-high complexity precision manufacturing for a multitude of ferrous and non ferrous materials

- Aluminium
- Titanium
- Inconel
- Stainless Steel
- Copper
- Engineering Plastic

Quality Assurance

Shine Precision is committed to quality at every phase of our production. To this end, we have achieved both ISO 9001:2008 & AS9100D certifications.

With AS9100D certification, our quality management system meets additional stringent requirements for quality standards for the aviation industry (Including defense industry).



Contact us now, we are here for you. Let us help you exceed your expectations

+65 6268 6188 * sales@shineprecision.com