



where the smile longer



www.omnitecheng.com

Omnitech Engineering

The Complete Solution of
Engineering Products



where the smile longer



Company info

COMPANY INFO

Omnitech Engineering has been built engineering excellence.. crafted through unstinted dedication to quality, innovation and a constant objectives to serve the global market.

The Company was started with clear objectives of customer's requirement of quality, cost, timely delivery and responsiveness. Our location of factory is being one of lowest cost region of the India puts Omnitech in unique position to offer uncompromising quality at an outstanding value.

Currently, We offer a One-stop shop for Turned Parts & Machined parts to our global customers, with standards that meet global quality requirements and move towards greater engineering excellence.



- Company is established in 2004-05 with clear objectives to serve global customer in Specifically for Turned & Machined parts
- Plot Area :- 11000 Sq. Mts.(118342 Sq. Ft)
- Built up Area of 24000 Sq. Ft & New expansion area of 32000 Sq. Ft
- Directors are Graduate in Mechanical Engineering with exhaustive experience
- Present capacity :- 160K Part per month based on parts size & volume
- Spare Capacity :- 35 % of present capacity to meet customer's growing demand
- Omnitech has been approved for Registered Export House as manufacture
- Major customers are located in US, Europe
- Credit & Performance rating – SE 2A- High Performance Capability & High Financial Strength
- ISO 9001: 2008 from TUV- SUD
- Equipped with 19 CNC Machines & 52 Conventional Machines
- Revenue (2012-2013F): 18.1 Cr INR
- Core Competency - Milling 30%, Turning 55% , Turn-Mill 15% from Bar stock & Forging
- Materials – Stainless Steel 14%, Carbon Steel 70% & Non Ferrous 16%
- Export Business – 71%
- No. of Employees / Engineers – 139 / 38

ISO 9001:2008

Certified Company

QUALITY POLICY :

We at Omnitech Engineering are committed to meet customer's requirements through continual improvement of our quality management systems. We shall sustain organizational excellence through visionary leadership and innovative efforts.

"QUALITY IS NOT AN ACT, IT IS A HABIT"

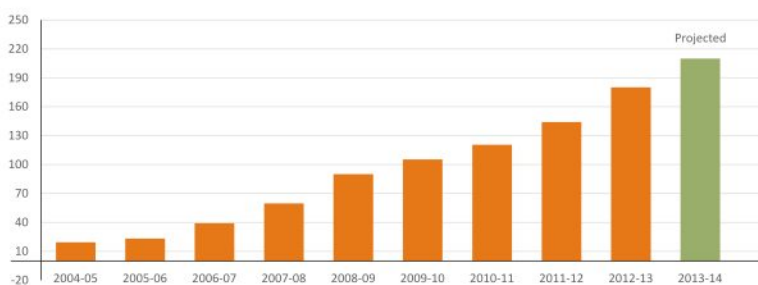


VISION STATEMENT :

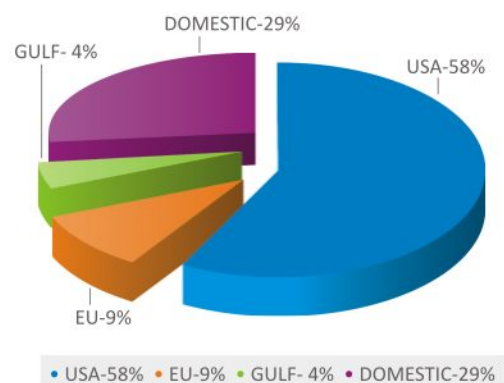
"Through the integrated development of our team, to grow as a preferred manufacturing solution service to selected markets, anticipating rapidly changing customer needs and responding with world class performance."

GROWTH SPECTRUM :

TURNOVER (Rs. in Millions)



PRESENT SALES SPECTRUM :





where the smile longer



Manufacturing Facility

CNC Machine shop :

Omnitech's manufacturing capabilities encompass the entire gamut of precision engineering products. The synthesis of best-of-the breed machinery, technically qualified professionals and a quality driven management policy transforms the most complex engineering drawing into a high quality product.

The Machine shop layout has been designed to suit both the line concept for mass production as well as batch production. Omnitech offers an array of CNC Turning Centres, CNC Vertical Machining Centres with 4th Axis facilities along with the latest control systems for production jobs.



CNC MACHINERIES		
Machineries	Qty	Capacity
CNC Turning Center	11	Max Turning Dia : 445 mm
Model : DX-200		Max turn Length : 500 mm
Make : Jyoti Cnc Automation Pvt Ltd.		Max Bar Dia : 52 mm
		Turret Station : 08 Nos.
CNC Turning Center	01	Max Turning Dia : 470 mm
Model : DX-250		Max turn Length : 700 mm
Make : Jyoti Cnc Automation Pvt Ltd.		Max Bar Dia : 52 mm
		Turret Station : 08 Nos.
CNC Turning Center	01	Max Turning Dia : 200 mm
Model : DX-150		Max turn Length : 400 mm
Make : Jyoti Cnc Automation Pvt Ltd.		Max Bar Dia : 45 mm
		Turret Station : 08 Nos.
CNC Vertical Machining Center	01	Travel- X - 1000mm
Model : VMC-1050		Travel- Y - 500mm
Make : Jyoti Cnc Automation Pvt Ltd.		Travel- Z - 500 mm
		No.of.Tool Capacity : 20
CNC Vertical Machining Center	01	Travel- X - 800mm
Model : VMC-850		Travel- Y - 500mm
Make : Jyoti Cnc Automation Pvt Ltd.		Travel- Z - 500 mm
		No.of.Tool Capacity : 20
CNC Vertical Machining Center	03	Travel- X - 600mm
Model : VMC-640		Travel- Y - 400mm
Make : Jyoti Cnc Automation Pvt Ltd.		Travel- Z - 400mm
		No.of.Tool Capacity : 20
CNC Vertical Machining Center	01	Travel- X - 400mm
Model : VMC-430		Travel- Y - 300mm
Make : Jyoti Cnc Automation Pvt Ltd.		Travel- Z - 300mm
		No.of.Tool Capacity : 12
Rotary Table (4th Axis in VMC)	03	Center Height of Table : 250mm
		Load Carrying Capacity : 150 Kg.



CONVENTIONAL MACHINERIES		
Machineries	Qty	Capacity
Horizontal Milling Machine	01	Stroke Size : 600 X 500 X 500 Spindel Power 7.5 Hp
Heavy Duty Lath Machine	07	Turning Dia - 500mm Turning Length -3000mm
Light Duty Lath Machine	17	Turning Dia - 200 mm Turning Length -450mm
Radial Drill	03	Power Capacity -2.5 Hp Max. Drill Dia 38.1
Pillar Drill	18	Power Capacity -1.5 Hp Max. Drill Dia 25.4
Mfg Welding Machine	02	Power Capacity -30 Amps 25/30 Step Voltage Selection
Tapping Machines	04	Max. Tap Size -25mm

Conventional Machine Shop :

Omnitech is also equipped with full fledged conventional machine shop with Grinding machines, Milling machines, Lathe, Drills & tapping machines etc. to take care of its tooling, fixtures and to have cost effective machining for operations not requiring CNC machines.

Manufacturing Process supports :-

1. Ability to build up manufacturing process fixtures & special tools in house with strong back up of designing.
2. New product design and development time is minimum as proactive approach of well experienced engineers.



Productivity enhancement program

EMPLOYEE OF THE MONTH OCT. 13 --

NAME :

Ram Gulam Gupta

DESIGNATION :

CNC TURNING INCHARGE

DEPARTMENT :

PRODUCTION Dept.

REASON FOR EMPLOYEE OF MONTH --

EFFECTIVE IMPLEMENT OF KAIZEN



We, at Omnitech implemented,

1. **KAIZEN**
2. **PPAP**(Up-to Level 3)
3. **5S**



where the smile longer



Product Range



These products are made of
Below input raw material :

1) Bar Stock :-

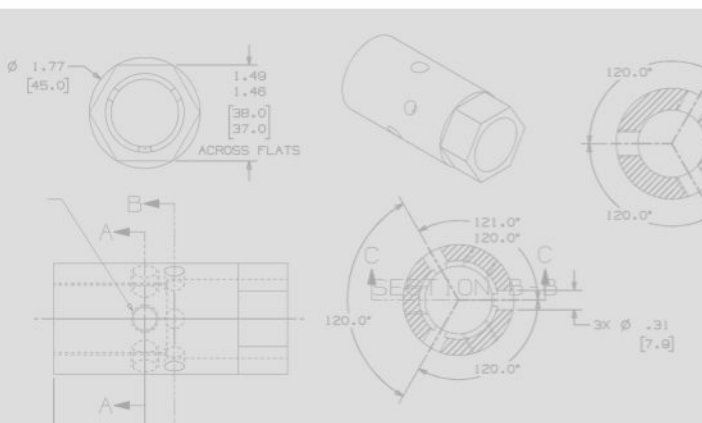
- Round up-to Dia 350mm
- Hexagonal up-to 110mm

2) Forgings :-

- Open Die- up-to 180 Kgs
- Closed Die- up-to 80 Kgs
- Ring Rolling - upto 150 Kgs & Diameter 1000mm

3) Castings :-

Process - Investment castings,
Sand, Shell Molded.





Mostly used Material Grades :

Low & Medium carbon steel(AISI 1018, 1020, 1040, 1045 etc.)

Alloy steel(AISI 4140, 4340, 8620, 1541, 8620, 20MnCr5 etc.)

Stainless steel(AISI 304, 303, 316, 400 Series & 17-4 Ph etc.)

Non Ferrous Metal(Alluminium, Brass, Alluminium Bronze & Gun metal etc.)

Raw Material Certification:

PED 97/23/EC and AD2000 or equivalent certifications from the source, wherever applicable.

We work not only to Produce but to give value to time...



QUALITY CONTROL

Being as an ISO 9001: 2008 accredited organization, We achieve high quality standards through in-house measuring systems with a well equipped Standards Room that include :

- Co-ordinate Measuring Machine with 0.1 Micron Resolution- Mitutoyo
- Micro Height Master with 1 Micron Resolution - Mitutoyo
- Digi Profile Projector 400E with 1 Micron Linear and 1 second rotational Resolution - Mitutoyo.
- Roughness tester, hardness tester and high precision gauges.

Highly skilled technicians with a ZEST for quality backed by cutting edge technology form the bedrock of Omnitech's quality driven design and manufacturing enterprise.

Quality Technique(7QC Tools) Followed :-

1. 8D
2. Why-Why Analysis
3. APQP
4. PFMEA
5. SPC
6. MSA
7. PARETO Analysis



CMM Model :- CRYSTA-Apex S7106(Mitutoyo)

Measuring Range :- X Axis - 705mm
Y Axis - 1005mm
Z Axis - 605 mm

Resolution: 0.1 μ m

Software :- MCOSMOS-ICNC

Scanpak (incl. transpak) Scanning Module CNC



We, at Omnitech Believe

"Do it Right, the 1st time and Every time."

Quality program

EMPLOYEE OF THE MONTH OCT. 13 --

NAME :

Ashish Bhadresha

DESIGNATION :

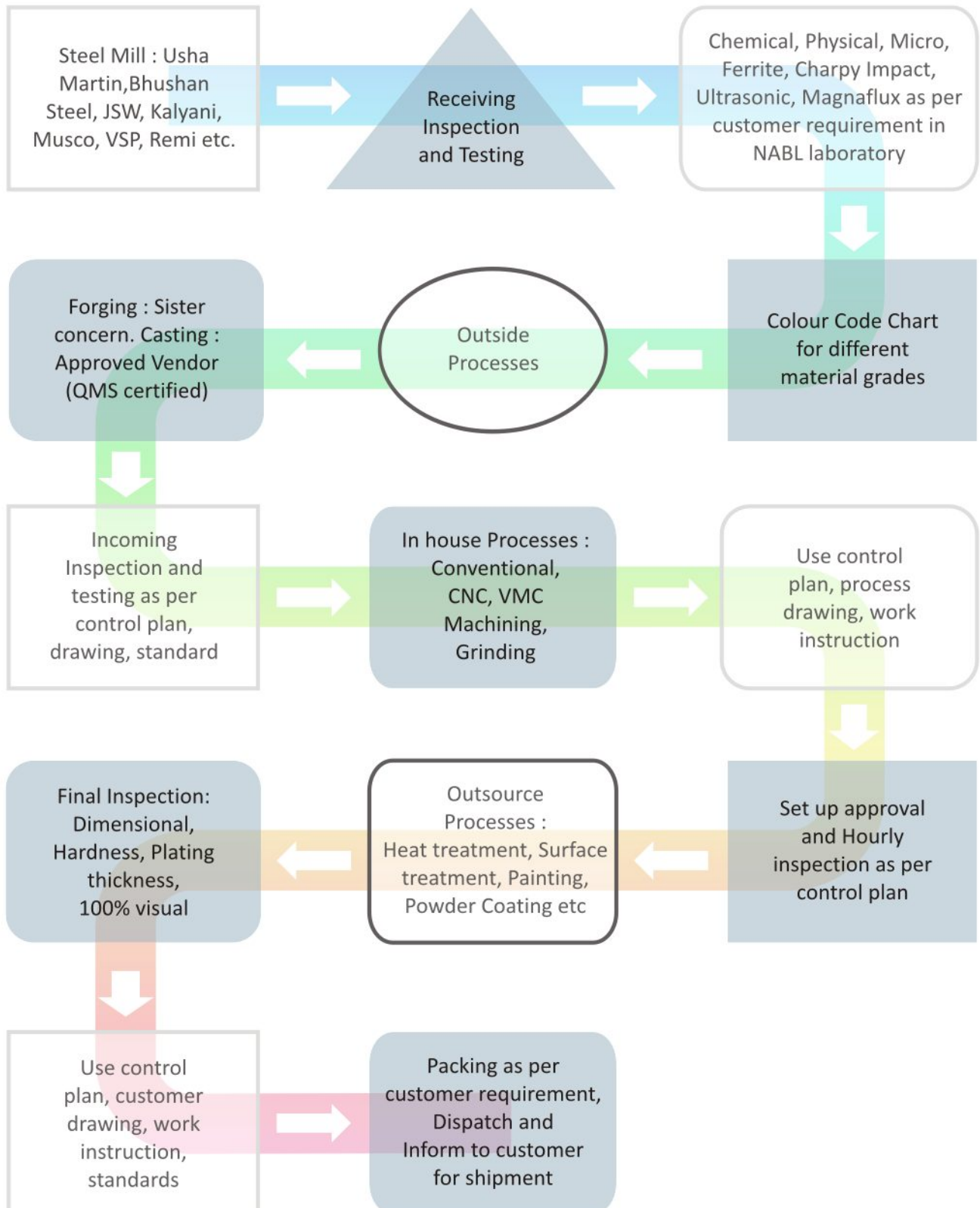
Q. C. Manager

DEPARTMENT :

Q. C. Dept.

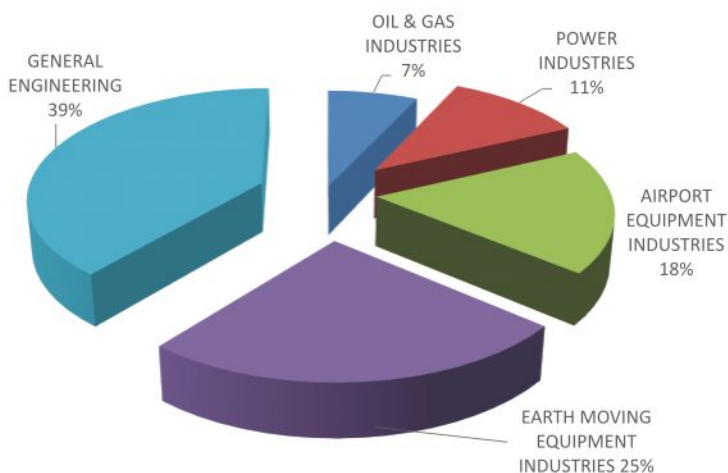
REASON FOR EMPLOYEE OF MONTH --
REJECTION CONTROL SUGGESTION





Why Omnitech ???

- International quality products at a competitive price
- Lean, Flat and Focused Organization
- Integrated ERP system for all major functions
- Maintains full Lot Traceability through the Job card system
- Prompt customer response with minimal tool development lead time.
- In-house Tool-room facility
- Strict adherence to delivery schedules
- Forging is available with our sister concerns.
- Localise vendor base for Casting & other input raw material
- We are at low cost region of India.
- Due to Major business (59%) is in USA & 12 % in Europe, thus fully aware of International Business culture and requirement
- Believes in Latest Technology – Brand New Machines and Equipments & updated Information
- Management fully involved
- Raw Material Inventory of over 200 MT of Round and Hex Bars to offer Quick Deliveries
- Inventory programs offers like JIT/KANBAN etc.
- Customer end rejection controlled within 400 PPM.



Future Plan :-

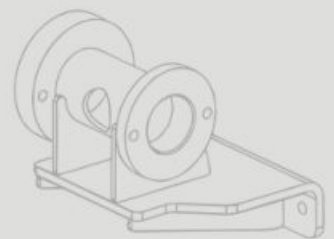
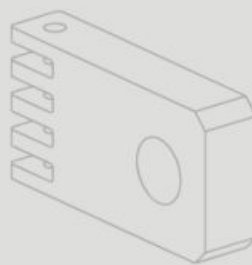
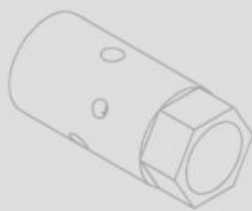
- Immediate Area of Construction - 32000 Sq. Ft
- New 8 Nos. CNC Turning Centres, 2 Nos. of Vertical Machining Centres & 2 Nos. Turn Mill Centres to be installed.
- To achieve sales turnover more than 50 Crores by 2020.
- To develop dedicated assembly shop
- Ware housing planning in US & EU Countries by 2020.

To cater to expanding markets Omnitech is looking at strategic Joint Venture partnerships with quality engineering companies in Europe & USA.





where the smile longer



Omnitech Engineering

G-1823, Gate No.3 Near Kadvani Forging, Lodhika G.I.D.C.

Village : Metoda. Dist. Rajkot - 360 021 (Gujarat) India.

Phone : +91 2827 287637 **Fax :** +91 2827 287638

Mobile : +91 98256 17375

E-mail : info@omnitecheng.com,
uday@omnitecheng.com

Web : www.omnitecheng.com