



where the smile longer

Omnitech Brief Presentation





where the smile longer

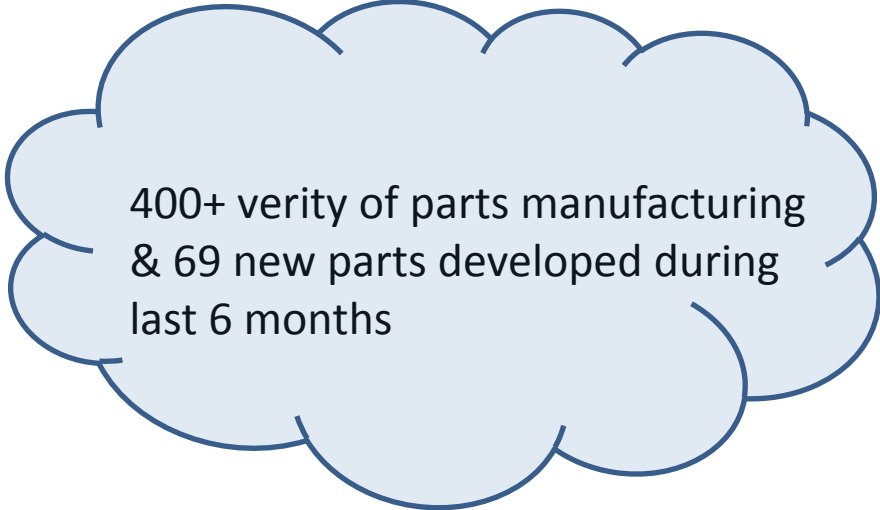
- Company is established in 2004-05 with clear objectives to serve global customer in Specifically for Machined parts
- Directors are Graduate in Mechanical Engineering with exhaustive experience
- Currently running with 16 hrs. in a day in 2 shifts
- Omnitech has been approved for Registered Export House as manufacture
- Major customers are located in US and Europe
- Credit & Performance rating – SE 2A- High Performance Capability & High Financial strength
- ISO 9001: 2008 from TUV- SUD
- Present Facility area 28000 Sq. Ft, New expansion area 966000 Sq. Ft
- Located in Rajkot, Gujarat which is one of low cost region of the India
- Equipped with 24 CNC Machines & 13 conventional machines



where the smile longer

Summary

- Revenue (2013-2014F): 3.14 Million Euro
- Core Competency - Milling 30%, Turning 55% , Turn-Mill 15% from Bar Stock
- Materials – Stainless Steel 14%, Carbon Steel 70% & Non Ferrous 16%
- Export Markets - US, Denmark.
- Export Business – 69 %
- No. of Employees / Engineers – 90 / 28



400+ verity of parts manufacturing
& 69 new parts developed during
last 6 months



where the smile longer

- Quality Policy - We at Omnitech Engineering are committed to meet customer's requirements through continual improvement of our quality management systems. We shall sustain organizational excellence through visionary leadership and innovative efforts.
- Our delivery performance is 97.8 % in FY -2013-14.
- Presently we are providing KANBAN to ABB for 3 products. We can also extend Inventory programs based on the requirement and business volumes
- We works on cost reduction programs by doing the VA / VE
- Modeling software - Pro-E – Crio
- Good with PPAP Level 3 requirements



where the smile longer

Core Purpose

“To provide competitive solutions thereby enrich lives of Individuals”

Core Values

Quality

To take personal responsibility

Continuous Improvements

Customer First

BHAG(Big Hairy Audacious Goal)

“To become 6.75 Million Euro company by 2019.”



where the smile longer

Core Strengths

- Faster in sample development and capable to ramp-up production at less time
- Globally most competitive for engineered machined components and assemblies
- CNC machining of components - qty. 100 to 10,000 pcs. each, per month.
- Machining centers accuracy - up to 10 microns
- Turning centers - 10 microns
- Surface and center less grinding - 2 microns
- In-house design and manufacture of machining & inspection fixtures
- Creative ideas for productivity improvements a norm



where the smile longer

Machine shop





where the smile longer

Some of measuring equipment photographs



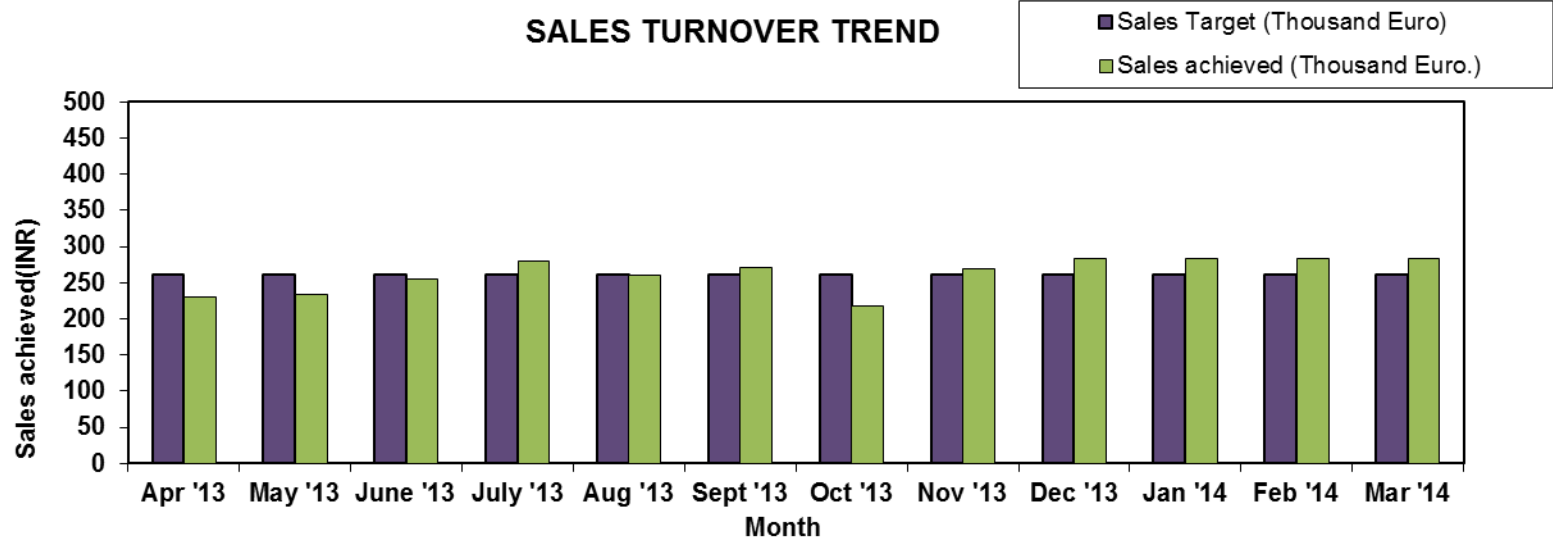


where the smile longer

SALES TURNOVER

Month	Apr '13	May '13	June '13	July '13	Aug '13	Sept '13	Oct '13	Nov '13	Dec '13	Jan '14	Feb '14	Mar '14
Sales Target (Thousand Euro)	261.66	261.66	261.66	261.66	261.66	261.66	261.66	261.66	261.66	261.66	261.66	261.66
Sales achieved (Thousand Euro.)	230	232.8	255	280.4	259.54	270.9	218.29	268.9	282.4	282.9	283.41	282.89
Utilization %	88%	89%	97%	107%	99%	104%	83%	103%	108%	108%	108%	108%

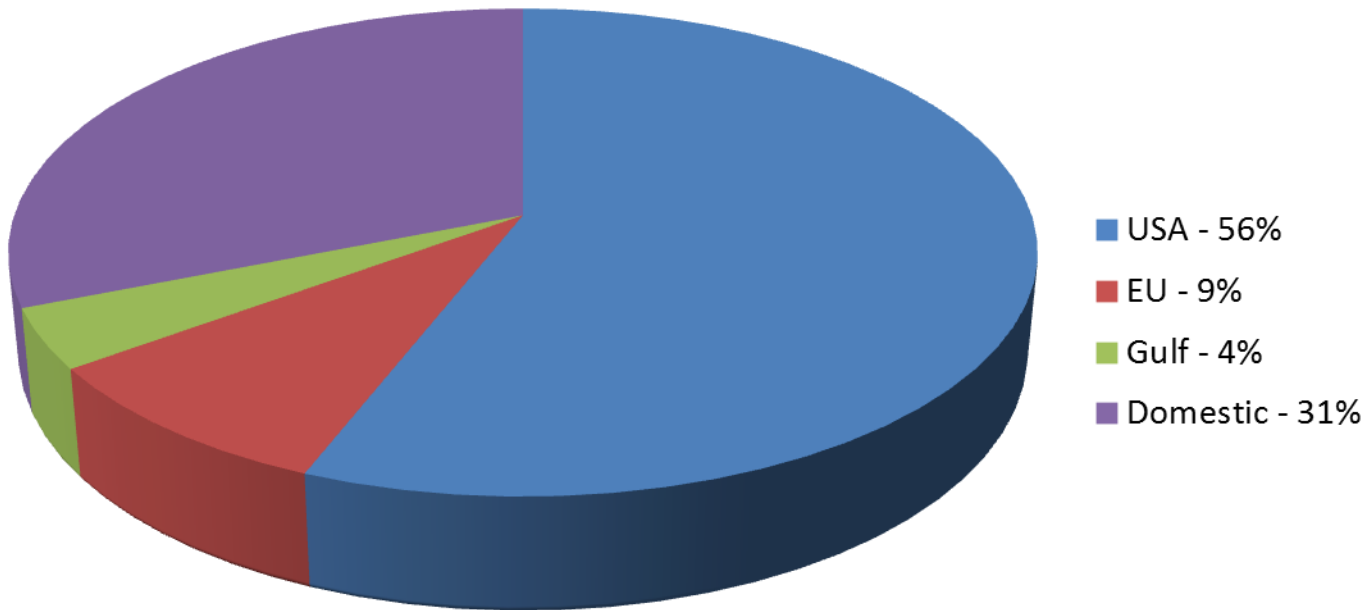
SALES TURNOVER TREND





where the smile longer

Present sales ratio





where the smile longer

Manufacturing Process Supports

- Ability to build up manufacturing process fixtures & special tools in house with strong back up of designing.
- New product design and development time is minimum as protective approach of well experienced engineers.





where the smile longer

Productivity enhancement program

EMPLOYEE OF THE MONTH OCT. 13 --

NAME :

Ram Gulam Gupta

DESIGNATION :

CNC TURNING INCHARGE

DEPARTMENT :

PRODUCTION Dept.

REASON FOR EMPLOYEE OF MONTH -

EFFECTIVE IMPLEMENT OF KAIZEN



We, at Omnitech implemented,

1. KAIZEN,
2. PPAP(Up-to Level 3)
3. 5S



where the smile longer

Some of products photographs





where the smile longer

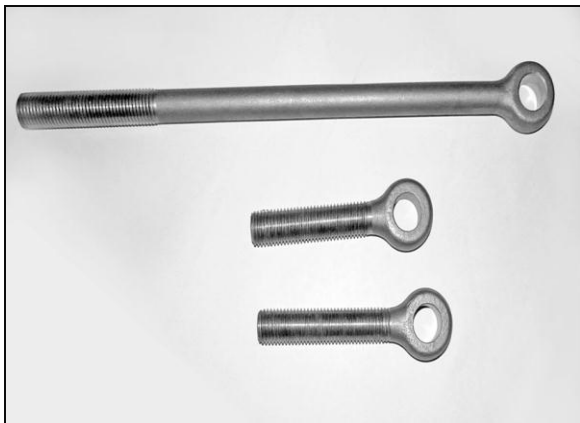
Product Range





where the smile longer

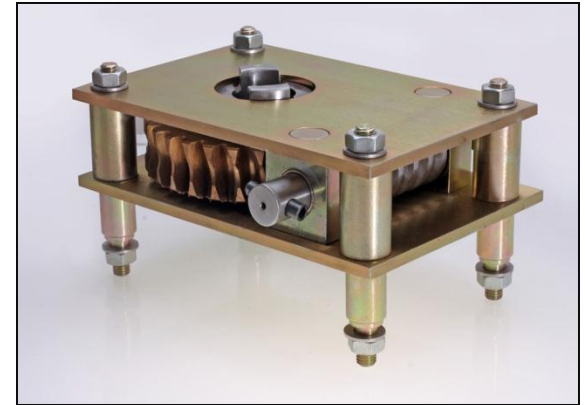
Product Range





where the smile longer

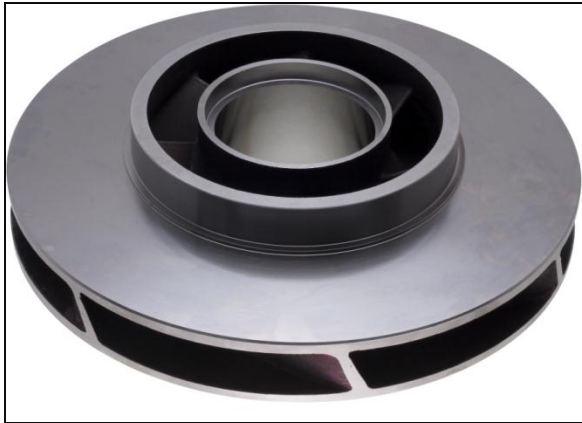
Product Range





where the smile longer

Product Range





where the smile longer

Exports detail

LAST FIVE YEAR'S NO.OF CONSIGNMENT EXPORTED

SR.NO.	NO.OF.CONSIGNMENT EXPORT	YEAR	Nos. of FCL
1	48	2009-10	
2	140	2010-11	
3	121	2011-12	7
4	68	2012-13	28
5	13	2013-14	39



where the smile longer

Quality Control :-

Quality Technique(7QC Tools) Followed :-

1. 8D
2. Why-Why Analysis
3. APQP
4. PFMEA
5. SPC
6. MSA
7. PARETO Analysis





where the smile longer

Quality Control Equipment :-

We have CMM of below specs :-

Range :- X- axis :- 1000 mm

Y-axis :- 700 mm

Z- axis :- 600 mm

Resolution :- 0.2 Micron

Profile projector as per below specs.

Range :- X- axis :- 200mm

Y- axis :- 100mm

Resolution :- 0.001mm

Glass Scale Diameter :- 300mm

Zoom :- 10X, 20X & 50X





where the smile longer

Quality program

EMPLOYEE OF THE MONTH OCT. 13 --

NAME : Ashish Bhadresha

DESIGNATION : Q. C. Manager

DEPARTMENT : Q. C. Dept.

REASON FOR EMPLOYEE OF MONTH --

REJECTION CONTROL SUGGESTION



We, at Omnitech Believe,

**"Do it Right, the 1st time
and Every time."**

**"Quality is not an act, it is a
habit"**



where the smile longer

Employee Motivation Programme





where the smile longer

Near Future expansion plan

- Land Area - 10000 Sq. Meter
- Immediate Area of Construction - 96600 Sq. Ft
- List of new machinery will be installed
- List of new Inspection Facility will be installed
- Projected sales turnover over the next 5 years
- Ware housing planning in US and EU Countries

List of Machineries Planned(Make :- DMG- Germany)

- CNC Turning Center (Ø600 x 1000 mm) – 1no
- CNC Turn Mill Center (Ø300 x 600 mm) – 2nos
- Vertical Machining (1000 x 600 x 500 mm) – 4nos



where the smile longer

Bird View of Upcoming Facility





where the smile longer

“Thank you very much for showing interest & Hope for your valued support in this path.”

