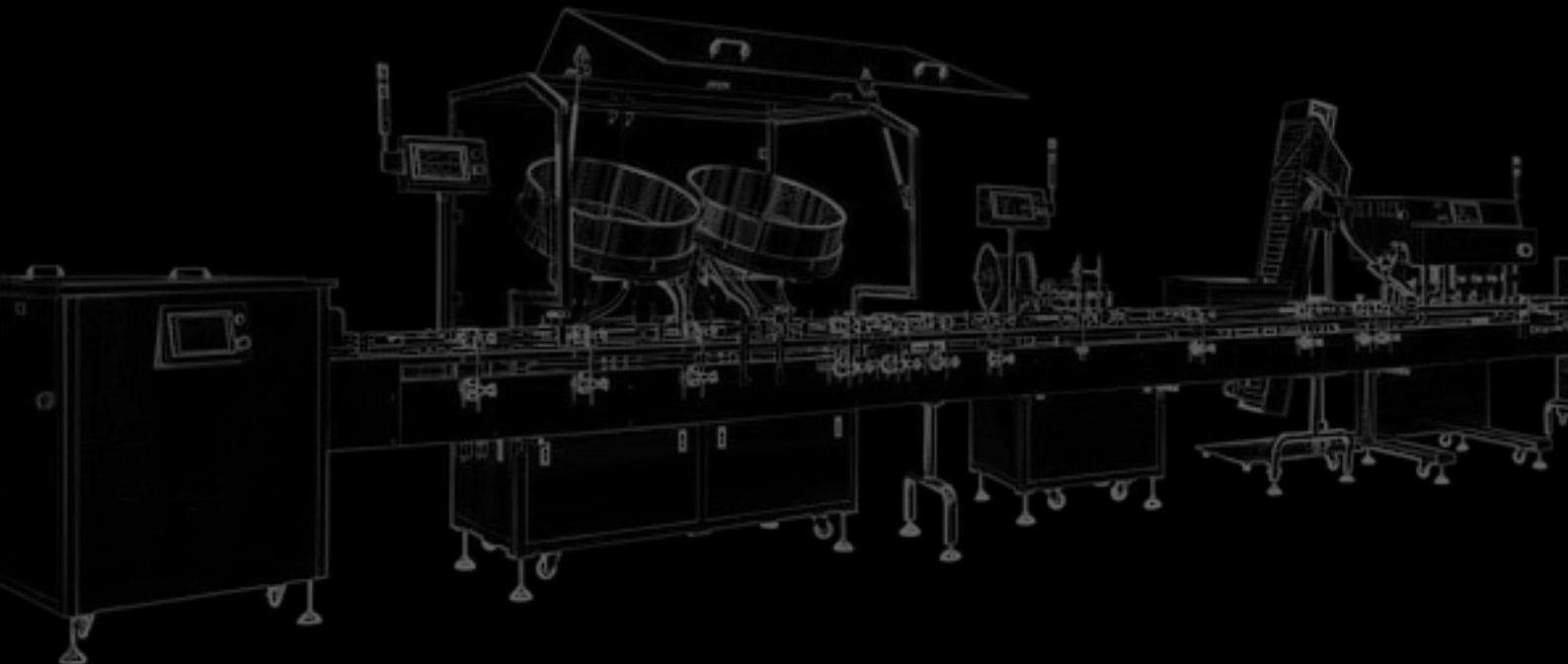




**OCTAVIC PTS**

# **PRODUCTION EFFICIENCY TRACKER**

Transforming production processes with  
real-time planning & monitoring





## OVERVIEW

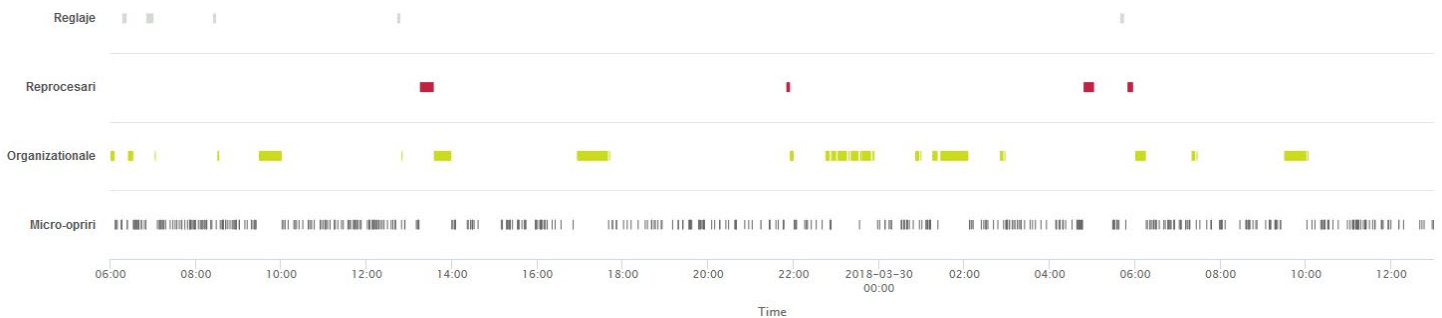
The Production Efficiency Tracker (PET) is a holistic system that helps you get insights of real-time production work processes. Its aim is to help you achieve your production targets faster and improve your production schedule.

PET provides advanced visual management solutions on the production floor. The system not only tracks the production processes, it also monitors all the detailed actions simply by annotating data.

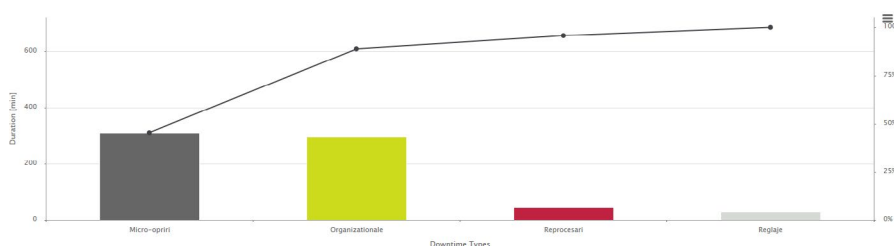
PET can be implemented on any production line. It is easily adaptable to ANY industry and ANY factory's particular needs.



## DOWNTIME INSIGHTS



By having a clear overview of the reasons for the different interruptions on the production line, it enables production organizations to have a more structured approach towards optimization. PET is able to auto-annotate part of these stoppages and is offering a very user-friendly interface to annotate the unknown ones.



## CHANGEOVERS

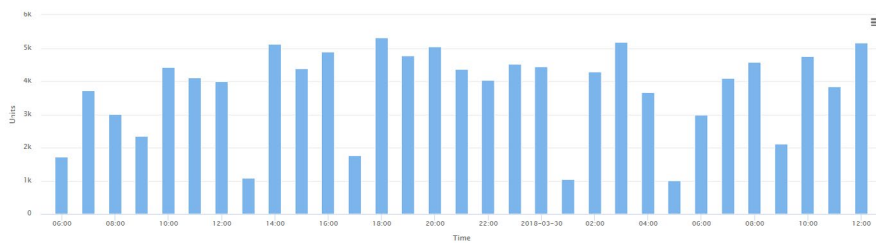
All changeovers are auto-annotated giving you precise information of the lost time.



## PRODUCTION & QUALITY INSIGHTS

### Production line speed

Gives insights about non-optimal utilization of the line and reveals hidden problems that could have high impact over extended periods of time.

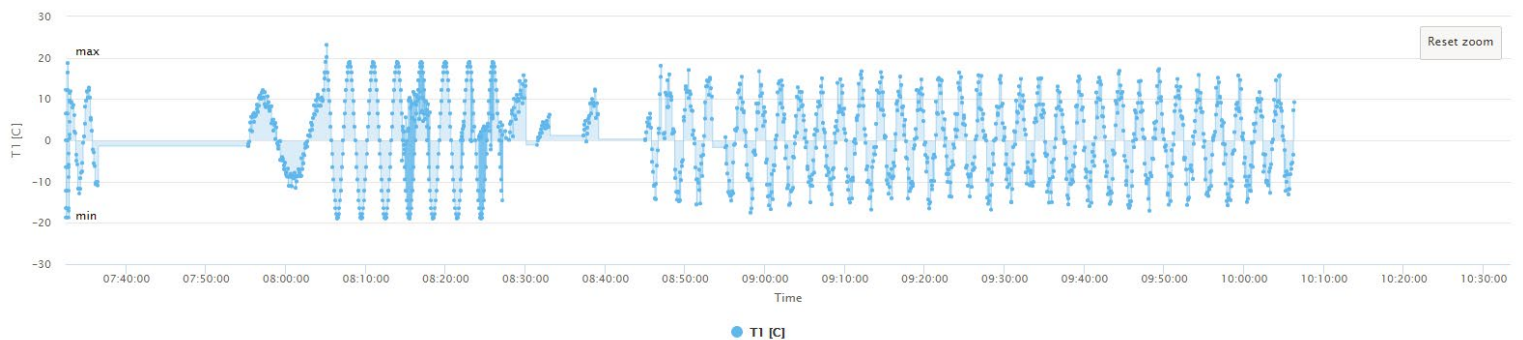


### Defects pareto analysis

A clear overview of the different quality problems offers traceability and an efficient tool for root cause analysis.

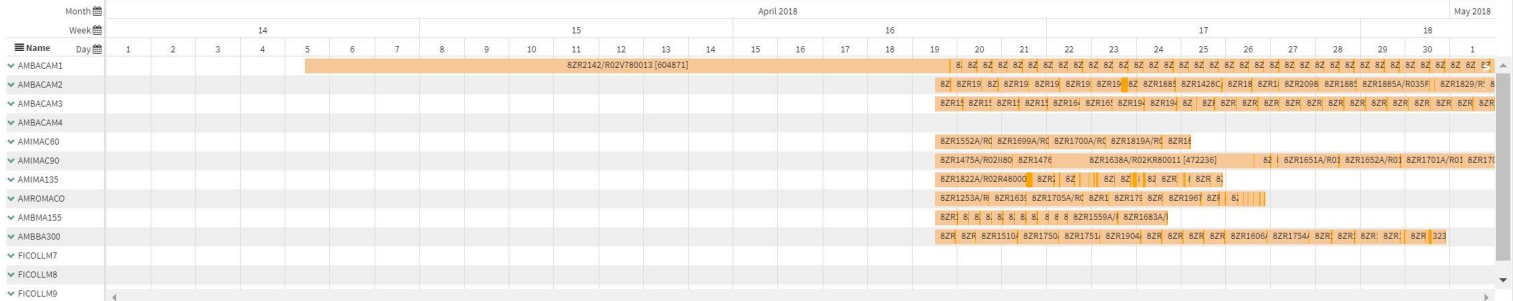
### Process parameters

Parameters of the process are continuously adjusted in order to control the process. Lack of data for these changes causes poor understanding of what goes wrong and what is actually making things better. This is an important tool for a better understanding of what is really happening behind the scenes.





## PRODUCTION PLANNING

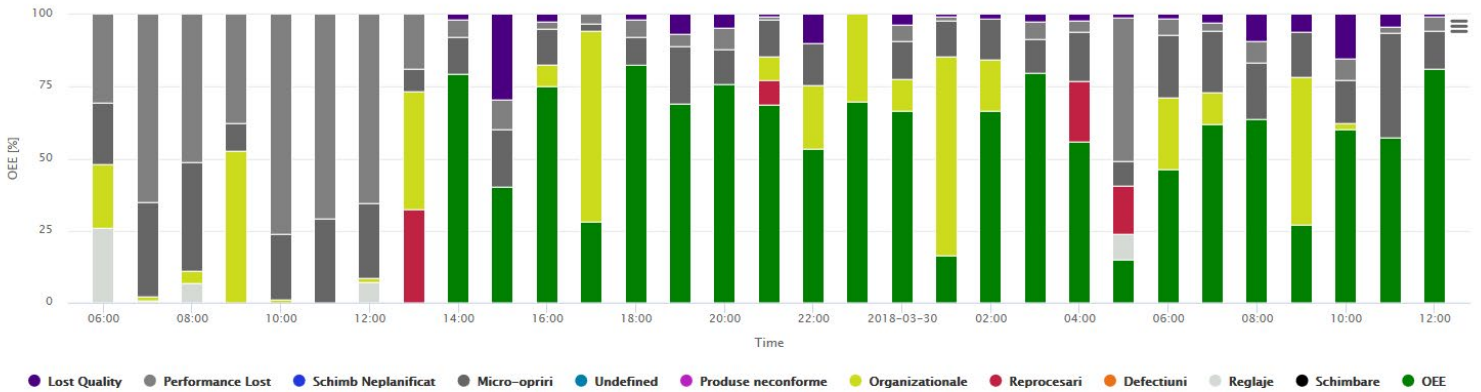


PET provides a real time planning solution for minimizing the risk of non-delivery and improve predictability.

The system takes into account historical data for higher accuracy. The management of the different production orders that need to be executed is handled in an easy and intuitive way.



## ADVANCED ANALYTICS AND REPORTING



Flexibility in working with data is key to understanding what is actually happening.

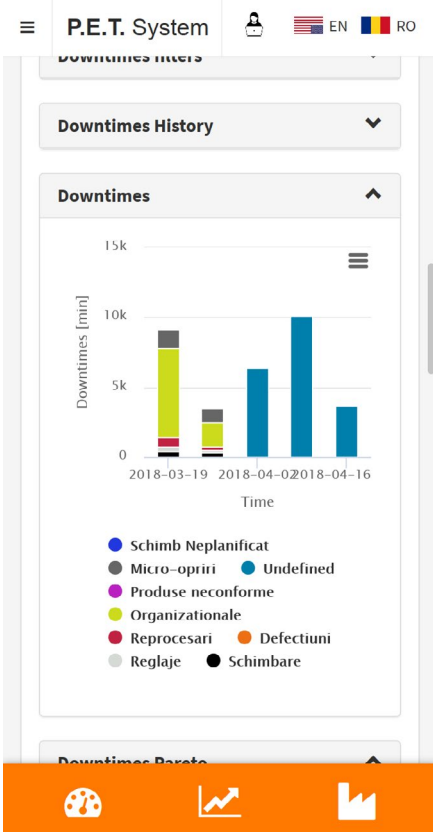
That's why our dynamic, filter-based reporting offers the insights needed to understand what went wrong and what is causing the losses.



### VISUAL MANAGEMENT



Visualizing data on the production floor in a meaningful and simple way helps you to spot where the issues are and provides an efficient tool to help you act at the moment when such events are happening.



### MOBILE INTERFACE

Access to data in real time on your mobile device, including real time notifications about what is happening, gives a much better reaction time and control.

Our mobile interface offers real-time data access, including valuable and significant notifications to enable you to react and control the production process.



## SIMPLE OPERATOR INTERFACE

The key part for a system that uses the knowledge of the people involved in production is how easy it is for them to interact with the system and how it enforces them to input data.

That's why PET has a very operator-friendly interface, with few options and a guided workflow for collecting data from production processes. It uses simple dashboards to guide the operator interaction with the system, and enforces good practice without needing prior knowledge.



### SUPER EASY TO INSTALL & INTEGRATE WITH EXISTING INDUSTRIAL INFRASTRUCTURE

The system can be quickly and easily integrated with any type of equipment, including old machinery



# OCTAVIC PTS



[www.octavic.ro](http://www.octavic.ro)

**ADDRESS:** 13, Horea Str. 410080  
Oradea, Romania

**TEL:** (0040) 740 300 049

**E-MAIL:** office@octavic.ro

© Copyright - Octavic PTS  
All rights reserved.