

TimeLine ERP AUTOMOTIVE

THE ERP SOLUTION FOR MASS PRODUCER AND AUTOMOTIVE OPERATIONS

Fully Integrated: Production, QA, ODA/SDA, EDI, Accounts, CRM

Integrated Email and Document Management

Visual Course and Detail Planning, APS

Call-Ups, Automotive Extensions

Tool Management and Tool Making

Project Management and APQP

Personal Support





cht!
lich

TimeLine is likely the most innovative ERP solution for processing operations on the German market. Awarded the 2017 TOP 100 Innovation Prize and the 2016 ERP System of the Year, TimeLine is the ideal platform for medium-sized businesses with flexible operations. TimeLine merges industry-specific ERP functions with an integrated email and document management system, which is able to map all business processes and documents in a single system.

The flexibly adaptable architecture of the TimeLine platform also provides the following:

- Full ERP functionality everywhere via Internet (even without a terminal server),
- Mobile APPs for CRM and machine data recording and
- TimeLine developer for independent adaptations (queries, report generator, statistics, pivots, screen generator for information modules and score cards).

The services and support from the manufacturer include

- a personal contact person,
- adaptations to individual requirements (while preserving release capability) and
- rapid roll-out times and clear implementation costs for commissioning.

TimeLine is the altogether best solution for anyone looking to introduce clear prices in a short time.

INDUSTRY MODULES for Your Core Processes

Call-Ups

Call-Ups, Detailed Call-Ups and Call-Up Orders

Automotive Extension

Adapted Document and Call-Up Scheduling, VDA-Compliant Labels (VDA Goods Tags, Bills of Lading, EDI Accompanying Goods, etc.)



Planning

Visual Rough and Detail Planning, Advanced Planning and Scheduling (APS)

Project Management and APQP



Tool Management and Tool Making

Management of single and multiple-component tools, including service life, block status and documents; tool making orders with tool-specific cost recording. Certificates of posting and delivery orders for external tool making.

BASIC MODULE

Merchandise Management

Including purchasing and sales, MRP run and drawing management

Production

Including work plans and bills of material, as well as feedback and reworking

RECOMMENDATION for Additional Modules

Logistics and Dispatch

Empties and packaging management, dispatch processing, container management, RDT modules, customs clearance

Multi-Warehouse Management

Chaotic warehousing, batch and container management

Calculation

Inventory

Servicing

Asset master with replacement part bills of materials, maintenance plans and servicing agreements; servicing planning

External Production

Extended workbench

Quality Assurance

Test Equipment Management, Monitoring and Control Plans, Test Orders, Incoming Goods Inspection, Measured Value Recording, Factory Certifications, Control Charts, QDas Interface, Supplier Evaluation, Complaint Processing, FMEA, BABTEC Interface, Böhme & Weihs Interface, APQP Project Management, Ishikawa/5-Why

OP Management and Dunning

Feedback Reporting

You can find more information at:
www.timeline-erp.de

ADDITIONAL MODULES e3 platform



CRM

CRM, mobile CRM app, opportunities and follow-ups, offers with integrated text processing



Email and Document Management

Balanced Scorecard / Management Information System

EDI

Personnel Deployment Planning

Pivot Tool

Flexible Analyses without Excel

DATA RECORDING

operating data recording (ODR)

machine data recording (MDR)

Mobile data recording

staff time recording (STR)

PRODUCTION and Rough Planning

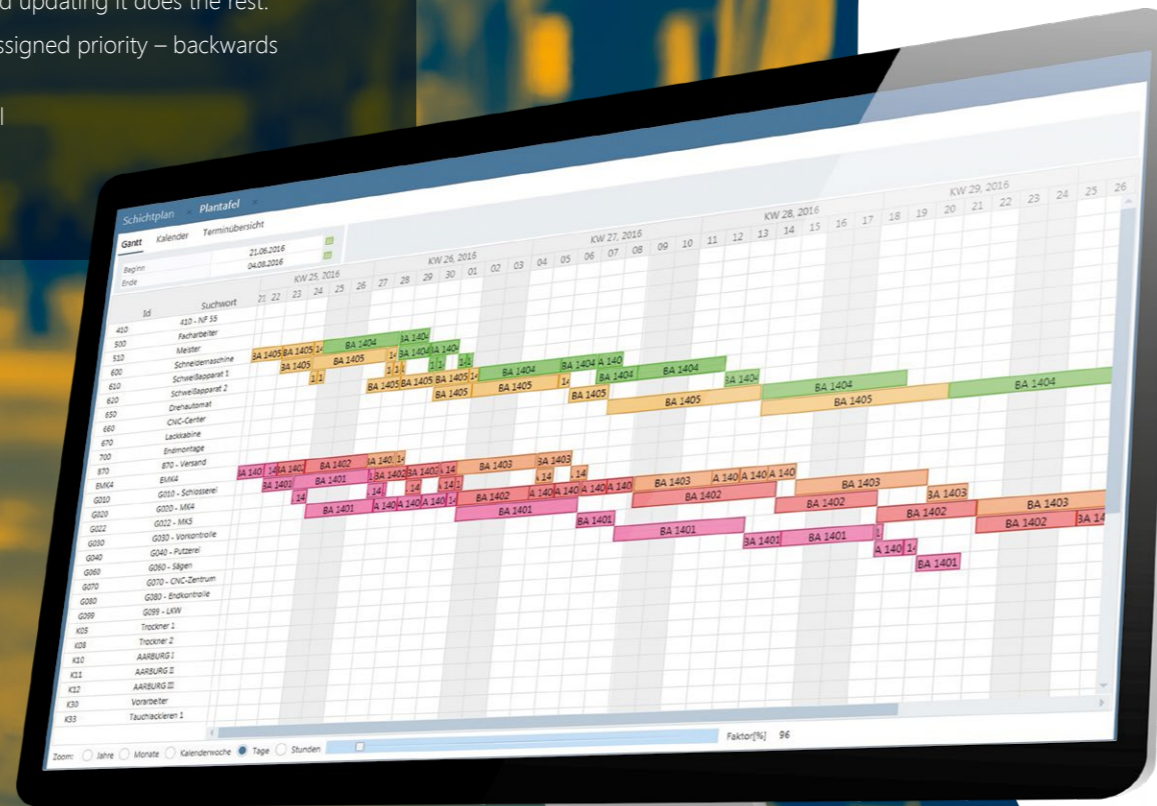
Planning is the core of every production operation – and the weak point of most ERP systems.

At the point where other systems run out of steam, the functional diversity of the production module is only getting started, as TimeLine was created in collaboration with more than 800 industrial businesses in Germany.

Despite the ease of setting it up, the algorithm system provides a pragmatic solution for coordinating the production dates: All production orders are automatically planned by the planning system based on **finite** capacity. To do this, you define your machine (and resources), set up the “shift plan” and give every production order a target date to determine its priority – and updating it does the rest.

It plans all production orders – sorted by your assigned priority – backwards (or forwards) with respect to the target date.

The result is a constantly updated overview of all orders and their final deadlines, along with the capacity utilisation of your machines/resources.



PRODUCTION and Detail Planning

The detail planning allows you to drag and drop the planned orders to the desired machine/resource in the desired order. At the same time, you are planning each machine/resource in your own calendar.

Master data

- Bills of material
- Work plans
- Shift plans and resources

Operating orders

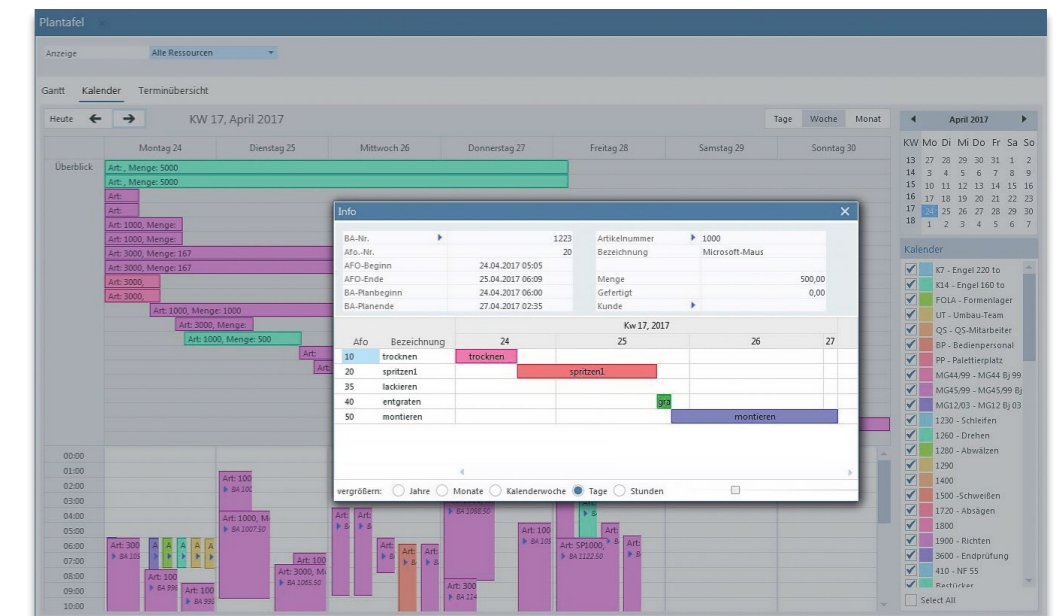
- Option for automatic generation using a production proposal, either manually or by transfer from a customer order to a production order
- Printing routing cards, time tickets, material requisition cards, etc. (adaptable)

Planning

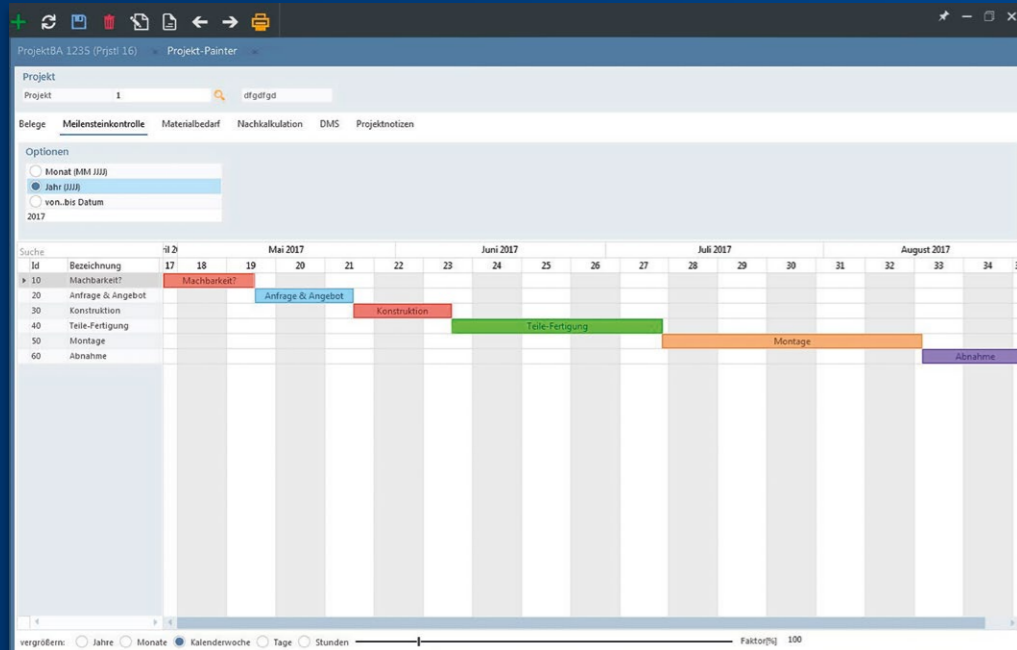
- Visual planning table
- Planning based on finite or infinite capacities
- Forward and backward scheduling
- Automatic just-in-time updates for planning

Feedback

- Time and quantity feedback
- Individual and collective feedback



PROJECT MANAGEMENT in Tool Making



Project management in TimeLine has been designed for tool and mould making and for introducing new parts in series production. Here as well, the integration of all processes in the ERP system is a significant factor, as for a project is ultimately the sum of all tasks, documents and objects included in a process.

Everything at a glance: the TimeLine Project Explorer

- Internal documents: Viewing, creating and processing all documents of a project using a mask
- External documents: Managing Excel sheets, images, Word files, drawings and other files in the Project Explorer's follow-up document management
- Milestones: Division of the project into any number of (time-related or technical) milestones with separate budgeting (hours and costs) and scheduling

Partial invoices: Partial and final invoice procedures for external tool making

SALES and CRM

Continuous: From the query to the calculation to the quotation and even to the deadline follow-up – all processes are interlinked:

- Inquiry recording and tracking
- Transferring the inquiry to the calculation, feedback of the calculation values back into the inquiry
- Generation of quotes, either from the inquiry or the calculation
- Automatic follow-up for your quotations
- Fast telephone helpline for questions

All customer data in one single system – everything at a glance: Any number of addresses and contact persons for the customer, filing of all contact data such as the phone number, fax number, email address, etc. for the contact person.

Activities under control: Management of contact notes, workflow-supported automatic follow-up, opportunity management, setting up distribution lists for mass emails, mass letters, etc.

Email and document management:

- Sending emails at a click from the customer master and records
- Email archive / automatic email importing (IMAP and SMTP)
- Mass emails and email campaign management

- Integrated rich text editor with photos, charts, etc. for the integrated preparation of quotations from the system (without diverting via MS Word)

Calendar and task management:

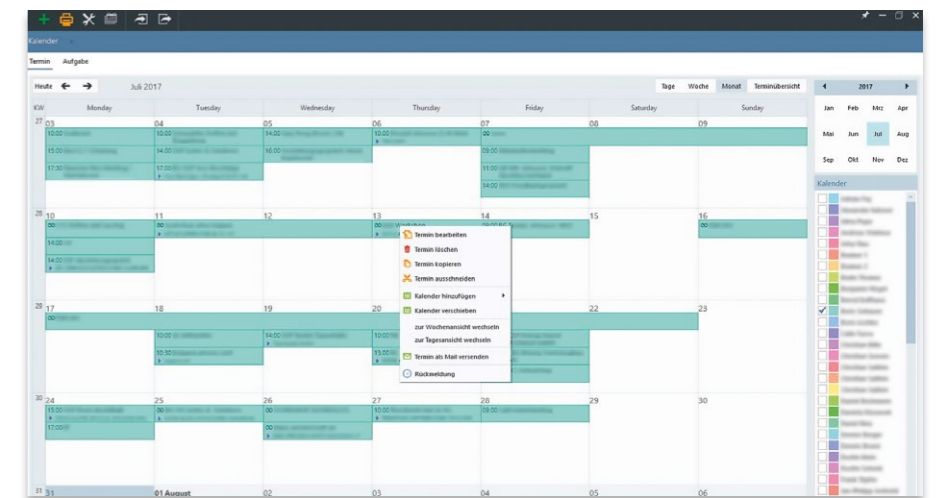
- Calendar management with a CAL-DAV server (bidirectional synchronization of dates with Outlook, iPhone/ smartphones, etc.)
- Task management (e.g. also for APQP / project management)

Integration of your phone system:

- Caller ID with a direct jump to the central customer information
- Direct dial by mouse click

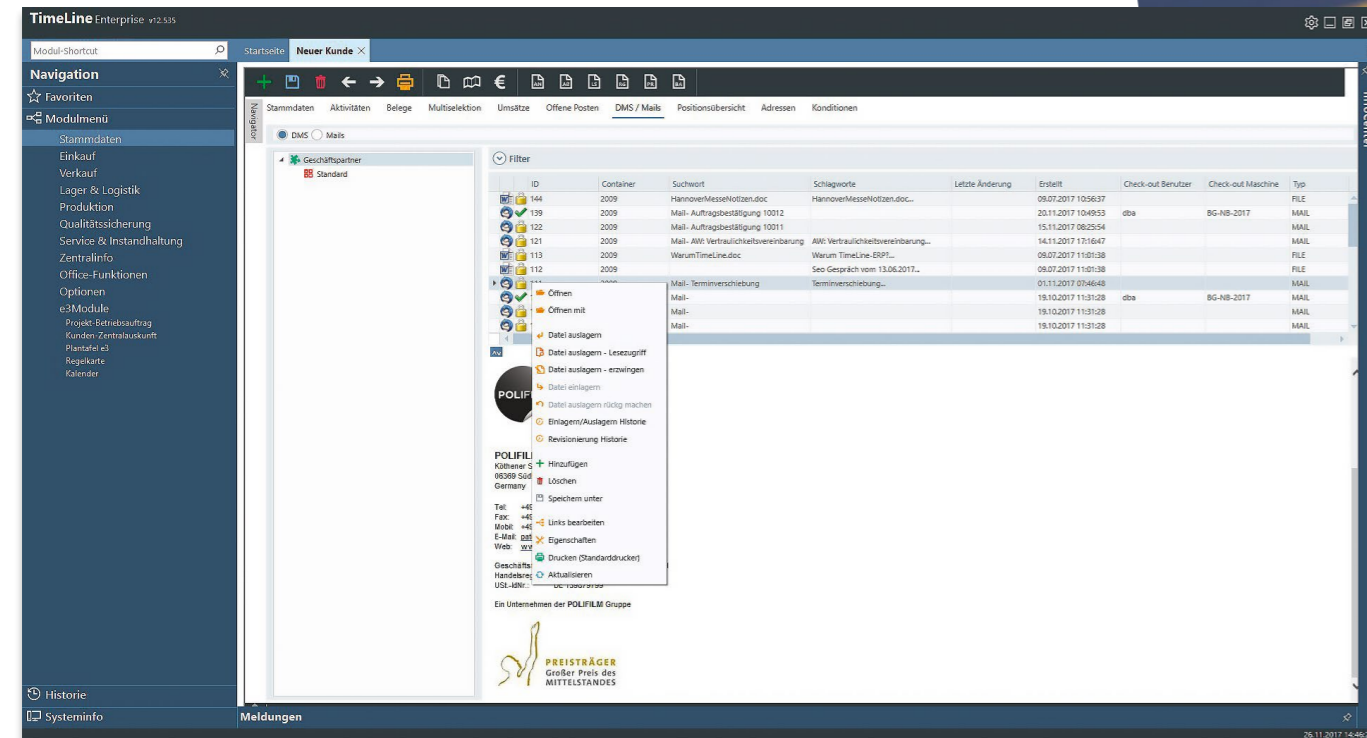
Central customer information: Correspondence, incoming and outgoing emails, contact notes and follow-up dates, internal records, DMS documents, addresses and prices, history and statistics, outstanding items, delivery backlogs and revenues.

Archiving: Printouts are optionally redirected to a PDF archive, e.g. to archive invoices and other records.



EMAIL AND DOCUMENT MANAGEMENT (DMS)

TimeLine provides you with integrated document management in the ERP system. In addition to linking files with objects in the ERP system, TimeLine DMS also makes it possible to file documents on the DMS server. Adapters ("clients") are available on the user page for Windows File Explorer and for the Outlook and Tobit email systems.



Automatic assignment of your emails to the customer.

TIMELINE DMS Your Benefits:

- Email integration:** Automatic importing and selective archiving of incoming and outgoing emails, along with attachments. Incoming emails are automatically identified by the address, imported, indexed by keyword and assigned to the business partner in the ERP system.
- Audit-compliant archiving:** TimeLine DMS will probably be certified to become an audit-compliant archiving system with version 13.
- Automatic document importing:** Via *managed directories*, documents in certain directories are automatically added to the DMS and indexed by keyword.
- Explorer integration:** Any number of files can be copied over to the DMS system directly via Windows Explorer (drag-and-drop).
- Indexing by keyword:** Documents copied over to the DMS system are automatically indexed by keyword.
- Barcode OCR:** As an option, barcodes in documents (e.g. PDF, Word, Excel) can be scanned and used for linking them with projects, products, tools, customers, etc.
- Multiple linking:** The same document can be assigned multiple times. For example, an incoming complaint email can be assigned both to the complaint as well as to the customer and the project.
- Security:** TimeLine DMS consists of a separate file system that is located on the DMS server. Depending on permission management in Windows, this file system is not accessible from the outside. In this way, you are provided with a protected area for files that are jointly used and organised by assignment to ERP objects – so customers, products, etc.
- Availability via the web:** Files in the DMS are fully available via the web. Use TimeLine³ (e3 platform) for web access.
- Check-out:** Documents can be checked in and out for editing. During check-out, the file is available for editing online or offline. Check-in is used to update the file in the DMS.

The screenshot shows the SAP InfoCenter interface. At the top, there is a navigation bar with icons for home, search, and other functions. Below this is a table with columns: offen, Einzelpr, ME, Endpreis, Dispo, KD-Wunscht, Planstatus, Modell-ID, and Werkstoff. The first row shows: 0, 2.000, 28,56, 100 Stück, 671,20, 05.01.2018, 05.01.2018, bestätigt, Z410.

Below the table, there are several widgets:

- Preise/Dispo:** A table showing price and disposition data.

Preisherh.	spez MStaffel
WZ-Amort.	0,00
ZEndpreis	671,20
Netto	671,20
Brutto	798,73
Whrg	EUR
Bestand	0
reserviert	2.000
bestellt	0
in Prod	2.000
verfügbar	0
- Fotos:** A photo showing several metal flange fittings.
- Umstellung:** A section showing changeover dates: Notierung vom 01.11.2017, letzte Umstellung 01.01.1900. There is a button labeled 'Umstellprotokoll'.

On the right side of the interface, there is an 'InfoCenter' sidebar with a list of tasks and their counts:

- Checklisten Aufgaben: 0
- DFÜ: 4
- Lieferverzug: 1.627
- nicht berechnete LS: 11
- Workflows: 0
- Funktionstasten: 0

USABILITY HIGHLIGHT IN VERSION 13

Information centre

By using the information centre and the integrated widgets, you will always keep track of your most important information. Automatic updating ensures that you are provided with the real-time status of the processes in the system. Transparency in the ERP system has never been this easy.

Standard widgets

TimeLine offers you a series of ready-made standard widgets that display the most important information.

- **Task follow-up:** Shows all open quotations with a follow-up date of today or in the past
- **Checklist tasks:** Shows all of the current user's tasks in checklists
- **RDT**
- **Blocked work orders:** Shows all work orders that are blocked or in which a resource is set as blocked
- **Calendar**
- **Delayed delivery:** Shows order records with a delivery date in the past
- **Non-invoiced delivery notes:** Shows all delivery notes that have been recorded or partially delivered
- **Non-invoiced accounting records:** Shows all accounting records (invoices, credit notes and direct bills) that have not been printed or have been changed
- **Non-reviewed incoming goods invoices:** Shows all incoming goods invoices / direct bills or debit notes that have not been marked as reviewed
- **Outstanding order requests**
- **Workflows**
- **Non-posted BDE stamps**
- **And several more...**

Individual widgets

It is also possible to create customised widgets. In general, they can be divided into three categories:

- **SQL statements:** Simple database queries
- **Data windows:** For example, lists that permit direct jumping
- **User objects:** More extensive windows with functions

Flexible rights management

Widgets can be assigned individually:

- In general (for all users)
- For each user individually
- For a group of users (roles)



TimeLine ERP AUTOMOTIVE

TimeLine Business Solutions Group

Headquarters: Gebauer GmbH
Obere Dammstr. 8-10
42653 Solingen

Tel.: +49 212 230 350
Email: info@timeline.de
www.timeline.de

