

# COMPANY PROFILE

**selec**<sup>®</sup>  
Creating Best Value



- ▶ Meters
- ▶ PLCs
- ▶ Temperature Controllers
- ▶ Timers
- ▶ Counters
- ▶ Process Indicators
- ▶ Protection Relays

[www.selec.com](http://www.selec.com)



The No. 1 brand in India - Now expanding worldwide...



Main Building



Production



Molding Plant



R&D Building



Delhi Office

## Corporate and Sales

- 2014 New design center with capacity of 230 people
- 2013 DSIR recognition
- 2011 Network Expansion to over 75 countries
- 2011 CE & UL approval for new product series
- 2010 Selec GmbH, German subsidiary formed
- 2008 Selec Controls USA Inc, US subsidiary formed
- 2007 Relocation of our Head quarters
- 2006 Expansion of international distribution network in various countries.
- 2004 ISO 9001:2008 - Certification upgraded
- 2002 ISO 9002 Certification
- 2000 Selec Controls Pvt. Ltd. Formed.

## Manufacturing

- 2014 Expansion of SMT Manufacturing to Five completely automated lines
- 2013 Implementation of Lean manufacturing process
- 2011  
2010 Plant 3 - Commissioned with capacity of about 5 million plastic parts a year with automatic screen and laser printing
- 2009 Plant 2 - Expansion - Commissioned with capacity of over 2 million products / year
- 2005 Plant 1 - Commissioned with fully automated electronic manufacturing and plastic injection molding
- 2000 First automated manufacturing line

## New Product Launches

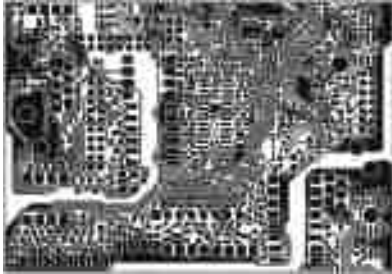
- 2014 APFC (Automatic Power Factor Controllers)
- 2013 Din Rail Meters, PLC Flexys Series
- 2012 Protection Relays
- 2011 Analog + Digital LCD Ammeters / Voltmeters
- 2011 New range of Electrical Metes & 17.5mm Din Rail Timers
- 2010 Digital Timer X56 Series
- 2009 Temperature TC Series  
Electrical Meters: Ammeters, Voltmeters, Multifunction Meters  
PLCs with HMI Addition to Counter & Temperature Products
- 2002 Temperature Controllers: Digital & PID Series
- 2000 Timers: 22.5mm Din Rail Timers, Panel Mount Timers & Counters

# PRODUCTS: DESIGNED FOR EXCELLENCE

Innovative, Attractive, Reliable, Cost Effective



Software



PCB Design



Mechanical Design

# ENGINEERING & DEVELOPMENT

Technology our core focus



Hardware Design



Test Lab

# ELECTRONIC MANUFACTURING

SMT manufacturing Plant ( 5 Lines )



PCB Printing Machine



High speed pick/place machine



Automatic Optical Inspection Machine

# ELECTRONIC MANUFACTURING

## Assembly and Testing



Manual assembly



Testing

# PLASTIC MANUFACTURING

## Injection Moulding



## PRINTING



Automatic Screen Printing



Laser Printing



Tool Room



# METERS

Appreciated the world over for performance and looks



## Our Product Range:

- Multifunction Meters
- Energy Meters
- VAF Meters
- Digital Panel Meters - Voltage, Current, Frequency, Power Factor
- Automatic Power Factor Controllers

## Applications:

Control Panels, Motor control centers, Mains panel distribution board, Building energy monitoring, HT & LT electrical system, Genset panels, Plant Monitoring & Control system



Multifunction Meter



Energy Meter



VAF Meter



Digital Panel Meter



APFC

# DIGITAL / ANALOG PROTECTION RELAYS

Phase, Voltage, Current, Frequency, Earth Leakage



## Our Product Range:

- Earth Leakage Relay
- Current Protection Relay
- Voltage Protection Relay
- Phase Sequence Relay

## Applications:

Starters, Control Panels, Machine Control, Oil Refineries, Steel Plant



Earth Leakage Relay



Current Protection Relay



Voltage Protection Relay



Phase Sequence Relay

# PLC / HMI

Compact, Single Box, Powerful & Expandable PLC + HMI Solutions



**Our Product Range:**

- PLCs, PLCs with LED display
- PLCs with text LCD display
- PLCs with graphics LCD display
- Independent HMIs

**Applications:**

Packaging, Pharmaceuticals, Water treatment, Temperature control, Polishing machines, Molding, Food industry, Battery charging, Screw compressor, Printing, Oil dispensers,



Flexys Series

MM303X Series

MM3032

Twix

# TEMPERATURE CONTROLLERS / PROCESS INDICATORS

Setting new standards in looks & performance



## Our Product Range:

- Economic Temperature Controllers
- Advanced PID Controllers
- Process Indicators

## Applications:

Plastic Process, Packaging, Ovens, Metal Industries, Furnaces, Scientific, Medical, Pharmaceutical etc.



Economic Temperature Controllers



Advanced PID Temperature Controllers



Profile Controllers



Process Indicators

# TIMERS

Leading & innovation - New 600 Series



## Our Product Range:

- 17.5mm DIN Rail Timers
- 22.5mm DIN Rail Timers
- 8 Pin Socket / Panel Mount Timers
- Digital Timers

## Applications:

Electrical Panels, Switchgear, Packaging, Printing and other measuring



17.5 mm Din Rail Timers



22.5 mm Din Rail Timers



8 Pin Socket/Panel Mount Timers



Digital Timers

# COUNTERS



**Our Product Range:**

- Counters - LED / LCD
- Time Totalisers - LED / LCD
- Rate Meters
- Programmable Counters / Batch Controllers

**Applications:**

Measurement of RPM, Flow, Speed, Length, Production monitoring in all industries.



LED Counters



LCD Counters



LCD Time Totalisers



Rate Indicators



Digital Counter+Timer

# CERTIFICATION & COMPLIANCES

- UL and CE marking on most of the products
- Type tests as per relevant standards ● ISO 9001-2008

<p><b>CERTIFICATE OF COMPLIANCE</b></p>  <p>This is to certify that the <b>QUALITY MANAGEMENT SYSTEM</b> of <b>SELEC CONTROLS PVT. LTD.</b></p> <p>Regd. Office: E-131, Anand Industrial Estate, Salt Vihar Road, Andheri (East), Mumbai - 400 072, Maharashtra, India.          Factory: Plot No. EL-27/3, Electronic Zone, T. T. C., Industrial Area, M. I. D. C. Malgaon, Nashik - 422 010, Maharashtra, India.</p> <p>has been assessed by International Certification Services Pvt. Ltd. and registered as complying with the requirements of the following International Standard:</p> <p><b>ISO 9001:2008</b></p> <p>The Quality Management System applicable to:</p> <p>Scope: To Design, Manufacture and Supply of Electronic Process Control Instruments like PLC's, Temperature Controllers, Process Indicators, Timers, Counter, Sensors, Meters and Protection Relays.</p> <p>Registration No. : IQ03/442          Registered Date : 07<sup>th</sup> January, 2009.          Reassessment Date : 13<sup>th</sup> January, 2010.          Issue Date : 18<sup>th</sup> January, 2010.          Expiry Date : 30<sup>th</sup> December, 2012.</p>  <p>Accredited by Joint Accreditation System of Australia and New Zealand</p>	<p><b>CE MARKING CERTIFICATION DIRECTORY</b></p> <p><b>QUYK3.E233771</b></p> <p>Process Control Equipment, Electrical - Component</p> <p>Process Control Equipment, Electrical - Component</p> <p>Not General Admissible for Process Control Equipment, Electrical - Component</p> <p>SELEC CONTROLS PVT LTD          JAS ANZ REGD. OFFICE          100/100/100/100          MALGAON, NASHIK 422010, INDIA</p> <p>Telephone numbers: Tapes: 91 20 265 580 580, FAX: 91 20 265 580 580, 44 303 44          Customers: Team 910 200 27 2043</p> <p>The responsibility of the device with a specific use and product is dependent upon the following conditions of use:</p> <ol style="list-style-type: none"> <li>The manufacturer is intended for general use. Only the best part of the device has been tested in the laboratory.</li> <li>The conditions of the general use are not suitable for field conditions, the device is not to be used in field.</li> <li>The device is suitable for use in a CE category.</li> </ol>	<p><b>CPRI</b></p> <p><b>TEST REPORT</b></p>  <p><b>Central Power Research Institute</b>          (A Govt. of India Society)          P.O.No. 8066, Sadashivnagar Post Office,          Site E.V. Humana Road,          Bangalore - 560 080 (INDIA)</p>
<p><b>CE</b></p> <p><b>EC Declaration of Conformity</b></p> <p>Name: Selec Controls Pvt. Ltd.          Address: 100/100/100/100, Malgaon, Nashik - 422010, India</p> <p>Declaration is made by the following person(s):          Prof. Shivraj V. Kulkarni - 9127          Email: Shivraj.V.Kulkarni@seleccontrols.com          Date: 18/01/2010</p> <p>By using this declaration, the manufacturer declares that the product conforms to the following standards:          CE Marking - EN 60947-1          EN 60947-2          EN 60947-3          EN 60947-4          EN 60947-5          EN 60947-6          EN 60947-7          EN 60947-8          EN 60947-9          EN 60947-10          EN 60947-11          EN 60947-12          EN 60947-13          EN 60947-14          EN 60947-15          EN 60947-16          EN 60947-17          EN 60947-18          EN 60947-19          EN 60947-20          EN 60947-21          EN 60947-22          EN 60947-23          EN 60947-24          EN 60947-25          EN 60947-26          EN 60947-27          EN 60947-28          EN 60947-29          EN 60947-30          EN 60947-31          EN 60947-32          EN 60947-33          EN 60947-34          EN 60947-35          EN 60947-36          EN 60947-37          EN 60947-38          EN 60947-39          EN 60947-40          EN 60947-41          EN 60947-42          EN 60947-43          EN 60947-44          EN 60947-45          EN 60947-46          EN 60947-47          EN 60947-48          EN 60947-49          EN 60947-50          EN 60947-51          EN 60947-52          EN 60947-53          EN 60947-54          EN 60947-55          EN 60947-56          EN 60947-57          EN 60947-58          EN 60947-59          EN 60947-60          EN 60947-61          EN 60947-62          EN 60947-63          EN 60947-64          EN 60947-65          EN 60947-66          EN 60947-67          EN 60947-68          EN 60947-69          EN 60947-70          EN 60947-71          EN 60947-72          EN 60947-73          EN 60947-74          EN 60947-75          EN 60947-76          EN 60947-77          EN 60947-78          EN 60947-79          EN 60947-80          EN 60947-81          EN 60947-82          EN 60947-83          EN 60947-84          EN 60947-85          EN 60947-86          EN 60947-87          EN 60947-88          EN 60947-89          EN 60947-90          EN 60947-91          EN 60947-92          EN 60947-93          EN 60947-94          EN 60947-95          EN 60947-96          EN 60947-97          EN 60947-98          EN 60947-99          EN 60947-100</p>	<p><b>TEST REPORT</b></p>  <p><b>Government of India</b>          Ministry Of Communications &amp; Information Technology          STQC, Government          Electronics Regional Test Laboratory (west)          Plot No. 1, 1st Floor, MIDC, Chhatrapati Shivaji Maharaj, Mumbai 400 001          Phone: 022-26121014, 022-26122000 (1156), Fax: 022-26122104          Email: west@stqc.gov.in</p> <p>Issued By: Professional Engineer</p>	

# GLOBAL NETWORK

- In over 75 countries and growing
- Our subsidiaries - Selec GmbH | Selec USA



## ORGANISATION

Our dedicated team is our primary strength & is committed to excellence and customer support & service

**Total staff strength: 300+**

R&D	: 62
Operations	: 148
Admin	: 27
Sales	: 70

<b>AMERICA</b>	Argentina, Canada, Mexico, Uruguay, Chile, Ecuador, USA
<b>EUROPE</b>	Czech Republic, France, Greece, Germany, Italy, Poland, Spain, United Kingdom
<b>ASIA</b>	Bangladesh, Bhutan, China, Cambodia, Iraq, Israel, Japan, Jordan, Kuwait, Nepal, Philippines, Singapore, Syria, Sri Lanka, Thailand, Turkey, Taiwan, UAE, Vietnam, Oman
<b>AFRICA</b>	Egypt, Ethiopia, Kenya, Morocco, Mauritius

**OVER 200 DISTRIBUTORS IN INDIA**



## Selec Controls Pvt. Ltd.

(An ISO 9001:2008 Company)

### Regd. Address:

EL-27/1, Electronic Zone,  
TTC Industrial Area, MIDC, Mahape,  
Navi Mumbai 400710, INDIA  
**Tel:** +91-22-4141 8468/8452  
**Fax:** +91-22-4141 8408  
**Tollfree:** 1800 227353 (BSNL/MTNL only)  
**Email:** sales@selec.com

### Selec GmbH

Mollwitzstrasse 2, D-14059, Berlin,  
**Tel:** +49 3030111870,  
**Fax:** +49 303011187-77,  
**Email:** europe@selec.com  
**Web:** www.selec-europe.com

### Selec Controls USA., Inc.

203 Main Street # 205  
Flemington, NJ 08822, U.S.A.  
**Phone:** +908-627-2149,  
**Fax:** +908-968-0940,  
**Email:** usa@selec.com,  
**Web:** www.selecusa.com