



SoftProject
we connect solutions

X4 *BPM Suite*

Business Process Management
for all Business Processes

makes .
business
work



„The X4 BPM Suite gives you a proven standard software tool with which you can define business processes, automate them correctly and securely, and significantly reduce costs by omitting routine tasks.“

Dirk Detmer, CEO of SoftProject GmbH



X4 BPM Suite - The Platform for all Business Processes

Day to day business consists of a wide variety of tasks. In order to be successful on the market, it is important to be able to react to changing demands quickly and flexibly. Business Process Management is the key for more efficiency and therefore competitiveness. The X4 BPM Suite is the leading BPM platform with which automated business processes can be created without programming.

Fast Implementation with the X4 BPM Suite

Whether for traditional B2B transactions, such as those based on EDI or Human Workflows, or for use as an Enterprise Service Bus, the X4 BPM Suite can support you in all areas. More than 200 available adapters and process templates guarantee that your business processes can be implemented quickly.

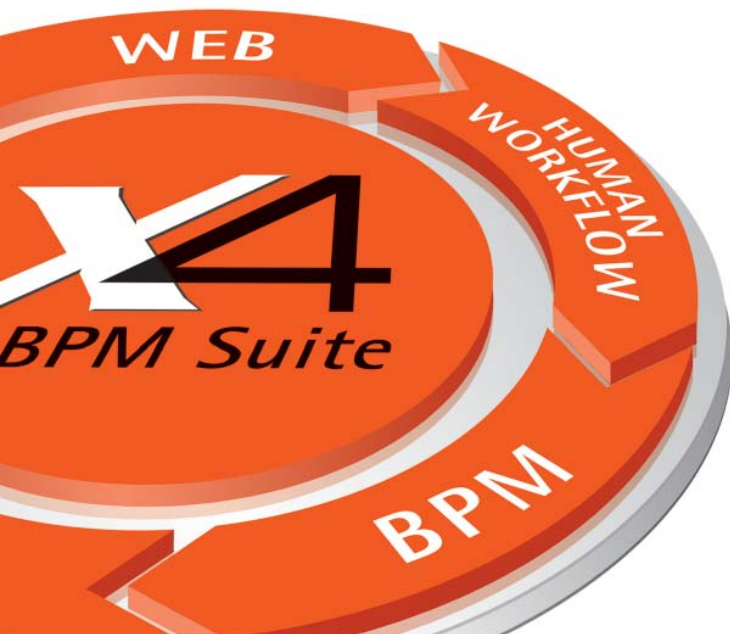
From the Model to Realization

Being able to create business processes without programming makes it possible for a wide user pool to work with business processes. The X4 BPM Suite provides a comprehensive platform for analyzing, optimizing, modeling, testing and documenting business processes.

X4 Industry Solutions

For over 10 years, SoftProject has been developing innovative software solutions based on X4 technology for a wide range of business sectors and requirements. X4 solutions are proven and can be implemented without further programming.

Regardless of the challenges your business presents: X4 makes business work.



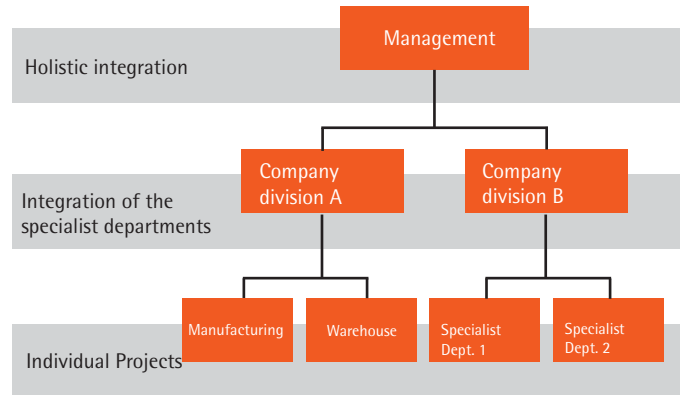
Contents

<i>X4 BPM Suite - For all business divisions</i>	04
From the specialist departments to IT Operations	05
Process Modeling	06
Business Activity Monitoring (BAM)	07
Human Workflow	08
Enterprise Service Bus + Adapters	09
About SoftProject	10
Technology + X4 Solutions	11
SoftProject Customers	12

X4 BPM SUITE - For all process steps and business divisions

Business processes are dynamic; they are complex and closely linked, not only to the company, but also to customers and users. Business Process Management coordinates and automates these overlapping processes.

The X4 BPM Suite incorporates all relevant business units in order to successfully implement Business Process Management. The business processes can be adjusted to the company's or its partners' changing requirements at any time.

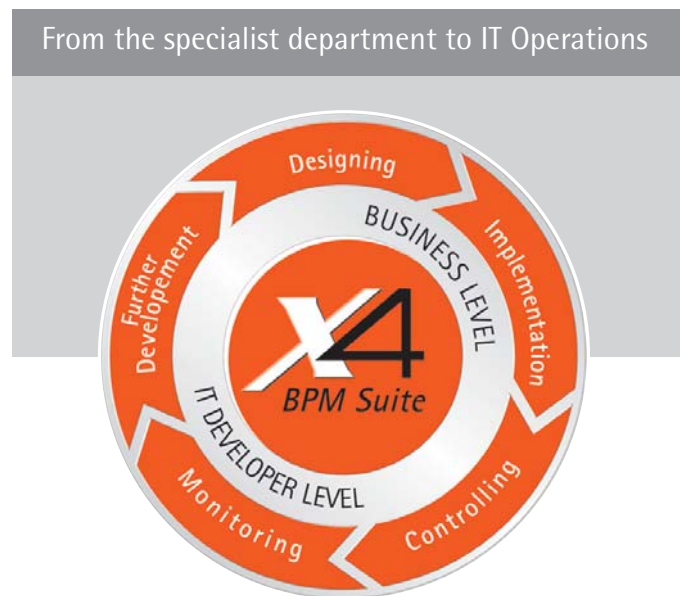


BPM Lifecycle - From a business process model to a technically executable process

The X4 BPM Suite covers the complete BPM lifecycle and supports companies in all phases: from planning, modeling, implementing, integrating, executing, testing and monitoring up through optimizing business processes.

IT and business departments

Departments can model their processes easily using a BPM notation; IT departments create the necessary system procedures as well in the graphical interface and link them directly with the business processes.



4 Facts about X4 BPM Suite

- ✓ X4 Designer - Business processes are graphically modeled and directly implemented
- ✓ X4 Enterprise Service Bus - Seamless integration of all IT systems
- ✓ X4 BAM - Information and documentation regarding operations, processes and transactions
- ✓ Human Workflows - Actively integrate people into business processes

From the specialist department to IT Operations

Modeling

The X4 Process Designer contained in the BPM Suite makes it possible to depict and document business processes easily and intuitively using a graphical BPM notation. The modeled processes remain understandable and interpretable beyond company boundaries.



Executing

Different data structures can be connected to each other by drag&drop using the graphical X4 Mapping Designer. The data can be transformed as needed. Users have a flexible tool for connecting data. The Enterprise Service Bus (X4 ESB) serves as a basis for a service-oriented architecture.



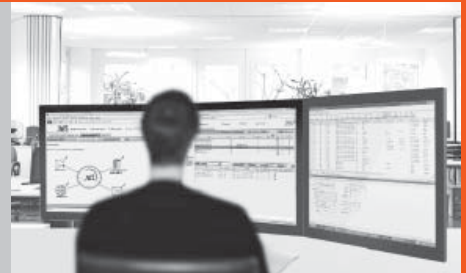
Managing

The modeled processes are deployed to the IT environment and connected to the heterogeneous IT systems using the X4 ESB. The X4 BPM Suite includes a wide range of adapter solutions (interfaces). The X4 ESB's process engine ensures that processes can be directly transferred and executed.



Monitoring

X4 Business Activity Monitoring (BAM) allows the proactive monitoring and evaluation of daily business operations. During process execution, all relevant key figures are identified and displayed in clear management dashboards. These later form the basis for analysis and further development of the processes.



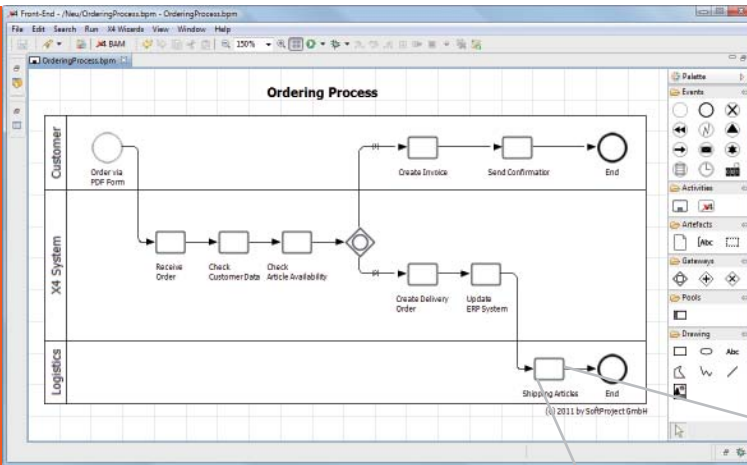
Optimizing

The knowledge gained during monitoring and analysis is used to continuously optimize and develop processes. Based on the analysis, appropriate measures and strategies can be derived for process optimization.



Modeling processes with the X4 Designer

Creating business processes without programming



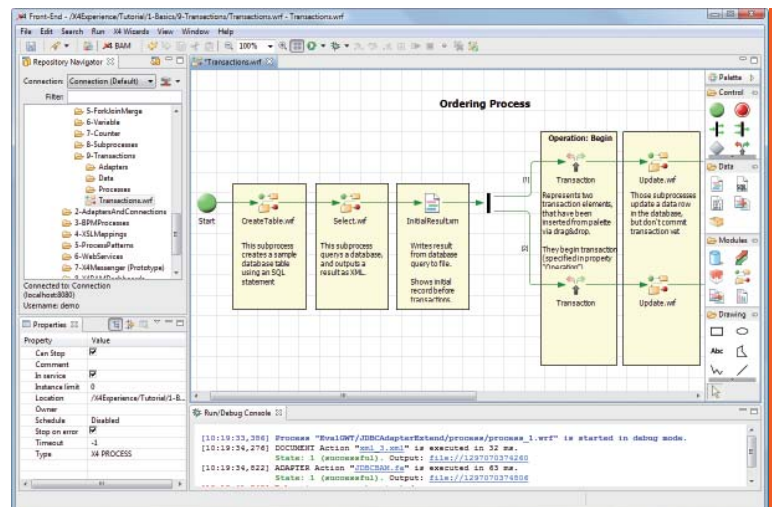
The process designer included in the X4 BPM Suite makes it possible to depict and document company procedures using a graphical notation.

All relevant building components can be selected by drag&drop from the pallet in the drawing area and be directly tested once they have been parameterized.

Implement processes with a mouse click

The collaboration between IT and the specialist departments takes place in the common development environment - direct, secure and with significantly less administrative effort.

Business process models immediately become executable technical processes.



4 Facts about the X4 Designer

- ✓ Even complex business processes can be easily modeled
- ✓ Modeled processes can be tested and simulated
- ✓ Processes can be implemented without further programming
- ✓ Includes ready-to-use industry-specific process templates

X4 Business Activity Monitoring (BAM)

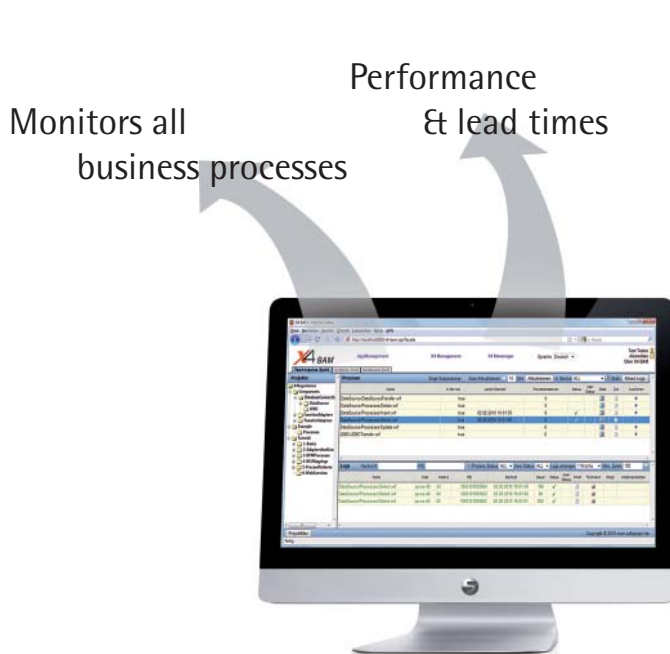
Monitoring, Documentation and Analysis

Business-related data, such as resource utilization, lead and down times and latent periods, is presented consistently and clearly in a management dashboard using a web interface.

X4 BAM provides detailed information on the status and the results of various operations, processes and transactions so that business decisions can be prepared and problems can be quickly identified.

The documentation of tasks, processes and information is an essential component of successful process management.

As a part of quality assurance, the X4 BPM Suite automatically creates process documentation. Staff and decision-makers can access necessary information at any time and from anywhere.



4 Facts about X4 BAM

- ✓ Monitors all business processes
- ✓ Determines and shows key figures in dashboards, also for mobile devices
- ✓ Controls and configures processes (relaunching processes, clearing, etc.)
- ✓ Calls up process documentation and creates specialized reports

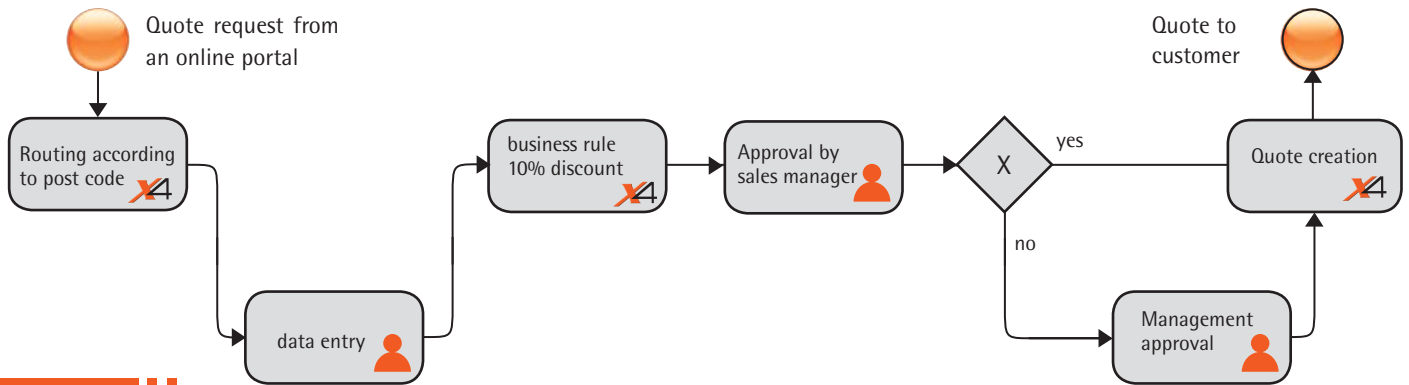
X4 Human Workflow

Integrate users and employees into processes

Human workflows are typically long-running, status-oriented business processes.

They describe the task-oriented handling of process steps and are made up of personalized, configurable processes (tasks). Some tasks are assigned to individual persons.

The related process waits until the task has been completed. Users are integrated into the processes using software interfaces that fit the respective purpose and make processing and release much easier for the parties involved.



4 Facts about X4 Human Workflow

- ✓ Integration of people into semi-automated interactive processes
- ✓ Configurable task list with notification of employees (role-based task distribution)
- ✓ Interfaces either as a browser or as a desktop-based application
- ✓ Supports long-running, status-oriented processes

X4 Enterprise Service Bus

Integrating all relevant systems into the value chain

The X4 Enterprise Service Bus (ESB) is a major component of the X4 BPM Suite. Using standardized adapters and interfaces, the ESB integrates heterogeneous IT systems

and landscapes into a homogeneous overall system across multiple departments or even companies.

X4 Mapping Designer

Information is the heart of every business transaction. The information must be put into a standard format. With the X4 Mapping Designer, various data structures can be connected to each other in a graphical view. The information is transformed using XSLT. X4 Users are therefore provided with a flexible tool for linking data structures from practically any IT system.

X4 Adapter - immediately usable

The X4 BPM Suite comes with a wide range of standard adapters to integrate applications and data in heterogeneous IT landscapes. Over 200 available adapters make it possible to connect IT infrastructures. The adapters can be interactively parameterized and inserted into the modeled process by drag&drop.

Adapter Development Kit

Further adapters can be created and existing functionalities expanded with the Adapter Development Kit (ADK) using a standardized procedure.

In order to avoid mistakes, wizards are provided to assist the user with configuration.



About SoftProject

SoftProject GmbH has developed the X4 BPM Suite for automating business processes.

A wide variety of services complete the company's profile. From strategic consulting to seminars through system implementation, SoftProject's experienced team is available to assist customers.

SoftProject is an independent software house based in Ettlingen, Germany. The company was founded in 2000 in the Karlsruhe technology region and currently employs over 75 people.

Partners

Leading German and international system and consulting companies are SoftProject partners and use the X4 BPM

Suite successfully in their projects or have integrated it into their own products.

Customers

SoftProject's international customer base includes insurers, utilities, banks as well as industrial and logistics companies, among others. SoftProject's solutions make it easier for companies to assert themselves on the market using efficient business processes, now and in the future.

X4 Academy

SoftProject's X4 Academy offers companies hands-on seminars for X4 solutions and current relevant topics. All seminars and workshops can be found at www.x4-academy.de

SoftProject on the Web

SoftProject Webpage:
www.softproject.de

X4 User group on Xing:
www.xing.com/net/x4



4 Facts about zu SoftProject

- ✓ Over 10 years' experience in automating business processes
- ✓ Has developed their own X4 solutions for a wide range of different industries
- ✓ X4 Academy with seminars and workshops for different business sectors
- ✓ Qualified support for technical assistance



SoftProject

Software wam
Software

X4 BPM Suite - The technology

Scalability and reliability

The X4 BPM Suite supports multithreading and multi-processor systems. Clustering, instantiation, load balancing and failover are also possible.

Runtime environment

The X4 BPM Suite runs on any JavaEE-compliant server, but does not necessarily require a server. 'Stand alone' X4 processes can also be made available in the Java Virtual Machine.

Transactions

The X4 supports a full range of transactions when used as the basis for an application server.



X4 Solutions

Basis for innovative solutions

For over 10 years, SoftProject has been developing innovative software solutions based on X4 technology for a wide range of business sectors and requirements. X4 solutions are proven and can be implemented without further programming.



X4 Solutions are also available as a service from the SoftProject computer center



Digitalize documents



Automated document verification



Credit check



Business processes for mobile devices



Electronic data exchange



SAP Integration without media interruption



X4 solutions are used by more than 300 customers all over the world.
Here is an excerpt of our international customer base

AdmiralDirekt • AIOI (Toyota Versicherung) • ARAG • arvato infoscore • ASS.TEC • AXA Assistance • Bank für Sozialwirtschaft • BMW Group • Bosch • British Library • Cadmus • carexpert • CCP Software • Chartis Europe • Chemion Logistik • Condor • DEKRA • delvin (IT-Tochter der BBV) • Deutsche Post • Direct Line • DKB Deutsche Kreditbank • DLR Deutsches Zentrum für Luft- und Raumfahrt • Dynevo (Bayer Gruppe) • Efficient Forms • ELE Emscher Lippe Energie • Erdgas Südwest • FM Global • FORMAXX • Frischdienst Union • GTÜ • Haftpflichtkasse Darmstadt • HanseMercur Allgemeine Versicherung AG • Hettich Zentrifugen • HONICO • IDS • INFORM • Janitos • Lekkerland • MedicalBizz • Merck • NETdental • Nürnberger Allgemeine Versicherung • OMICRON • Optimatic • QBE Insurance • Qioptiq Photonics • Rainbow International • R+V Versicherung • Realec Technologies • RWE • Sartorius • SGL CARBON • Siemens AG • Signal Iduna • Skandia Leben • Smiths Medical • SOVAG • STOBAG • Sysdex • Testo • The University of Sydney • TÜV • Vattenfall

X4 BPM Suite - The platform for all business processes



SoftProject GmbH
Am Erlengraben 3
76275 Ettlingen (Germany)
Fon +49 (0) 7243/561 75-0
Fax +49 (0) 7243/561 75 199
E-Mail: info@softproject.de

www.softproject.de