

Innovation

tin plated Tubular Compression Cable lugs

- direct connection to copper bars
- longitudinally sealed



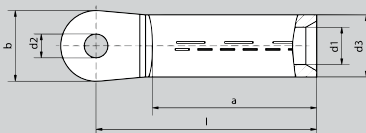
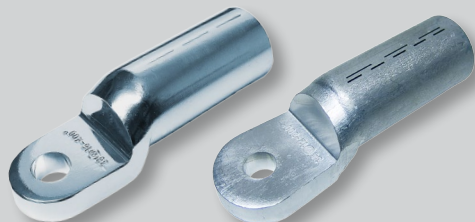
WEITKOWITZ
Kabelschuhe und Werkzeuge GmbH
Woltorfer Straße 125
31224 Peine / Germany

phone +49 (0) 5171 7061 - 0
fax +49 (0) 5171 7061 -58

e-mail info@weitkowitz.de
web www.weitkowitz.de

Aluminium Cable Lugs

DIN 46329, for aluminium conductors, train-relieved and longitudinally sealed
material: Al 99,5, surface: tin plated or uncoated, sleeves are prefilled with compound



*rm = round stranded
sm = sector stranded

**se = sector solid
(Sector solid shaped conductors must be rounded with dies for round-forming.)

cross section mm ² rm/sm*	se**	flat hole M	art.-no. tin plated	die code	dimensions in mm							weight 100 pcs./kg	packing unit (pcs.)	art.-no. uncoated	tool recommendation		
					d1	d3	d2	b	l	a	AP 10, HHW 10, HPW 10				APW 20, HHW 20, HPW 20	DW 6/70	HPW 17, APW 30, HHW 30
16***	25	8	22312	12	5,8	8,4	20	53	30	1,34	50	22212	AP 10, HHW 10, HPW 10	APW 20, HHW 20, HPW 20	DW 6/70	HPW 17, APW 30, HHW 30	
		10	22313				10,5				1,30	50					22213
25	35	8	22316	12	6,8	8,4	25	53	30	1,40	50	22216					
		10	22317				10,5			1,36	50	22217					
		12	22318				13			1,31	50	22218					
35	50	8	22321	14	8,0	8,4	25	65	42	2,03	50	22221					
		10	22322				10,5			1,99	50	22222					
		12	22323				13			1,94	50	22223					
50	70	8	22325	16	9,8	8,4	25	65	42	2,59	25	22225					
		10	22326				10,5			2,55	25	22226					
		12	22327				13			2,48	25	22227					
70	95	8	22330	18	11,2	8,4	25	75	52	3,68	25	22230					
		10	22331				10,5			3,63	25	22231					
		12	22332				13			3,56	25	22232					
95	120	8	22335	22	13,2	22	8,4	25	81	5,81	10	22235					
		10	22336				10,5			5,75	10	22236					
		12	22337				13			5,66	10	22237					
120	150	10	22340	22	14,7	23	10,5	30	86	6,89	10	22240					
		12	22341				13			6,79	10	22241					
		16	22342				17			5,46	10	22242					
150	185	10	22345	25	16,3	25	10,5	30	90	60	8,74	10	22245				
		12	22346				13			8,62	10	22246					
		16	22347				17			8,39	10	22247					
		20	22348				21			8,09	10	22248					
3,5	240	10	22349	28	18,3	28,5	10,5	30	91	60	11,00	10	22249				
		12	22350				13			10,89	10	22250					
		16	22351				17			10,48	10	22251					
		20	22352				21			10,18	10	22252					
240	300	10	22354	32	21	32	10,5	38	106	70	16,24	10	22254				
		12	22355				13			16,08	10	22255					
		16	22356				17			15,76	10	22256					
		20	22357				21			15,35	10	22257					
300	-	12	22360	34	23,3	34	13	38	106	70	17,76	5	22260				
		16	22361				17			17,38	5	22261					
		20	22362				21			16,90	5	22262					
400	-	12	22364	38	26	38,5	13	38	116	73	25,98	5	22264				
		16	22366				17			25,57	5	22266					
		20	22368				21			25,05	5	22268					
500	-	12	22370	44	29	44	13	44	122	79	36,04	5	22270				
		16	22372				17			35,60	5	22272					
		20	22373				21			35,04	5	22273					

