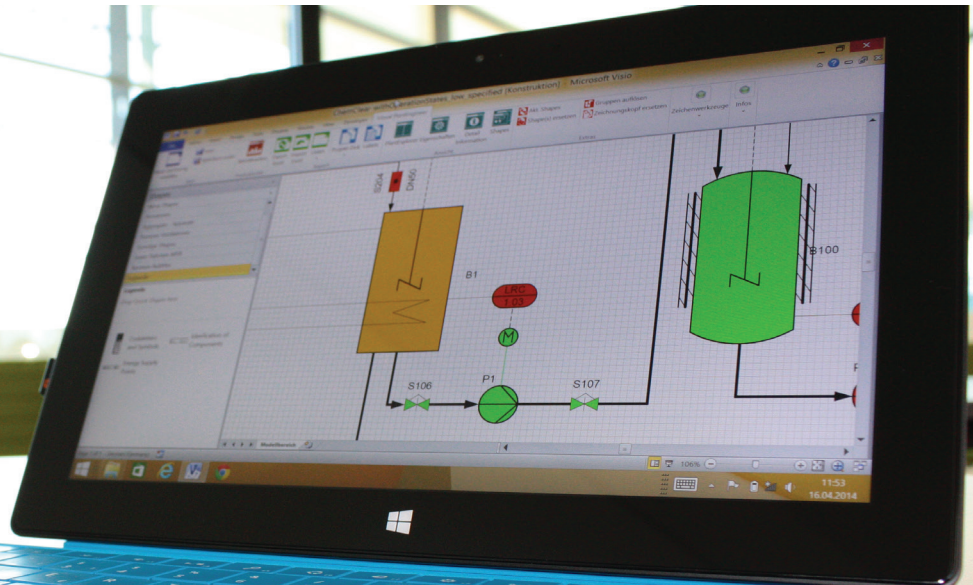


## P&ID software for engineers

Create intelligent process flow diagrams and reports intuitively with PlantEngineer



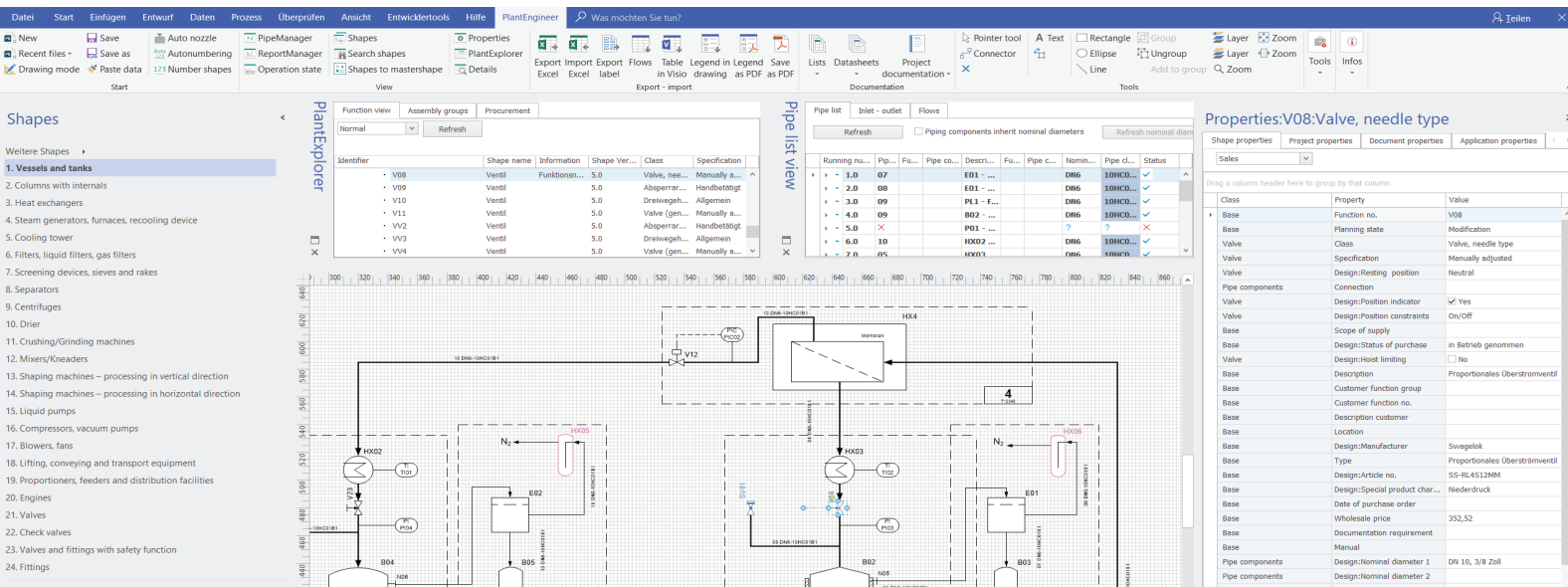
## PlantEngineer - Efficient and cost-effective P&IDs on the basis of Microsoft Visio®

Traditional CAD solutions and standalone solutions are often inflexible and expensive. PlantEngineer is an integrated, object-oriented P&ID application for engineering teams which makes possible an efficient and transparent engineering and documentation process in the construction of process plants.

PlantEngineer is based on Microsoft Visio®. This means it offers many advantages – for example, minimal need for training, simple data exchange using Microsoft Excel®, commissioning documentation in Microsoft Word®, multi-linguality, as well as simple integration into an existing IT infrastructure.

### Planning as a team means:

- 1.** PlantEngineer does away with the bottleneck “central documentation section”  
The implementation of ideas is carried out already in the company, it is paperless and immediately accessible. The use of different versions makes editing easy. Data can be exchanged directly with Microsoft Word®, Excel® and Access®.
- 2.** The amount of training required is reduced thanks familiar Microsoft user interface  
Only one day of training is required for learning how to work with the application, and no prior knowledge of CAD is required. Quickly take up again where you left off after an interruption in work.
- 3.** Automatic creation of commissioning handbooks  
Standardization of documents and concepts across sections of the company. Multilingual creation of documents and lists.
- 4.** Time-savings thanks to numerous intelligent functions and conveniences  
Up to 50% time saving due to inclusion of intelligent symbols for the creation of P&IDs. ERP interface, Excel® lists, and commissioning documents in Word®, avoidance of errors and redundant data, and no media disruption.



The construction of process plants is simplified thanks to standardized P&IDs and symbol according to industry standards DIN, ISO, PIP and ANSI

PlantEngineer has been developed in close cooperation with planners, designers and operators of process plants. With PlantEngineer there is finally a practice-oriented solution that offers all the necessary interfaces for detail engineering. This brings many advantages:

- Task-related views
- Standardization of concepts throughout the company
- Minimal costs for licenses, training and operation
- A single tool for basic and detail engineering, installation and commissioning
- ERP interface, Excel® and Word®, structural view for ease of navigation
- Creation of Excel-lists: I&C, apparatus and aggregates, material flow
- Automated filtering and sorting
- Multilingual for global teams
- Highlight function for construction and commissioning status
- Simple integration into pre-existing IT
- Uniform and consistent data from sales to operation
- Avoidance of redundant data

### Areas of application

- Chemical plants
- Pharmaceutical plants
- Water processing plants
- Shipyards
- Power plants
- Surface coating technology
- Biogas facilities
- Oil refineries
- Food technology
- Special plant engineering

### References

- Dürr Systems
- Chemiewerk Bad Köstritz
- Currenta
- Lindauer Dornier
- Elster Honeywell Group
- Brockhaus Lennetal
- Neuhaus Neotec
- Schrader Verfahrenstechnik
- thermea. Energiesysteme
- HYUNDAI Rotem

### Functions & symbol libraries for

- ANSI/ISA-5.1-2009
- Piping and instrumentation diagrams (ISO 10628)
- Space technology facilities (EN 12792/ DIN 1946-1)
- Refrigerating plants & heat pumps (EN 1861)
- Vacuum technology (DIN 28401)
- Piping components (DIN 28000)

Microsoft  
Partner

Silver Application Development

Microsoft  
Partner Network

2011 PARTNER OF THE YEAR  
Visio  
Finalist



DEXPI Data Exchange in  
Process Industry

X-Visual Technologies GmbH | James-Franck-Str. 15 | 12489 Berlin | T +49 30 6392 6125 | F +49 30 6392 6127 | info@x-visual.com

© 2018 X-Visual Technologies GmbH. All rights reserved. All labels and brands are property of their respective owners.

www.x-visual.com

**Simplify Your Engineering**