



# 2017 Company Presentation



# Contents

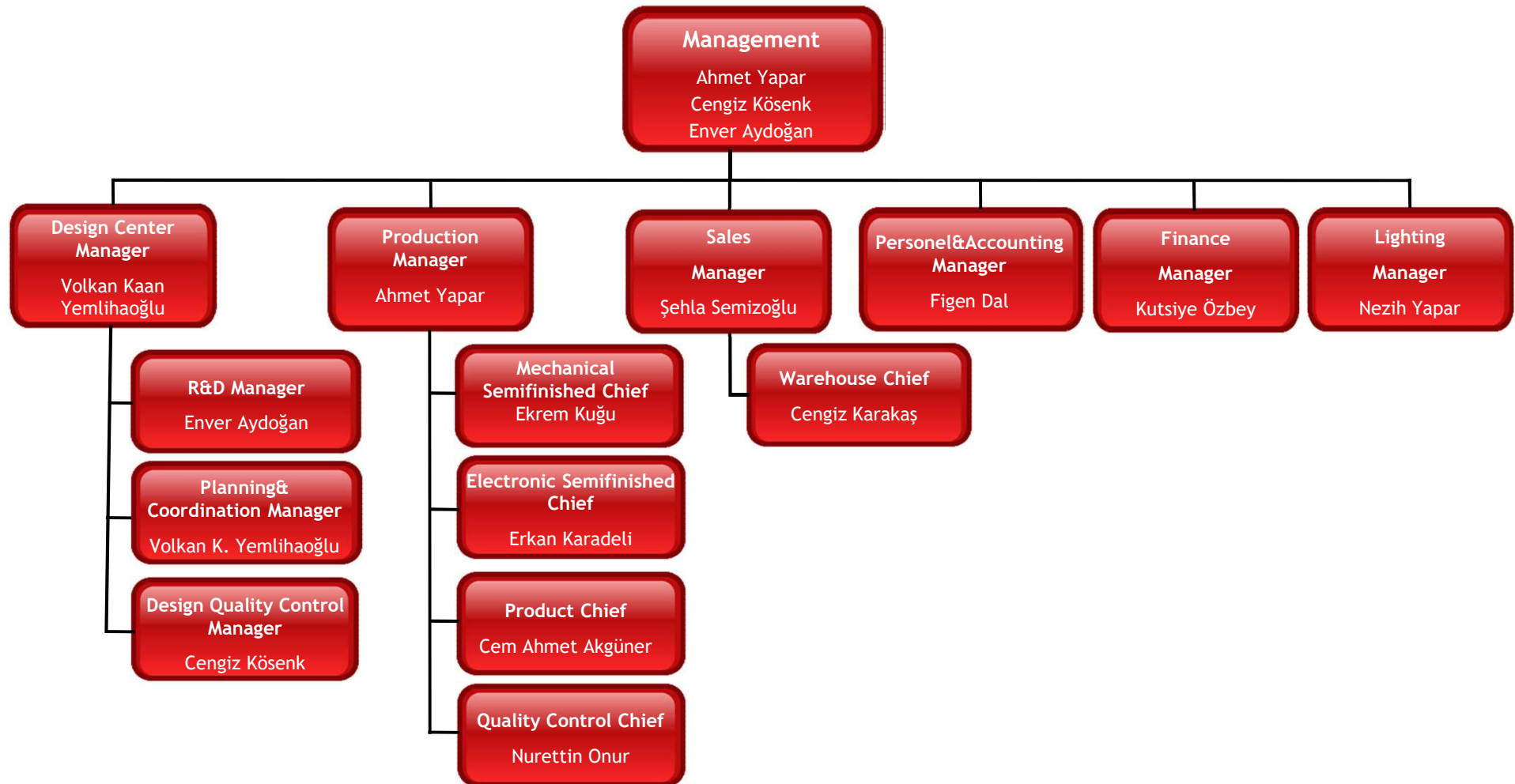
- 1 **Company Profile**
- 2 **Competition Advantages**
- 3 **Products and Industries**
- 4 **Future Planning**

# Current Situation

- Rank No.1 among domestic thermostat manufacturers in terms of sales quantity
- Industrial automation controller manufacturer, with the capabilities of developing and manufacturing;
- With the strongest R&D experts in domestic industrial automation field;
- One of the most promising and innovative corporate in Turkey.
- Based in Istanbul Umraniye with 100 employees



# Company Structure



# Corporate Culture

**Our Mission:** We dedicated ourselves becoming one of the world's top industrial automation product & solution providers.

## Our Values:

### Customer First

We try our best to fulfill the customer needs.

### Respect & Honesty

Our basic principles for dealing with customers are respect and honesty.

### Team Spirit

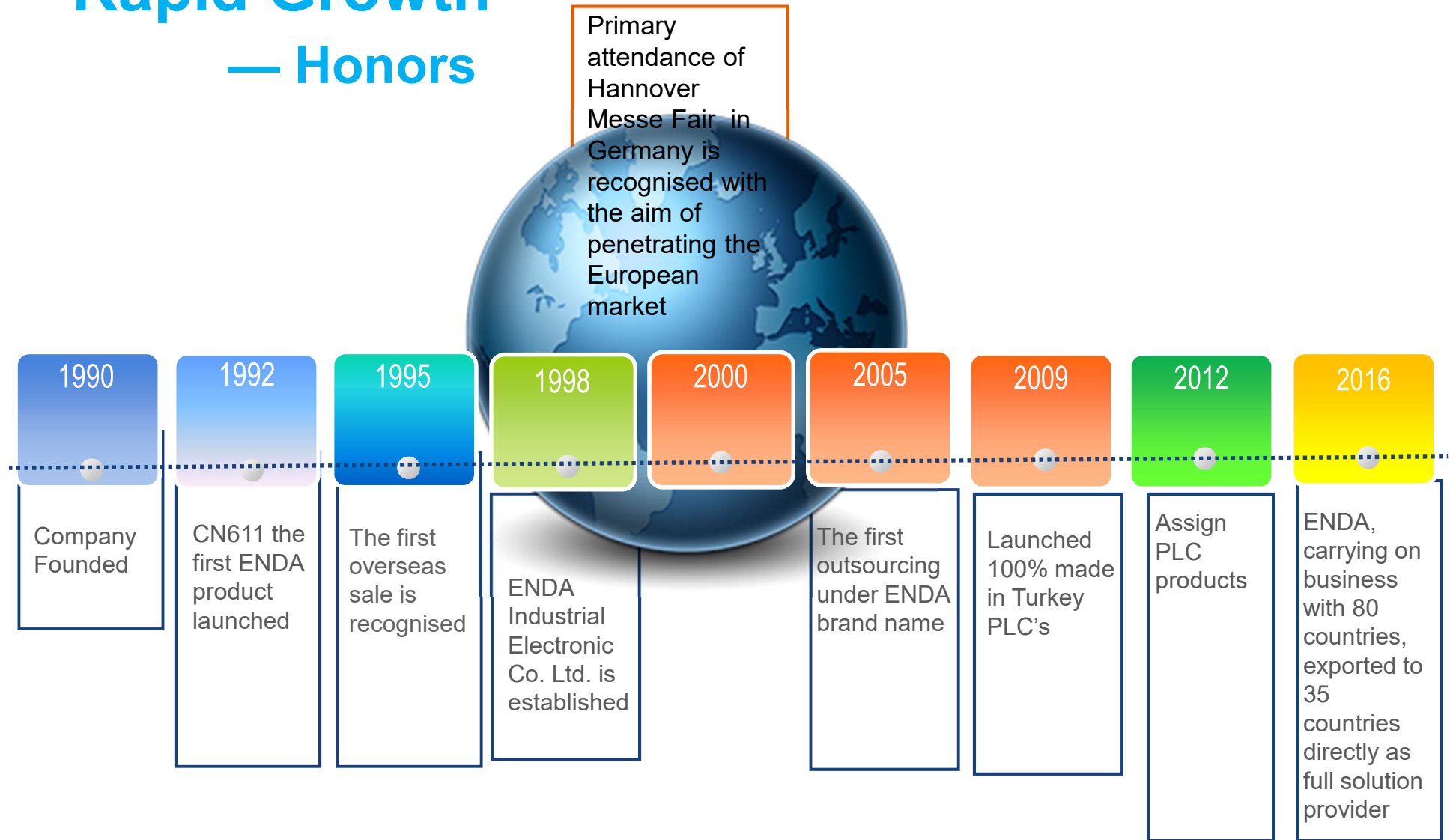
Effective management is to make each and every employee's effort an advantage of the company as a whole, and to prevent anyone's weakness from detracting the company strength.

### Constant Innovation

We dedicate constant efforts to improve processes and achieve product & management innovation.



# Rapid Growth — Honors



# Contents

- 1 **Company Profile**
- 2 **Competition Advantages**
- 3 **Products and Industries**
- 4 **Future Planning**

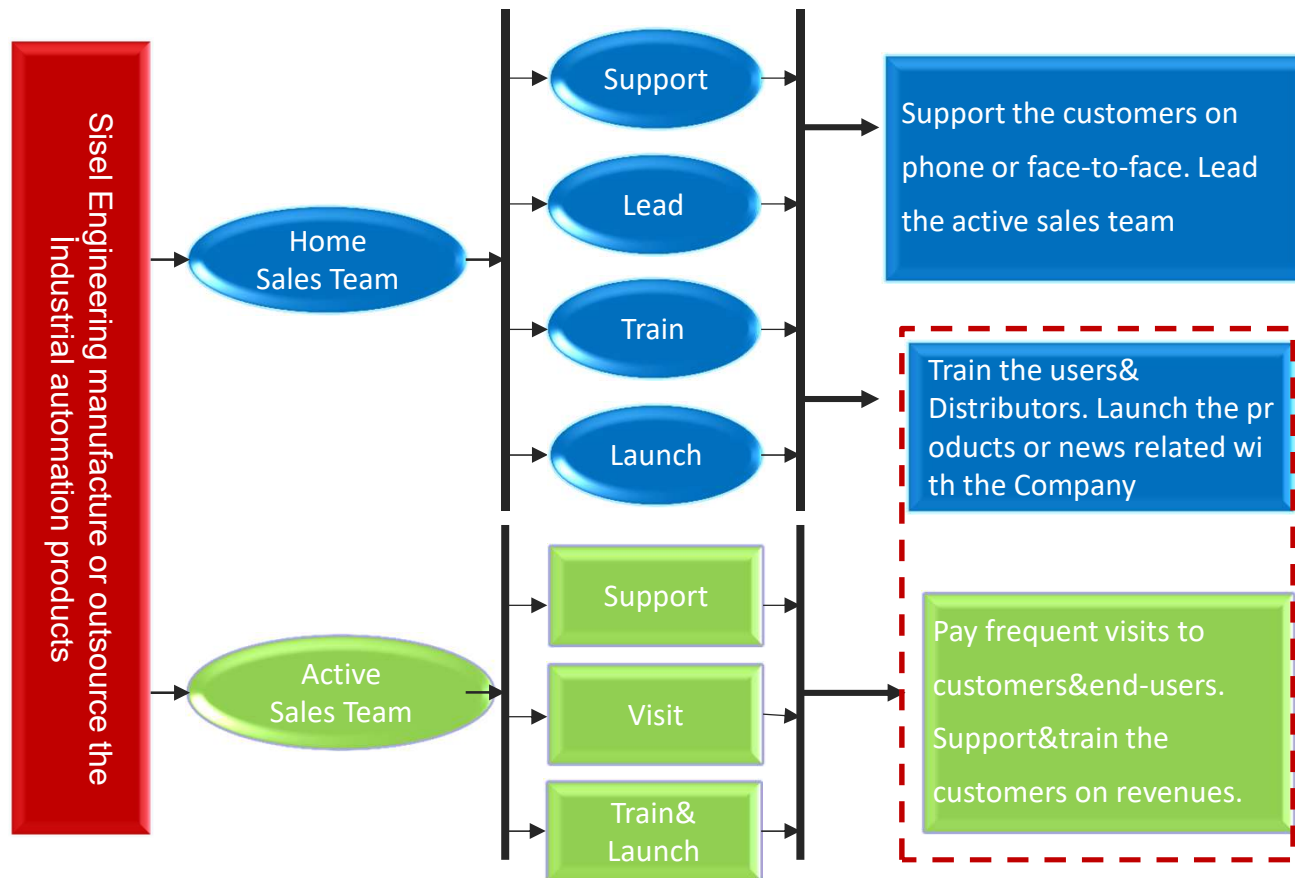


# Excellent Team

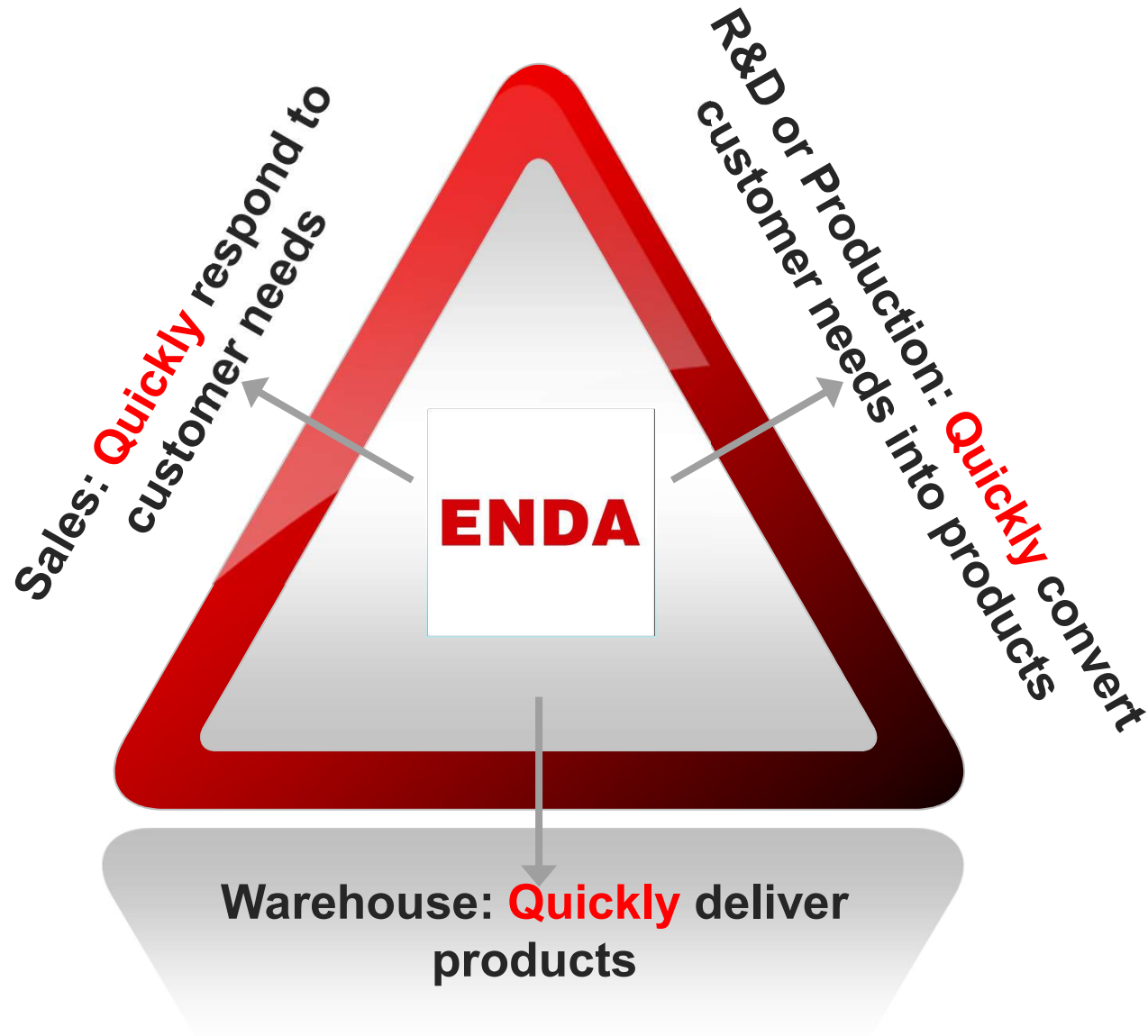




## From Sisel Engineering to end-users



# Quick Response



# Quick Respond

## — Perfect Network



27 distributors in overseas

21 distributors in domestic market

# Contents

- 1 **Company Profile**
- 2 **Competition Advantages**
- 3 **Products and Industries**
- 4 **Future Planning**

# Product Overview



- Temperature Controllers
- Process Controllers
- Humidity & Temperature
- Defrost Controllers
- Counters & Tachometers
- Timers
- Digital Potentiometers
- Solid State Relays
- Converters
- Indicators
- Protection Relays
- Special Purpose Controllers
- Human Machine Interface
- Accessories

# Temperature Controllers

- Analog – AT411, ATC9311
- Digital On-Off – ET2001, ET2411, ET2412, ET4403, ET5411, ET5412
- Digital PID – ET4402, ET2011, ET4420, ET7420, ET8420, ET9420



Analog

Easy-to-use, basic temperature controller with analogue dial setting



Digital On-Off

The simplest type of controllers featuring on-off control action designed to provide best solution for simple applications but at a price suited to On/Off applications



Digital PID

PID controllers provide very tight control but the PID algorithm requires tuning. Self tune controllers provide that function

# Process Controllers



- Profile – **EPC9513**, EPC4420, EPC7420, EPC8420, EPC9420
- Universal – **EUC9526**, EU4420, EU7420, EU8420, EU9420
- Modular – **ET1124**, ET1122, ET1112
- Motorized Valve – ET4410



Profile

Simple profile control that includes times ramp/dwell set point profiling



Universal

The perfect solution for the measurement and control of physical parameters such as temperature, pressure and humidity



Modular

Slim-line modular process controller



Motorized  
valve

Ideal for applications where motorized valve control is required



# Humidity & Temperature

- Sensors – ESHT102, ESHT102-W, ESHT102-DC, ESHT102-CB, EHTS-W, EHTS-DC, EHTC-CB
- Controller – EHTC7425A
- Sensor Controllers – EHTC-W, EHTC-DC, EHTC-CB



Sensors

Two models ESHT and EHTS available for wall, cabled, duct mounting



Controller

- Heating or cooling control
- Drying or moistening control
- Fan timer control
- Rotator timer control



Sensor

Controllers

- Selectable 0-20mA, 4-20mA, 0-10V or 1-5V output
- Built-In Display Indicate Humidity and Temperature
- Relay outputs for temperature and humidity
- RS-485 ModBus protocol

# Defrost Controllers

## Defrost Controller:

➤ Powerful and user friendly defrost controllers for controlling the sequence of events that occur during systyem defrost cycles

- 😊 Models with off-cycle, electrical or hot gas defrost
- 😊 NTC probe
- 😊 RS-485 comms
- 😊 Warning tones
- 😊 Digital input for external alarm
- 😊 Compressor safet function
- 😊 ° C or ° F indication
- 😊 ENDAKEY for quick and easy programming
- 😊 Models with DIN-rail or flush panel mounted



# Counter & Tachometer

## ECH & ETS :

- ETS – Tachometer
- ECH – Counter & Tachometers



ETS1410

- 😊 Models with one/two relay and open collector outputs
- 😊 Total and batch function in counter model
- 😊 Functional output modes
- 😊 RS-485 ModBus protocol



ECH4400



ECH7700

# Timers

## Analog & Digital Timer:

➤ Cover almost every possible user requirement for timing control

- 😊 Analog and digital timers
- 😊 Multiple time ranges and operating modes
- 😊 Slim line to save space



# Digital Potentiometers

**Ideal choice to meet the all universal output requirements:**

➤ EDP – Digital Potentiometer



- 😊 Accurate control of motors' speed
- 😊 Universal output (0-10V, 0-20mA and 4-20mA)
- 😊 Soft-on and Soft-off functions
- 😊 RS-485 comms
- 😊 Synchronous running of potentiometers via RS-485 comms

# Solid State Relays

Comprehensive range of solid state relays with integrated heat-sinks:

## Zero Cross & Panel mounted;

- EPAA1 & EPDA1 – 1-Phase
- EPAA2 & EPDA2 – 2 x Solid State Relay
- EPAA3 & EPDA3 – 3-Phase

## Zero Cross, Rail mounted & Integrated heatsink;

- ERAA1 & ERDA1 – 1-Phase
- ERAA2 & ERDA2 – 2 x Solid State Relay
- EPAA3 & EPDA3 – 3-Phase

## Phase Angle & Rail mounted;

- ERCA1 – Analog trigger (4-20mA)
- ERVA1 – Analog trigger (0-10V DC)
- ERPA – Power Regulator (Input signal - 0/4-20mA, 0/1-5V, 0/2-10V, 1/10kΩ)

## Phase Angle & Wall mounted;

- EPAC-W – Vibration Controller
- EPAC-W-F - Vibration Controller with selectable vibration frequency



# Converters

## Multifunctional, flexible and precise signal converters:

- ECCC – Current Converter
- ECTC, ECTC-TR – Temperature Converter
- ECSC – Signal Converter
- ECVC – Voltage Converter



- ☺ TH35 rail mounting
- ☺ Safety by 3-way electrical isolation
- ☺ Models with isolated RS-485 comms
- ☺ Temperature signal converters for TC, PT100 & NTC sensor
- ☺ Standard signal converter with configurable mA, mV, or V input and mA or V output
- ☺ Measuring converters for current or voltage AC,DC or True RMS values
- ☺ Configurable scale for standard signal & temperature converters



# Indicators

**Monitor and control many automation and process control applications**

- EI2410 & ETI741 – Temperature Indicator
- EI2041 & EI7041 – Process Indicator
- EPA – Ammeter
- EPV – Voltmeter



- ☺ Models ideal for measuring, displaying and judging analog values such as AC/DC voltages / currents or temperature
- ☺ DIN-rail or flush-panel mounted ammeters & voltmeters
- ☺ Optional isolated RS-485 comms for ammeters & voltmeters

# Protection Relay

## Protect your system:

- EPMR – Motor Protection Relay
- EPVR – Voltage Protection Relay
- EPCR – Current Protection Relay



# Special Purpose Controllers

- ET1413, ET1413A – Car air conditioning
- ET1413R – Radiator controller
- EID7422 – Differential temperature controller with analog input
- ETDC2422 - Differential temperature controller with NTC probe input
- EH7C7425A – Incubator temperature controller
- ET2413K - Incubator temperature controller
- EM7C2412 – Milk tank controller
- ERFA – Fan speed controller
- ECC731 – Current controller



# Human Machine Interface

## MT Family:

➤ Perform on-site data collection, processing, monitoring and output in a quick, effective and secure way with HMI



- 😊 High resolution
- 😊 TFT monitor
- 😊 Ethernet port
- 😊 32bit up to 400 MHz CPU
- 😊 Real time clock
- 😊 1 USB Host Port
- 😊 1 RS232 and 1 RS232/RS485 support communication port



# Industries



# Industry Applications — Injection Molding Machine





# Industry Applications



- Heating
  - Tray/bag sealers
  - Heat shrink wrapping
  - Food heat/process
  - Basic test /lab equipment
  - Warm storage – vehicle
  - General industrial – basic

- Cooling
  - Commercial refrigeration
  - Drink chillers
  - Cold storage
    - building
    - vehicle
  - Food manufacturing process - chill
  - Air conditioners



# Contents

- 1 **Company Profile**
- 2 **Competition Advantages**
- 3 **Products and Industries**
- 4 **Future Planning**

## For manufacturing line

- 5.000 m<sup>2</sup> manufacturing line
- Increase the sales quantity



Installation line



Raw material



Installation line



Mechanical Workshop



Mechanical Workshop

**Teşekkür Ederiz...**