

S-Bt Smart BioTherm, compact CO₂ Incubator

DESCRIPTION

S-Bt Smart BioTherm is designed for work in the areas of cell biology (operations with animal cell cultures and tissues), molecular biology (DNA/RNA reaction analysis, hybridization reactions), biotechnology (synthesis of target proteins and other molecules), immunology (synthesis of antibodies and other proteins of immune system). Unit provides a six-sided heating: the heating elements are located on the walls and on the door, thus providing excellent uniform temperature distribution, regardless of external factors, such as ambient temperature and positioning of the device.

Built-in infrared CO₂-sensor allows accurate control of the CO₂ level. The sensor makes measurement non-sensitive to changes in temperature and humidity inside the incubator.

The chamber is made of stainless steel with smoothed seams to minimize contamination and to facilitate cleaning.

S-Bt is equipped with a UV air recirculation system — 1 UV lamp and a fan are mounted behind the rear wall, providing decontamination of the working volume.

A convenient access port is built in the wall of the incubator for easy output of wire sensors or devices' installed inside. The access port is heated independently to prevent formation of condensate.

Unit is equipped with error tracing and alarm systems, which significantly lower potential risks during operation.

Unit is equipped with a "black box" system that records temperature, humidity and CO₂ levels, as well as statuses for door opening, UV lamp, fan and errors, to the inner memory.

Bluetooth connection to PC is available.

SPECIFICATIONS

Chamber Material	Stainless steel (1 mm)
Temperature setting range	+25°C ... +60°C
Temperature stability	±0.1°C
Temperature uniformity @37°C	±0.3°C
Working volume	46 litres
Number of shelves	3 (max. 6)
Inner door	Glass
Relative humidity	>90% @ 37°C
Humidity delivery	Water bath
CO ₂ control range*	0 – 20%
CO ₂ sensor	Infrared sensor
Temperature and CO ₂ level input	Digital
UV lamp	1 × 6 W, TUV G6T5
Data transfer	Wireless
Access port	1 (ø 26 mm)
Working voltage	230V, 50/60 Hz; 115 V, 50/60 Hz
Weight	37.7 kg
Dimensions (L × W × H)	400 × 410 × 580 mm

* — at set temperature from ambient to 50°C



NEW PRODUCT



APPLICATION AREAS:

- Cell biology: operations with animal cell cultures and tissues
- Molecular biology: DNA/RNA reaction analysis, hybridization reactions
- Biotechnology: synthesis of target proteins and other molecules
- Immunology: synthesis of antibodies and other proteins of immune system

FEATURES:

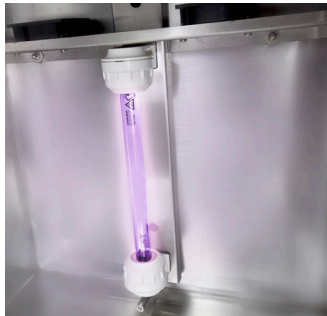
- Six-sided heating provides uniform distribution of the temperature inside the chamber
- Infrared CO₂ sensor, non-sensitive to temperature and humidity changes
- UV recirculation system for decontamination cycles
- Bluetooth data transfer to PC
- «Black box» parameter logging system
- Error tracing and alarm system
- Separately heated lockable port for chamber access for cables.

S-Bt Smart BioTherm, compact CO₂ Incubator

Simple CO₂ tank connection



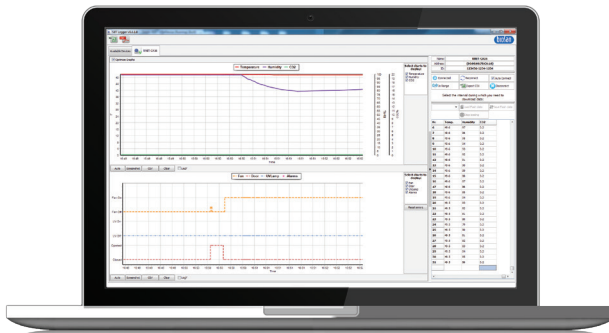
Air UV recirculation system in the chamber



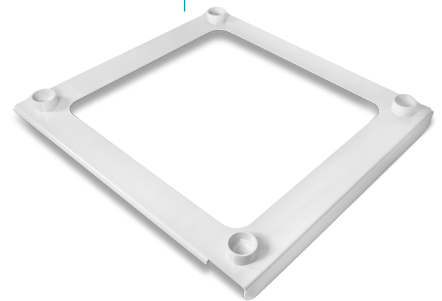
Gas purification filter



PC software



Incubator stacking device



ORDERING INFORMATION:

S-Bt Smart BioTherm

Optional accessories

Shelf

PC software and Bluetooth adapter

Incubator stacking device

Cat. number 

BS-010425-A01

BS-010425-AK

BS-010425-BK

BS-010425-CK