

# FTA-2i, Aspirator with Trap Flask

## DESCRIPTION

Aspirator with trap flask **FTA-2i** is designed for aspiration or removal of alcohol, buffer and liquid from reaction vessels (e.g. during DNA/RNA purification or other macromolecule reprecipitation techniques).

The device can be applied for routine operations of cells washing from culture medium and resuspension in buffer. Aspirator operation principle is based on creating negative pressure in trapping flask using built-in microcompressor. The collecting tip is connected with polyethylene tube to the trapping flask. Liquid is removed from the reaction vessel when the collecting tip is in contact with the solution. A tube holder-organizer is conveniently located at **FTA-2i** right hand side; it accommodates two 1.5–2 ml tube slots (e.g. for hydrochloric acid solution and distillate) necessary for collecting tip washing and storing, so that a tip can be re-used.

**FTA-2i** is equipped with a level sensor that detects excess liquid with consequential prevention of the overflow by automatically switching off the pump with a sounding alarm indication.

The devices comes, as standard, with vacuum regulation control knob that allows to smoothly select a preferable aspiration speed.

Additionally, a hand operator can be purchased for a more comfortable usability of the new accessories (see list below). The autoclavable hand operator features a pressure sensitive button that can control the aspiration speed.

### COMMON APPLICATIONS:

Removal and disposal of liquid from various reaction vessels

## SPECIFICATIONS

Aspiration speed	up to 10 l/min (air)
Vacuum regulation	-200 to -800 mbar (adjustable)
Trap flask	2 L, polypropylene (autoclavable)
Liquid level sensor type	Invasive
Overflow protection	
Motor stops, light and sound signal	
Filtration: Hydrophobic microbiologic filter 2200/02 eliminates risk of contamination from the trap flask by bacteria, viruses and infected particles	
Filter pore diameter	0.027 micron
Input current/power consumption	12 V, 1 A / 10.8 W
External power supply	Input AC 100-240V 50/60 Hz; Output DC 12 V
Dimensions (W×D×H)	185 × 290 × 390 mm
Weight*	1.85 kg

\* — Accurate within ±10%.



## NEW PRODUCT

### OVERFLOW PROTECTION



### LIQUID LEVEL SENSOR

### 2 LITRES



Hydrophobic microbiologic filter



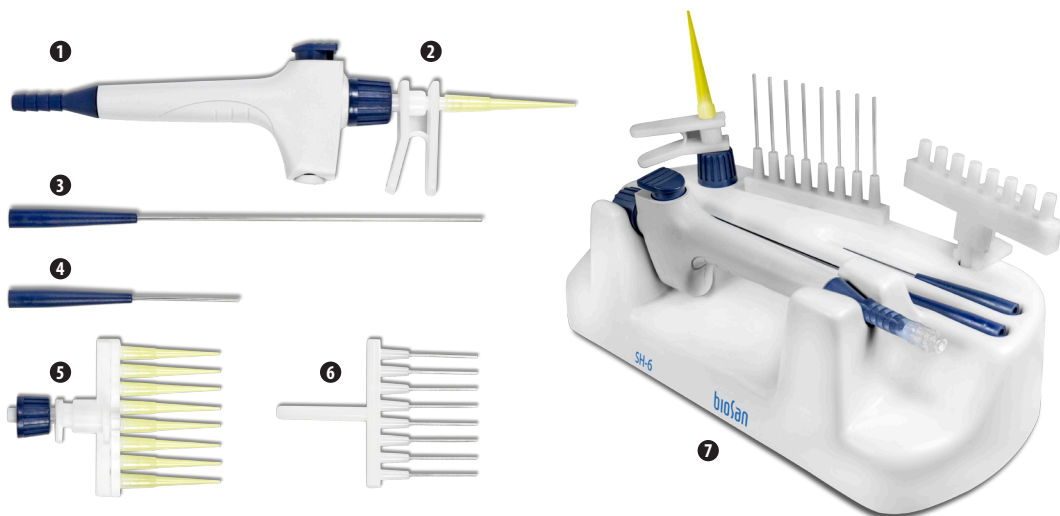
Tube holder-organizer (1.5 & 2 ml)

# FTA-2i, Aspirator with Trap Flask

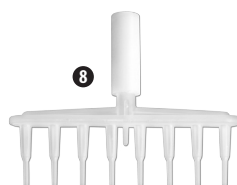
## OPTIONAL ACCESSORIES:

### HAS-1, hand operator set

- ❶ Handheld vacuum controller;
- ❷ 1-channel adapter (with ejector) for 200  $\mu$ L tips;
- ❸ 1-channel adapter with 125 mm stainless steel pin;
- ❹ 1-channel adapter with 40 mm stainless steel pin;
- ❺ 8-channel adapter (with ejector) for 200  $\mu$ L tips;
- ❻ 8-channel adapter with 35 mm stainless steel pin;
- ❼ Stand SH-6



### ❸ MA-8, 8-channel adapter manifold



## ORDER INFORMATION:

**FTA-2i**, with 2l trap flask, universal adapter **MA-U** (for 200/1000  $\mu$ L single use tips)

### Optional accessories:

**HAS-1**, hand operator set

**MA-8**, 8-channel adapter manifold

### Replacement parts:

Suction microbiologic hydrophobic filter

**MA-U**, universal adapter for 200/1000  $\mu$ L single use tips

Cat. number

BS-040120-A02

BS-040118-PK

BS-040108-BK

BS-040120-S10

BS-040118-AK

