

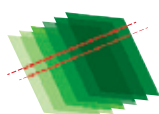
# *EXTRACTME*

## Product Series

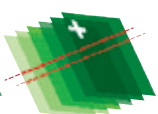


# DNA & RNA EXTRACTION KITS

Fast and efficient isolation of nucleic acids  
from a wide range of biological materials



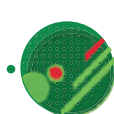
DNA TISSUE



DNA TISSUE PLUS



DNA BLOOD



DNA SWAB  
& SEMEN



DNA BACTERIA



PLASMID DNA



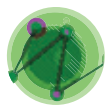
DNA YEAST



DNA GEL-OUT



DNA CLEAN-UP



TOTAL RNA



TOTAL RNA  
PLUS



# **EXTRACTME**

## Product Series

High-quality nucleic acid extraction kits:

- **Rapid and reliable purification**
- **Excellent results from a wide range of biological materials**
- **Superior yield (very efficient extraction)**
- **High purity (DNA free from trace PCR inhibitors)**
- **Very convenient**

The **EXTRACTME** kits are designed for rapid and efficient isolation of high quality DNA and RNA from various materials and purification of DNA fragments. The kits utilise a silica-based technique for selective nucleic acid isolation. The optimised reagents also remove impurities and enzyme inhibitors. The purified nucleic acids may be used directly in all downstream applications such as PCR, qPCR, RT-PCR, cloning, DNA sequencing, genotyping, DNA ligation, Southern and Northern blotting, etc.

Each kit contains a set of reagents necessary for DNA/RNA purification, relevant enzymes, spin mini-columns with appropriate silica membranes and comprehensive Product Manual, which contains detailed isolation protocol and additional helpful information.

**EXTRACTME kits main features:**

- Rapid and efficient purification
- High purity nucleic acids for qPCR analysis and DNA sequencing
- Extended enzyme stability
- Covers a wide range of starting material (and still expanding)
- Clear instructions, rich in useful information

Looking for extraction kits as efficient as the most valued commercial kits, but for a reasonable price?

The **EXTRACTME** products are the answer.

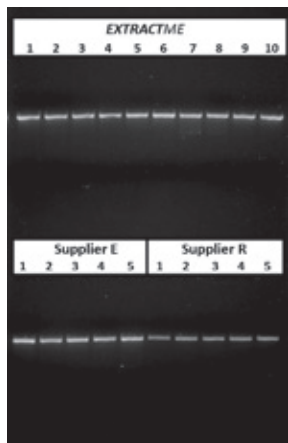
**Applicability Table**

|               |                      | Agarose gel | Bacterial culture | Blood | Cell culture | Enzymatic reaction mixture | Formalin-preserved tissue | Gram-negative bacteria | Gram-positive bacteria | Hair | Insect | Paraffin embedded tissue | Physiological fluids | Plasmid vectors | Rodent tail | Semen | Solid tissue | Swabs - buccal, nasal, pharyngeal and vaginal | Yeast | *Homogenisation Bead-Beating tubes |
|---------------|----------------------|-------------|-------------------|-------|--------------|----------------------------|---------------------------|------------------------|------------------------|------|--------|--------------------------|----------------------|-----------------|-------------|-------|--------------|---|-------|------------------------------------|
| EXTRACTME DNA | PLASMID DNA kit      |             | ✓                 |       |              |                            |                           |                        |                        |      |        |                          |                      | ✓               |             |       |              |   |       |                                    |
|               | DNA BACTERIA kit     |             | ✓                 |       |              |                            |                           | ✓                      | ✓                      |      |        |                          |                      |                 |             |       |              |   |       |                                    |
|               | DNA TISSUE kit       |             |                   |       | ✓            |                            | ✓                         |                        |                        | ✓    | ✓      | ✓                        | ✓                    |                 | ✓           |       | ✓            |   |       |                                    |
|               | DNA TISSUE PLUS kit  |             |                   |       | ✓            |                            | ✓                         |                        |                        | ✓    | ✓      | ✓                        | ✓                    |                 | ✓           |       | ✓            |   |       | ✓                                  |
|               | DNA BLOOD kit        |             |                   | ✓     |              |                            |                           |                        |                        |      |        |                          |                      |                 |             |       |              |   |       |                                    |
|               | DNA SWAB & SEMEN kit |             |                   |       |              |                            |                           |                        |                        |      |        |                          |                      |                 |             | ✓     |              | ✓   |       |                                    |
|               | DNA CLEAN-UP kit     |             |                   |       |              | ✓                          |                           |                        |                        |      |        |                          |                      |                 |             |       |              |   |       |                                    |
|               | DNA GEL-OUT kit      | ✓           |                   |       |              |                            |                           |                        |                        |      |        |                          |                      |                 |             |       |              |   |       |                                    |
|               | DNA YEAST kit        |             |                   |       |              |                            |                           |                        |                        |      |        |                          |                      |                 |             |       |              |   | ✓     |                                    |
| EXTRACTME RNA | TOTAL RNA kit        |             |                   |       | ✓            |                            |                           |                        |                        | ✓    |        |                          | ✓                    |                 |             |       | ✓            |   |       |                                    |
|               | TOTAL RNA PLUS kit   |             |                   |       | ✓            |                            |                           |                        |                        | ✓    |        |                          | ✓                    |                 |             |       | ✓            |   |       | ✓                                  |

## High isolation efficiency and DNA purity

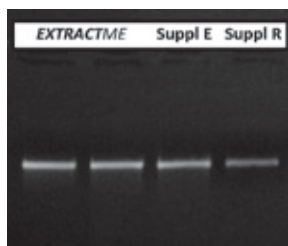
The **EXTRACTME** kit series is designed for high efficiency isolation at no expense to high nucleic acid purity. All the kit elements including conditions and optimised buffer formulations have been minutely chosen for the optimal results. Efficiencies and DNA purities obtained with the

**EXTRACTME** kits are comparable or better than the ones obtained with the currently commercially available kits for nucleic acid isolation. Result comparisons are shown in Fig. 1, Fig.2 and Table 1.



**Fig. 1**  
**Purification of the**  
**PCR products.**

Homogeneous reaction mixture with the 500 bp product was divided into aliquots. Identical samples subjected to purification using **EXTRACTME DNA CLEAN-UP** kit and the analogous kit from other suppliers.



**Fig. 2**  
**Purification from**  
**agarose gel.**

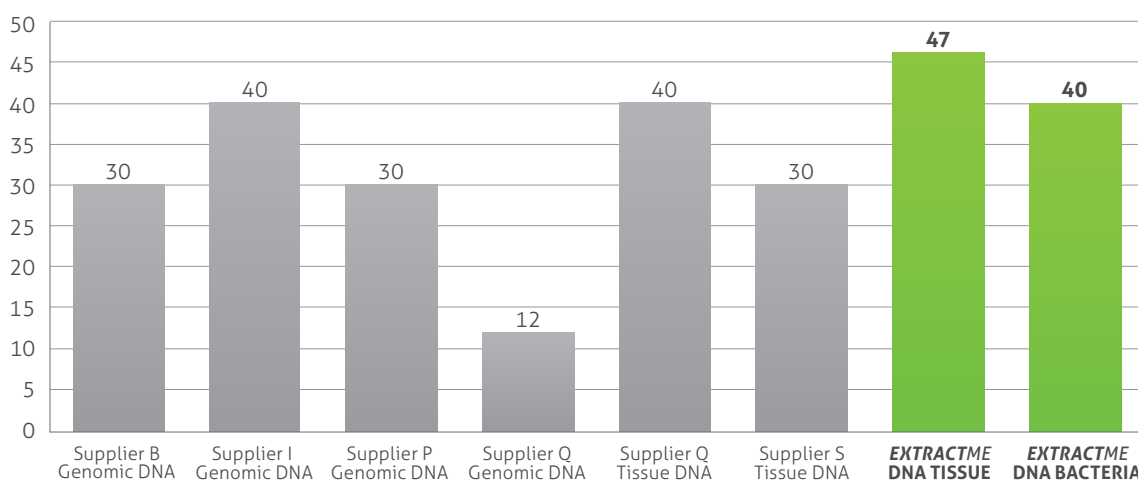
Homogeneous reaction mixture with the 500 bp product was applied to the agarose gel, 10 µl per well, and identical gel blocks were cut-out. The samples were subjected to purification using **EXTRACTME DNA GEL-OUT** kit and the analogous kit from other suppliers.

|                          | Yield<br>[ng/µl] | A <sub>260/280</sub> | A <sub>260/230</sub> |
|--------------------------|------------------|----------------------|----------------------|
| <b>PLASMID DNA</b>       |                  |                      |                      |
| <b>EXTRACTME</b>         | <b>45</b>        | <b>1,8</b>           | <b>2,1</b>           |
| Supplier A               | 44               | 1,9                  | <b>1,7</b>           |
| Supplier I               | 41               | 1,9                  | 2,4                  |
| Supplier B               | 36               | <b>2</b>             | 2,2                  |
| <b>DNA FROM BACTERIA</b> |                  |                      |                      |
| <b>EXTRACTME</b>         | <b>109</b>       | <b>1,9</b>           | <b>2</b>             |
| Supplier E               | <b>62</b>        | 1,8                  | <b>1,3</b>           |
| <b>DNA FROM BLOOD</b>    |                  |                      |                      |
| <b>EXTRACTME</b>         | <b>16,2</b>      | <b>1,9</b>           | <b>1,9</b>           |
| Supplier A               | <b>13</b>        | 1,9                  | 2,8                  |
| Supplier E               | 23               | 1,8                  | <b>0,9</b>           |
| <b>DNA CLEAN-UP</b>      |                  |                      |                      |
| <b>EXTRACTME</b>         | <b>33</b>        | <b>1,9</b>           | <b>2,9</b>           |
| Supplier R               | <b>15</b>        | <b>1,7</b>           | <b>0,3</b>           |
| Supplier E               | 32               | 1,9                  | <b>1,7</b>           |
| <b>DNA FROM YEAST</b>    |                  |                      |                      |
| <b>EXTRACTME</b>         | <b>29</b>        | <b>1,9</b>           | <b>2</b>             |
| Supplier E               | 33               | <b>2</b>             | 2,1                  |

**Table 1 Exemplary yield and purity result comparisons.**

The results have been divided into product groups. Presented figures were obtained in the same purification experiment from the same batch and volume of sample material.

**Fig. 3 Yield comparison (µg)**





## Versatility

The kits are designed to cover a wide range of various starting materials.

The **EXTRACTME DNA TISSUE** kit Manual contains 10 isolation protocols for different kinds of tissues and cell cultures.

The **EXTRACTME DNA BLOOD** kit can be employed for isolation from human as well as animal blood.

The **EXTRACTME DNA SWAB&SEMEN** protocol can be followed when extracting from various swabs and semen.

The **EXTRACTME DNA CLEAN-UP** and **GEL-OUT** kit can be used not only for purification of the wide length range of DNA fragments, but additionally to plasmid and genomic DNA.

## Enzymes

Enzymes in the kits are provided in a dried form for higher stability during shipment and prolonged storage. In larger kit sizes, enzyme lyophilisates have been divided into several tubes to preserve their activity as long as possible.

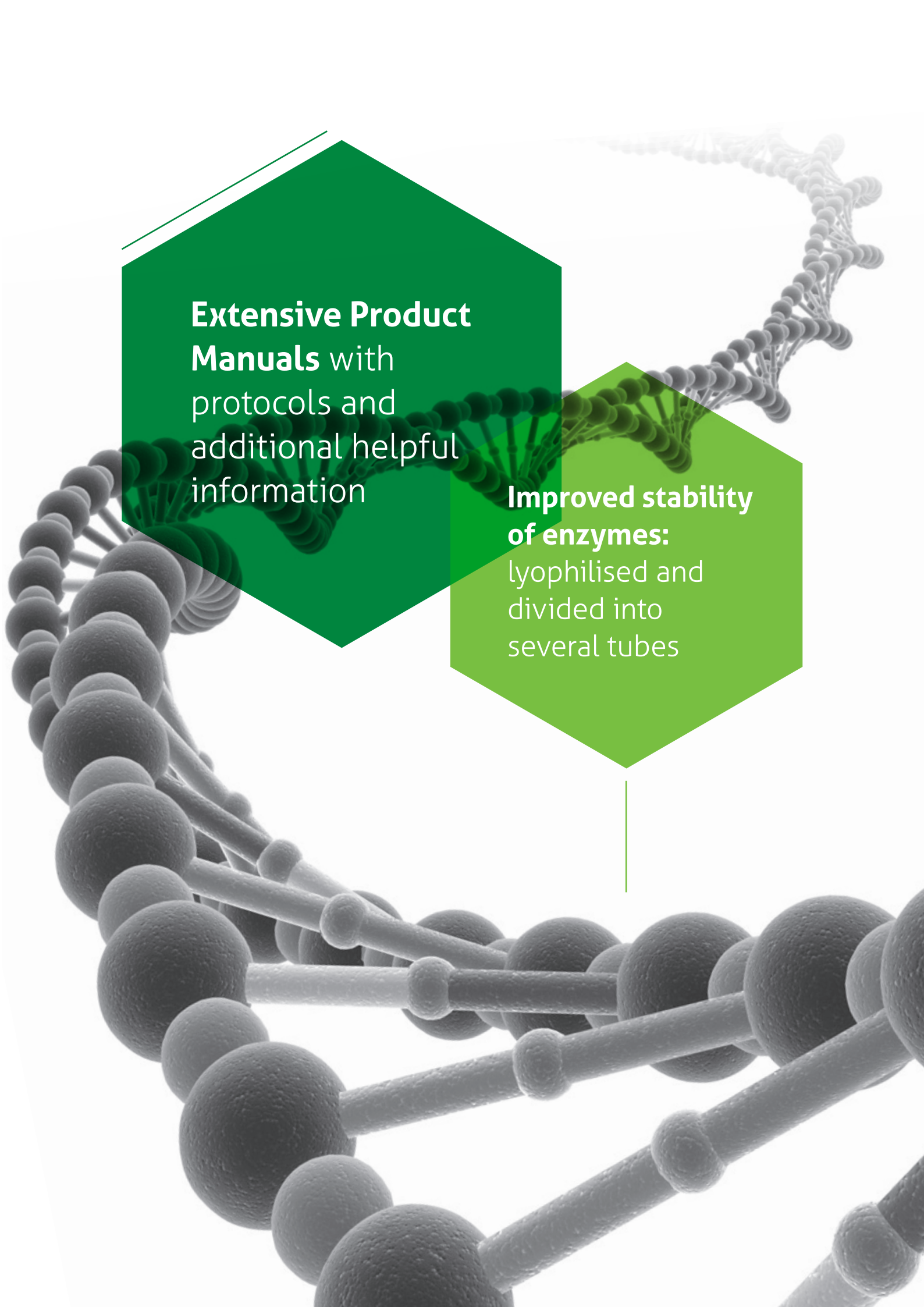
## Extensive Product Manual

In addition to clear and comprehensive isolation protocols, our Product Manual contains specifications, sample preparation guides and helpful tips on how to maximise isolation yields. An extremely important advantage of the Manuals is an expanded troubleshooting section, which addresses most of the possible difficulties a person may encounter during the extraction process and relevant solutions.

| PRODUCT  | SIZE           | CAT. NO. |
|--|----------------|----------|
| DNA Isolation                                  |                |          |
| <b>EXTRACTME PLASMID DNA KIT</b>               | 50 isolations  | EM01-050 |
|  | 150 isolations | EM01-150 |
|  | 250 isolations | EM01-250 |
| <b>EXTRACTME DNA BACTERIA KIT</b>              | 50 isolations  | EM02-050 |
|  | 150 isolations | EM02-150 |
|  | 250 isolations | EM02-250 |
| <b>EXTRACTME DNA TISSUE KIT</b>                | 50 isolations  | EM03-050 |
|  | 150 isolations | EM03-150 |
|  | 250 isolations | EM03-250 |
| <b>EXTRACTME DNA BLOOD KIT</b>                 | 50 isolations  | EM05-050 |
|  | 150 isolations | EM05-150 |
|  | 250 isolations | EM05-250 |
| <b>EXTRACTME DNA SWAB &amp; SEMEN KIT</b>      | 25 isolations  | EM06-025 |
|  | 100 isolations | EM06-100 |
|  | 250 isolations | EM06-250 |
| <b>EXTRACTME DNA CLEAN-UP KIT</b>              | 50 isolations  | EM07-050 |
|  | 150 isolations | EM07-150 |
|  | 250 isolations | EM07-250 |
| <b>EXTRACTME DNA GEL-OUT KIT</b>               | 50 isolations  | EM08-050 |
|  | 150 isolations | EM08-150 |
|  | 250 isolations | EM08-250 |
| <b>EXTRACTME DNA YEAST KIT</b>                 | 50 isolations  | EM10-050 |
|  | 150 isolations | EM10-150 |
|  | 250 isolations | EM10-250 |
| RNA Isolation                                  |                |          |
| <b>EXTRACTME TOTAL RNA KIT</b>                 | 25 isolations  | EM09-025 |
|  | 100 isolations | EM09-100 |
|  | 250 isolations | EM09-250 |
| Bead-Beating Tubes                             |                |          |
| <b>EXTRACTME DNA TISSUE PLUS KIT*</b>          | 50 isolations  | EM04-050 |
|  | 150 isolations | EM04-150 |
|  | 250 isolations | EM04-250 |
| <b>EXTRACTME TOTAL RNA PLUS KIT*</b>           | 25 isolations  | EM11-025 |
|  | 100 isolations | EM11-100 |
|  | 250 isolations | EM11-250 |
| <b>Bead-Beating Tubes with ceramic filling</b> | 100 pieces     | HPLM100  |
|  | 500 pieces     | HPLM500  |

\* The PLUS kits additionally include tubes for homogenisation with ceramic filling.

**Each kit can also be provided as a DEMO version upon request.**



**Extensive Product Manuals** with protocols and additional helpful information

**Improved stability of enzymes:**  
lyophilised and divided into several tubes



**Blirt S.A., DNA-Gdańsk**

Trzy Lipy 3/1.38, 80-172 Gdańsk, Poland  
[www.dnagdansk.com](http://www.dnagdansk.com) | [info@dnagdansk.com](mailto:info@dnagdansk.com)  
T: +48 58 739 61 50 | F: +48 58 739 61 51