

Transferpette® S



Genuine one-hand operation -
set and lock volume, pipet, eject

Distinct precision and
effortless operation

Volume-change protection
for safe pipetting



BRAND. For lab. For life.



Transferpette® S single and multichannel pipette

Precise and easy to use – the Transferpette® S microliter pipettes provide all features required for pipetting in Life Science applications! By using innovative materials, the Transferpette® S pipette has become a perfect manual pipette for demanding laboratory applications.

- Effortless one-handed operation – set and locking the volume, pipetting, ejecting – all without shifting hand position!
- Clearly visible volume display – 4 digits for precise setting. Always visible, even while pipetting.
- Completely autoclavable at 121 °C (20 min) without disassembly.
- Calibration adjustment with the Easy Calibration technique.

Transferpette® S – the result of intensive ergonomic and operational studies

The genuine one-handed operation including volume adjustment for right and left-handers, as well as the reduced weight ensure easy and efficient pipetting in every volume range.

The short 12.5 mm stroke reduces the risk of RSI (Repetitive Strain Injury). This makes the Transferpette® S a very pleasant, reliable pipette with respect to its features!

The particular advantage of the multichannel pipette is easy operation, e.g., when performing serial pipetting of immunological assays, while making serial dilutions, or when filling 96-well plates for cell cultures. The perfect complement to the Transferpette® S single-channel pipette!



More features

- Large, central pipetting button and separate ejection function
- Volume-change protection
- Corrosion-resistant pistons and ejector
- Color-coded volume range
- Transferpette® S 0.1 - 1 µl – highest precision for small volumes in molecular biology, especially for pipetting enzymes.
- 3-year warranty for single-channel pipettes
- UV resistant
- CE-**IVD**-compliant

Transferpette® S

Volume range:

The Transferpette® S pipette provides maximum versatility and optimum quality over the entire volume range.

There are 10 adjustable-volume single-channel pipettes and 9 fixed-volume single-channel pipettes available in the 0.1 µl to 10 ml range.

Transferpette® S-8



There are 5 sizes of multichannel pipettes available in the 0.5 to 300 µl volume range.

A perfect team with pipette tips by BRAND

BRAND pipette tips and filter tips fit perfectly on the Transferpette® S and many other pipettes.

The tips are manufactured from high-quality materials in a state-of-the-art cleanroom in Germany. Thus, all racked tips and

filter tips up to 1000 µl are free of DNA (<40 fg), RNase (<8.6 fg), endotoxins (<1 pg), and ATP (<1 fg), and ensure contamination-free work.

BRAND offers a full tip system for any application requirement.



At a glance ...



Genuine one-hand operation



Label on the finger rest for individual marking



Changes from factory calibration settings are externally visible by recalibration flag



Centrally located!
Large pipetting button allows uniform, smooth movement of the piston.

Secure!
A brake helps protect against accidental volume changes.

Clearly accurate!
4-digit volume display for precise volumes. Always remains visible during pipetting.

Color-coded!
Color indicates volume range

Slim!
If the tip fits in the vessel, so does the shaft – no retrofitting necessary!

Maximum compatibility!
The tip cone design offers excellent fit with pipette tips from BRAND and broadest compatibility with tips from most other manufacturers.





Fast!

One-handed volume setting for both right- and left-handed users – even with gloves!

Effortless!

Ergonomically arranged tip ejection button with color code according to volume range.

Maximum protection!

Completely autoclavable at 121 °C (20 min) without disassembly – for maximum protection from contamination!

Low strain!

Special O-rings made of silicone / FKM and the stepped design of the tip ejector reduce attachment and ejection forces.



Individual shafts and seals of the multichannel pipette Transferpette® S-8/-12 can be easily unscrewed (patented) and easily cleaned or replaced. Saves cost and downtime!

Technical Data

Items supplied:

Transferpette® S, adjustable volume, DE-M marking, performance certificate, shelf/rack mount and silicone grease.



Transferpette® S, adjustable volume

Capacity, µl (color-coded)		Description	A* ≤ ± % µl		CV* ≤ % µl		Subdivision µl	Cat. No.
●	0.1 - 1	D-1 ①	2	0.02	1.2	0.012	0.001	7047 68
●	0.1 - 2.5	D-2,5 ②	1.4	0.035	0.7	0.018	0.002	7047 69
●	0.5 - 10	D-10	1	0.1	0.5	0.05	0.01	7047 70
●	2 - 20	D-20	0.8	0.16	0.4	0.08	0.02	7047 72
●	5 - 50	D-50	0.8	0.4	0.3	0.15	0.05	7047 73
●	10 - 100	D-100	0.6	0.6	0.2	0.2	0.1	7047 74
●	20 - 200	D-200	0.6	1.2	0.2	0.4	0.2	7047 78
●	100 - 1000	D-1000	0.6	6	0.2	2	1	7047 80
●	500 - 5000	D-5000 ③	0.6	30	0.2	10	5	7047 82
●	1000 - 10000	D-10000 ④	0.6	60	0.2	20	10	7047 84



Transferpette® S, fixed volume

Capacity, µl (color-coded)		Description	A* ≤ ± % µl		CV* ≤ % µl		Cat. No.
●	10	F-10	1	0.1	0.5	0.05	7047 08
●	20	F-20**	0.8	0.16	0.4	0.08	7047 16
●	25	F-25	0.8	0.2	0.4	0.1	7047 20
●	50	F-50	0.8	0.4	0.4	0.2	7047 28
●	100	F-100	0.6	0.6	0.2	0.2	7047 38
●	200	F-200**	0.6	1.2	0.2	0.4	7047 44
●	500	F-500	0.6	3	0.2	1	7047 54
●	1000	F-1000	0.6	6	0.2	2	7047 62
●	2000	F-2000	0.8	16	0.3	6	7047 64

* Calibrated to deliver (TD, Ex). Error limits according to the nominal capacity (= maximum volume) indicated on the instrument, obtained with instrument and distilled water at equilibrium with ambient temperature at 20 °C, and with smooth operation.
A = Accuracy, CV = Coefficient of variation

** For use only with 2-200 µl pipette tips

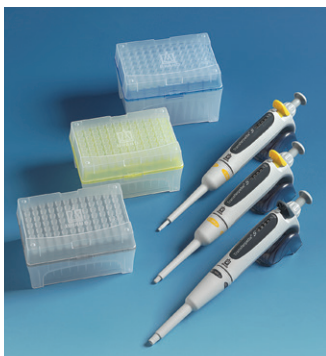
Note:

① D-1 for use only with nano-cap™ tip from BRAND.

② D-2.5: when using BRAND nano-cap™ tips or tips from other manufacturers, calibration and possibly adjustment is necessary.

③ D-5000 for use only with 5 ml tip from BRAND and 5 ml tip from Thermo Fisher Scientific Inc. (Finnpipette®).

④ D-10000 for use with 10 ml tip from BRAND and appropriate tips from Gilson® and Eppendorf®.



Pipette-Sets, Transferpette® S, adjustable volume

Type	Description	Cat. No.
MICRO	3 Pipettes (D-2,5, D-10, D-100), 3 TipBox, 3 shelf/rack mounts	7047 90
MIDI	3 Pipettes (D-20, D-200, D-1000), 3 TipBox, 3 shelf/rack mounts	7047 91
MACRO	3 Pipettes (D-1000, D-5000, D-10000), 3 TipBox, 3 shelf/rack mounts	7047 92
STANDARD	3 Pipettes (D-10, D-100, D-1000), 3 TipBox, 3 shelf/rack mounts	7047 93
Pipette package 1	5 Pipettes (D-2,5, D-10, D-100, D-200, D-1000), 3 TipBox, bench-top rack	7048 50
Pipette package 2	5 Pipettes (D-10, D-100, D-200, D-1000, D-5000), 4 TipBox, bench-top rack	7048 51

Technical Data

Items supplied:

Transferpette® S-8/-12, DE-M marking, with performance certificate, 2 x TipBox, filled with pipette tips from BRAND, 1 shelf/rack mount, 1 reagent reservoir, 1 mounting tool, silicone grease and 1 set of sealing rings made of silicone/FKM.



Transferpette® S-8

Capacity, µl (color-coded)	Description	A* ≤ ± %	CV* ≤ %	Subdivision µl	Cat. No.
0.5 - 10	M8-10	1.6	1.0	0.01	7037 00
5 - 50	M8-50	0.8	0.4	0.05	7037 06
10 - 100	M8-100	0.8	0.3	0.1	7037 08
20 - 200	M8-200	0.8	0.3	0.2	7037 10
30 - 300	M8-300	0.6	0.3	0.5	7037 12



Transferpette® S-12

Capacity, µl (color-coded)	Description	A* ≤ ± %	CV* ≤ %	Subdivision µl	Cat. No.
0.5 - 10	M12-10	1.6	1.0	0.01	7037 20
5 - 50	M12-50	0.8	0.4	0.05	7037 26
10 - 100	M12-100	0.8	0.3	0.1	7037 28
20 - 200	M12-200	0.8	0.3	0.2	7037 30
30 - 300	M12-300	0.6	0.3	0.5	7037 32

* Calibrated to deliver (TD, Ex). Error limits according to the nominal capacity (= maximum volume) indicated on the instrument, obtained with instrument and distilled water at equilibrium with ambient temperature at 20 °C, and with smooth operation.
A = Accuracy, CV = Coefficient of variation

Note! When ordering instruments with DAkKS calibration certificates, the prefix 'DAkKS' must be added to the order number, e.g., DAkKS 7047 28.

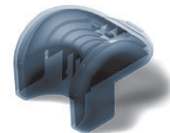
Accessories



Bench-top rack

For 6 Transferpette® S or Transferpette® S-8/-12 pipettes. Pack of 1.

Cat. No. 7048 05



Shelf/rack mount

For 1 Transferpette® S single or multichannel pipette. Pack of 1.

Cat. No. 7048 10



Individual stand

For 1 Transferpette® S pipette. Pack of 1.

Bis 1000 µl

Cat. No. 7053 85

500-5000 µl

Cat. No. 7053 86



Filter

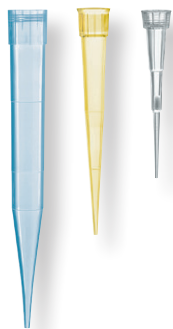
Pack of 25.

Description	Cat. No.
D-5000	7046 52
D-10000	7046 53

For 1 Transferpette® S-8/-12 pipette. Pack of 1.

Cat. No. 7034 40

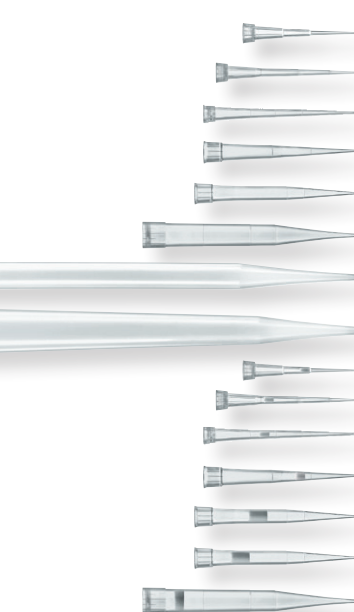
The right pipette tip for your Transferpette *S*



Optimal performance will be achieved with the use of genuine premium tips from BRAND. BRAND quality tips seat perfectly for precise analyses.

IVD

CE



Pipette tips Filter tips Volume range	Transferpette® S single-channel Nominal volume													Transferpette® S multichannel Nominal volume				
	1 µl	2.5 µl	10 µl	20 µl	25 µl	50 µl	100 µl	200 µl	500 µl	1000 µl	2 ml	5 ml	10 ml	10 µl	50 µl	100 µl	200 µl	300 µl
	●	●	●	●	●	●	●	●	●	●	●	●	●	●	●	●	●	●
0.1 - 20 µl	✓	✓ ₂₎	✓ ₂₎											✓				
0.5 - 20 µl		✓	✓											✓				
1 - 50 µl		✓ ₂₎	✓											✓				
2 - 200 µl ¹⁾				✓	✓	✓	✓	✓							✓	✓	✓	✓
5 - 300 µl				✓	✓	✓	✓	✓							✓	✓	✓	✓
50 - 1000 µl ¹⁾									✓	✓								
0.5 - 5 ml											✓	✓						
1 - 10 ml													✓					
0,1 - 1 µl	✓	✓ ₂₎	✓ ₂₎											✓				
0.5 - 10 µl		✓	✓											✓				
1 - 20 µl			✓											✓				
2 - 20 µl				✓	✓	✓	✓	✓							✓	✓	✓	
5 - 100 µl				✓	✓	✓	✓	✓							✓	✓	✓	✓
5 - 200 µl								✓							✓	✓	✓	✓
50 - 1000 µl									✓	✓								

✓ = Tip volume less than pipette's nominal volume

¹⁾ Bulk tips are yellow or blue colored, rackable tips are colorless in a yellow-colored or blue-colored tip tray

²⁾ Calibration and possibly adjustment is necessary.

For more information about the Transferpette® S go to shop.brand.de!

BRAND®, Transferpette® and the BRAND word and figurative mark are registered trademarks of BRAND GMBH + CO KG, Germany. Other reproduced brands are the property of the respective owner.

Our technical literature is intended to inform and advise our customers. However, the validity of general empirical values, and of results obtained under test conditions, for specific applications depends on many factors beyond our control. Please appreciate, therefore, that no claims can be derived from our advice. The user is responsible for checking the appropriateness of the product for any particular application.

California Residents: For more information concerning California Proposition 65, please refer to www.brand.de/calprop65

Subject to changes in design and equipment; errors and omissions excepted.

BRAND GMBH + CO KG · P.O. Box 1155 · 97861 Wertheim · Germany

Tel.: +49 9342 808-0 · Fax: +49 9342 808-98000 · E-Mail: info@brand.de · Internet: www.brand.de

