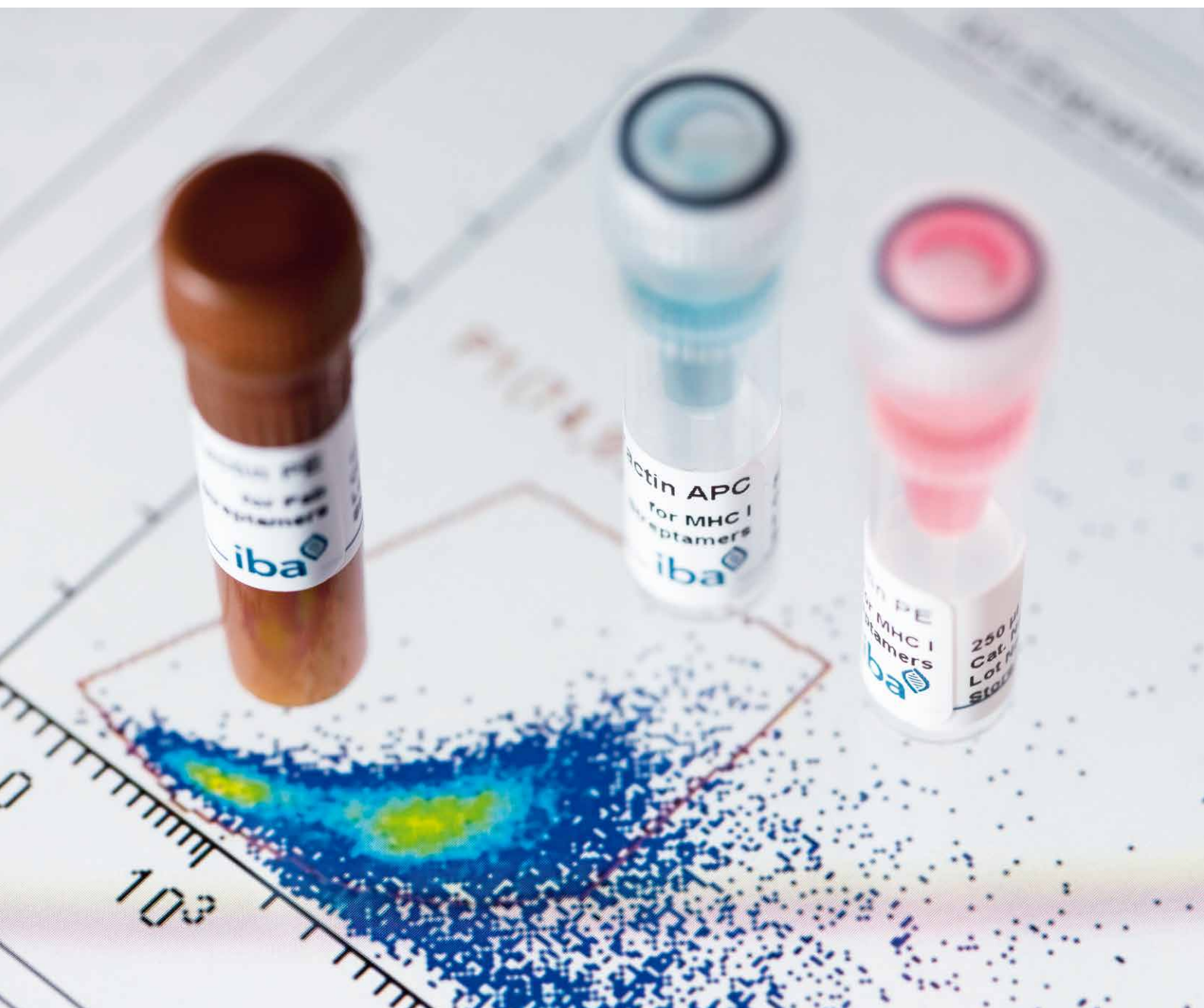
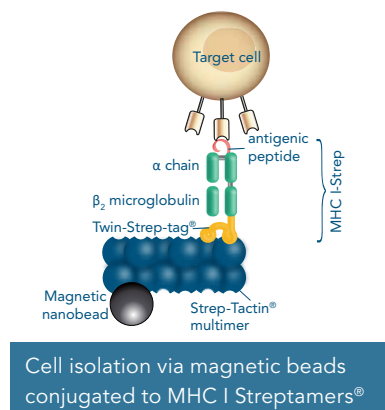
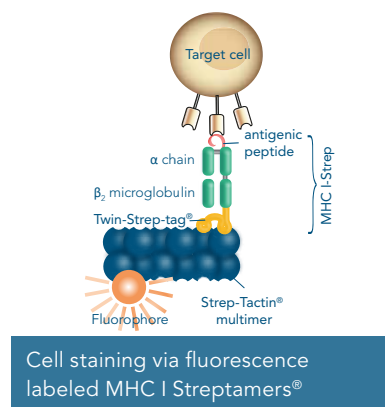


MHC I STREPTAMERS®

Detection and Selection of Antigen-specific CD8⁺ T Cells





DETECTION OF ANTIGEN-SPECIFIC T CELLS WITH MHC I STREPTAMERS®

Antigen-specific CD8⁺ T cells are stained with fluorescent MHC I Streptamers® (complex from fluorescence-labeled Strep-Tactin® and multimerized low-affinity MHC I-Streps) and are ready for e.g. flow cytometry. The subsequent removal of label with biotin preserves the authentic properties of the cells and allows unbiased down-stream applications with functional, label-free cells.

MHC I Streptamers® technology

MHC I Streptamers® comprise two components:

- MHC I-Strep, which is an MHC I molecule fused with Twin-Strep-tag® and a specific antigenic peptide
- Strep-Tactin® multimers labeled with a fluorophore (PE or APC) or bound to magnetic nanobeads

Key benefits

- Accurate labeling and great staining intensities due to multivalent binding
- Modular products for FACS analysis and magnetic cell isolation
- Reversible reagents maintain the full functionality of selected cells

MHC I STREPTAMERS® BEST SELLERS

Research field	Allele	Antigen	Sequence	Cat. No.
Cytomegalovirus	HLA-A*0201	CMV pp65	NLVPMVATV	6-7001-001
	HLA-B*0702	CMV pp65	TPRVTGGGAM	6-7027-001
	HLA-A*2402	CMV pp65	QYDPVAALF	6-7028-001
	HLA-A*1101	CMV pp65	GPISGHVLK	6-7050-001
	HLA-A*0101	CMV pp50	VTEHDTLLY	6-7024-001
	HLA-B*0801	CMV IE-1	QIKVRVDMV	6-7017-001
	HLA-A*0201	CMV IE-1	VLEETSVML	6-7041-001
Tumor	HLA-A*0201	WT-1 (Wilms tumor protein)	RMFPNAPYL	6-7019-001
	HLA-A*0201	HA-1H	VLHDDLLEA	6-7018-001
	HLA-A*0201	MART 1	VLQELNVTV	6-7007-001
	HLA-A*0201	NY-ESO-1 (cancer testis antigen)	SLLMWITQV	6-7013-001

Peptides of interest not listed above?

Visit our webpage: <https://www.iba-lifesciences.com/antigen-specific-t-cell-staining-product-shop.html>

Contact us: info@streptamer.com

www.iba-lifesciences.com