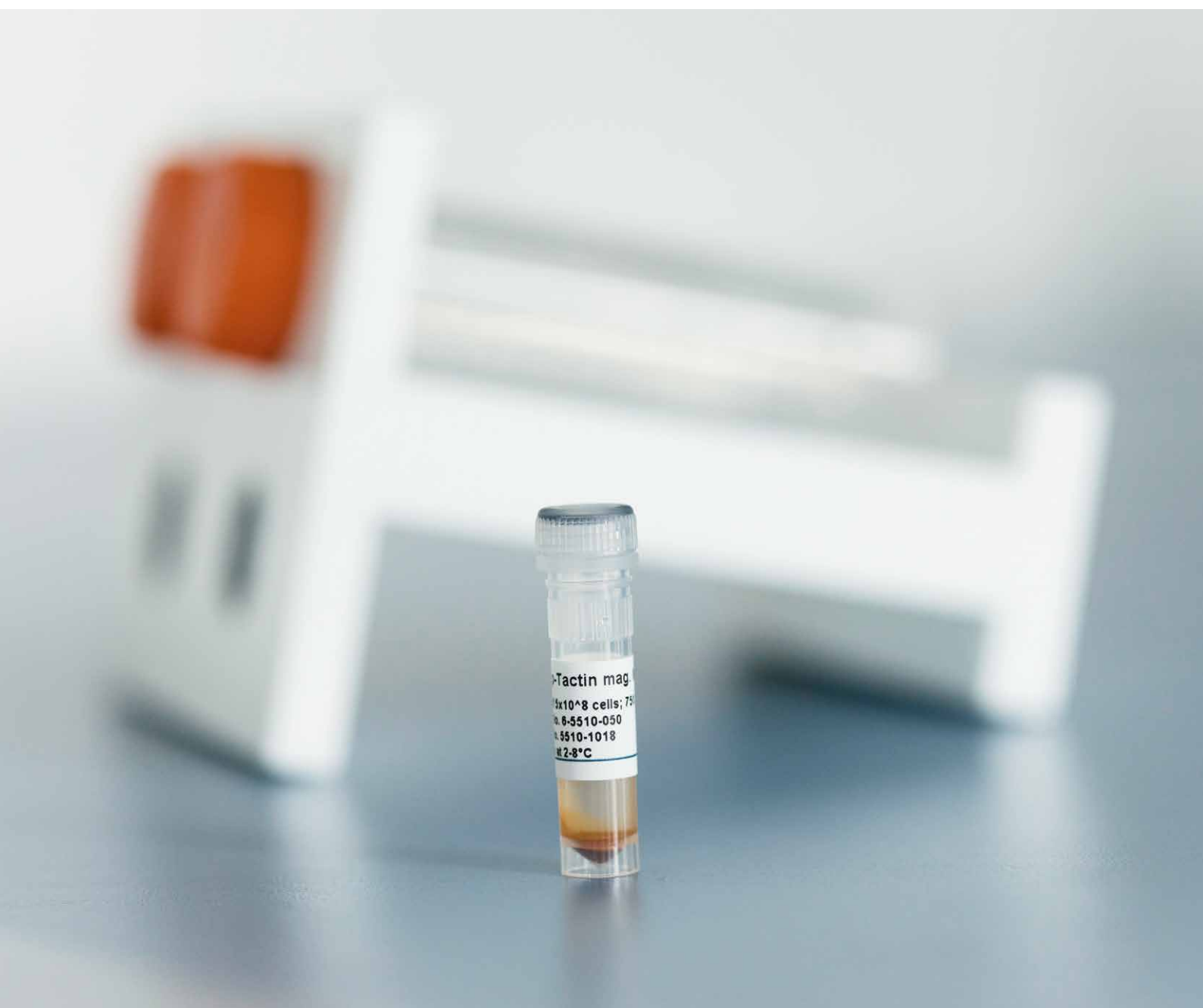
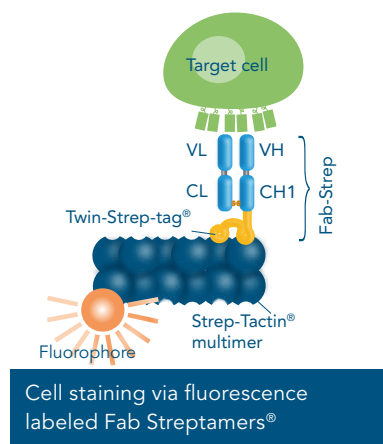
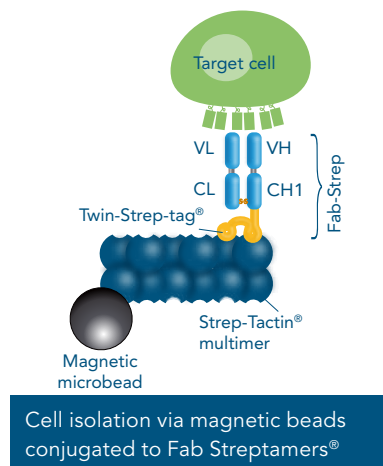


# FAB STREPTAMERS®

Receptor-specific Cell Selection and Staining





## MAGNETIC T CELL ISOLATION WITH FAB STREPTAMERS®

### Receptor-specific cell selection or staining

Fab Streptamer® reagents are used for receptor-specific cell isolation from PBMC and subsequent cell staining of any cells carrying a surface marker such as CD3, CD4 etc.

### Fab Streptamer® technology

Fab-Streptamers® comprise two components:

- Low affinity Fab, which is fused to Twin-Strep-tag® (Fab-Strep)
- Strep-Tactin® multimers labelled with a magnetic microbead or fluorophore (PE or APC)

The Fab fragment confers the specificity to a certain CD marker receptor. The Twin-Strep-tag® can bind to Strep-Tactin®, which is then used for isolation or staining of the target cell. For cell isolation the StrepMan magnet (cat.no 6-5650-065) is required. Upon addition of biotin, a competitive Strep-tag® ligand, the Strep-Tactin® multimer will dissociate from the complex and also the Fab fragment will detach from the target cell.

### Key benefits

- Fully functional target cells
- Complete dissociation of isolation reagents from purified cells
- Serial positive selections of different markers allow isolation of even rare cell subsets
- High purity and recovery of the target cells

## FAB STREPTAMER® PRODUCT OVERVIEW

Cell of Interest	Fab Streptamer® Isolation Kit	Cat. No.
T cells	CD3 <sup>+</sup>	6-8000-201
Helper T cells	CD4 <sup>+</sup>	6-8000-206
Cytotoxic T cells	CD8 <sup>+</sup>	6-8000-203
Naive T cells	CD4 <sup>+</sup> CD45RA <sup>+</sup>	6-8000-221
	CD8 <sup>+</sup> CD62L <sup>+</sup> CD45RA <sup>+</sup>	6-8000-219
Memory T cells	CD3 <sup>+</sup> CD45RO <sup>+</sup>	6-8000-217
	CD3 <sup>+</sup> CD62L <sup>+</sup> CD45RA	6-8000-216
	CD3 <sup>+</sup> CD62L <sup>+</sup> CD45RO <sup>+</sup>	6-8000-212
Memory CD4 <sup>+</sup> T cells	CD4 <sup>+</sup> CD62L <sup>+</sup> CD45RA <sup>-</sup>	6-8000-215
	CD4 <sup>+</sup> CD62L <sup>+</sup> CD45RO <sup>+</sup>	6-8000-211
Memory CD8 <sup>+</sup> T cells	CD8 <sup>+</sup> CD62L <sup>+</sup> CD45RA <sup>-</sup>	6-8000-213
	CD8 <sup>+</sup> CD62L <sup>+</sup> CD45RO <sup>+</sup>	6-8000-210
Regulatory T cells	CD4 <sup>+</sup> CD25 <sup>+</sup>	6-8000-205
	CD4 <sup>+</sup> CD25 <sup>+</sup> CD45RA <sup>+</sup>	6-8000-214

Note : Kits with each single marker can be purchased individually.

[www.iba-lifesciences.com](http://www.iba-lifesciences.com)