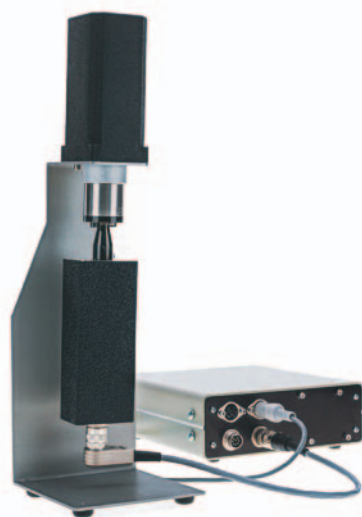


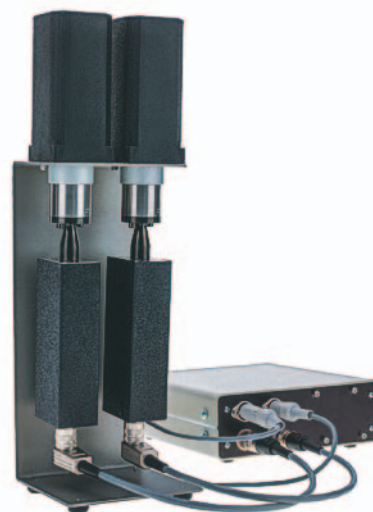
## Nanoflow Pump/Injector



**NP1 and NP2**  
Nanoflow pump/injector



**NP3 and NP4**  
Gradient system/injector



**NP5**  
Pump with continuous flow

### Nanoflow pump

**NP1** External sample injector  
**NP2** Internal sample injector

Pressure: Up to 15,000 psi  
Flow rates: 1 nl to 100  $\mu$ l per minute  
Capacity: Up to 35  $\mu$ L volume  
Weight: 4 pounds\*  
Sample volume as small as 10 nL in NP2.

### Gradient system

**NP3** External sample injector  
**NP4** Internal sample injector

Pressure: Up to 8,000 psi  
Flow rates: 5 nl to 100  $\mu$ l per minute  
Capacity: Two pumps with capacity up to 35  $\mu$ L volume each  
Weight: 5.5 pounds\*

Gradient is determined by ratio of the independent stepper drives.

### Nanoflow pump

**NP5** Continuous flow

Pressure: Up to 15,000 psi  
Flow rates: 1 nl to 50  $\mu$ l per minute  
Weight: 6 pounds\*

\* Weight noted does not include controller.  
Controller weighs 3 pounds.

North America, South America, and Australia/Oceania call:

**VICI Valco Instruments Co. Inc.**  
tel: 800 367-8424  
fax: 713 688-8106  
valco@vici.com

Europe, Asia, and Africa call:

**VICI VICI AG International**  
tel: Int + 41 41 925-6200  
fax: Int + 41 41 925-6201  
info@vici.ch