



Industry Solution Wine & Beverage Labs

In 2015, we entered into a partnership with Göttert Software to develop the latest solution for wine & beverage labs. This highly flexible industry solution benefits from Peter Göttert's years of experience in analysing wine, whilst at the same time the modern technology of iLIMS makes the system totally configurable by the user.



A Suitable Feature Set for Your Laboratory Expansions for Users of GLIMS

- Scales with your project team (5 to 500 employees and collaborators)
- Platform-independent software based on Java
- Certified to ISO 9001 and GMP/FDA et al. is supported
- Direct communication with your clients via Web-Portal
- Extensive customization possibilities allow non informaticians to adapt the user interface
- Flexible rearrangement and aggregation of spreadsheets with drag and drop

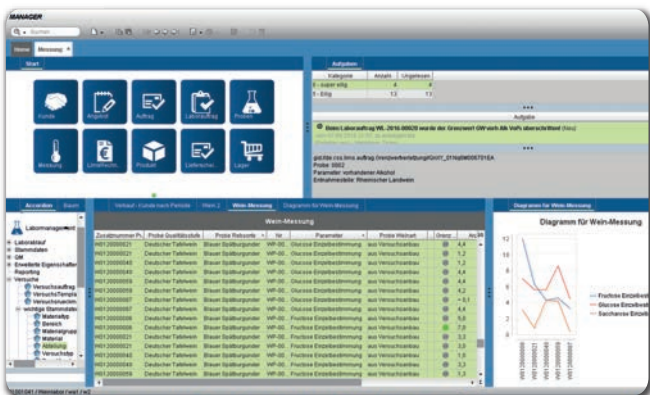


Functions derived from GLIMS

- Recommendations for fining materials are created automatically
- Complete administration of the fining materials (warehouse management, ordering system, delivery notes)
- Freely definable methods, formulas and assays
- Interfaces to measuring devices / GLIMS test site software

Zusätzlicher Nutzen durch iLIMS

- Automation/acceleration of routine operations
- Integrated production of invoices ensures significant time savings
- Reliable documentation and traceability of data create the basis for successful accreditation



Welcome to the Laboratory of the Future

Would you like to learn more about the entire range of functions of our solution for wine & beverage labs?

Our team is looking forward to hearing from you.



iLIMS GmbH
Cottaer Straße 4
01159 Dresden



info@ilims.de
www.ilims.de



100%
Service
Qualität
Zukunft



Tel.: +49 (3 51) 48 45 42 0
Fax: +49 (3 51) 48 45 42 100