



*AUTOMAZIONI  
MACCHINE  
SERVIZI*

**Window and door  
processing machines**

**Handling systems**

**Automation and software**



## Who we are

AMS Automazioni S.p.A., which has come to life thanks to the cooperation of long experienced technicians, has, since 1989, specialized in developing and producing window and door manufacturing equipment and lines, as well as process automation in general.



AMS success is based on enthusiasm, skills and expertise of our people. A technical department (mechanical design), an automation department (electrical, hardware and software engineering) and a production department (manufacturing and assembly) allow AMS to provide complete, flexible and integrated solutions, in order to maximize production efficiency; modularity and customization are our strength points to satisfy specific production requirements of a wide range of customers, from small businesses to big industries.

## How we work

Our technicians' expertise, the integrated approach and the on-going focus on innovation give us the possibility of proposing ourselves to clients as a single interlocutor and partner for a wide range of process automation issues.

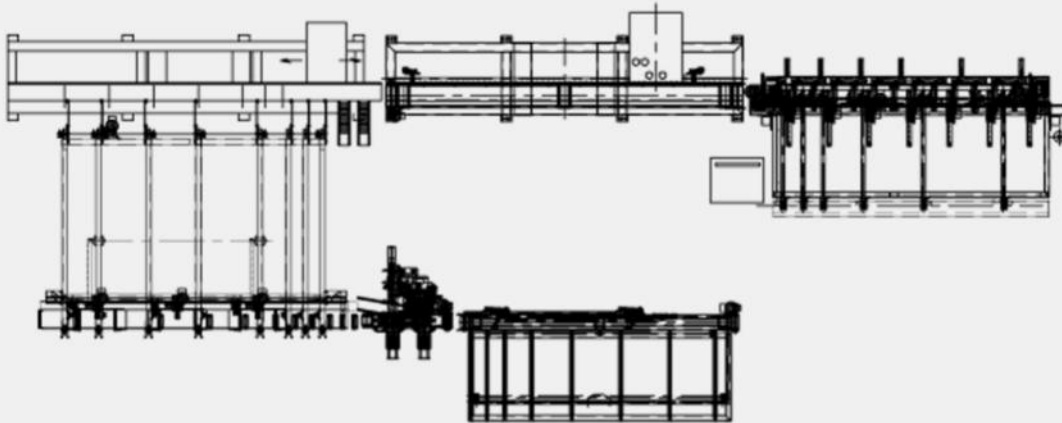
**Our starting point** is a thorough analysis of our customers' needs. As a matter of fact, we work alongside our customers to define the results to be achieved and study *ad hoc* solutions making the most of existing facilities and already made investments, also in view of new production requirements.

**Our goal** is to provide solutions that exceed customers' expectations in terms of technology, productivity and quality, without ever losing sight of the need to guarantee an adequate return on investment.

We want to build a solid and long-lasting trusting relation with customers, ensuring maximum attention and prompt after-sales and support service, also making use of tools like web-based remote-assistance to provide immediate and effective support in case of need.

# Window sash and frame processing lines

AMS has developed integrated lines for window sash and frame elements finishing so as to obtain finished products ready for assembly, starting from profiled and painted elements.



Our machines perform the following operations:

- **boring and routing** for hardware insertion
- **automatic hardware mounting**
- **anuba hinges mounting**
- **gaskets fitting**

Every machine can be supplied individually, inserted in existing lines or supplied in complete and integrated lines; the last solution allows reducing materials handling in the plant to a minimum.



# Window sash and frame assembly

## TITANPRESS

The TITANPRESS range represents AMS solution for assembling window sashes, window frames, louvers and framed doors.

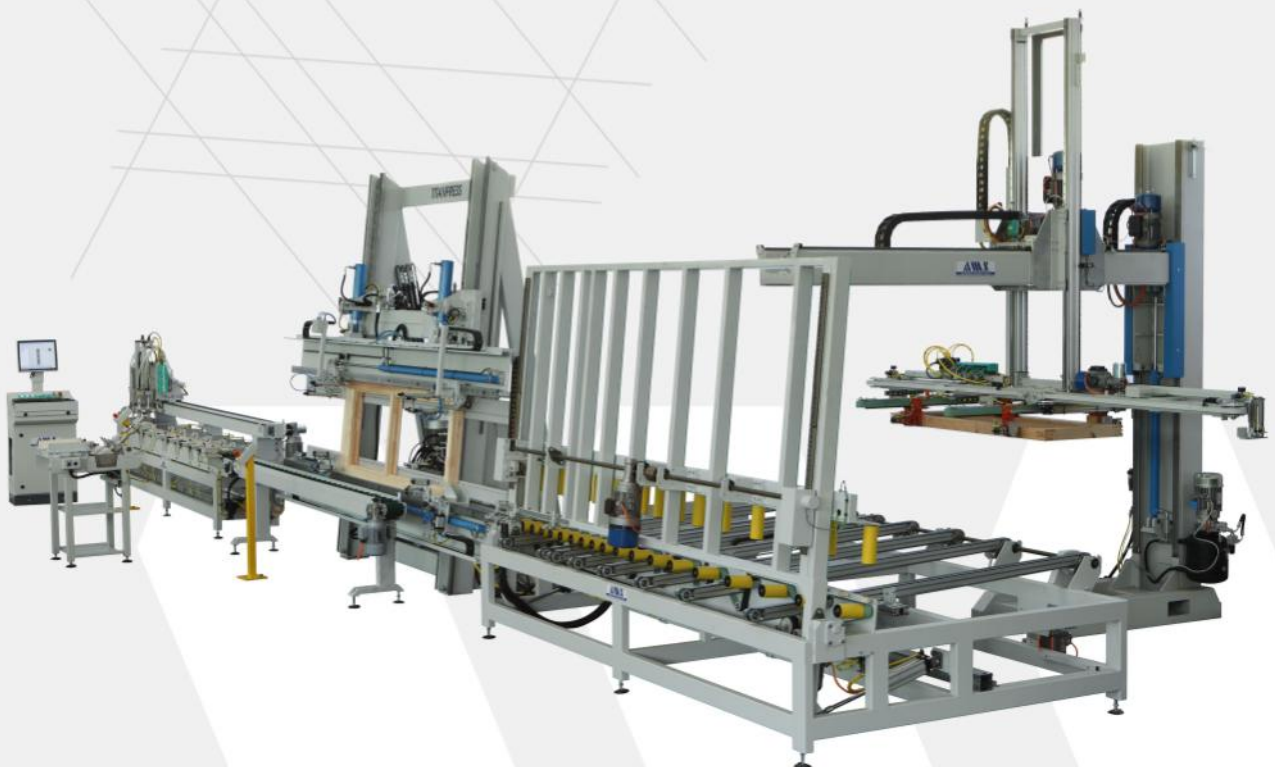
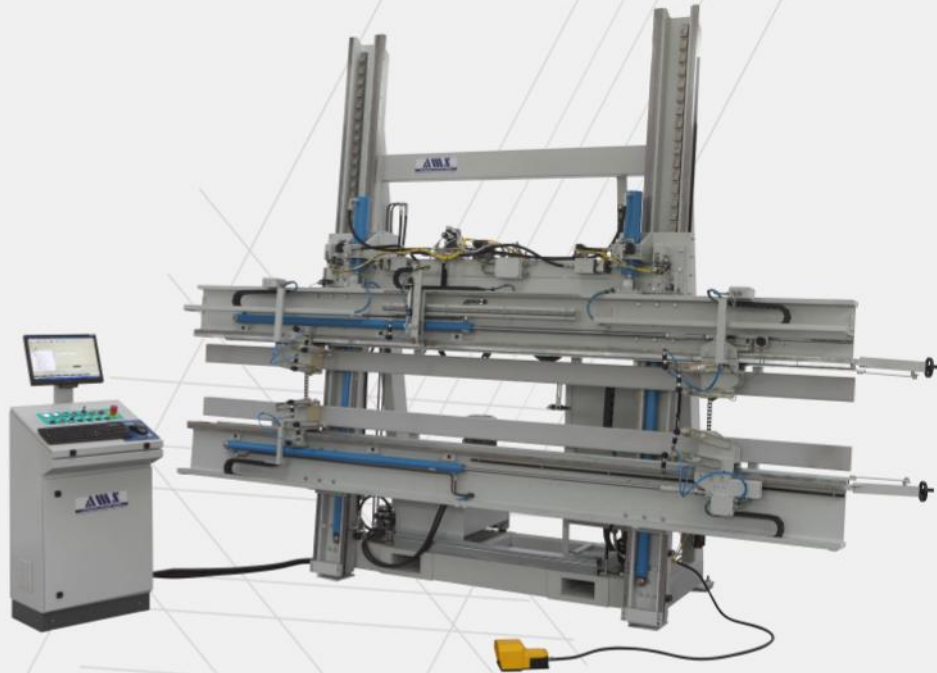
Clamping is CNC controlled in all AMS machines, to ensure maximum accuracy and orthogonality of the assembled product, thus making possible to work with already squared elements.

Robust design and manufacturing accuracy make AMS clamps the ideal solution for those who don't accept compromises in terms of quality of the finished product.

Custom designed and built to meet customers' specific requirements, AMS clamps can be integrated in assembling lines that may include:

- **automatic gluing**
- **automatic screwing or nailing**
- frames and sashes **automatic handling** and **stacking**

AMS assembling lines dramatically reduce time and fatigue connected to material handling and allow the operator to concentrate on quality-sensitive operations, enhancing the overall productivity.



# Window sash and frame finishing

## gasket, hardware, and glass mounting



### SEALSYSTEM-A

AMS offers an automated solution to insert gaskets into **already assembled window sashes**, thereby enabling to obtain high and constant productivity and quality over time, while relieving the operator of much of the physical effort required.

Equipped with a self-learning system, it is suitable for working a wide range of sizes without the need for programming; working alternatively on two separate stations, loading and unloading are carried out while the machine is running.

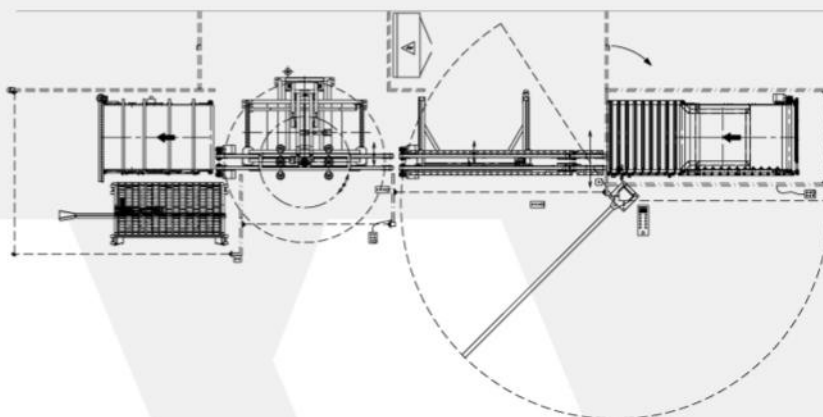
### SEALSYSTEM-F

For automatic gasket fitting on window frame elements, AMS proposes an extremely flexible machine that adapts to different frame types, applying one or more gaskets on each element, as required. Equipped with a self-learning system, the machine automatically positions itself according to piece shape and applies the gasket without the need for programming.



When supplied together with a TITANPRESS clamp, it allows gasket insertion while assembling the previous frame, significantly increasing productivity.

AMS has developed semi-automatic in-line solutions for **hardware and glass mounting, sealing and testing** of windows, allowing to speed-up the process and reduce operators' physical efforts as well as downtime related to materials handling.



# Louvered shutters finishing and assembly

AMS offers the manufacturers of louvered shutters a range of machines for:

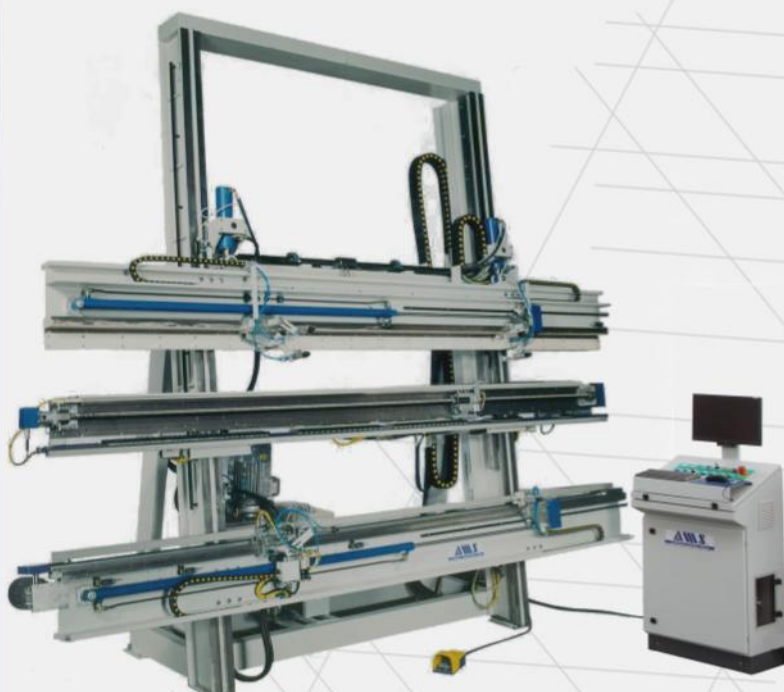
- **louvres cutting** and end-chamfering
- **shutter and louver assembly**
- **hardware mounting**
- **automatic handling** and **stacking**

## TITANPRESS-P

AMS has developed the TITANPRESS-P clamp, specifically designed to manufacture louvered shutters. It is also suitable for window frames and sashes assembling.

It is equipped with an electronically controlled, automatic variable-pitch rack which allows the operator to quickly and precisely position louvers, with no need for manual adjustments when size or typology of the louvered shutter change.

CNC-controlled, like all AMS clamps, it can be placed straight in line with a slot cutting/mortasing machine to reduce materials handling and need for programming.



We design and produce several types of workstations based on our customers' specific requirements, to carry out various finishing operations on sashes, louvered shutters, etc.

Among the most appreciated solutions are boring, milling and screwing workstations as well as hardware mounting stations with hardware right-size cut.

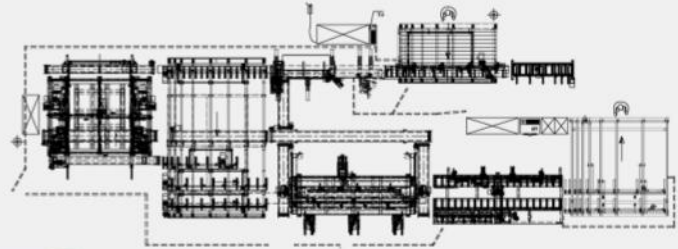


# Door frames processing lines

## COMBI series

AMS offers door manufacturers a selection of door frames processing machines and integrated lines which, starting from coated or painted profiles, carry out all necessary operations to obtain finished frames, even packaged, in a fully automated way and with maximum flexibility in terms of production mix.

Depending on configuration, production capacity ranges from 30" to 105" per complete frame.



Our machines allow performing the following operations on profiles:

- **gasket insertion**
- **45° and 90° cut and point-to-point boring**
- **routing for lock-keep plate, hidden hinges or pivot hinges**
- **anuba hinges mounting**
- **lock-keep plate mounting**
- **profiles automatic handling and stacking**



# Door processing and finishing

## DOORFRAME

Doorframe is AMS solution to automatically assemble honeycomb frames for doors.

Pre-cut laths, already loaded in the machine's automatic storage units, are automatically assembled and fixed by means of double upper and lower stapling in each corner, providing a frame having the necessary stiffness to be handled, and ready to be filled with honeycomb.

The automatic unloading and stacking system can be combined to the machine.



## INFERMAT-S

For automatic mounting of locks on doors, AMS proposes a machine that, selects the suitable lock, picking it up from storage units according to door typology, fits it in the seat and screws it down.

The operator is only required to periodically supply the storage units which are dimensioned according to the variety of locks typologies used .

For those manufacturers who apply a trademark on the door (logo, quality mark, etc..), a machine can be combined that glues a token, makes the seat on the door and fits the token in it, adequately oriented: a quality solution to give a personal touch to the finished product.



## Door milling machine

AMS has developed several solutions, that can also be integrated in line, to carry out specific operations that are often less efficiently performed on standard machines. Among these is the high-productivity milling machine for making pivot and hidden-hinges seats equipped with 5 processing units (2 front and 3 side ones), each provided with 3 interpolated axes and contrarotating spindles.





# Automation and material handling

AMS offers a wide range of automatic material handling solutions to automate the pick-up from stack, loading, unloading, handling and stacking operations, both for its own lines and for pre-existing lines and machines.

## FA series



## HA series



## MA series



According to requirements in terms of load capacity, motion dynamics and geometrical features of the load, solutions providing the best performance/price ratio are studied and proposed.

## Robot

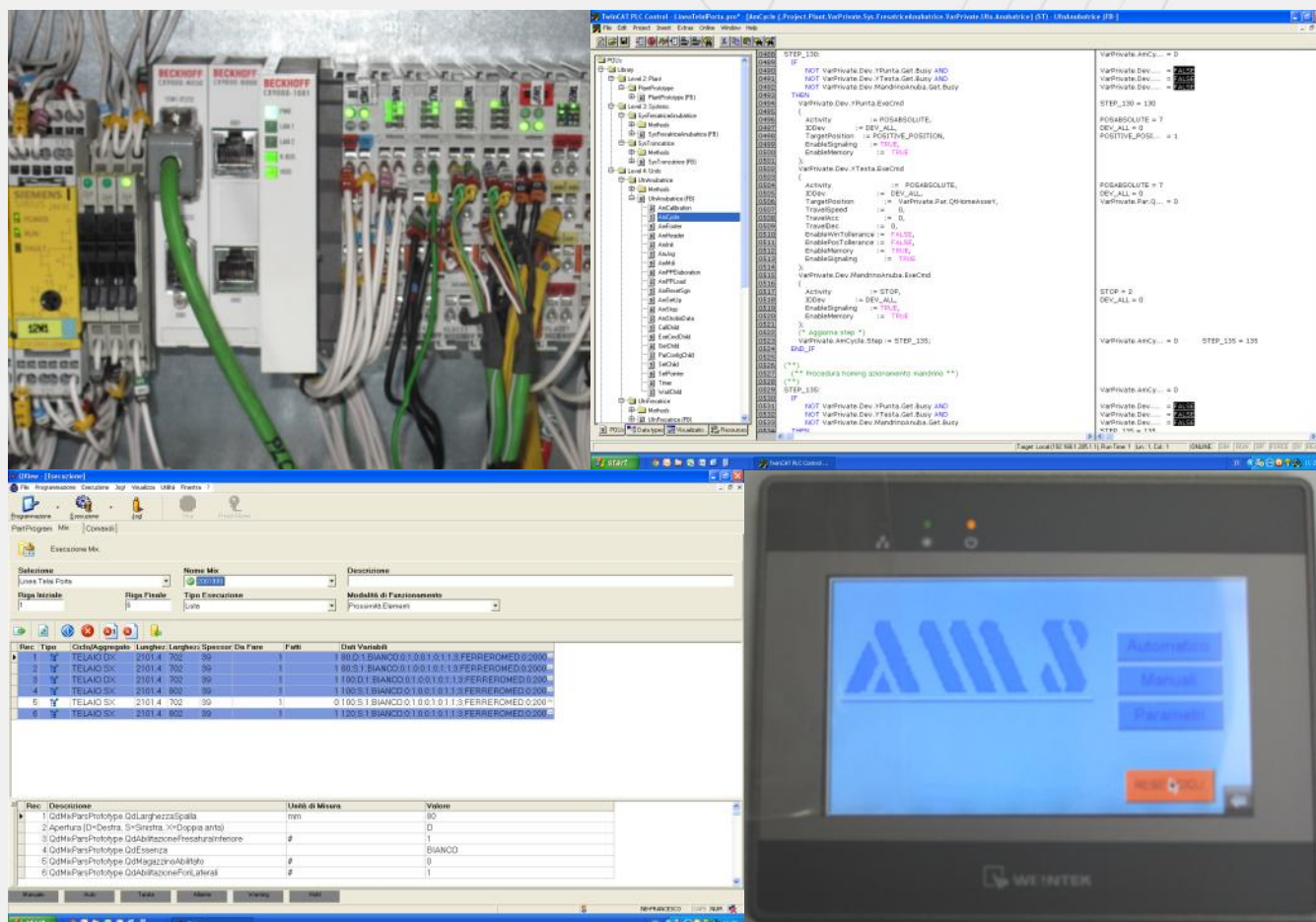


We also supply turnkey robotic solutions, designing and developing the accessories for each application and integrating anthropomorphic robots within our processing lines.

# Software

## PLC, HMI, motion control

AMS develops in-house all the PLC and visualization and control software of its machines and handling systems, in order to be able to act with maximum flexibility and autonomy, and to remain a single, valuable point of contact to solve issues raised by the customers. .



Maximum flexibility and ease of management and programming are ensured by a PC-based HMI (Human Machine Interface) application for visualization and control of machines and lines. Quick and clear diagnostics help to quickly identify and solve any problem, preserving productivity levels.

The possibility of activating the web-based remote-assistance service, ensures quick support by AMS engineers that can remotely perform real-time status check of the machine, immediately sort out any problem, perform software updates and effectively support the operator, especially during the initial stage after installation.

Thanks to the wide and well-established experience in PLC programming, motion control and HMI, we are also able to carry out **re-engineering** and **retrofitting** on machines equipped with obsolete control systems, allowing our customers to increase productivity and contain investments.

## ...manufacturing doors and windows

Audasso – (Italy)  
 Tre Biemme – (Italy)  
 BI-GI – (Italy)  
 Tre Elle – (Italy)  
 Bilokalnik – (Croazia)  
 Tre P & Tre Più – (Italy)  
 Brems Doors (Belgium)  
 Vanin – (Italy)  
 Capoferri Serramenti – (Italy)  
 Vertaglia Porte – (Italy)  
 Cipriani – (Italy)  
 Wright Window Systems (Ireland)  
 Cocif – (Italy)  
 Zanini – (Italy)  
 Comeca – (Italy)  
 Coop. Lavoranti in Legno – (Italy)  
 Cooplegno – (Italy)  
 Corno Infissi – (Italy)  
 Croci – (Italy)  
 Danese – (Italy)  
 Dorica Castelli – (Italy)  
 DDB Persiane – (Italy)  
 De Danieli – (Italy)  
 Drago – (Italy)  
 Elit Fönster (Sweden)  
 GD Dorigo – (Italy)  
 F.A.S. – (Italy)  
 Fenestra (Finland)  
 Ferrerolegno – (Italy)  
 F.lli Danese – (Italy)  
 F.lli Zanotti – (Italy)  
 F.lli Pietrelli – (Italy)  
 Garofoli - (Italy)  
 Idealdoor – (Italy)  
 IGDoors (United Kindomn)  
 IMIP Petrecca – (Italy)  
 Internorm (Austria)  
 IPEA – (Italy)  
 Italserramenti – (Italy)  
 Mobil 3 – (Italy)  
 Nasi Teresio e figli – (Italy)  
 Nusco Europeans Doors – (Italy)  
 Oikos Venezia – (Italy)  
 OTC Doors – (Italy)  
 Pail Serramenti – (Italy)  
 Pinum Productie (Romania)  
 Riboli – (Italy)  
 Svenska Fönster (Poland)  
 Taietti – (Italy)

## ...manufacturing profiles and surfaces

ALI Parquets – (Republic of San Marino)  
 Balconi Giannino – (Italy)  
 Bini Fernando – (Italy)  
 Castiglioni – (Italy)  
 Compensati Sud – (Italy)  
 Ebornabo Compensati – (Italy)  
 FAS – (Italy)  
 Fieramosca – (Italy)  
 F.lli Sbernini – (Italy)  
 Frigerio Cirillo & Figli – (Italy)  
 Gliacotto Cristoforo – (Italy)  
 ICM – (Italy)  
 Lolli – (Italy)  
 Sapsal – (Italy)

## ...manufacturing furniture

Artec – (Republic of San Marino)  
 Colombini – (Republic of San Marino)  
 C&G Salotti di Camporesi – (Italy)  
 Diesse Arredamenti – (Italy)  
 Doc Mobili – (Italy)  
 Doimo City Line – (Italy)  
 Itallegno – (Italy)  
 Mobilificio Nardi – (Italy)  
 Move – (Italy)  
 Schiffini Mobili e Cucine – (Italy)  
 Tonelli – (Republic of San Marino)



**AMS Automazioni S.p.A.**

**Strada del Lavoro 59**

**47892 Gualdicciolo**

**Republic of San Marino**

**Tel. (+378) 0549 999424 or**

**(+39) 0549 999424**

**Fax. (+378) 0549 999144 or**

**(+39) 0549 999144**

**e-mail: [info@amsautomazioni.com](mailto:info@amsautomazioni.com)**

**[www.amsautomazioni.com](http://www.amsautomazioni.com)**

