

Sand multiple, similar profiles with one tool

Combination Cylinder Rotorbrush and Angle Rotorbrush



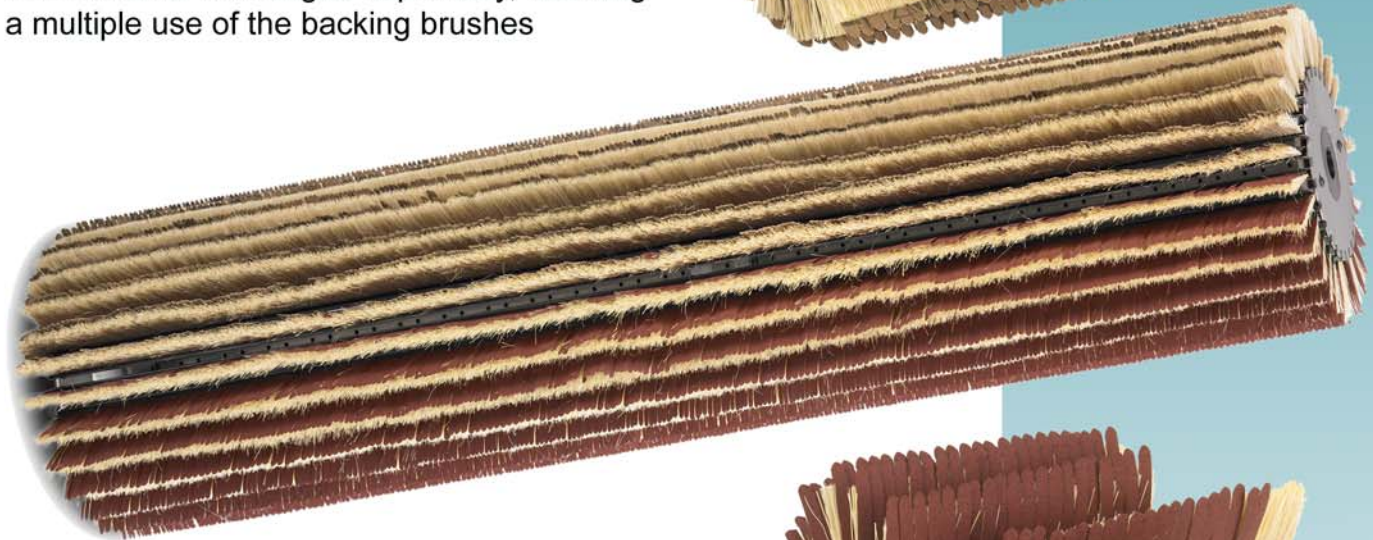
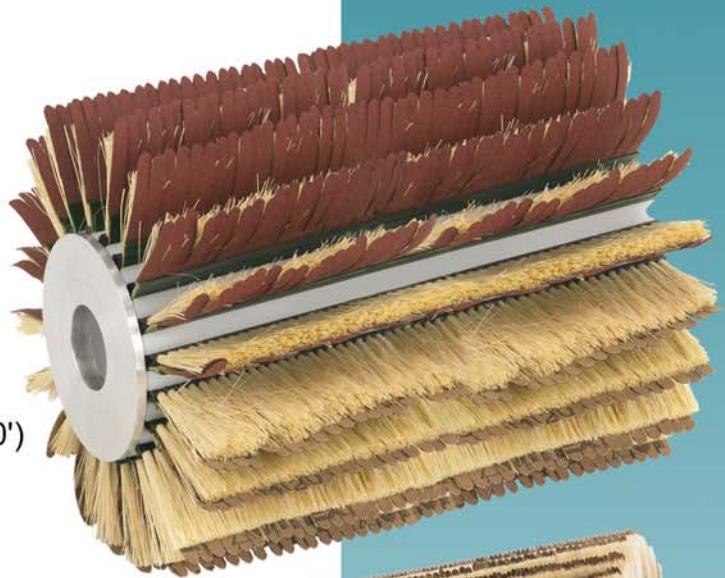
The Cylinder type tool and Angle Brushes can be used together or be used individually, depending on the profile or profile family.

The hub around the boring Arminius keeps compact in height and diameter to target a variety of application.

Cylinder - Rotorbrush

Available in diameters 100 mm to 250 mm (4' to 18') and heights of 50 mm to 2000 mm (2' to 80')

The abrasive is changed separately, enabling a multiple use of the backing brushes

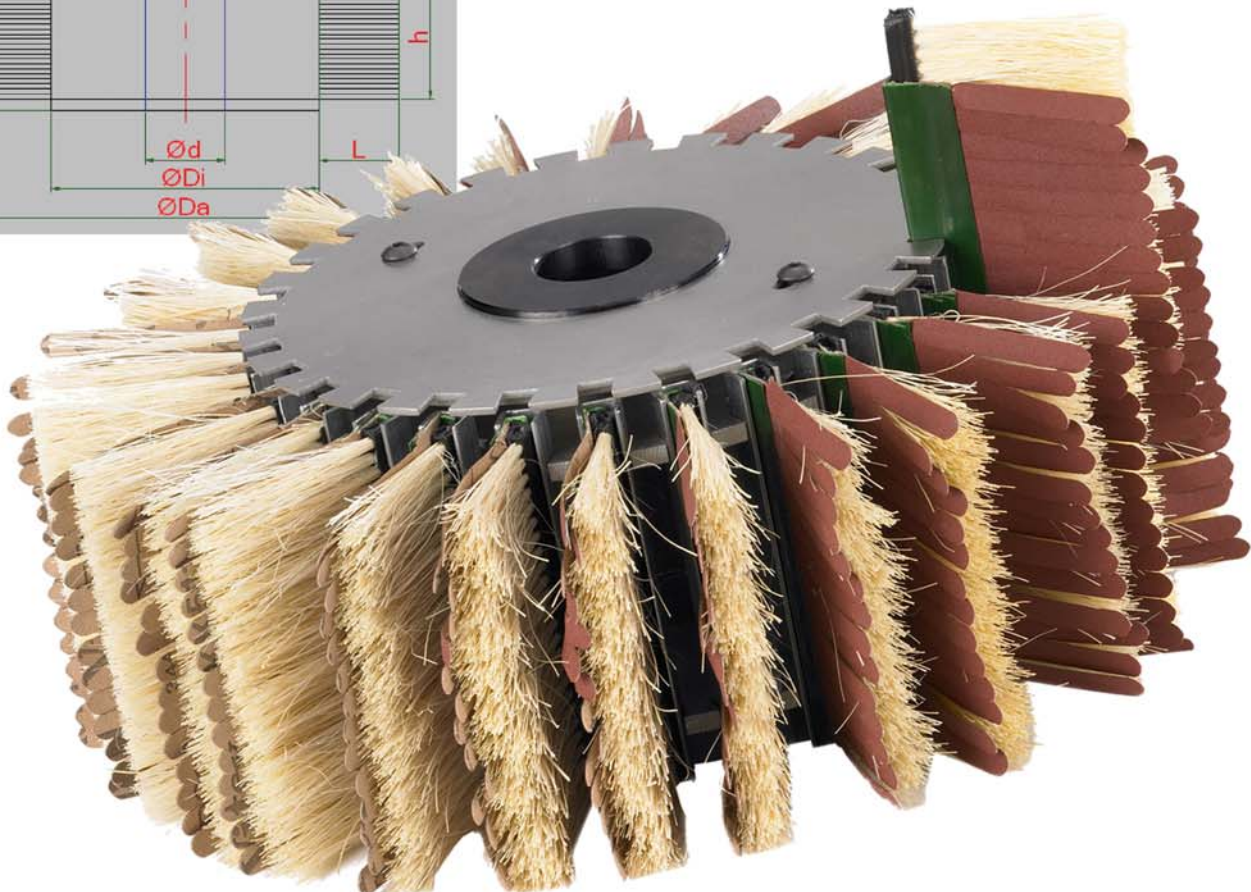
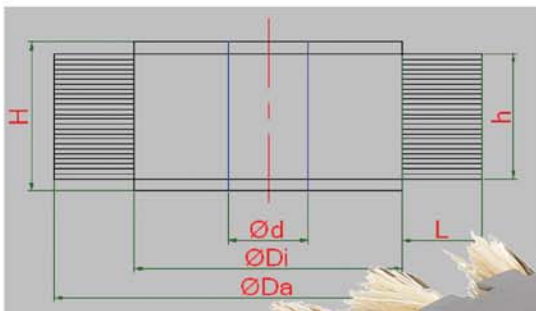


Change of abrasive

Only the abrasive cover is changed after wearing down, the backing brushes remain in use continuously

DA	Di			d	h	H	L	T	L	T	L	T
mm	mm			mm	mm	mm	mm		mm		mm	
120	60			20	50/75 - 2000	60/85 - 2010	30	10				
140	80			20-30	50/75 - 2000	60/85 - 2010	30	12				
160	100	60		20-30	50/75 - 2000	60/85 - 2010	30	16	48	10		
180	120	80	60	20-30	50/75 - 2000	60/85 - 2010	30	18	48	12	60	10
200	140	100	80	20-30	50/75 - 2000	60/85 - 2010	30	22	48	16	60	12
220	160	120	100	20-30	50/75 - 2000	60/85 - 2010	30	24	48	18	60	16
240	180	140	120	20-30	50/75 - 2000	60/85 - 2010	30	28	48	22	60	18
260	200	160	140	20-30	50/75 - 2000	60/85 - 2010	30	28	48	24	60	22
280	220	180	160	20-30	50/75 - 2000	60/85 - 2010	30	32	48	28	60	24
300	240	200	180	20-30	50/75 - 2000	60/85 - 2010	30	32	48	28	60	28

T = Number of fields



ARMINIUS Tooling Inc.

P.O. Box 68 • FORESTON, MN 56330
 Phone +1 320 294 5900 • Fax +1 320 294 5902
 info@ArminiusTooling.com
 www.ArminiusTooling.com



ARMINIUS-Schleifmittel GmbH

Postfach 6024 • D-32732 Detmold
 Phone 05 23 1 / 94 55 0 • Fax 05 23 1 / 94 55 99
 Verkauf: 05 23 1 / 94 55 13
 info@arminius.de • www.arminius.de