

BASCHILD

DRYING TECHNOLOGIES



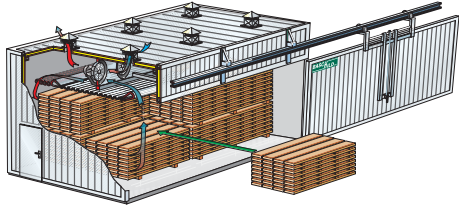
TDK

TRADITIONAL DRYING KILNS

Characteristics

- capacity from 30 to 400 m³ per drying cycle;
- final humidity rate up to 8-10%;
- pre-fabricated aluminium kiln framework, otherwise can be realised in bricks by the customer;
- rock-wool insulation;
- heating by hot water 90 °C, overheated water 120 °C, low pressure steam, thermo oil or propane/methane gas;
- electric equipment for ventilation, humidification and expulsion;
- electronic process controller Baschild ZOOM;
- loading lift with frontal forks or wheeled chart loading system (tunnel type);
- high pressure humidification system HPHS;
- heating recovery and energy saving integrated system;
- drying process and/or heating treatment (ISPM-15) for pallets;
- drying process for boards, beams, lamellae, firewood, elements.





▲ About 180 kilns more than 200 m³ capacity each installed in Germany – MAHILD partnership

◀ TDK kilns for softwood (Russia)



▲ TDK-T model (tunnel) – MAHILD partnership

▼ TDK-P model (ISPM-15)



ATK

HIGH TEMPERATURE KILNS

Characteristics

- treatment of boards, lamellae, elements and veneer from 160 °C to 230 °C;
- wood protection through steam;
- treatment that involves new aesthetic and functional properties;
- requalification of timber with chromatic defects;
- revaluation of low market value timber;
- electronic process controller Baschild ZOOM.

ATK kiln (Serbia) ▼





▲ 2 ATK kilns 80 m³ each (France)

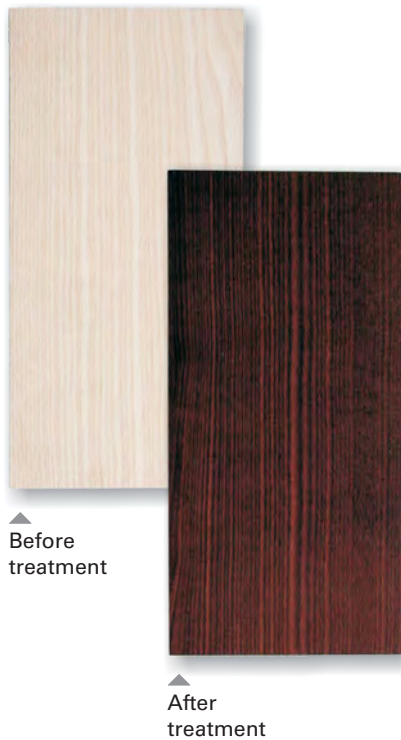
ATK kiln 20 m³ (Croatia) ▲

Samples of results obtainable with advanced technology kilns:

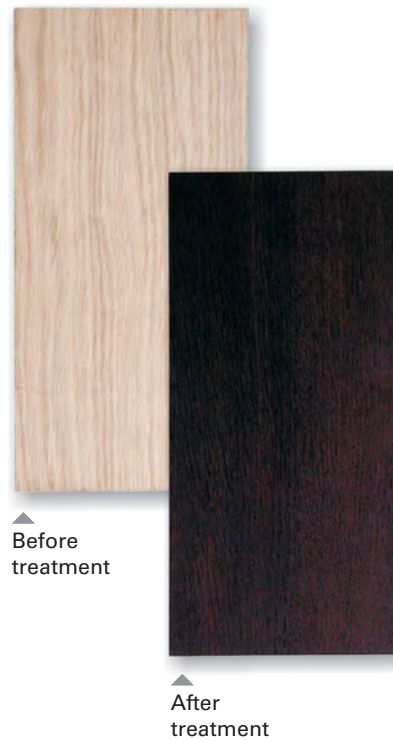
Maple



Ash



Oak



DVK

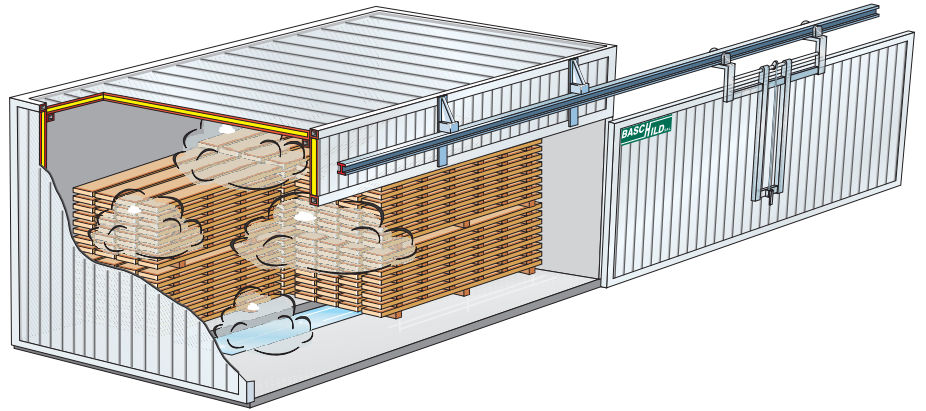
VAPORIZERS

Characteristics

- logs and boards steam treatment;
- pre-fabricated aluminium framework chamber;
- electronic process controller Baschild ZOOM.

Direct steam vaporizer DVK-D (France) ▼





DVK-I

INDIRECT STEAM VAPORIZERS

- production of steam by boiling of water contained in foundations built-in tank;
- boiling of water by stainless steel coils immersed into the foundation built-in tank and feeded by overheated water, steam, thermo oil or natural gas powered combustion chamber.

▼ Indirect steam vaporizer DVK-I by gas (Italy)



DVK-D

DIRECT STEAM VAPORIZERS

- steam produced by a generator, and following taken into steam chamber.

▼ Direct steam vaporizer DVK-D (Albania)



PDK

PRE-DRYING KILNS

Plants dedicated to semi-drying process of big wood quantity, as prelude to proper drying process.

Characteristics

- pre-fabricated aluminium kiln framework, otherwise can be realised in bricks by the customer;
- loading lift with frontal forks;
- capacity from 300 to 2.000 m³;
- final moisture rate up to 20-25%;
- electronic process controller Baschild ZOOM.





PDK pre-drying kiln 1.500 m³ (France)▲

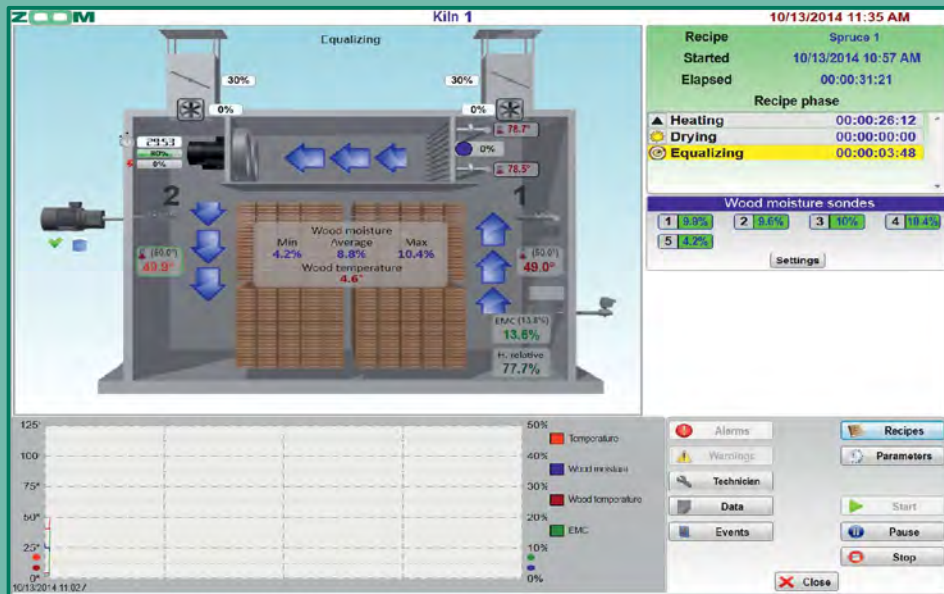
Inside view of a PDK pre-drying kiln – MAHILD partnership▼



ZOOM

AUTOMATIC CONTROLLER

- PLC technology with multiple access;
- management of several processes: drying, pre-drying, steaming, thermo treatment and phytosanitary sterilization;
- modular hardware made in Baschild and specifically developed for the timber drying industry;
- psychrometric system for the air humidity measurement;
- temperature probes inside the wood for a correct drying management;
- flexible and user-friendly drying settings;
- feedback, alarms, safety functions;
- consumption management;
- 15" touch screen control panel beside the kiln;
- integrated web server for a native remote management (teleservice);
- multilingual and multi-user.



TURN-KEY PLANTS

Engineering and realization of energy production lines for functioning of Baschild plants.



Source of energy: wood waste.



Burning into biomass boiler.

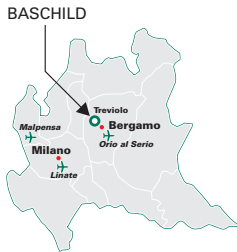


Hydraulic plant for heating fluid feeding.



Complete timber drying plant.

Company



BASCHILD
DRYING TECHNOLOGIES

Baschild designs and builds each product in Italy, in the headquarter of Treviolo – Bergamo.

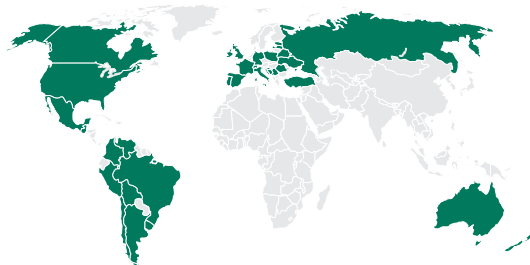
The innovation is constantly pursued to offer high quality kilns and services.

The company collaborates with academics and universities to deepen the knowledge concerning the drying process.

Baschild's Research & Development Department conceives both hardware and software and makes use of a laboratory to test the most innovative wood treatments.



BASCHILD / MAHILD Commercial network



America:

Argentina
Bolivia
Brazil
Canada
Chile
Colombia
Guatemala
Mexico
Peru
United States
Uruguay
Venezuela

Europe:

Belarus
Bosnia Herzegovina
Croatia
Denmark
Estonia
France
Germany
Ireland
Italy
Latvia
Montenegro
Poland
Portugal
Romania
Russia
Serbia
Spain
Switzerland
Turkey
Ukraine
United Kingdom

Oceania:

Australia
New Zealand

BASCHILD

DRYING TECHNOLOGIES

Via Degli Assini 14/16/18
24048 – Treviolo (BG)
ITALY
Tel. + 39 035 201 340
Fax: + 39 035 201 341
E-mail: info@baschild.com
Skype: sales.baschild

www.baschild.com