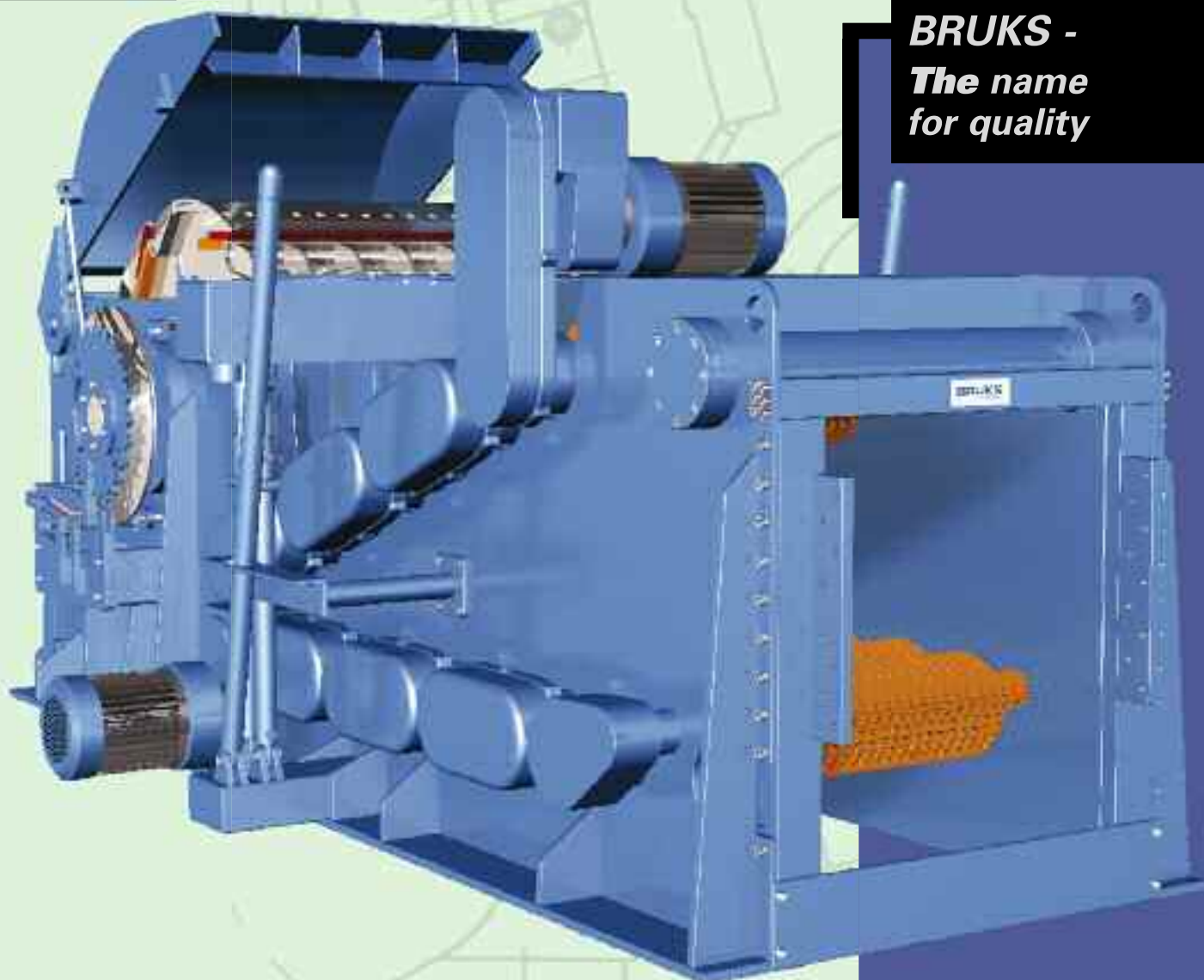


# *Drum Chipper*



**BRUKS -  
The name  
for quality**

# **BRUKS<sup>®</sup>**

*BRUKS - one of the world's leading manufacturers of machines and equipment for the pulp, board and recycling industries as well as the handling of sawmill by-products.*

# Proven Technology

**Perfected products**  
More than 50 years of experience  
and continuous development of  
drum chippers



## Bearings

Heavy-duty self-aligning bearings, centred in steel housings which are bolted to the side walls of the machine.



## Market oriented development

We continuously improve our products, in order to meet the latest market requirements, such as recycling and environmental technologies.



## Feed rollers

The feed rollers are provided with special teeth, which are surface hardened by a heat treatment process; resulting in a particularly high wear resistance. On request BRUKS can deliver the rollers with exchangeable wear segments.

## Chain drive

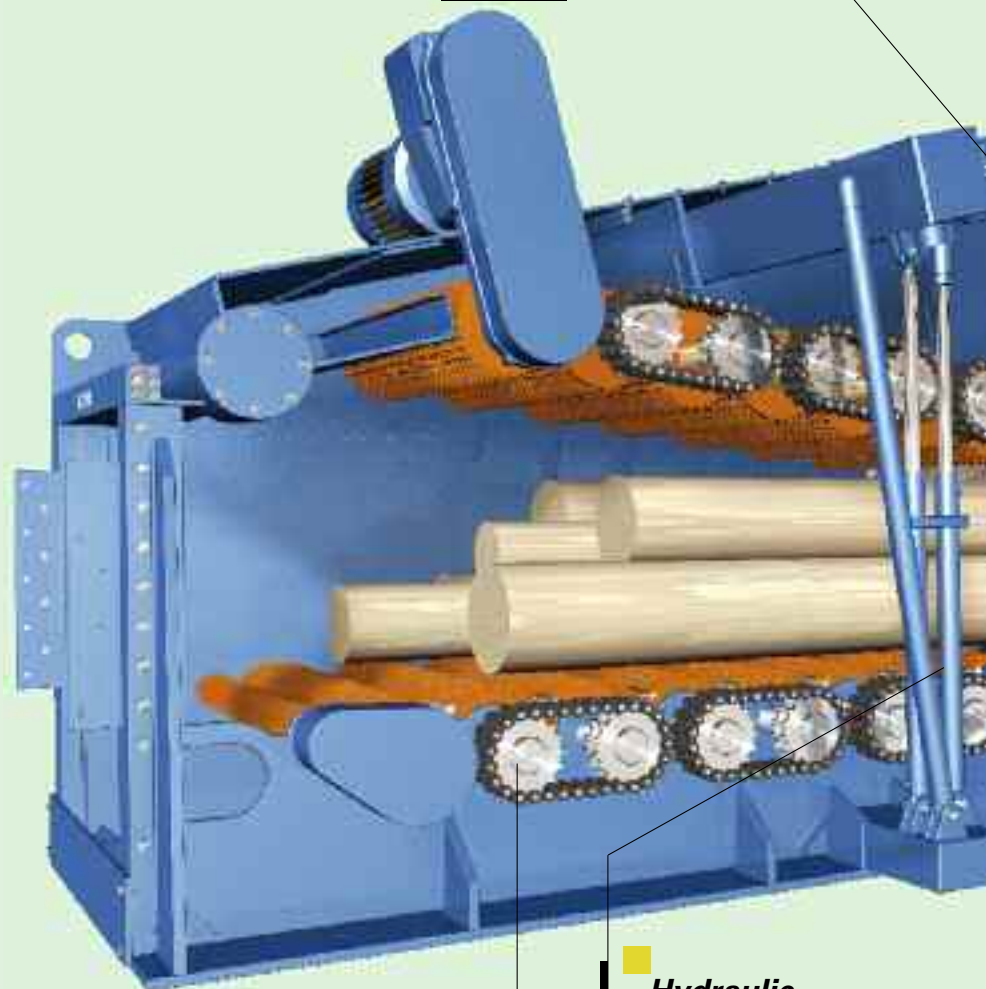
oversized chain drive in oil bath for drive of infeed rollers



## Hydraulic- or pneumatic-cylinders

to regulate the pressure of the upper feed rollers

to open the upper feed rollers for maintenance and easy cleaning



# BRUKS®

Electro hydraulic quick-change attachment, heavy duty screen basket for accommodation of the screen plates, optional version made of wear-resistant HARDOX steel.  
Preferred range of application:  
Micro wood chips

## ■ **Screen**



## ■ **Rotor brake and turning device**

Electro hydraulic rotor brake:  
Higher machine safety  
because of quicker machine standstill,  
reduction of time for change of knives

Electro hydraulic rotor turning device:  
The rotor is safely turned and fixed in  
the correct position for change of knives



## ■ **Counterknife/anvil**

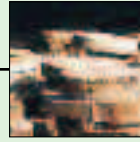
Electro-hydraulic assisted changing  
of counterknife/anvil

## **Product advantages**

- **Efficient and controlled feeding of material**
- **Secure and rapid clamping of knives**
- **Heavy duty rotor bearings and housings**
- **Replaceable wear parts**
- **High quality chips due to innovative technology**

# No compromises

**Complete systems**  
from one source to guarantee  
compatibility and reliability



## The rawmaterial

BRUKS drum chippers are suitable for producing high quality chips from :

round wood, waste wood, lily pads, slabs, trimmings, edges, veneer residuals, railway sleepers, wooden poles, urban fibre ...

## High quality chips

for further processing with knife ring flakers and refining mills in the board industry

as high quality TMP chips by special cutting geometry

for boiler fuel to produce energy

## BRUKS - Drum Chippers : tested and proven more than 10.000 times world-wide

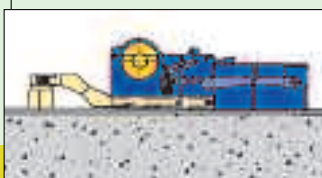
BRUKS drum chippers are operating all over the world and under the most difficult conditions

- proven technology
- built to the highest quality standard
- heavy duty design

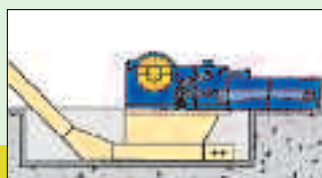


## Discharge of chips

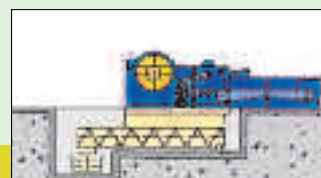
Some examples :



with integrated chain conveyor



with chain conveyor



with screw conveyor and conveyor belt



pneumatically

# BRUKS®



## **Drum Chipper**

for chipping all types of wood residues up to log wood diameters of 1.2 m



## **Screening machine**

to screen out up to 4 fractions



## **Tubulator**

cost-efficient handling of bulk material over large distances

## **Product advantages**

**Flexible lay out**

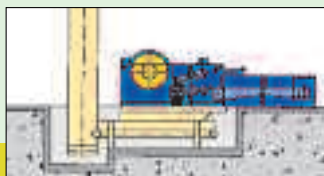
**Universal application also in existing plants**

**Chipping of all types of wood**

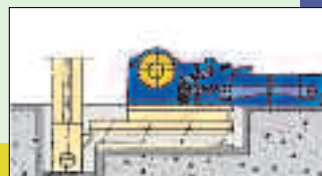
**Quality chips to meet most stringent specifications**



with inclined screw conveyor



with belt conveyors



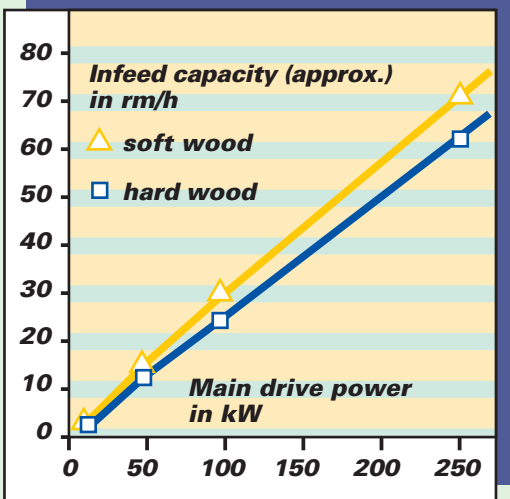
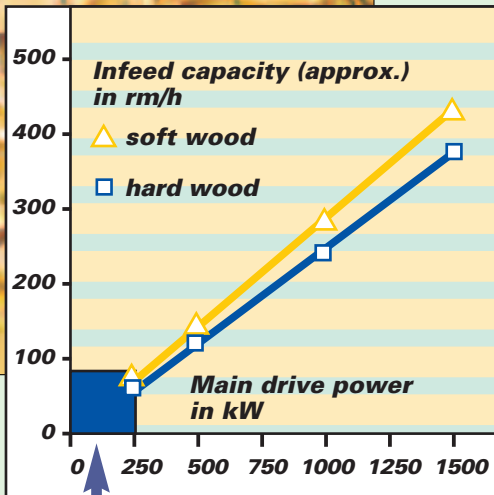
with vibrating conveyors (simultaneous screening possible) and bucket elevator



inclined

# The facts:

Satisfaction  
guaranteed



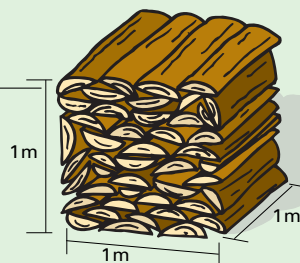
We reserve the right for technical modifications.

## Capacity diagrams

for determining the  
required power

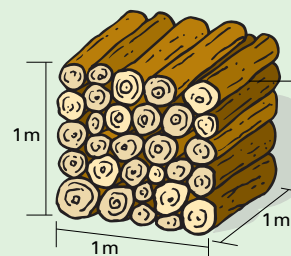
### 1 rm slabs

= 0,60 m<sup>3</sup> solid wood  
= 1,56 m<sup>3</sup> loose chips

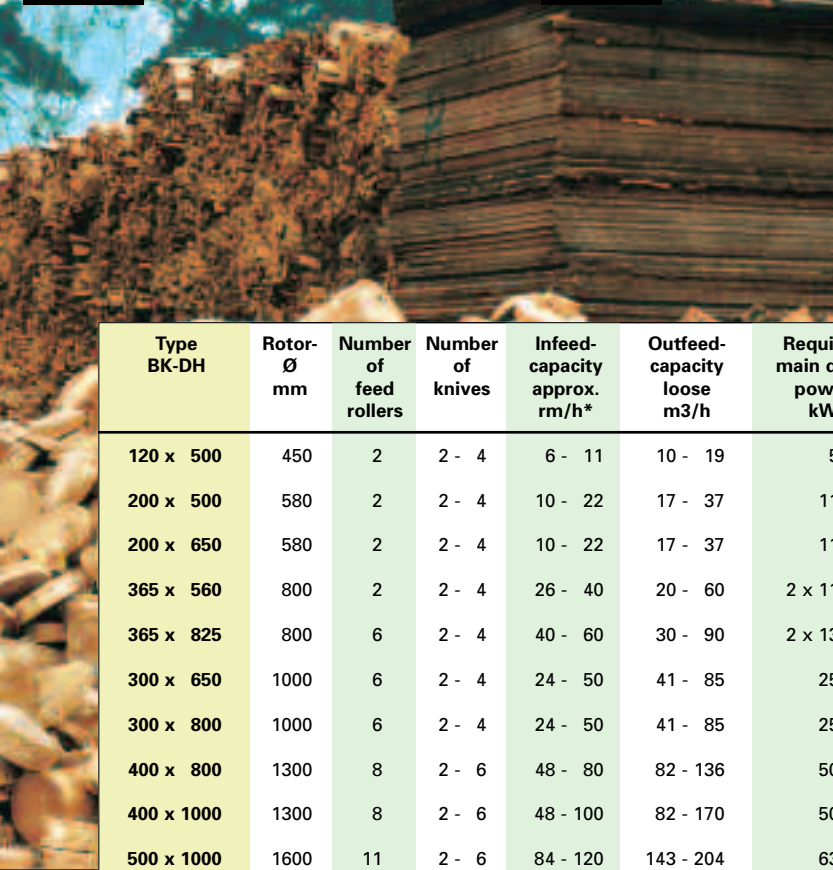


### 1 rm logs

= 0,75 m<sup>3</sup> solid wood  
= 2,00 m<sup>3</sup> loose chips



# BRUKS®



## Product advantages

- 100 years of proven quality
- High capacity
- Reliability
- Low maintenance requirements
- Service friendly
- Durability
- World-wide tested and proven

Type BK-DH	Rotor-Ø mm	Number of feed rollers	Number of knives	Infeed-capacity approx. m <sup>3</sup> /h*	Outfeed-capacity loose m <sup>3</sup> /h	Required main drive power kW	Weight approx. kg
120 x 500	450	2	2 - 4	6 - 11	10 - 19	55	2.150
200 x 500	580	2	2 - 4	10 - 22	17 - 37	110	3.060
200 x 650	580	2	2 - 4	10 - 22	17 - 37	110	3.760
365 x 560	800	2	2 - 4	26 - 40	20 - 60	2 x 110	4.200
365 x 825	800	6	2 - 4	40 - 60	30 - 90	2 x 132	5.000
300 x 650	1000	6	2 - 4	24 - 50	41 - 85	250	8.700
300 x 800	1000	6	2 - 4	24 - 50	41 - 85	250	9.900
400 x 800	1300	8	2 - 6	48 - 80	82 - 136	500	12.100
400 x 1000	1300	8	2 - 6	48 - 100	82 - 170	500	13.100
500 x 1000	1600	11	2 - 6	84 - 120	143 - 204	630	29.000
500 x 1200	1600	11	2 - 6	84 - 150	143 - 255	630	32.500
850 x 1200	2000	15	2 - 8	180 - 260	306 - 442	1500	52.000
1000 x 1200	2400	17	2 - 10	200 - 350	350 - 580	2500	85.000
1200 x 1500	2800	18	2 - 10	300 - 470	510 - 799	2500	125.000

\*The listed infeed capacities refer to the raw material and a chip length of 30 mm. Other chip lengths result in different capacities.

The type of raw material also has an influence on the capacity.

# The Delivery Program:

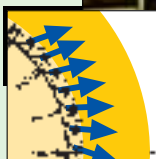
Turn Key Supply



## Design - Manufacturing - Installation - Spare Parts - Service

- Drum Chippers, Disc Chippers, Bark Shredders, Re-Chippers
- Universal Chippers, Hammer Mills
- Knife-Ring and Beating Flakers, Refining Mills
- Screen Machines
- Tubulators®
- Butt-Flare Reducers
- Belt Conveyors, Vibrating Conveyors,
- Chain Conveyors, Dosing Conveyors, Cross Conveyors

Complete chip, flake and fiber processing plants,  
 wood fuel preparation for power plants,  
 production plants for micro chips (pellet production),  
 saw mill residue handling, wood yard systems as well as  
 recycling plants for waste wood



### SWEDEN

#### BRUKS AB

Box 46 · Västergatan  
 820 10 Arbrå  
 Sweden  
 Phone: +46 (0)278-642500  
 Fax: +46 (0)278-642520  
 info@bruks.com

#### BRUKS Celltec AB

Nygatan, 24  
 891 34 Örnsköldsvik  
 Sweden  
 Phone: +46 (0)660-294550  
 Fax: +46 (0)660-294570  
 info@bruks.com

#### BRUKS Gvc AB

Strandvägen 64  
 870 52 Nyland  
 Sweden  
 Phone: +46 (0)612-772480  
 Fax: +46 (0)612 225 83  
 info@bruks.com

#### BRUKS Rotom

Box 46 · Västergatan  
 820 10 Arbrå  
 Sweden  
 Phone: +46 (0)278-642500  
 Fax: +46 (0)278-642520  
 info@bruks.com

### GERMANY

#### BRUKS Klöckner GmbH

Grabenstr. 1  
 57647 Hirtscheid  
 Germany  
 Phone: +49 (0)2661-280  
 Fax: +49 (0)2661-28180  
 info.de@bruks.com

### USA

#### BRUKS Rockwood Inc.

5975 Shiloh Road, Suite 109  
 Alpharetta, GA 30005  
 USA  
 Phone: +1-770-849-0100  
 Fax: +1-770-495-7195  
 info.us@bruks.com

#### BRUKS Rockwood Inc.

P.O. Box 2466  
 Snohomish, WA 98291  
 USA  
 Phone: +1-360-863-2947  
 info.us@bruks.com

### CHINA

#### BRUKS Beijing Representative Office

Zhu Zong Plaza, Room 1210  
 Chao Yang District  
 Huan Zhong Lu 25  
 100020 Beijing  
 China  
 Phone: +86-136-0114-8282  
 info@bruks.com