

# 4-side Planer/ Moulder

**M-412 (Three Phase)**

**M-410 (Three Phase)**

**M-410S (Single Phase)**

Extremely compact construction  
great moulding / planing capacity  
extremely flexible performance  
affordable price.

All these can be found on **NEW**  
CKM 4 side planer / moulder.



## DESIGNED FOR

- Farm working shop
- School shop
- Hobby
- Small furniture factory

# CKM

CHENG KUANG WOOD MACHINERY WORKS CO., LTD.

# 4-Side Planer / Moulder

**CKM**<sup>®</sup>  
Quality & Service

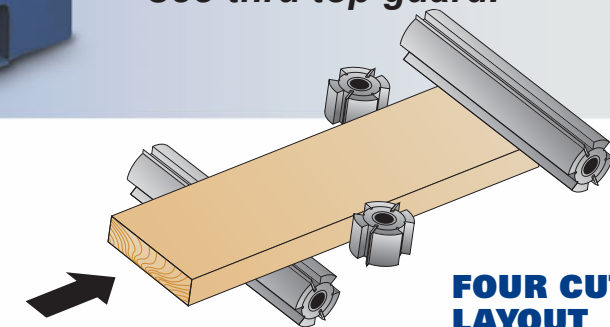
## GREAT CAPACITY :

- Planing 13"(W) x 9"(D).
- 2-side planing / moulding 13-5/8"(W) x 9"(D).
- 4-side planing / moulding 12"(W) x 4"(D).

## OUTSTANDING FEATURES:

- Three phase motor drive.
- Powerful motor drive for each spindle.
- Digital position control for accurate and easy setting.
- 7,000 rpm high spindle speed.
- Compact construction. Maximum stability.
- Variable feed speed.
- See-thru top guard.

**M-412**  
(Three Phase Motor)



**FOUR CUTTERHEADS  
LAYOUT**



### CENTRALIZED CONTROL PANEL

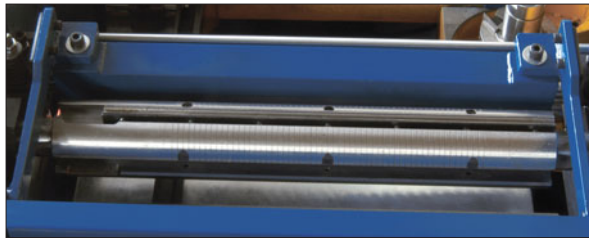
All motion controls of the machine are centralized on the control panel, located at the left side of the machine for easy access and operation convenience.

Each cutterhead is individually controlled on the control panel.



### TABLE ADJUSTMENT

The entire table can be raised or lowered by turning a handwheel, equipped with a mechanical meter for accurate reading of the table adjustment.



### TOP HORIZONTAL SPINDLE

Equipped with two planer knives and two pattern knives for planing and moulding operations at a time.



### VARIABLE FEED SPEED

Variable feed speed is achieved through a disco type variable speed unit combined with gear reducer, making this mouldrer ideal for cutting soft and hard wood material.

Variable feed speed range is 11-52 feet per minute.



### LEFT VERTICAL SPINDLE ADJUSTMENT

The left vertical spindle can be adjusted in forward and backward direction to suit workpiece width. A mechanical meter is equipped for accurate reading of the spindle adjustment amount.

## MODEL M-412

### PLANING

Width	13" (365 mm)
Depth	7/16"~9" (12~230 mm)

### 2-SIDE PLANING/MOULDING

Width	13-5/8"(346 mm)
Depth	7/16"~9" (12~230 mm)

### 4-SIDE PLANING/MOULDING

Width	0~12" (0~306mm)
Depth	7/16"~4" (12~100mm)

### TOP HORIZONTAL SPINDLE

Width	17-15/16"(455 mm)
Max. planing depth	5/16" (8 mm)
Max. moulding depth	3/4" (19 mm)
Speed	7000 R.P.M.
Cutterhead diameter	2-3/4" (72 mm)
Motor	7-1/2 HP (5.5 Kw) x 1

### BOTTOM HORIZONTAL SPINDLE

Width	13-5/8"(346 mm)
Max. planing depth	1/4" (6 mm)
Max. moulding depth	3/16" (5 mm)
Speed	7000 R.P.M.
Cutterhead diameter	2-3/4" (72 mm)
Motor	5 HP (3.7 Kw) x 1

### RIGHT & LEFT VERTICAL SPINDLES

Max. cutting height	4" (100 mm)
Max. cutting depth	13/16" (21 mm)
Spindle diameter	1-1/4" (31.75 mm)
Max. cutter head diameter	51/2" (140 mm)
Speed	7000 R.P.M.
Cutterhead diameter	3-1/2" (90 mm)
Motor	4.1 HP (3 Kw) x 2

### TABLE

Area	1125 x 685 mm
Elevation	230 mm
Power table (raise)	120 w x 1

### FEED SYSTEM

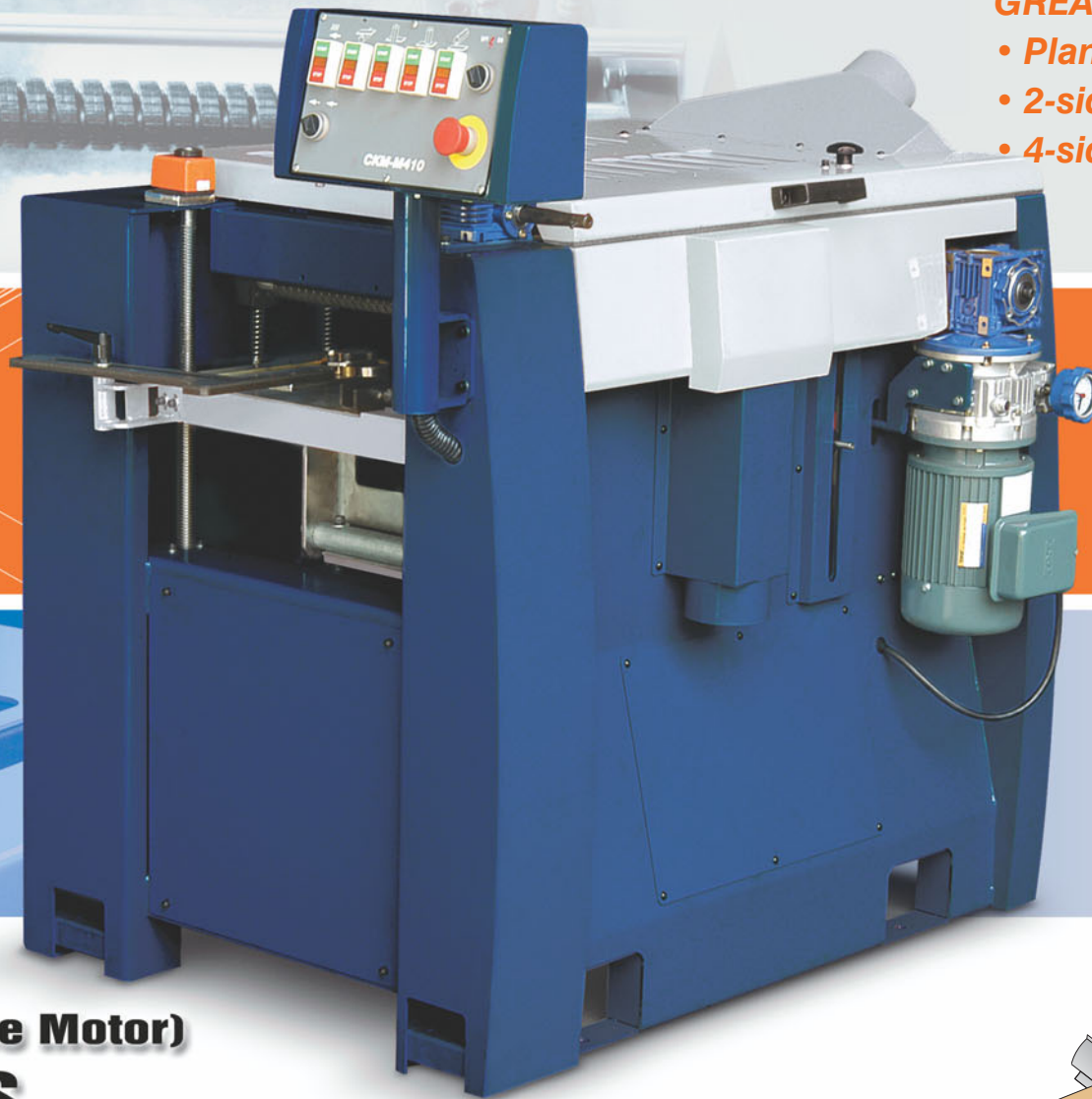
Speed (variable)	11-52 ft/min.
Motor	1/2 HP (0.375 Kw) x 1

### MACHINE SIZE

Machine dimensions (L x W x H)	1485 x 1265 x 1216 mm
Packing dimensions (L x W x H)	1350 x 1140 x 1130 mm
Net weight	635 kgs (1400lbs)
Gross weight	730 kgs (1610lbs)

# 4-Side Planer / Moulder

**CKM**<sup>®</sup>  
Quality & Service



## GREAT CAPACITY :

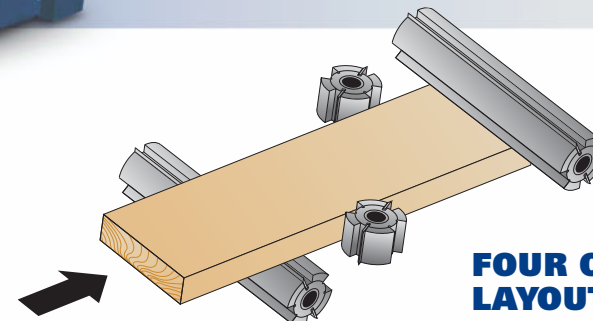
- Planing 11-5/8"(W) x 9"(D).
- 2-side planing / moulding 11-3/4"(W) x 9"(D).
- 4-side planing / moulding 10-1/4"(W) x 4"(D).

## OUTSTANDING FEATURES:

- Single or three motor drive.
- Powerful motor drive for each spindle.
- Mechanical meter for accurate reading of thickness adjustment.
- 7,000 rpm high spindle speed.
- Compact construction. Maximum stability.
- Variable feed speed.
- See-thru top guard.

**M-410**  
(Three Phase Motor)

**M-410S**  
(Single Phase Motor)



**FOUR CUTTERHEADS  
LAYOUT**

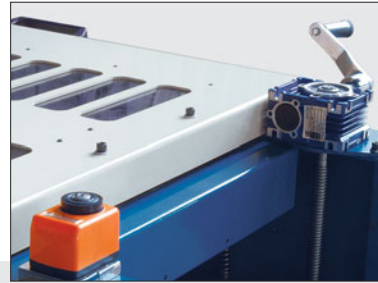
CHENG KUANG WOOD MACHINERY WORKS CO., LTD.



### CENTRALIZED CONTROL PANEL

All motion controls of the machine are centralized on the control panel, located at the left side of the machine for easy access and operation convenience.

Each cutterhead is individually controlled on the control panel.



### TABLE ADJUSTMENT

The entire table can be raised or lowered by turning a handwheel, equipped with a mechanical meter for accurate reading of the table adjustment.



### TOP HORIZONTAL SPINDLE

Equipped with two planer knives and two pattern knives for planing and moulding operations at a time.



### VARIABLE FEED SPEED

Variable feed speed is achieved through a disco type variable speed unit combined with gear reducer, making this mouldrer ideal for cutting soft and hard wood material.

Variable feed speed range is 11-52 feet per minute.



### LEFT VERTICAL SPINDLE ADJUSTMENT

The left vertical spindle can be adjusted in forward and backward direction to suit workpiece width. A mechanical meter is equipped for accurate reading of the spindle adjustment amount.

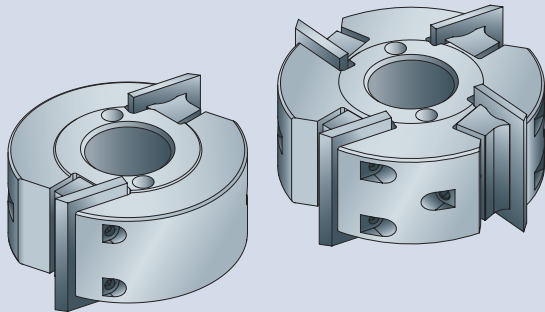
MODEL	M-410 (Three Phase)	M-410S (Single Phase)
<b>PLANING</b>		
Width	11-5/8" (320 mm)	11-5/8" (320 mm)
Depth	7/16"~9" (12~230 mm)	7/16"~9" (12~230 mm)
<b>2-SIDE PLANING/MOULDING</b>		
Width	11-3/4" (300 mm)	11-3/4" (300 mm)
Depth	7/16"~9" (12~230 mm)	7/16"~9" (12~230 mm)
<b>4-SIDE PLANING/MOULDING</b>		
Width	0~10-1/4" (0~260 mm)	0~10-1/4" (0~260 mm)
Depth	7/16"~4" (12~100 mm)	7/16"~4" (12~100 mm)
<b>TOP HORIZONTAL SPINDLE</b>		
Width	16" (410 mm)	16" (410 mm)
Max. moulding depth	3/8" (10 mm)	3/8" (10 mm)
Max. planing depth	5/16" (8 mm)	5/16" (8 mm)
Speed	7000 R.P.M.	7000 R.P.M.
Cutterhead diameter	2-27/32" (72 mm)	2-27/32" (72 mm)
Motor	4.1 HP (3 Kw) x 1	3 HP (2.2 Kw) x 1
<b>BOTTOM HORIZONTAL SPINDLE</b>		
Width	12" (300 mm)	12" (300 mm)
Max. moulding depth	3/16" (5 mm)	3/16" (5 mm)
Max. planing depth	5/32" (4 mm)	5/32" (4 mm)
Speed	7000 R.P.M.	7000 R.P.M.
Cutterhead diameter	2-27/32" (72 mm)	2-27/32" (72 mm)
Motor	4.1 HP (3 Kw) x 1	3 HP (2.2 Kw) x 1
<b>RIGHT &amp; LEFT VERTICAL SPINDLES</b>		
Max. cutting height	4" (100 mm)	4" (100 mm)
Max. cutting depth	13/16" (21 mm)	13/16" (21 mm)
Spindle diameter	1-1/4" (31.75 mm)	1-1/4" (31.75 mm)
Speed	7000 R.P.M.	7000 R.P.M.
Cutterhead diameter	3-1/2" (90 mm)	3-1/2" (90 mm)
Motor	4.1 HP (3 Kw) x 2	3 HP (2.2 Kw) x 2
<b>TABLE</b>		
Area	1030 x 630 mm	1030 x 630 mm
Elevation	230 mm	230 mm
<b>FEED SYSTEM</b>		
Speed (variable)	11-52 ft/min.	11-52 ft/min.
Motor	1/2 HP (0.375 Kw) x 1	1/2 HP (0.375 Kw) x 1
<b>DUST HOOD OUTLET</b>		
	Speed (variable)	4" (101.6mm) x 4
<b>MACHINE SIZE</b>		
Machine dimensions (L x W x H) mm	1375 x 1080 x 1210	1375 x 1080 x 1210
Packing dimensions (L x W x H) mm	1230 x 1080 x 1130	1230 x 1080 x 1130
Net weight	525 kgs (1157 lbs)	525 kgs (1157 lbs)
Gross weight	620 kgs (1366 lbs)	620 kgs (1366 lbs)

# Optional Accessories :

## For Increasing Operational Convenience

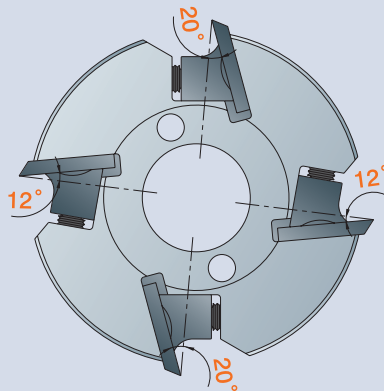
### VERTICAL SPINDLE CUTTER (Optional)

- Cutter height range 38 and 100mm (1/2" and 4").
- Choice of two cutter configuration.



### TWO CUTTING ANGLES ON ONE CUTTER

- 4-knife cutter can be mounted with two different cutting angles of knives, allowing for cutting soft and hard wood.



### DUST BLOWER (OPTIONAL)

- The dust blower is driven by a 3HP motor, single or three phase power.
- Designed with 4 dust suction ports.



### EASY MOBILITY (OPTIONAL)

- The moulder is equipped with four wheels at the four corners for easy movement by only one person.
- The operator may treadle on the foot plate for raising the machine when moving the machine is required.



### UNIVERSAL KNIFE GRINDER (OPTIONAL)

- Designed for sharpening straight knife and profile knife.
- Foot switch control for convenience.



### C-30HP. / C-40HP. / C-50HP. AUTOMATICALLY OPERATED ROTARY PHASE CONVERTER

- Suitable for converting 230V, 1 phase to 230V, 3 phase power.
- Multiple motor control within the 95% of the rated horsepower.

MODEL	NANE PLATE LOAD
C-30HP	30HP
C-40HP	40HP
C-50HP	50HP

**Permissible Load 95%**

### INFEED AND OUTFEED TABLE EXTENSION (OPTIONAL)

The moulder is available to equip with table extensions at infeed and outfeed end . They provide solid support for big wood.

The in feed and outfeed table are made of steel plate. Each one measures 1210mm(L)x317mm(W) on model M-410, and 1210mm(L)x362mm(W) on model M-412.



# Profile Knives :

CKM provides an extraordinary selection of high quality profile knives to meet your specific requirements.

