



COBUS NCAD

Highlights

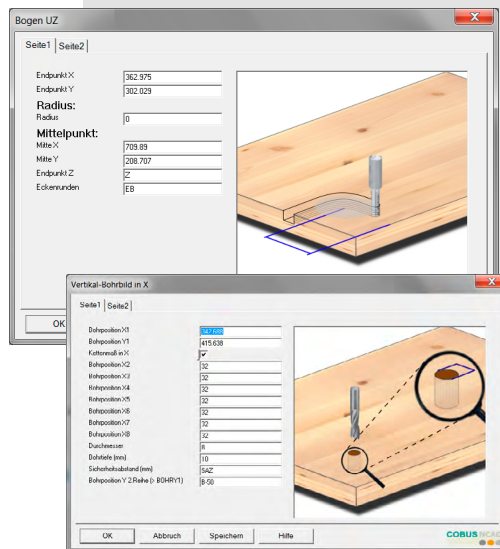
In Focus: Increased user-friendliness

CAD / CAM



Icon dialogues with easy handling

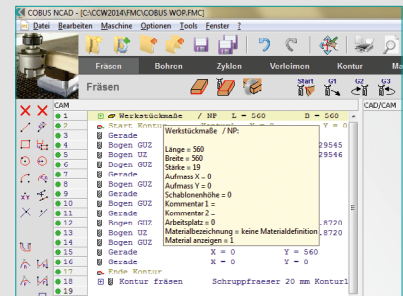
Continuous expansion and development of the dialogues include a great number of parameters. Extensive help graphics ensure clarity and support for the users.



The selected pictures appear as soon as the cursor is placed within the relevant parameter box.

Tooltip in Textview

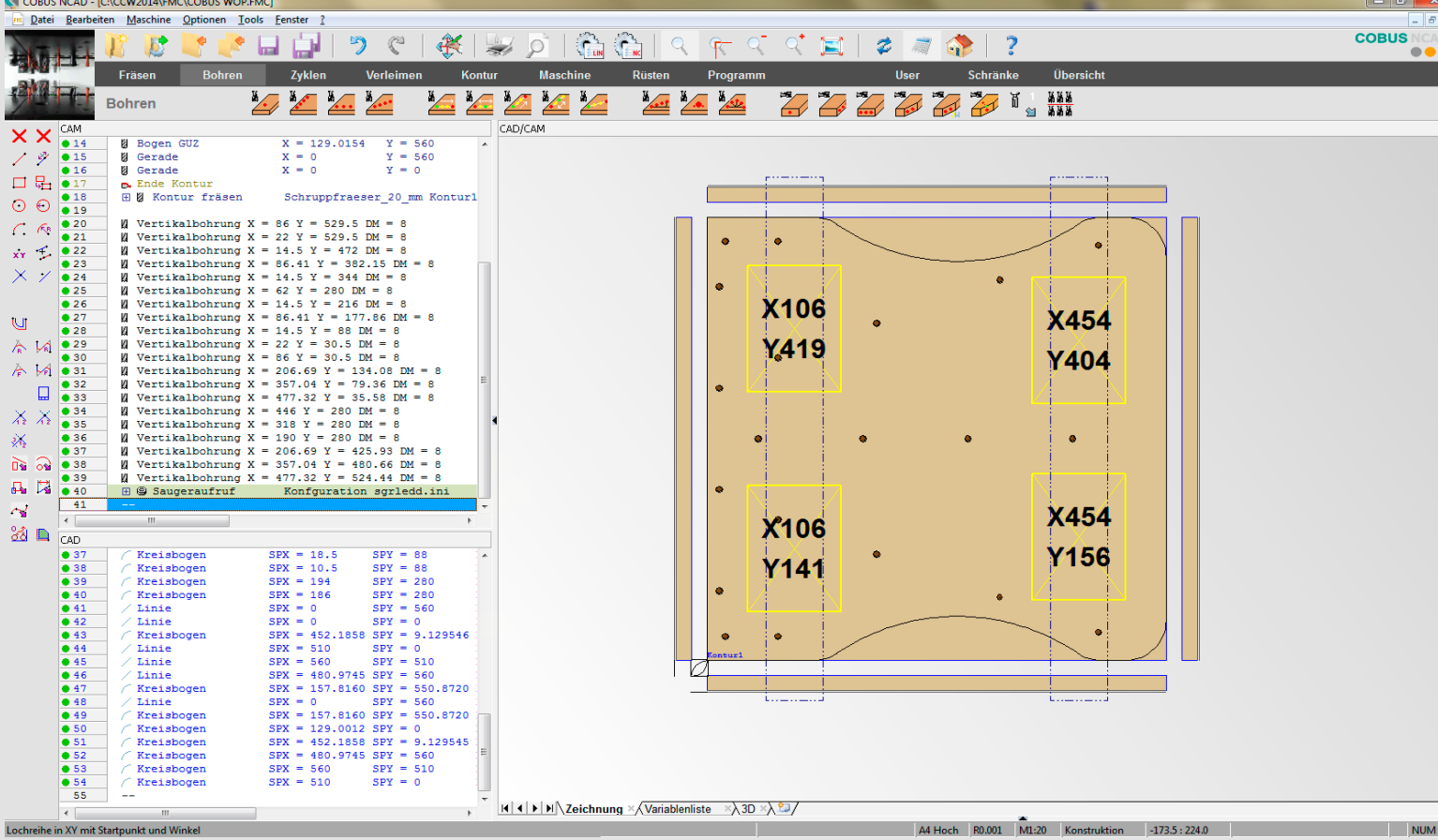
In the textview you can see the parameters of dialogue page 1 and its values. The value parameters are visible without opening a dialogue. This eases programming work.



released for



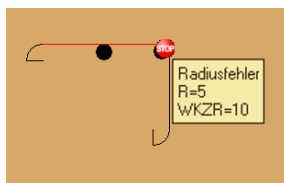
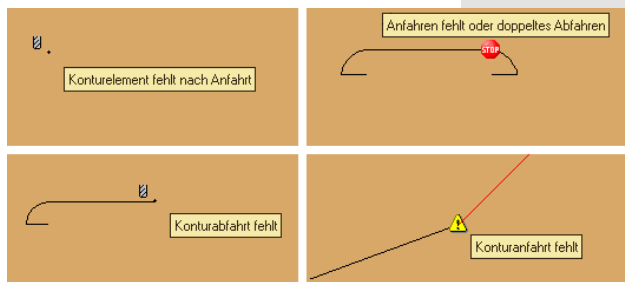
Every parameter of a dialogue comes with its own help bitmap



Pict.: COBUS NCAD surface

General Symbols

The macro „NCADIcon“ helps you to show a symbol at any spot of the construction. Additionally, you can put in several lines of text, which will be displayed as a tooltip. Thus, you will get aware immediately of important details or errors.



Testing the Tool Radius

When creating milling programmes the radius of interior curves will be controlled, if the tool path correction is switched on. If the curve radius is too small compared to the tool radius, a symbol is shown as a warning.

Automatic Error Prompt

If an error is reported using COBUS NCAD, this will automatically be forwarded to COBUS NCAD Support. The

system packs the files concerned automatically and sends them via email. Errors can thus be swiftly identified and corrected.

Autosave Backup Copies

The function „Autosave“ allows you to make backup copies within a definable time schedule (e. g. every 10 minutes) to ensure as little loss of data as possible in case of a system error or crash.

Parallel Display of Two Graphic Views

How can you be sure that all programming requirements have been met and that the construction is correct? The extended window administration provides visual support: Displaying two graphic views at the same time you can look at your workpiece – from above, from the front, sideways – and you can immediately verify that the CNC programme is correct.

high saving potencial

user friendly

CAD/CAM

WOP

batch lot 1

CNC programming

machine neutral

cost reduction

Linearisation Postprocessor

Much time and money can be saved with automated processings for repetitive tasks and identical production. But if you want to run a special production and make an individual alteration, you have to break up the normal system of rules. For this task you need the linearisation postprocessor. It solves complex and/or variable loop constructions. The individual processings or the processing of the sequence can then be changed. This grants great flexibility for your work, without having to adjust the configuration files for each and every special part.

Rectangular and Circular Pocket

In COBUS NCAD there are various standard input options for rectangular and circular pockets. Thus the user may chose, whether the pocket is to be cleared or if only the rim is to be routed. Running direction (parallel feed/counter rotation), clearing from „outside to inside“ or from „inside to

outside“, flying plunge as well as a smoothing measure can be defined. Circular pockets will be cleared spirally. The graphic displays immediately, whether the pocket is routed completely.

Extended Boring Optimisation

These functions make boring optimisation and use of boring bars really powerful:

- Optimal boring algorithm
- Even bore holes from subsurface can be optimised
- Efficient functionality of boring cyclii
- Rotatable boring bars are supported
- Identical boring postions of holes are processed with optimisation



Conversion of CAD to CAM

(circle/borehole)

CAD circles can be converted into boreholes. To achieve that you mark circles in an area, which will then be converted to boreholes. The allocation of the depth of the borehole has to be done manually.

Modern CAM software adds a great deal of value to investments already made in machines, but it only represents a mere fraction of the total costs.

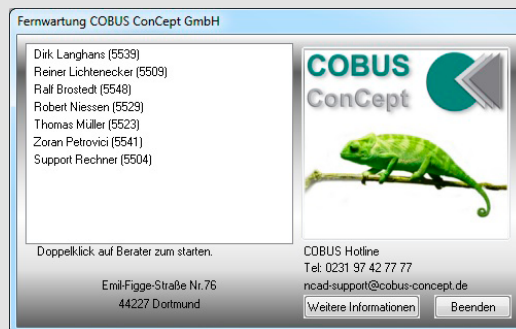


This is COBUS ConCept:

A German IT company of system engineers who have been reliable partner to wood-working manufacturers for more than 20 years. They offer professional systems and solutions, design and optimize databased business processes and integrate bespoke software solutions for CAD/CAM automation techniques.

Remote Maintenance

Remote maintenance can be called up directly via the internet: Without installation of an extra tool, and without problems with firewalls. The customer defines when a connection is to be initiated. Unintentional access is therefore not possible.



**Your Success.
Our Motivation.**



Central Offices
COBUS ConCept
Nickelstraße 21
33378 Rheda-Wiedenbrück
Germany
Phone: +49 5242 4054-0
Fax: +49 5242 4054-199
E-Mail: info@cobus-concept.de
Web: <http://www.cobus-concept.de>

Further offices in
COBUS ConCept
Haus Uhlenkotten 26
48159 Münster
Germany
Phone: +49 5242 4054-16600
Fax: +49 5242 4054-16699
E-Mail: info@cobus-systems.de

COBUS ConCept
Alter Hellweg 50
44379 Dortmund
Germany
Phone: +49 231 997792-0
Fax: +49 231 997792-92
E-Mail: dortmund@cobus-concept.de