

DIEFFENBACHER Short Cycle Lamination Lines

For the economical production of
Furniture panels, Laminate flooring, Wall and ceiling panels



For over 40 years, we have been designing and manufacturing high-quality plant technology for laminating MDF, HDF, particle boards and OSB boards at our site in Germany. Our purchase parts are always high-quality components, sourced from internationally recognised manufacturers.

Whether it's high gloss surfaces or registered embossing – with our plant you can achieve high-grade, robust surfaces with high product quality, both for industrial applications and use in private living areas.

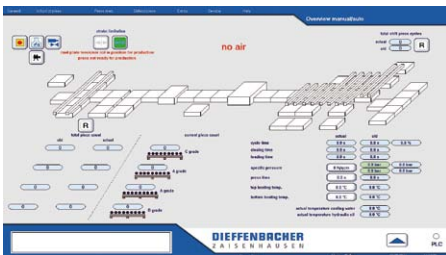


You Can Count on our Quality Promise

- High plant availability
- International service
- Needs based planning together with our customers

With numerous tests and new developments, we always retain our focus on the markets' requirements and developments so that our customers can react flexibly to the products and trends of tomorrow.

Our control technology has a decentralised structure and is recognised as being user friendly. All processes can be compiled through an easy-to-understand, on-screen display. Our system's text modules are displayed in the desired national language.



Our Technology Package:

- Up to 250 cycles per hour with up to 6.5 N/mm² press power
- Up to 4 boards per press
- Custom plant planning – the most simple basic plant can be augmented on a step-by-step basis to a fully automatic production system with an annual output of up to 22 million m²

