

**D Dietrich's**



## Why choose Dietrich's?

Dietrich's gives every builder, designer and architect total process control capabilities from the initial design to the finished product. Every project can be completed with confidence using one software package, all supported by the leader in 3D CAD/CAM software for wood building, by utilizing these essential functions:

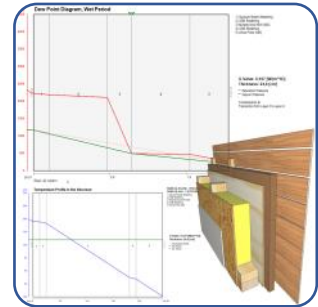
- Energy Efficiency Software Intelligence
- Powerful User Friendly Automated CAD Tools
- Total Material Management Capabilities
- Factory Automation CAM Tools
- Comprehensive After Sales Support
- Project Specific Consulting Services

**3D-CAD/CAM**

for Wood Building

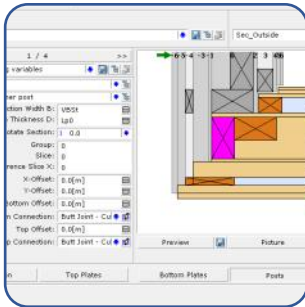
### Energy Efficiency Software Intelligence

- allows the builder to produce high quality building envelopes right from the initial design. Wall, ceiling and roof build-ups incorporating exact material properties can be easily created while calculations are done to show the exact U values and performance characteristics of each build-up. This technology allows the builder to build it right the first time with all of the performance data automatically stored for build-up performance verification and traceability.



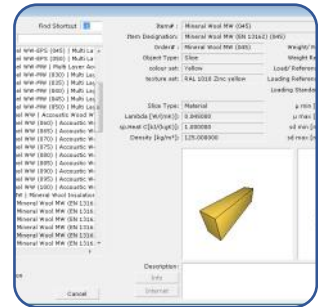
### Powerful User Friendly Automated CAD Tools

- greatly decrease the amount of time spent during the initial design or in making changes to an existing design all equating a reduction in time to market for each project while simultaneously increasing overall design outputs. These tools can be used to completely automate the creation of walls, ceilings and roofs incorporating all of the correct materials and dimensions from pre-populated build-up recipes.



### Total Material Management Capabilities

- are used to effectively manage all aspects of raw materials used in a building project evaluating everything from overall material usage to creating material lists automatically for project management and purchasing groups. This information can be exported in either a Microsoft Word or Microsoft Excel format.



### Factory Automation CAM Tools

- can assist in taking manual or semi-automated production of wooden components or structures and transform these processes into a fully automated process to maximize any CNC production machine being used and increase consistency from one component to the next for process capability control while minimizing tolerance stacking.



### Comprehensive After Sales Support

- is a high priority for the Dietrich's team. Whether it is software implementation or project specific, Dietrich's guarantees that our customers will be peak performers in their areas of expertise and market segment.

### Project Specific Consulting Services

- allows for in depth reviews of designs, materials or process implementation. Whether it is using traditional building techniques or leading green building trends, the Dietrich's team has the knowledge and experience to handle the toughest projects, while working side by side with your team as your true technology partner.

