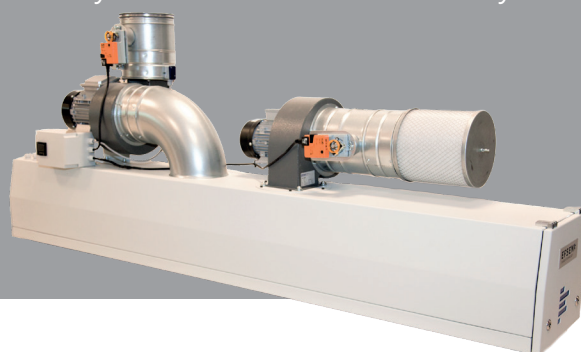


WoodCure

The UV lamp for the wood industry with Optimum Curing Performance

EFSEN UV & EB TECHNOLOGY has developed the optimal UV system for the wood industry. With the performance and user in focus, WoodCure offers highest intensity, best uniformity, longest lifetime of bulb and reflector and fast and easy maintenance. Furthermore, it is easy to retrofit and often enables customers to use less UV system than they currently do.

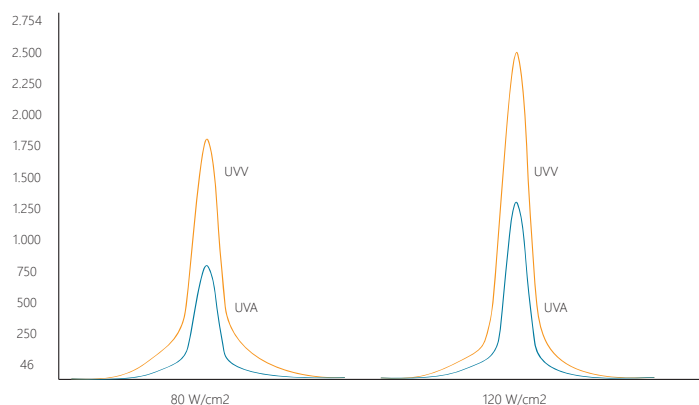


High intensity – the key to good curing

Our WoodCure enables UV at a higher irradiance/peak than other systems. This enables longer lifetime of bulbs as well as better curing on the edges. On the left chart you see the values at conventional 80W/cm & 120W/cm systems with Hg and Ga lamps.

Irradiance output elliptical reflector:	Peak intensity (mW/cm ²)	Energy @5m/min (mJ/cm ²)
80W/cm (Hg) UV-A	1475	760
80W/cm (Ga) UV-V	1730	1190
120W/cm (Hg) UV-A	2240	1200
120W/cm (Ga) UV-V	2475	1680

Measured with EIT-PowerMap



Advantages of EFSEN WoodCure

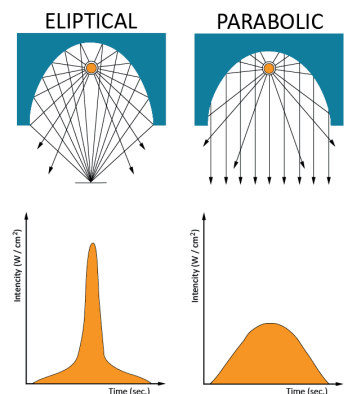
- ✓ Robust design, with air-handling made for dirty and dusty environments.
- ✓ Fast and easy maintenance, for more production efficiency.
- ✓ Low standby power to save energy.
- ✓ Unique cooling system offers improved curing on edges, for better quality and less wasted production.
- ✓ Can work with existing power supply and cable for a cheap and simple UV upgrade.



WoodCure installation with four lamps.

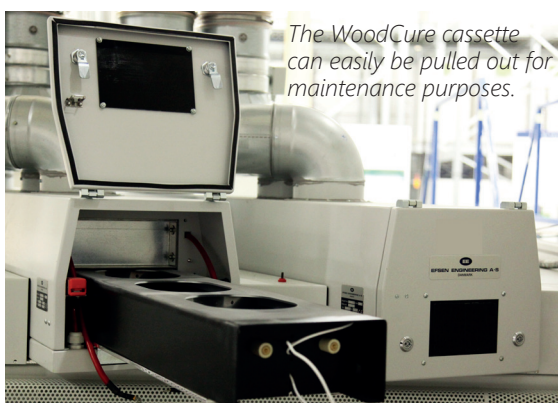
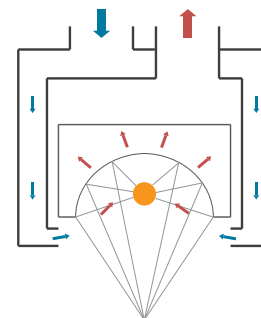
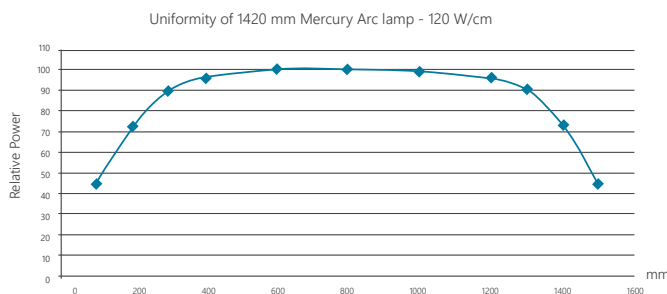
Qualified results with a correct optical design

Choose the optical design to match to your application. Select the elliptical reflector and you have the highest intensity (mW/cm) and Energy (mJ/cm) and chose the parabolic reflector you have high energy delivered at variable distance.



Unique cooling system

The cooling system is unique and secures even and clean-air cooling along the bulb, this prolongs the lifetime of the bulb. Clean air is pushed into the double wall of the lamp house and through an exhaust blower the air is pulled through the lamp/reflector zone and ventilated to the outside. This means that only clean air is passing the lamp and the reflector, and the lamp is being evenly cooled along its length. All in all, factors that improve your process, uniformity, lifetime of bulb and quality of end product.



The WoodCure cassette can easily be pulled out for maintenance purposes.

Easy to maintain & long steady operation

With a robust design the WoodCure is developed with priority on a long steady operation in a non-clean environment. The unique cooling system secures uniform and clean-air cooling along the bulb.

Maintenance is made very easy, you simply pull out the reflector-lamp assembly, and you do not have to stand on top of the line. This can be done during production. You can even have an extra cassette for operation during cleaning and bulb change. This minimizes downtime for maintenance.

Specifications

Curing width: 200-1600mm

Power: 50-120W/cm

Power adjustment: Stepwise or continuous regulation

Get in touch

Skovlytoften 33 | DK-2840 Holte

efsen@efsen.dk | phone: +45 45650260