

Fagus-GreCon
Greten GmbH & Co. KG

P.O. Box 1243
D-31042 Alfeld-Hanover

Phone +49(0)5181-79-0
Fax +49(0)5181-79-229
E-Mail sales@grecon.com

www.grecon.com

GreCon

**FIBERVIEW - The
System for Inline Fibre
Quality Control and
Refiner Optimisation**

GreCon

Fire
Protection

GreCon

Measuring
Technology

GreCon

Service



EN | R.05 | 2015.04
Subject to technical and country-specific modifications.
© Fagus-GreCon Greten GmbH & Co. KG

FIBERVIEW



Your Benefit



- Reliable, objective and representative evaluation of fibre quality
- Control and optimisation of the refining process
- Quality assurance and reduced customer complaints
- Reduced energy consumption by the refiner

Automatic and Reliable Monitoring of the Fibre Quality

The Surface Inspection System FIBERVIEW inspects the fibre quality inline on the basis of the number and size of shives, thus ensuring a continuous, consistent monitoring of spread fibres in the MDF panel production. Monitoring of tolerance limits, reports and statistics allow detailed conclusions of the upstream production process.

The fibre mat is inspected by a camera system after the pre-press across a width of about 400 mm. Constant measuring conditions are created by automatic height adjustment of the camera and illumination unit including light regulation, independent of panel type and ambient conditions. The shives are automatically detected and classified by three image processing steps. This process is accomplished continuously - usually every 3 s - during the production so that representative information on the fibre quality is available in real time. With this technology, it is possible for the first time to evaluate the refining process objectively. The energy consumption of the refiner can be optimised depending on the required fibre quality. For example, the process can be directly influenced by changing the distance of the refiner discs, thus reducing energy needed to produce optimal sized shives.

Why GreCon



- Customer-specific system design
- High innovative capacity: more than 10 % of the employees work in the R & D division
- Worldwide customer service network: more than 80 service technicians on duty worldwide
- Efficient sales network: represented in more than 35 countries
- High expertise: more than 40 years of experience in the measuring technology sector



Design and Construction of the System

The measuring system is a solid, closed frame construction.

The visual field of the camera is protected from dirt and dust by a tube.

The entire camera and illumination unit automatically adjusts to changing working levels depending on the mat height.

Changes in light intensity of the fibre mat due to different wood types, mixtures, changes in moisture or cooking conditions are automatically compensated.

Software Functions

■ Software

The visualisation software of all GreCon measuring systems is based on Windows.

■ Visualisation

The core of the software package is the visualisation software. It records, stores and graphically represents all measured data. The simple menu structure, which is identical for all GreCon measuring systems, provides intuitive and user-friendly operation.

■ Database

The database stores the measured values, thus allowing the operator to call up all events from history for analysis at any time.

■ Reporting

Using special software, individual reports can be generated from the database. Available reporting types are time-related reports, such as shift or monthly reports, and order-related reports that can be selected according to requirements.

■ Network Connection

For the data transmission to higher-ranking process control systems, different network connections, such as OPC, are available.



Service

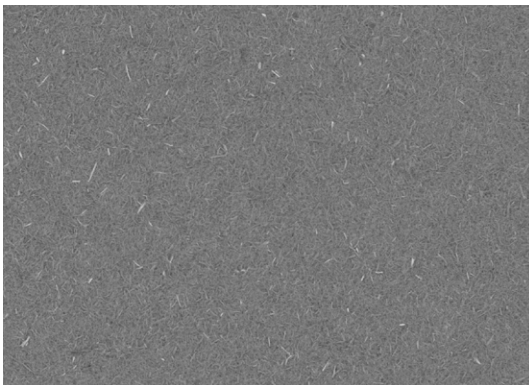
GreCon measuring systems are equipped with GreCon online support SATELLITE.

This provides safe, simple and fast remote support when there is trouble or to check the system. Each online support is logged and stored in the system's history.

Technical Specifications

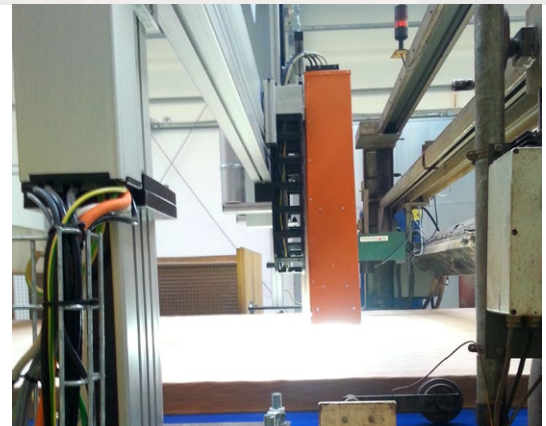
- Inspection width 400 mm (16 inch) with one line-scan camera
- Scanning directly after the pre-press
- Resolution 100 µm up to a speed of 84 m/min
- Automatic height tracking
- Automatic regulation of light intensity
- Scaling of the number of shives per size class on a reference surface of 1 m², for example

Fibre mat



Applications

In the wood based panel industry, the FIBERVIEW is used for the production of fibreboards and installed directly after the pre-press.



Fibre mat with identified shives

