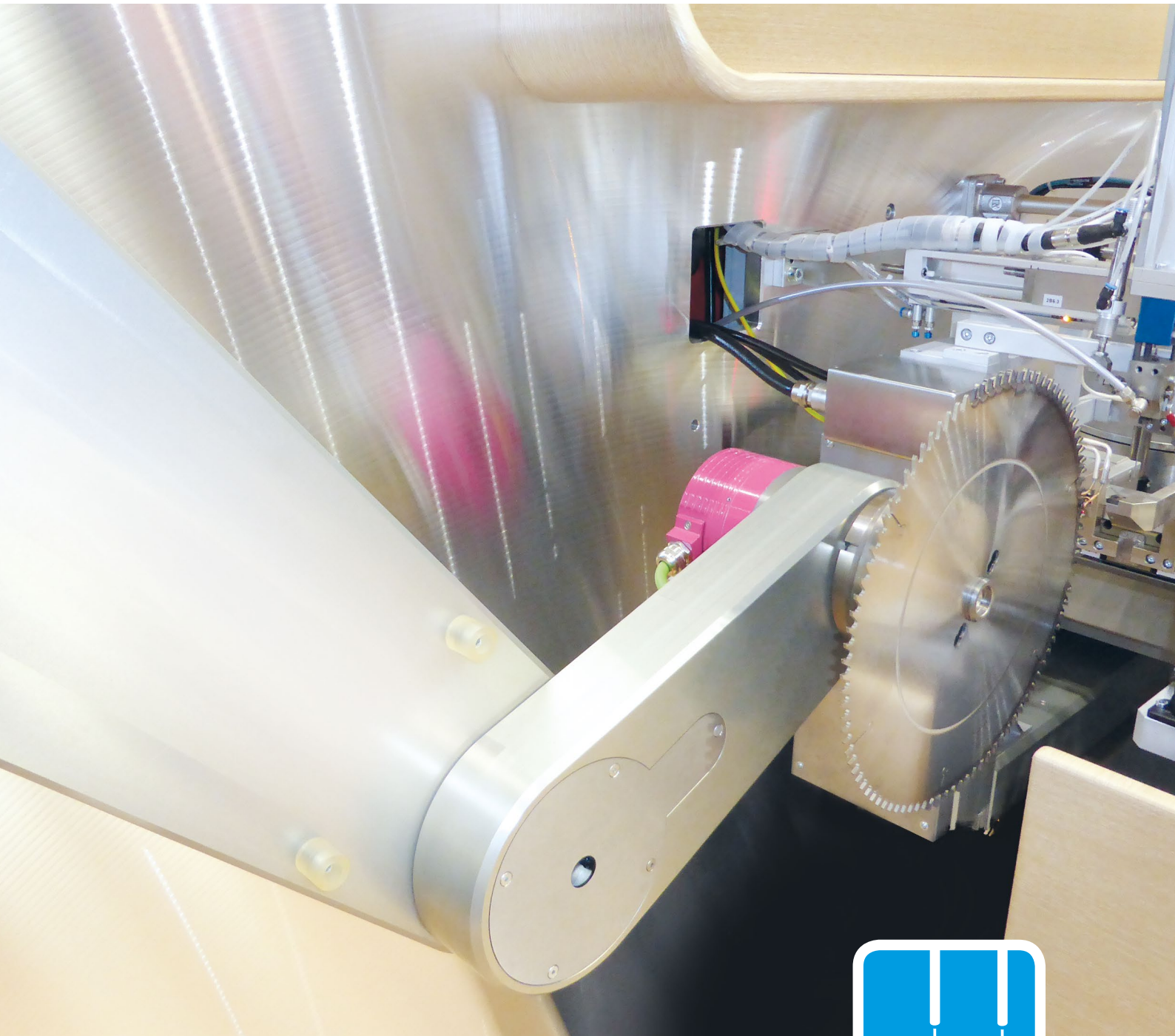


# KÄHNY

SONDERMASCHINEN



**THAT'S HOW BRAZING WORKS TODAY:  
KÄHNY SLM-K07**

## TECHNICAL DATA

### Sawblade diameter

80 - 850 mm  
70 - 1200 mm (optional)

### Tip dimensions

Length: 3.7 - 20 mm  
Width: 2 - 8 mm  
Height: 1.5 - 6 mm

Optional  
Minimum tip width  
of 1.5 mm with  
change parts

### Rake angle

-10° up to +30°

### Output of the machine

Up to 8 tips / minute  
dependant on thickness of  
sawbody and size of tip

### Performance of HF-generator

5 kW (Himmel)

### Integrated water cooling system



## SLM-K07 HIGHLIGHTS

**Solitary gripper system** for secure transport of even smallest tips from picking-up to brazing position

**Ultra-precise motion of gripper by 3 KÄHNY servo linear positioning axis** this opens-up new possibilities for tip configuration and options for brazing accuracy

**Integrated measuring system** enables precise lateral positioning of the tip

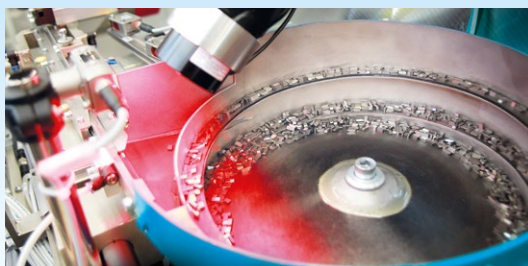
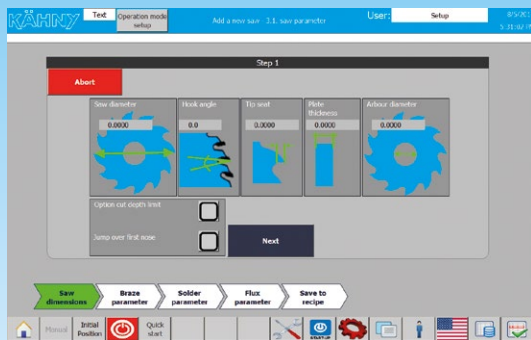
**Scara handling arm with 3 servo gearbox motors** allows the handling of a wide range of sawblade diameters and geometry

**Hundred fold tried-and-tested sorting and feeding technology made by KÄHNY** with optical tip detection

**The well-established KÄHNY flux dosing system** now upgraded with a servo drive for ultimate possibilities

**Easy-to-operate touchscreen panel** fool-proof

**Recording of production data** for quality check and maintenance Service



# NEW SOLUTIONS for new requirements

On designing the new brazing machine SLM-K07  
the center of attention was one thing: YOU

**YOU** made us design a machine that meets your requirements: **Flexibility as a priority!** On one hand a constant growing variety of saw and tip specifications on the other hand a downsizing batch size.

Our solution for you is a machine reliable and durable as KÄHNY machines are known for more than 30 years, but now with a flexibility that is outstanding. The SLM-K07 offers a change-over to other saw and tip dimensions almost fully automatically.

The SLM-K07 also works with an integrated measuring system, which together with a new 3-axis-motion gripper system allows a highly accurate positioning of the tip on the saw blank. With the SLM-K07 tipper you are set to braze your quality wood and / or metal saws with carbide, cermet or PCB tips at highest quality demands.



## NEW! SMARTLOAD B-07

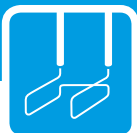
Fully automatic loading  
of circular saws (diameter  
80 - 850 mm)

# KÄHNY

SONDERMASCHINEN



feeding.



brazing.



assembly.

Kähny Maschinenbau GmbH  
Oberbrüdener Str. 60  
D-71522 Backnang-Steinbach  
Germany

Phone  
+49 (0) 7191 / 9238-0

Fax  
+49 (0) 7191 / 9238 40

[info@kaehny-gmbh.de](mailto:info@kaehny-gmbh.de)  
[www.kaehny-gmbh.de](http://www.kaehny-gmbh.de)