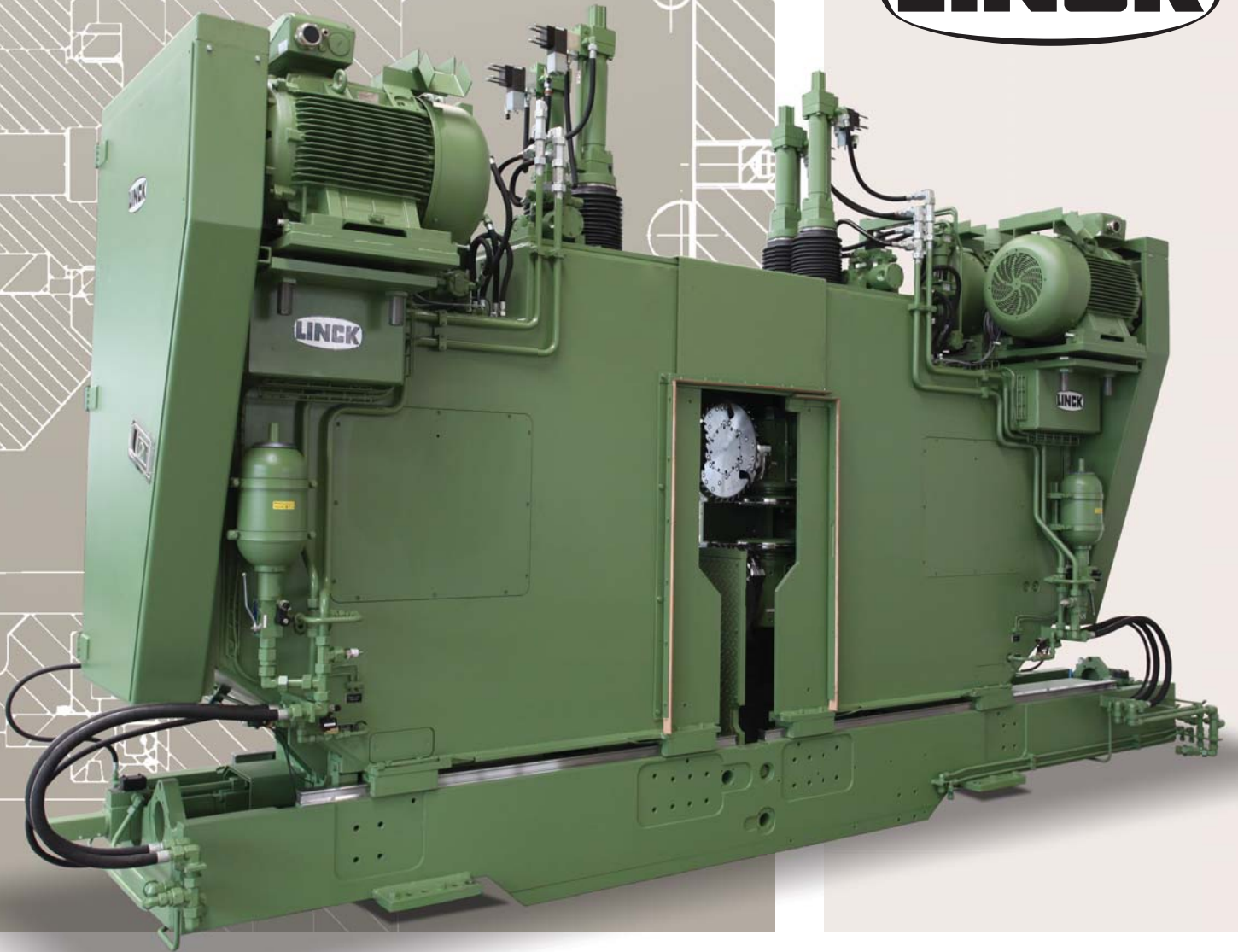


LINCK



**PROFILER UNIT
VPM 450**

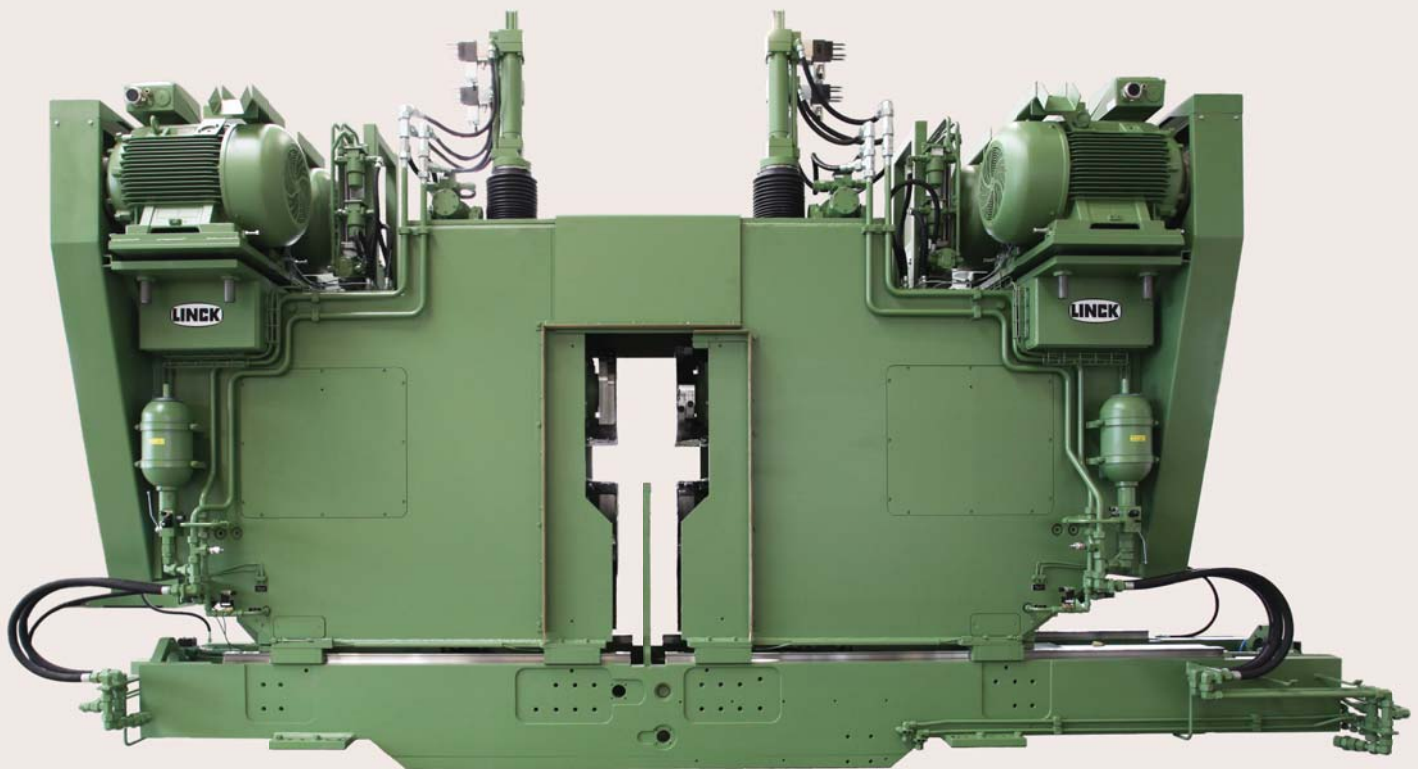
PROFILER UNIT VPM 450

The profiler unit VPM 450 profiles one sideboard on each of the two lateral sides of a two- or four-sided cant.

Two tool units per side produce the board at the two- or four-sided cant by removing the wane. Each of the four tool units is driven by a

three-phase motor and can either be pivoted or tilted path-controlled for maximum recovery. This allows curve sawing or diagonal profiling of sideboards.

The tool unit with two saw blades mounted at right angles produces high quality lumber surfaces without tear-outs.



The two VPM machine halves are supported on linear guides. The generous length of the linear guides offers comfortable space for changing tools when the machine is in tool changing position.

The machine width adjustment can either be servo-hydraulic or with electrically driven ball-screw spindle.

The machine mass to be moved was kept low to achieve short tool adjusting times. For tilting or pivoting, only the tool units are moved and not the complete machine.

The short adjusting time and the extremely compact tool unit guarantee minimum gaps inbetween the cants even when processing unsorted logs and operating with sideboard optimization.

The maximum 4 x 132 kW motors also allow large chip removal areas at high feed speed.

Tool unit

A patented tool unit per corner consisting of a profiler head and a saw blade mounted at right angles produces high quality lumber surfaces without tear-outs.

The synchronous tool run is guaranteed by a specially developed high performance gear box which allows a meshing arrangement of the tools.



Profiler unit VPM / N 450 for path-controlled diagonal profiling

The tool units of each machine side can be tilted via a common axis in or against feed direction and simultaneously adjusted in height in the machine housing.

The vertical adjustment is done by a continuous path control and hydraulic servo cylinders.

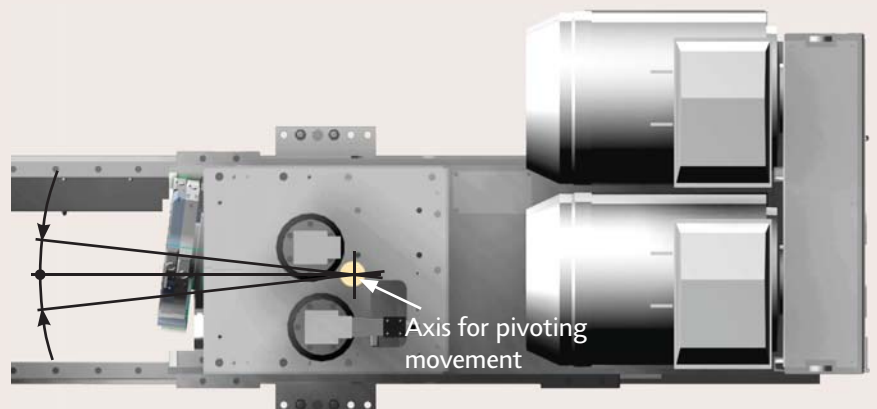
This function allows the diagonal profiling of a sideboard considering the log/cant shape.

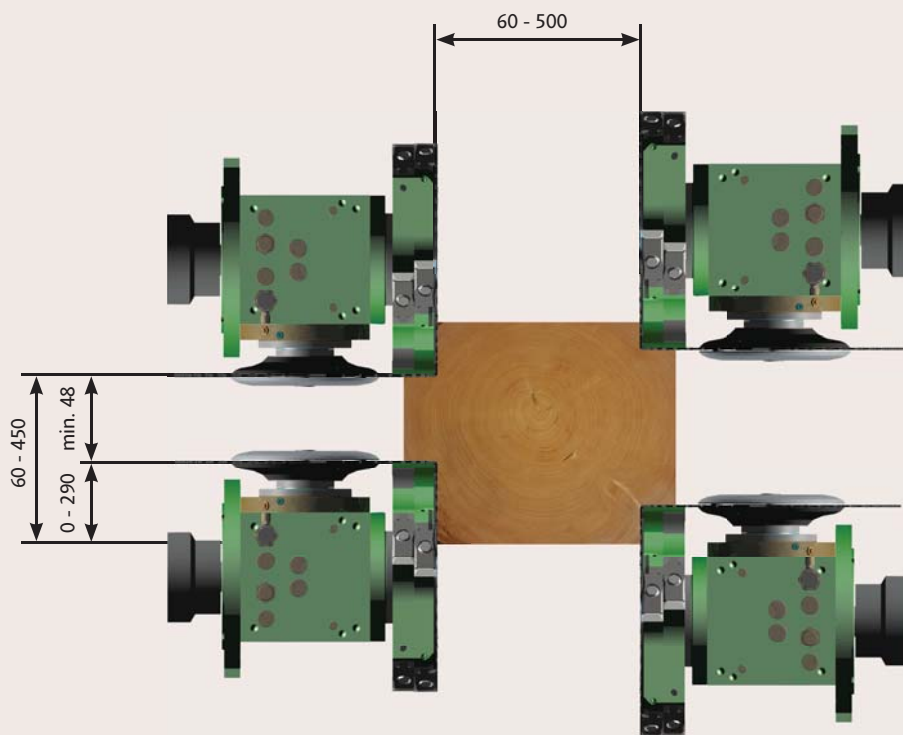
The lumber recovery achieved this way corresponds with the one of a board edger plant.

Profiler unit VPM / S 450 for active curve profiling

The VPM / S is equipped with vertical pivoting axes within the machine which allow the independent pivoting of the profilers on both sides.

This machine design is suitable for active curve profiling in the secondary processing step.





Technical Data		VPM 450	VPM /N 450	VPM /S 450
Passage height max.	mm		600	
Horizontal profiling size max.	mm		90	
Vertical profiling size max.	mm		160	
Tilting angle	°	-	± 1,5	-
Pivoting angle	°	-	-	± 0,75
Board width min.	mm		48	
Cant length min.	m		2,00	
Drive power max.	kW		4 x 132	
Feed speed up to max.	m/min		200	
Weight	t		21,0	



LINCK
 Holzverarbeitungstechnik GmbH
 Appenweierer Straße 46
 DE - 77704 Oberkirch

Tel: +49 7802 933 0
 Fax: +49 7802 933 100

info@linck.com
 www.linck.com



While this machine catalogue shows authentic photographs of the equipment, it cannot be assumed that similar equipment ordered will have incorporated in it all the identical features pictured. The right to change designs and technical data is reserved by the manufacturer.