

Winlog

Optimized log sorting and control of the log and merchandizing yard

Interopt

Bucking optimization for logs by dimension, quality or highest value cutting pattern



Winlog Sorting

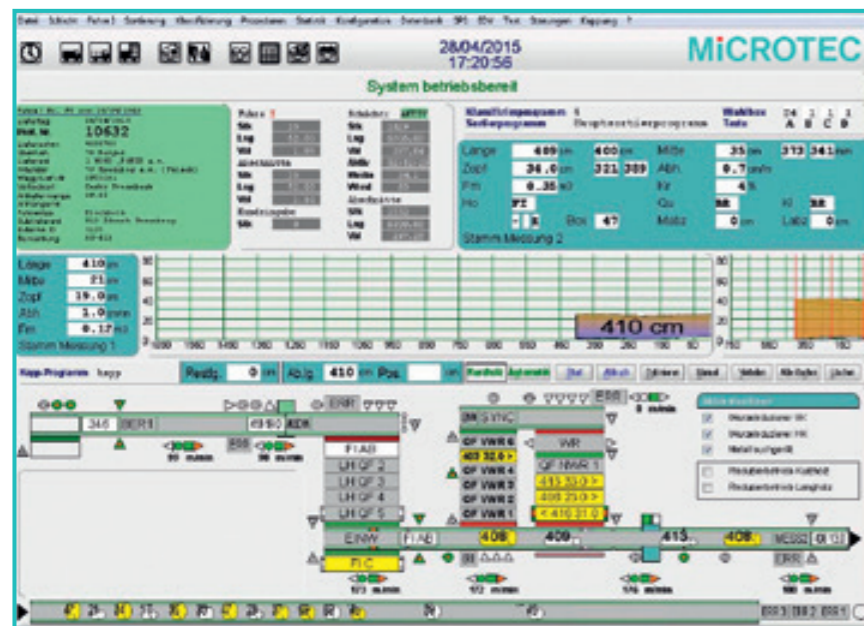
Winlog Sorting Optimization offers an all-encompassing control suite for your log sorting that guarantees an optimal use of your log and merchandizing yard. Winlog Sorting Optimization gathers measuring data over the entire production cycle and analyzes its efficiency, productivity and recovery based on real time production data.

Winlog Sorting Optimization automatically sorts logs according to its geometry, quality, species or other customer specific criteria. All measurement are stored in a sort sequence. Winlog Sorting Optimization designates a free box in the log and merchandizing yard and fills it until it is ready for processing. Selection criteria are stored and can be recalled at any time. This software relies on measurement data from Logeye 300, iRed, iRas or CT Log 360° X-ray CT-Sawing Optimization and integrates seamlessly with existing software. Margins for improving recovery are clearly identified by Winlog Sorting Optimization ensuring a transparent and information-based decision-making.

«Information is extremely valuable to companies and that is what Winlog excels at. Winlog Sorting Optimization records all log input information and processes the measuring data in real time into valuable information for optimized sorting, data handling and storage to increase efficiency in your sorting line.»

Dott. Ing. Federico Giudiceandrea
Microtec CEO

- Winlog Sorting features
- × Provides all necessary information for the log sorting line
 - × Automatically assigns a free box
 - × Gathers all log information and creates reports by date, supplier, log qualities, etc.
 - × Automates and streamlines production processes and log procurement
 - × Creates database of log information
 - × Exchanges information through open protocols and interfaces



Interopt Bucking

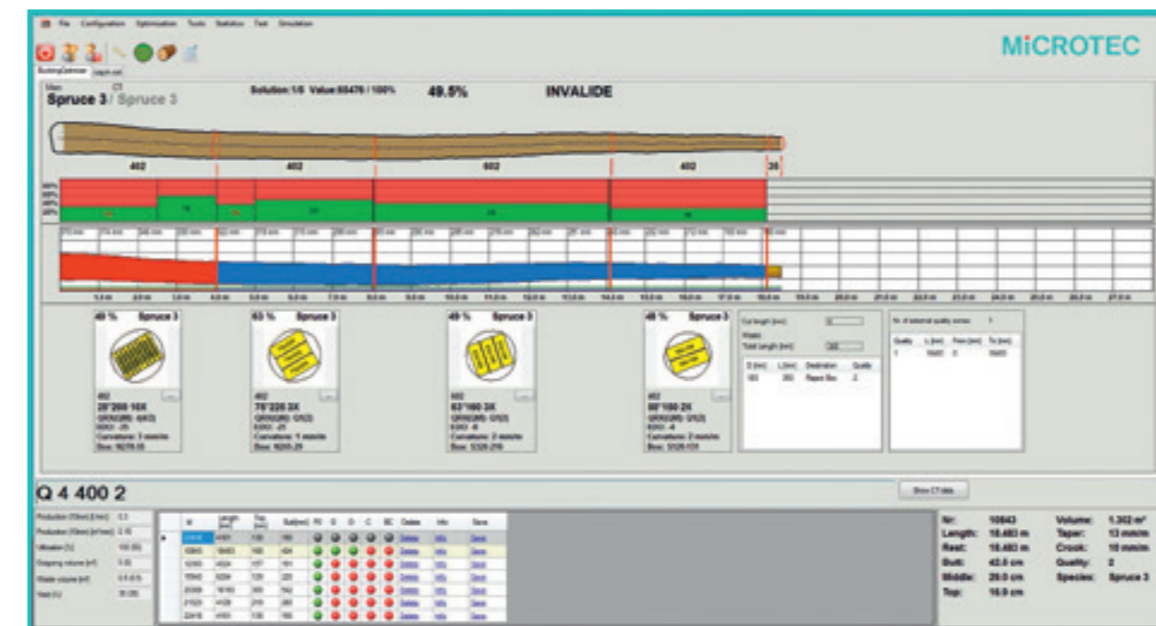
Interopt Bucking Optimization calculates the optimum merchandizing solution according to dimension, curvature, taper and quality information and optimizes bucking according to real time priorities. Cut view solutions are optimized in various areas within a log to optimize bucking according to the overall resale value of the recovered lumber. Interopt Bucking Optimization directs the bucking saw and the sorting line.

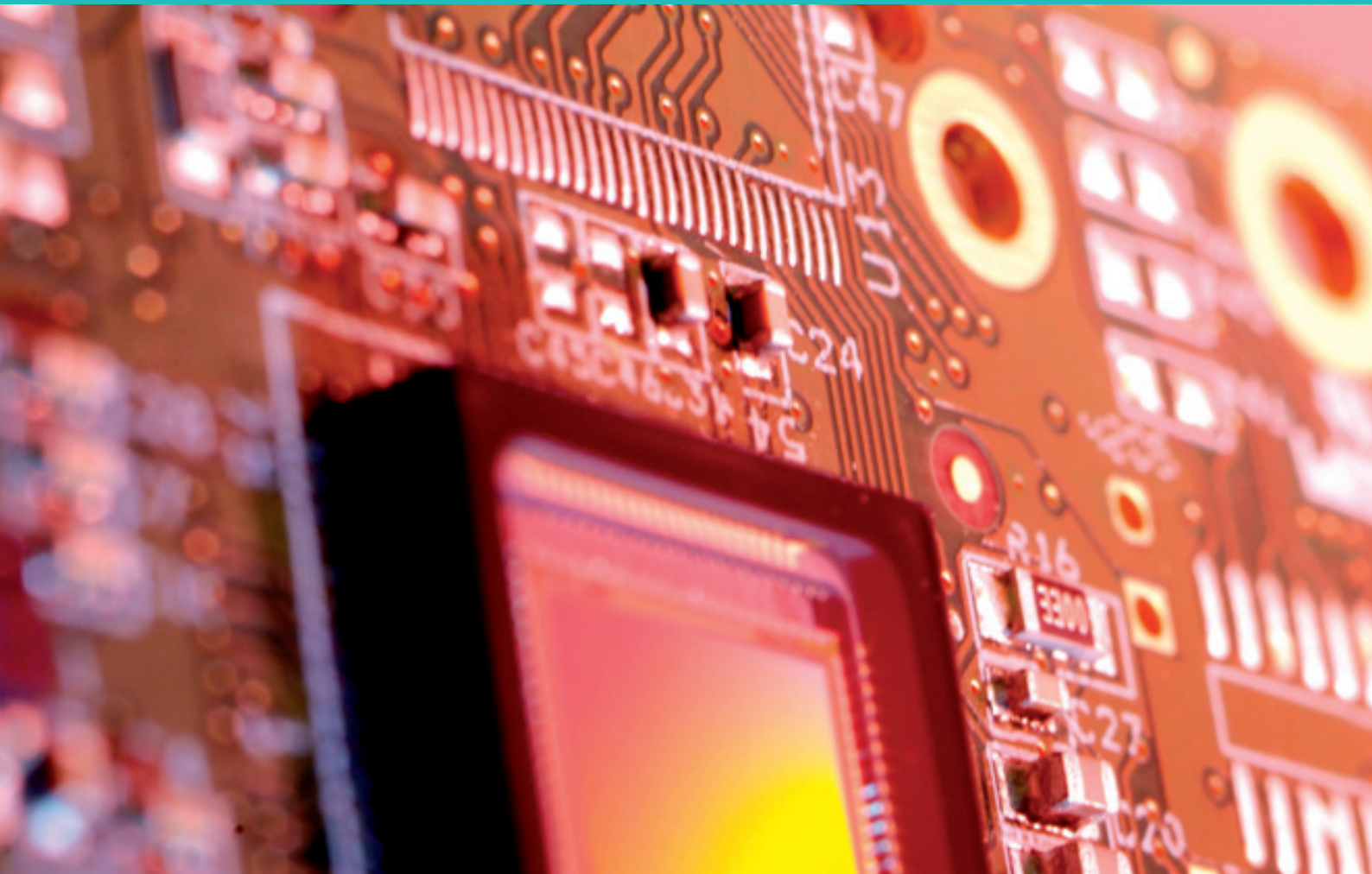
«Interopt is the best solution for log bucking optimization. Bucking is optimized based on the highest value cut view solutions in various areas within the log to boost overall lumber recovery and resale value.»

Dott. Ing. Federico Giudiceandrea
Microtec CEO

Interopt Bucking Optimization relies on measuring data delivered by Logeye 300 Multi-Sensor Quality Scanner or CT Log 360° X-ray CT-Sawing Optimization.

- Interopt Bucking features
- × Optimizes bucking based on the highest value cutting pattern solutions in various areas within the log
 - × Real time data processing and bucking optimization
 - × Enables individual customer quality requirements for log bucking
 - × Is fine-tuned to your plant-specific configuration





World leading wood scanning solutions

Microtec GmbH Srl
Via Julius-Durst Straße 98
39042 Bressanone/Brixen, Italy
T + 39 0472 273 611
info@microtec.eu
microtec.eu

Design: studiomut.com

